

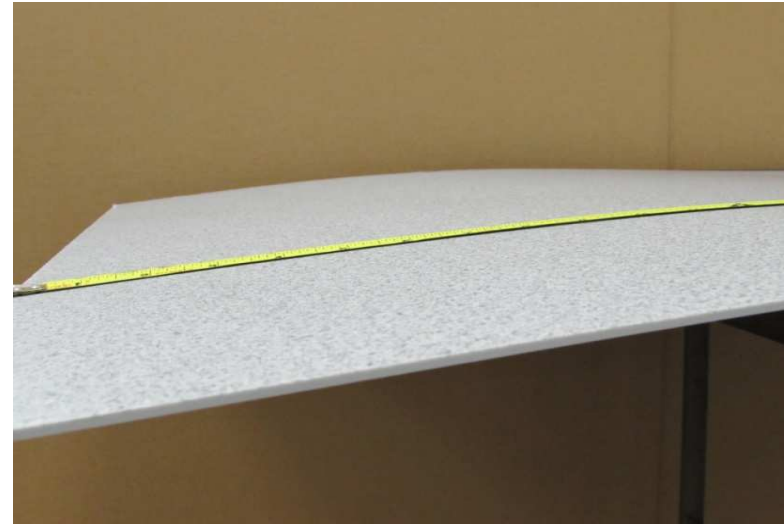
Measuring Replacement Inlays

Common Mistakes to Avoid:

Keep the tape straight along the inlay, an angle will increase the reading.



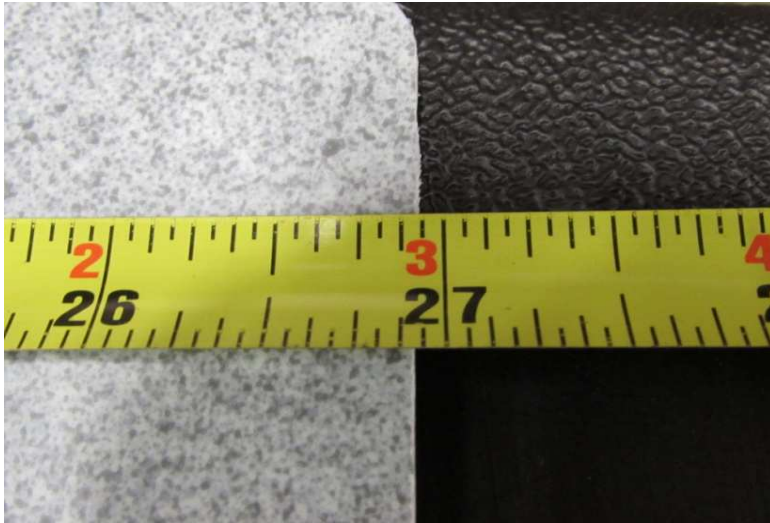
Make sure the inlay is on a flat surface, a bow will also increase the measurement.



To measure your inlays, start with the tape on one edge, near the corner. Make sure the end of the tape is flat against the inlay:

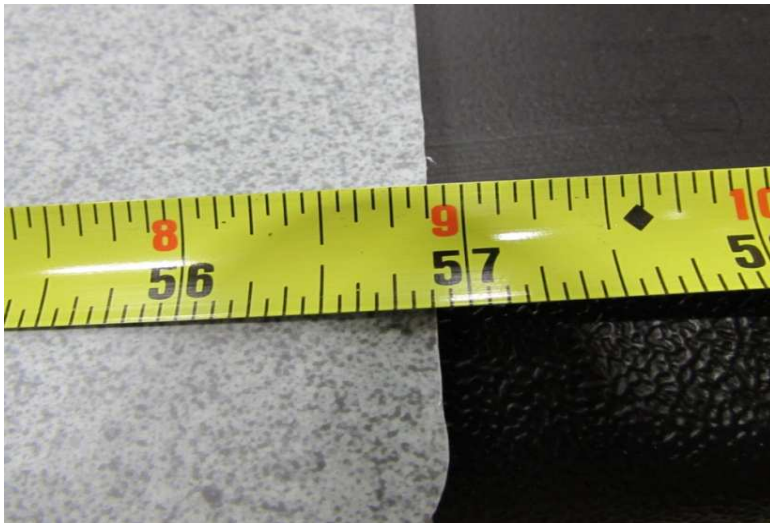


Measure to the opposite side. In the illustration below, this insert would have a width of $26 \frac{15}{16}$ inches. It is important to measure to the smallest resolution of your tape to get the best fit for your replacements.



Repeat the measurement between the same edges by moving the tape towards the other corner. Both measurements should be the same.

To measure the next length, repeat the same steps. In this illustration, the length of this inlay would be $56 \frac{7}{8}$ inches



Iceberg Enterprises
www.icebergenterprises.com
(847) 685-9500