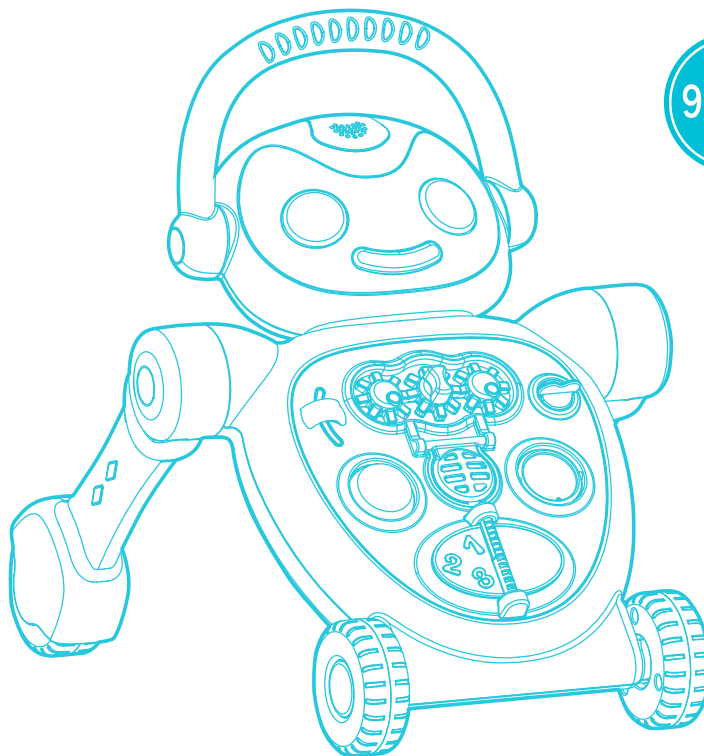




buddyBOT™

2-in-1 Push Walker

9-36m



⚠️ WARNING

This package contains small parts which are for adult assembly only. Care should be taken when unpacking and assembling of this toy. This product is designed for children from 9 to 36 months of age. User's weight must not exceed 22.7 kg (50 lbs) as there is insufficient strength to support overweight.

⚠️ WARNINGS

Read all instructions before assembly and use of the product, keep instructions for future use.

GENERAL SAFETY WARNINGS:

- Always keep packaging and parts away from and out of the reach of children to avoid choking hazards. • Adult assembly required.
- Adult supervision required. **NEVER** leave child unattended. • Inspect before each use and discontinue use if any parts are broken or missing to avoid injuries. • To avoid burns, keep the child away from hot liquids, ranges, radiators, space heaters, fireplaces, etc.
- Keep away from and prevent access to stairs, steps or uneven surfaces.
- **DO NOT** use the walker if it is damaged or broken. • Discontinue use when child can stand and walk by themselves.
- **DO NOT** use replacement parts other than those supplied by the manufacturer.

BATTERY WARNINGS:

- Requires two "AA"(LR6) alkaline batteries(not included) for toy operation.
- Non-rechargeable batteries are not to be recharged.
- Different types of batteries or new and used batteries are not to be mixed.
- Batteries are to be inserted with the correct polarity.
- Exhausted batteries are to be removed from the toy.
- The supply terminals are not to be short-circuited.
- Rechargeable batteries are to be removed from the toy before being charged.
- Rechargeable batteries are only to be charged under adult supervision.

FCC Statement (United States Only)

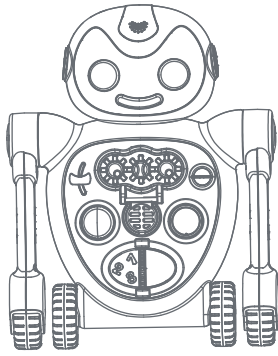
- **This device complies with Part 15 of the FCC Rules. Operation is subject to the following two conditions: (1) This device may not cause harmful interference, and (2) this device must accept any interference received, including interference that may cause undesired operation.**
- **NOTE:** This equipment has been tested and found to comply with the limits for a Class B digital device, pursuant to Part 15 of the FCC Rules. These limits are designed to provide reasonable protection against harmful interference in a residential installation. This equipment generates, uses and can radiate radio frequency energy and if not installed and used in accordance with the instructions, may cause harmful interference to radio communication. However, there is no guarantee that interference will not occur in a particular installation. If this equipment does cause harmful interference to radio or television reception, which can be determined by turning the equipment off and on, the user is encouraged to try to correct the interference by one or more of the following measures:
 - Reorient or relocate the receiving antenna.
 - Increase the separation between the equipment and receiver.
 - Connect the equipment into an outlet on a circuit different from that to which the receiver is connected.
 - Consult the dealer or experienced radio/TV technician for help.
- **NOTE:** Changes or modifications to this unit not expressly approved by the party responsible for compliance could void the user's authority to operate the equipment.

This Class B digital apparatus complies with Canadian ICES-003.

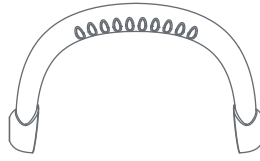
CARE AND CLEANING :

- Wipe clean with dry cloth on surface only. Do not submerge product under water.

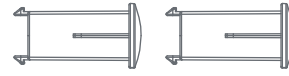
PARTS LIST



A. Body x1



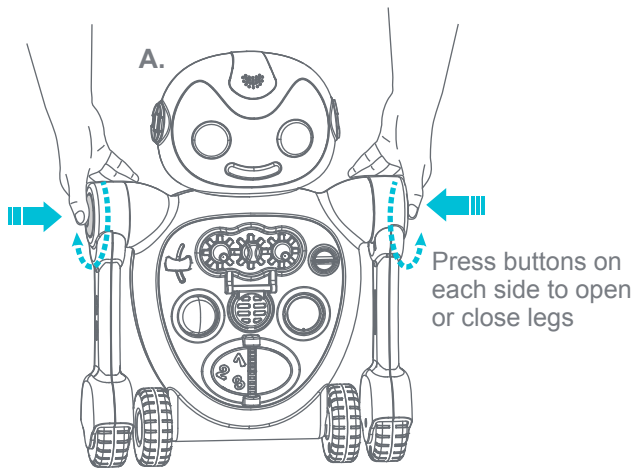
B. Handle x1



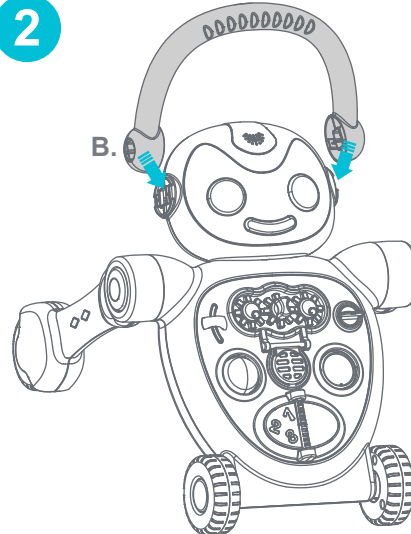
C. Handle locks x2

ADULT ASSEMBLY STEPS

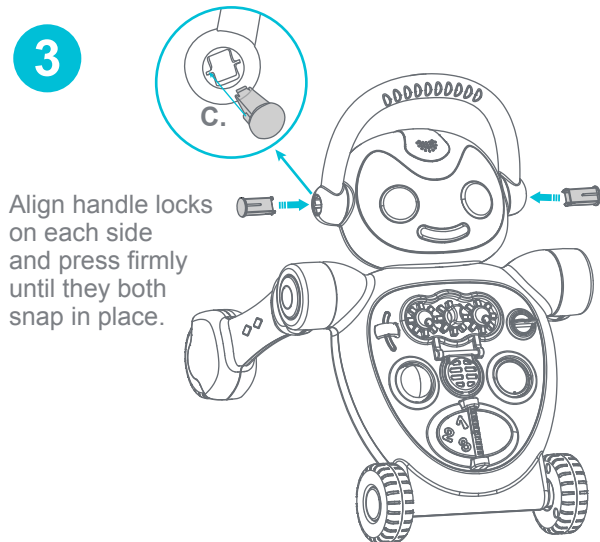
1



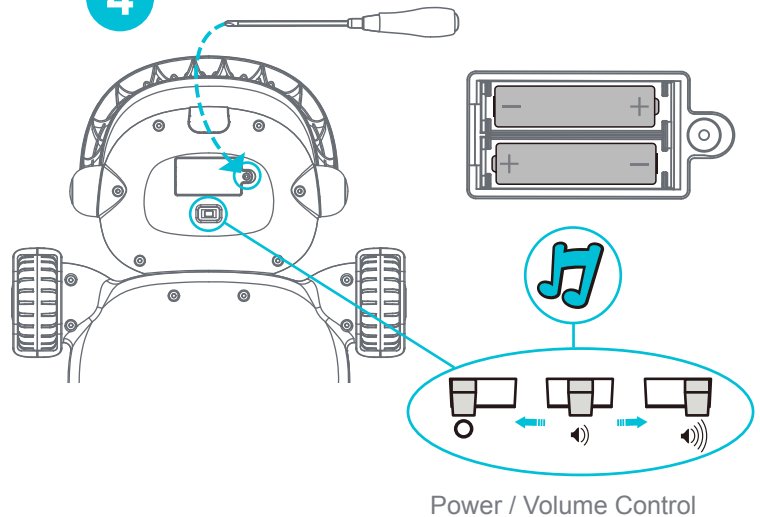
2



3



4



Baby Trend, Inc. 13048 Valley Blvd. Fontana CA 92335
1-800-328-7363 (8:00am ~ 4:30pm PST) www.babytrend.com

Para instrucciones en Español, conéctese a www.babytrend.com o llamar al: 1-800-328-7363.
Pour des instructions sur Français, connectez-vous à www.babytrend.com ou appelez : 1-800-328-7363.