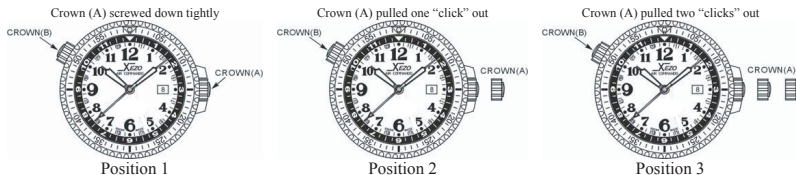


Operating manual for Air Commando automatic watch/ D45-BL, D45-G, D45-SS, D45-BM



Thank you for choosing a timepiece from our Xezo for unite4:good collection.
The Xezo Air Commando Limited Edition 500 sports 2 crowns.
Crown (A) at 3 o'clock is used to adjust local time and date.
Crown (B) at 10 o'clock operates the inner rotating bezel.
Crown (A) is screw-down locked crown.

Your watch is fitted with Citizen automatic movement.

The inner mechanism of the watch has a free swinging rotor that keeps the mainspring wound via the motion of your wrist. To achieve full power reserve of the automatic movement, please remember to wind the watch initially by rotating the winding crown 40 times. After wearing the watch for 36 hours, the movement will resume normal operation. A watch fitted with an automatic winding movement is rewound by the regular movements of your wrist.

Once fully wound, your watch will continue to keep time for approximately 42 hours after removing it from your wrist. Beyond this time, the watch will stop. You will then need to rewind it manually by unlocking the crown (A), and then turning the crown (A) clockwise (approximately 40 turns) to provide it with the necessary power reserve. After that, your daily activity should wind the watch sufficiently to keep it running at night when it is not being worn. You should wear your watch everyday to ensure optimal rewinding.

Important note: To unlock the screw-down crown (A) turn it 4-5 times counter-clockwise.

Note: As this is a mechanical watch, quartz watch accuracy cannot be expected.

We recommend self-adjustment exercise before setting the time and date.

Unlock the screw-down crown (A) by turning it 4-5 times counter-clockwise. Pull out the crown (A) to Position "3" (two "clicks" out). The seconds hand is stopped. Turn the crown clockwise and counter-clockwise, to let the hour hand and the minute hand do "exercise" or "self-adjustment". For example set hour and minute hands at 6:30PM and then 5:30PM. Then, set hour and minute hands at 6:00PM.

Once you have performed self-adjustment exercise, return the screw-down crown (A) to the locked position by pressing it against the case and turning it clockwise. Screw-down crown (A) now should be screwed down tightly to Position "1".

Setting the Time and Date

Important note: Do not change the date between 8 p.m. and 2 a.m. as the date may not change on the following day.

1.

Unlock the screw-down crown (A) by turning it 4-5 times counter-clockwise. Pull out the crown (A) to Position “2” (one “click” out). Rotate the crown (A) clockwise until the date shows one day earlier than the date you want to set. Pull out the crown (A) to Position “3” (two “clicks” out). The seconds hand is stopped. Set the local time by turning the crown (A) counter-clockwise to move the hour and minute hands forward. Turn the watch hands past 12 (at least once, or as many times as needed) to set the correct date.

2.

Once you have set the time or date, return the screw-down crown (A) to the locked position by pressing it against the case and turning it clockwise. Screw-down crown (A) now should be screwed down tightly to Position “1” to insure that your watch remains water resistant.

Remark:

You can synchronize the seconds hand with an official time signal (radio/ TV/Internet). When the crown (A) is pulled out in Position “3” (two “clicks” out), the seconds hand is stopped. As soon as the time setting has been synchronized, return the screw-down crown (A) to the locked position by pressing it against the case and turning it clockwise. Screw-down crown (A) now should be screwed down tightly to Position “1”.

Using dual-directional inner rotating bezel as additional time zone or to track elapsed time

This feature enables you to set the additional time zone or to track elapsed time. Hold the watch face-up with the numeral 6 pointing toward you.

Then rotate the watch 180 degrees counterclockwise. (Numeral 12 now points toward you.)

Hold the crown (B) with the thumb and index finger of your right hand.

To set the additional time zone turn the crown (B) clockwise or counterclockwise until the hour hand points to the desired marker on the hour scale of the inner rotating bezel.

To track elapsed time turn the inner bezel in either direction until the triangle on it points to the hour hand.

Using the rotating uni-directional bezel

This feature enables you to track elapsed time.

1.

Turn the bezel counter-clockwise until the zero mark is at the minute hand.

Important note: This model has unidirectional rotating bezel; the bezel only turns counter-clockwise to assure that if moved unintentionally, the time reading will err on the side of caution when measuring elapsed time.

2.

The position of the minute hand in relation to the zero mark on the bezel will indicate the total number of minutes elapsed.

Important Note:

In order to insure that your watch remains water-resistant, it is important that crown (A) is always returned to the locked position.

Specifications:

Case and Bracelet - 316L Stainless Steel (leather band is optional)

Glass - Swiss-made Flat Sapphire Crystal with anti-reflection

Movement - Automatic by Citizen with shock-absorber and hacking feature.

28,800 vibrations per hour

Case back - Mineral Crystal Glass

Water-Resistance - 200M/660FT - 300M/990FT

Power reserve: ~42 hours

Servicing your Xezo Automatic watch

Although components in your watch have been manufactured from first-rate materials, certain parts are subject to natural wear and tear. It is vital that all moving parts are properly lubricated at all times and that the watch is cleaned at regular intervals to remove dirty oil.

We therefore, recommend that you have your watch serviced about once every 3-5 years.

Contact us for after-sales service.

<http://www.xezo.com>