

GENERAL NOTES:

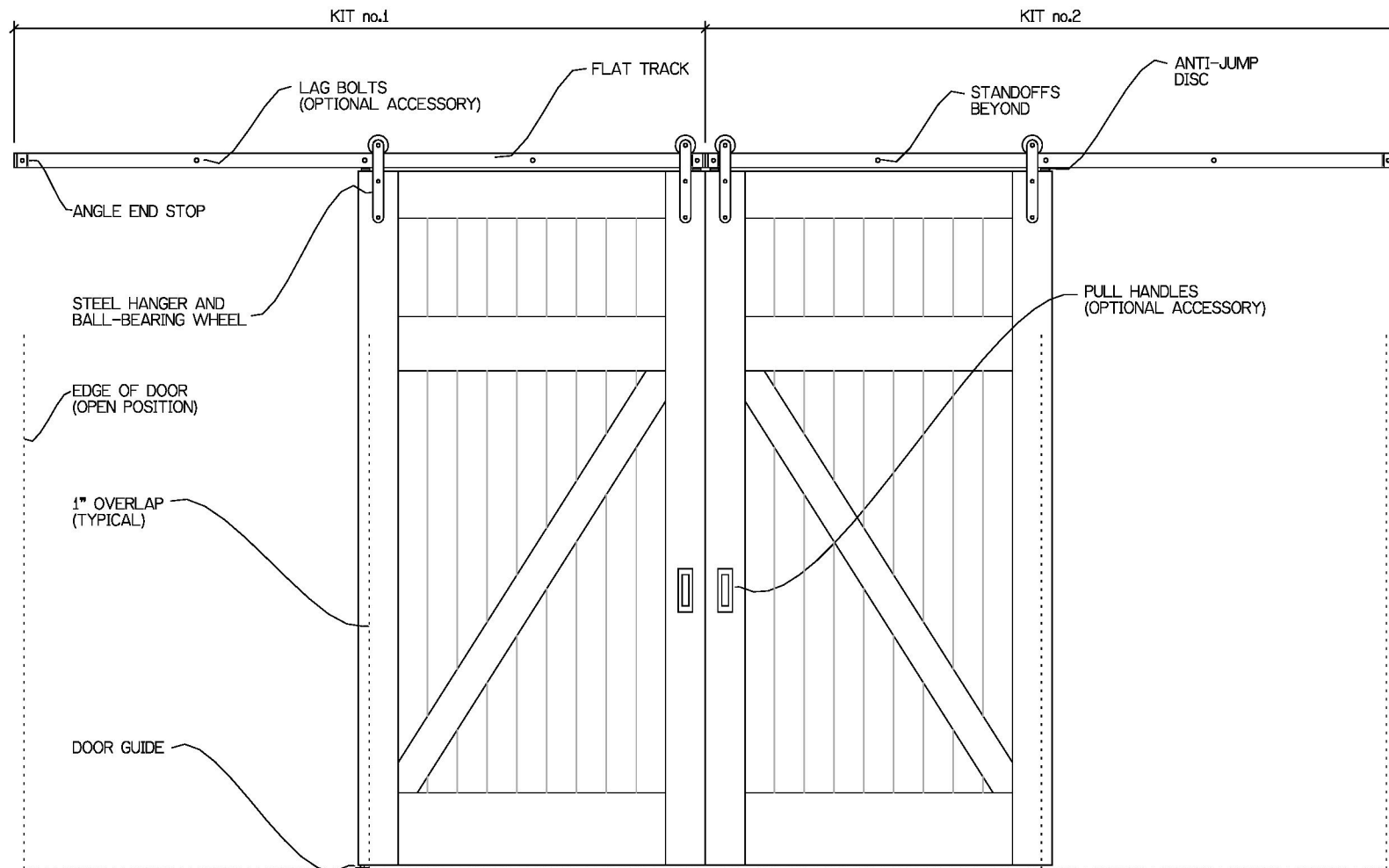
ACTUAL TRACK LENGTHS ARE 1" LESS THAN 2X THE NOMINAL DOOR WIDTH (i.e., A 36" WIDE DOOR WOULD HAVE A 71" TRACK).

TRACK STANDOFFS ARE AVAILABLE FOR DOORS UP TO 2-1/4" THICK.

DOORS MORE THAN 1" OVER TYPICAL SIZES (i.e. 37" ON A NOMINAL 6" TRACK) REQUIRE THE TYPICAL HANGER OFFSET BE ALTERED. SEE INSTALLATION CUT SHEET FOR MORE INFORMATION.

IF YOUR DOOR IS A CUSTOM SIZE (i.e. 40"), YOU WILL HAVE TO REPOSITION ONE END STOP, DRILL ONE HOLE AT DESIRED LOCATION AND USE HEX BOLT TO FASTEN (NOT INCLUDED). YOU MAY ALSO USE ADJUSTABLE END STOPS (OPTIONAL ACCESSORY) OR REQUEST A CUSTOM FABRICATION.

FOR BI-PARTING DOORS, BUTT THE TRACK OF EACH KIT END TO END TIGHTLY. JOINING TRACKS IS NOT NECESSARY.



GENERAL NOTES:

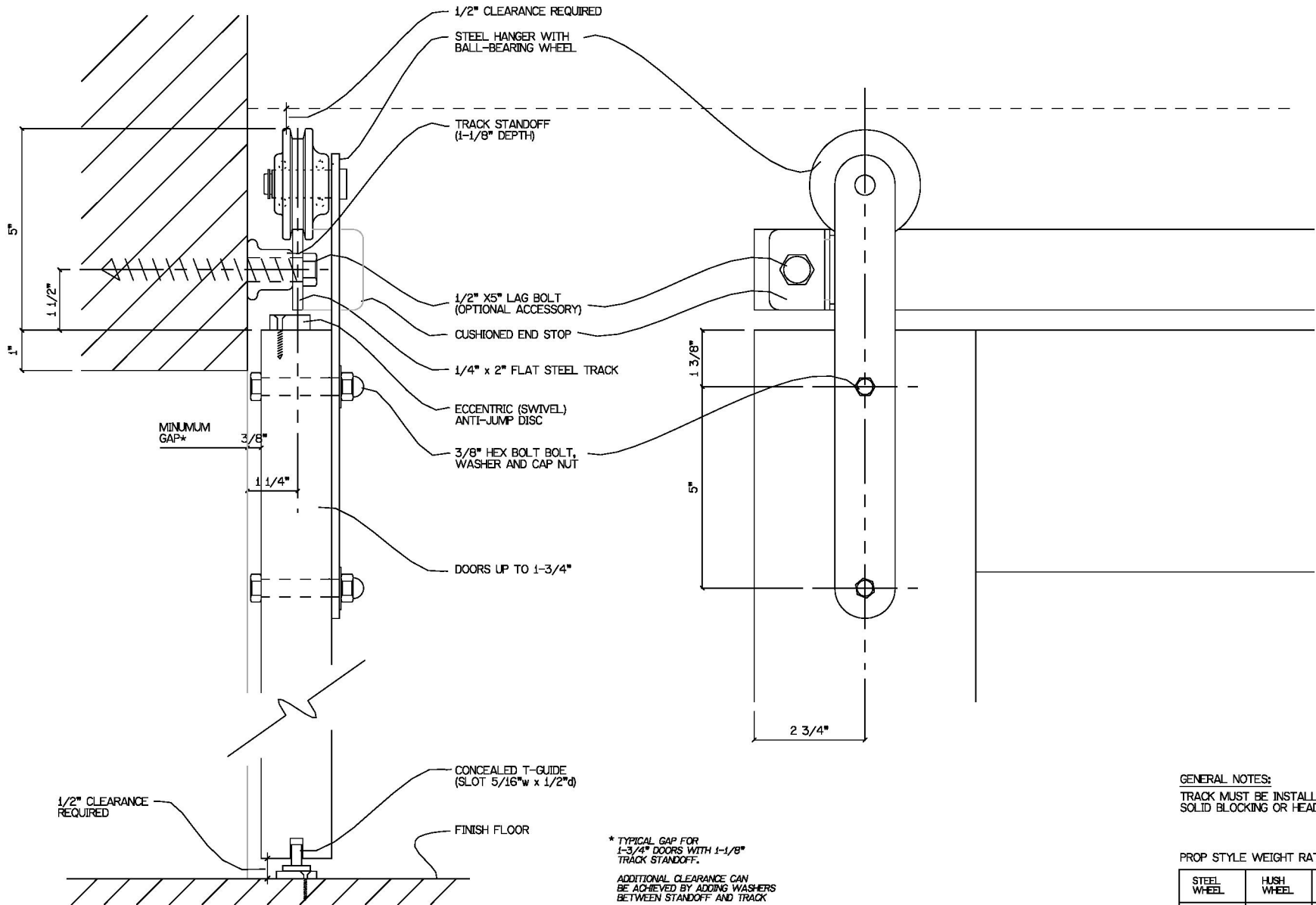
ACTUAL TRACK LENGTHS ARE 1" LESS THAN 2X THE NOMINAL DOOR WIDTH (i.e., A 36" WIDE DOOR WOULD HAVE A 71" TRACK).

TRACK STANDOFFS ARE AVAILABLE FOR DOORS UP TO 2-1/4" THICK.

DOORS MORE THAN 1" OVER TYPICAL SIZES (i.e. 37" ON A NOMINAL 6" TRACK) REQUIRE THE TYPICAL HANGER OFFSET BE ALTERED. SEE INSTALLATION CUT SHEET FOR MORE INFORMATION.

IF YOUR DOOR IS A CUSTOM SIZE (i.e. 40"), YOU WILL HAVE TO REPOSITION ONE END STOP. DRILL ONE HOLE AT DESIRED LOCATION AND USE HEX BOLT TO FASTEN (NOT INCLUDED). YOU MAY ALSO USE ADJUSTABLE END STOPS (OPTIONAL ACCESSORY) OR REQUEST A CUSTOM FABRICATION.

FOR BI-PARTING DOORS, BUTT THE TRACK OF EACH KIT END TO END TIGHTLY. JOINING TRACKS IS NOT NECESSARY.



MINIMUM GAP*

1/2" CLEARANCE REQUIRED

1/2" CLEARANCE REQUIRED
STEEL HANGER WITH BALL-BEARING WHEEL

TRACK STANDOFF (1-1/8" DEPTH)

1/2" X 5" LAG BOLT (OPTIONAL ACCESSORY)

CUSHIONED END STOP

1/4" x 2" FLAT STEEL TRACK

ECCENTRIC (SWIVEL) ANTI-JUMP DISC

3/8" HEX BOLT BOLT, WASHER AND CAP NUT

DOORS UP TO 1-3/4"

CONCEALED T-GUIDE (SLOT 5/16" w x 1/2" d)

FINISH FLOOR

* TYPICAL GAP FOR 1-3/4" DOORS WITH 1-1/8" TRACK STANDOFF.
ADDITIONAL CLEARANCE CAN BE ACHIEVED BY ADDING WASHERS BETWEEN STANDOFF AND TRACK

GENERAL NOTES:
TRACK MUST BE INSTALLED INTO SOLID BLOCKING OR HEAD CASING.

PROP STYLE WEIGHT RATINGS**

STEEL WHEEL	HUSH WHEEL	WOOD WHEEL
150 LBS	150 LBS	80 LBS

**RATING PER PAIR OF HANGERS

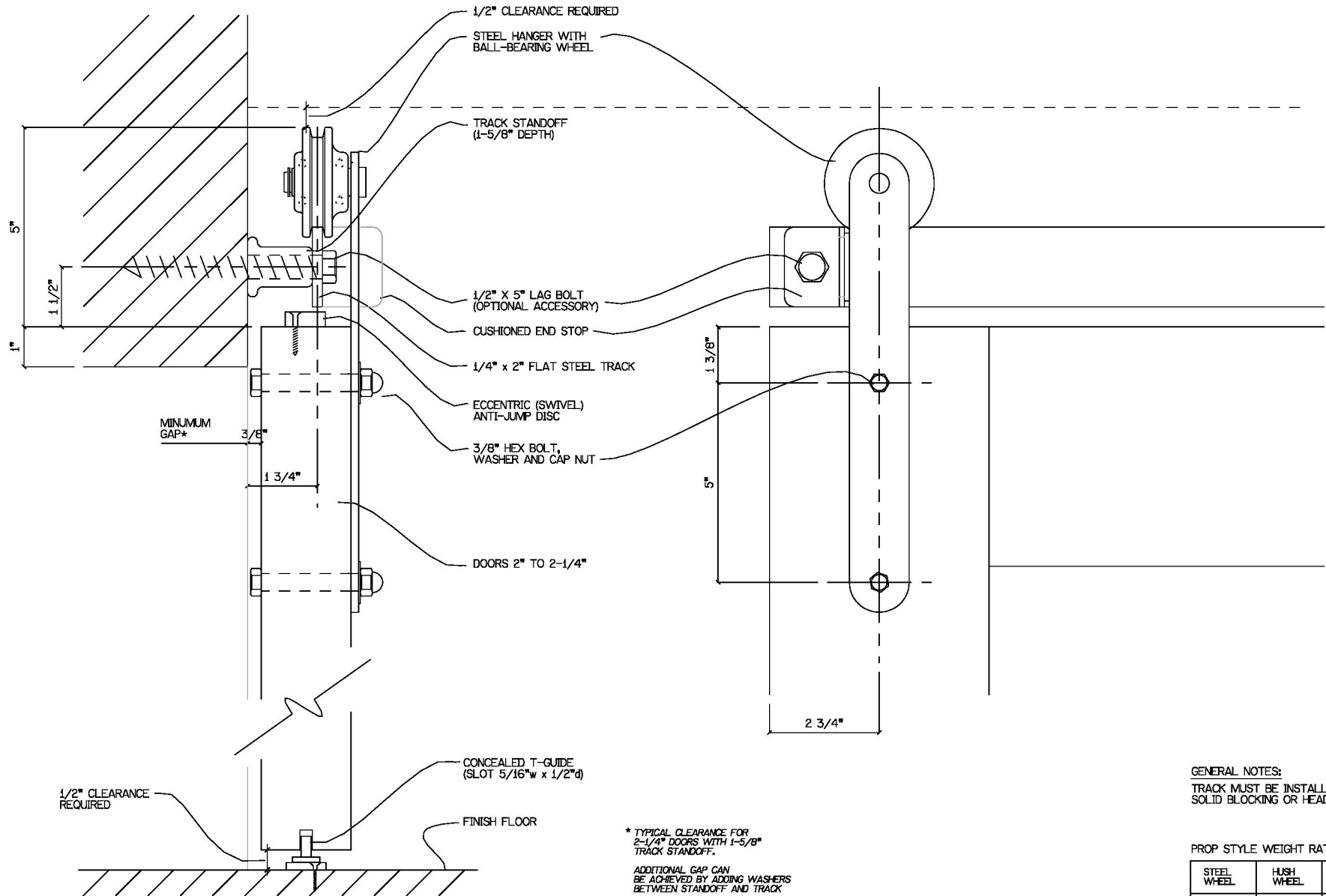
REAL SLIDING HARDWARE
Real Carriage Door Company
9803 44th AVE NW
GIG HARBOR, WA 98332

PROP FLAT TRACK
DESCRIPTION/NOTES: SECTION AND ELEVATION VIEWS

(DOORS UP TO 1-3/4")

THIS PRINT IS THE PROPERTY OF REAL CARRIAGE DOOR COMPANY, INC. AND IS LOANED TO THE RECIPIENT SUBJECT TO RETURN UPON DEMAND. ALL CONTENTS HEREIN ARE CONFIDENTIAL AND MUST NOT BE COPIED OR SUBMITTED TO OUTSIDE PARTIES FOR EXAMINATION WITHOUT THE EXPRESS WRITTEN CONSENT OF REAL CARRIAGE DOOR COMPANY, INC.

DRWG NO:
DATE:



MINIMUM GAP*

1/2" CLEARANCE REQUIRED

* TYPICAL CLEARANCE FOR 2-1/4" DOORS WITH 1-5/8" TRACK STANDOFF. ADDITIONAL GAP CAN BE ACHIEVED BY ADDING WASHERS BETWEEN STANDOFF AND TRACK

GENERAL NOTES:
TRACK MUST BE INSTALLED INTO SOLID BLOCKING OR HEAD CASING.

PROP STYLE WEIGHT RATINGS**

STEEL WHEEL	HUSH WHEEL	WOOD WHEEL
2000 LBS	2000 LBS	800 LBS

**RATING PER PAIR OF HANGERS

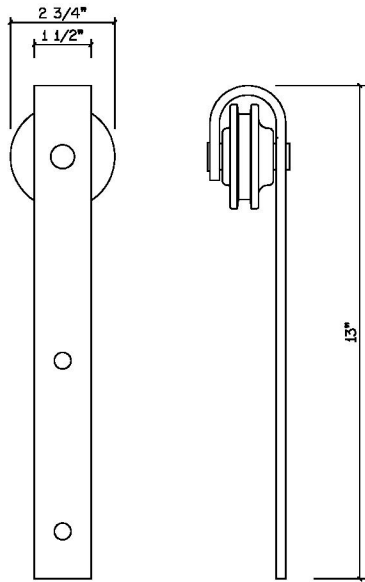
REAL SLIDING HARDWARE
Real Carriage Door Company
9803 44th AVE NW
GIG HARBOR, WA 98332

PROP FLAT TRACK
DESCRIPTION/NOTES: SECTION AND ELEVATION VIEWS

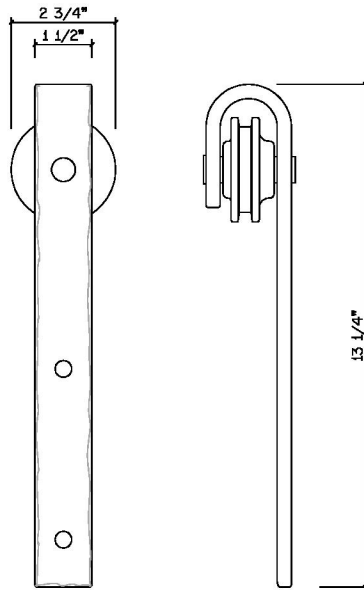
(DOORS 2" TO 2-1/4")

THIS PRINT IS THE PROPERTY OF REAL CARRIAGE DOOR COMPANY, INC. AND IS LOANED TO THE RECIPIENT SUBJECT TO RETURN UPON DEMAND. ALL CONTENTS HEREIN ARE CONFIDENTIAL AND MUST NOT BE COPIED OR SUBMITTED TO OUTSIDE PARTIES FOR EXAMINATION WITHOUT THE EXPRESS WRITTEN CONSENT OF REAL CARRIAGE DOOR COMPANY, INC.

DRWG NO:
DATE:

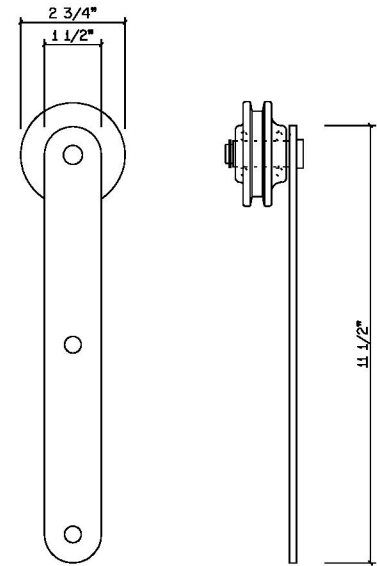


CLASSIC STYLE
HANGER

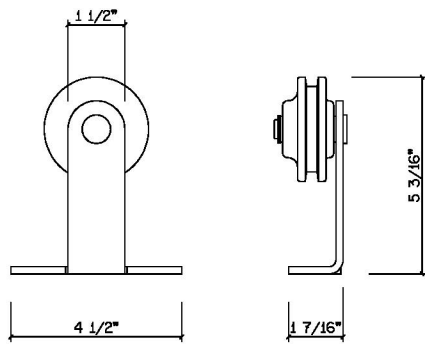


HAMMERED STYLE
HANGER

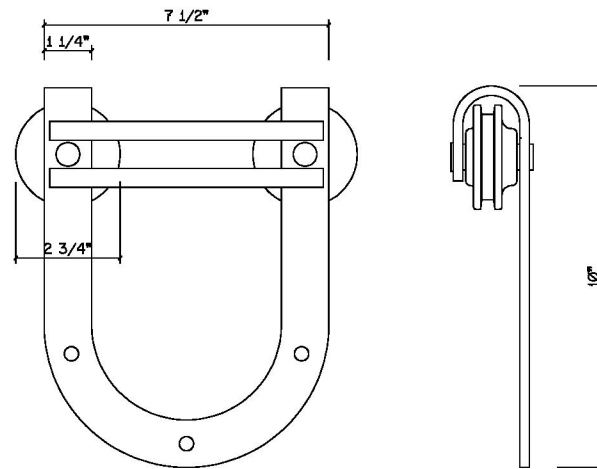
NOTE:
HAMMERED HANGERS
ARE HAND-FORGED
AND DIMENSIONS MAY
VARY SLIGHTLY



PROP STYLE
HANGER



AERO STYLE
HANGER



HORSESHOE STYLE
HANGER

REAL
SLIDING
HARDWARE
copyright 2013
Real Carriage
Door Company
9803 44th AVE NW
GIG HARBOR, WA 98332

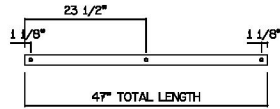
FLAT TRACK HANGER STYLES

DESCRIPTION/NOTES:

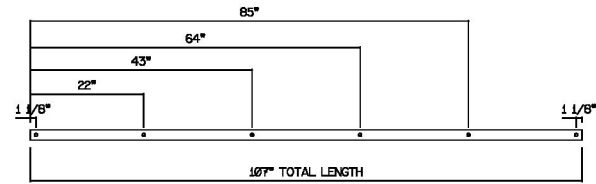
THIS PRINT IS THE PROPERTY OF REAL CARRIAGE
DOOR COMPANY, INC. AND IS LOANED TO THE
RECIPIENT SUBJECT TO RETURN UPON DEMAND.
ALL CONTENTS HEREIN ARE CONFIDENTIAL AND
MUST NOT BE COPIED OR SUBMITTED TO OUTSIDE
PARTIES FOR EXAMINATION WITHOUT THE
EXPRESS WRITTEN CONSENT OF REAL CARRIAGE
DOOR COMPANY, INC.

DRWG NO:
DATE:

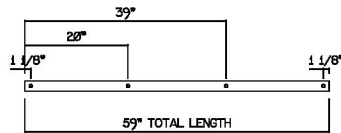
SF-04



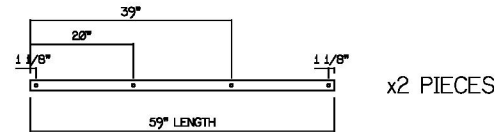
SF-09



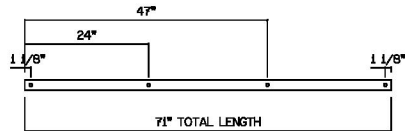
SF-05



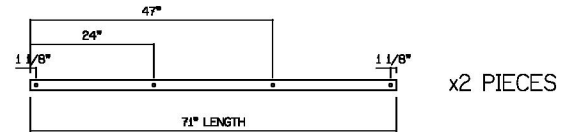
SF-10-2PC



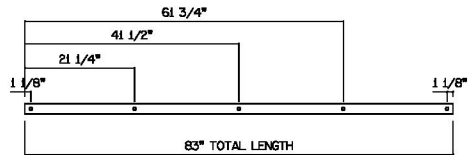
SF-06



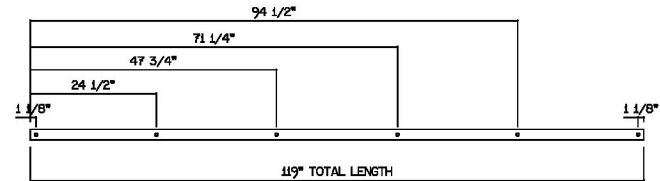
SF-12-2PC



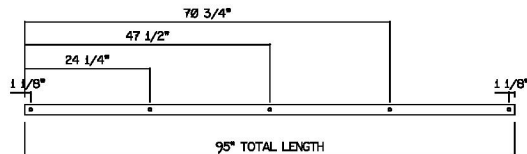
SF-07



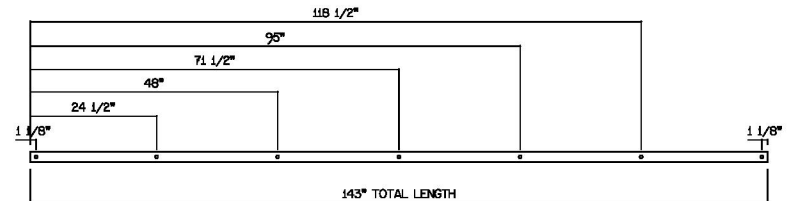
SF-10*



SF-08



SF-12*



*THESE ITEMS ARE TOO LONG FOR FEDEX AND MUST SHIP FREIGHT

FLAT TRACK STANDARD LENGTHS (CLASSIC, HORSESHOE, HAMMERED, PROP AND AERO STYLES)

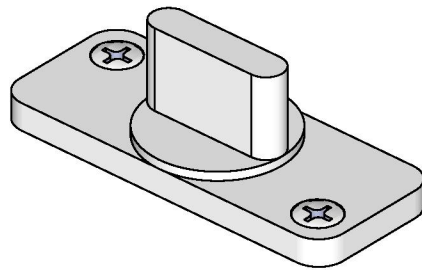
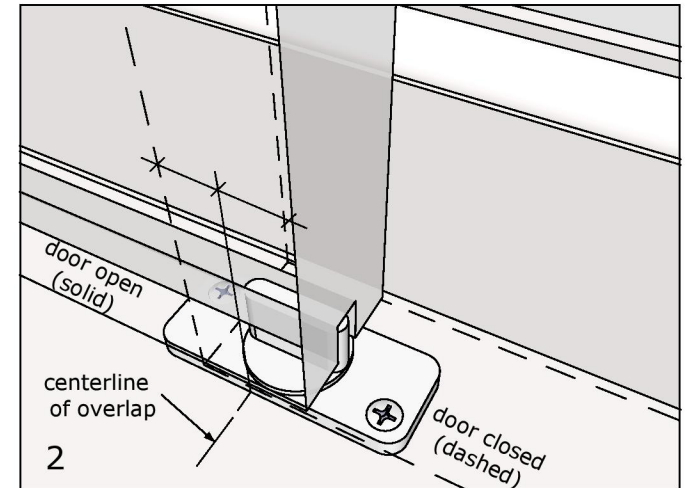
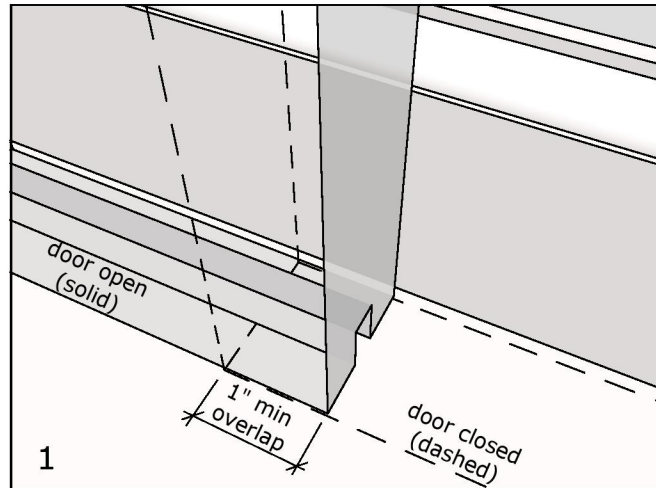
DESCRIPTION/NOTES: HOLE PATTERNS ARE EVENLY SPACED 24" ON CENTER OR LESS. STANDARD TRACK LENGTHS SHOWN. CUSTOM LENGTHS AVAILABLE.
NOTE: HOLE MEASUREMENTS ARE FOR GENERAL INFO ONLY AND NOT INTENDED FOR USE AS A DRILLING TEMPLATE.

To install:

Determine how wide the door 'overlap' will be. The overlap is the distance between the leading edge of the door when fully open, and the trailing edge of the door when fully closed (1).

Mark centerline of overlap and place center of guide on line (2).

Predrill and install on floor so door will hang plumb.

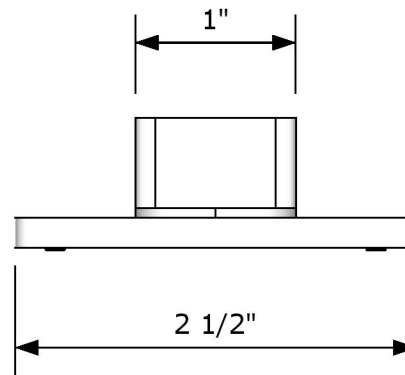


General Notes:

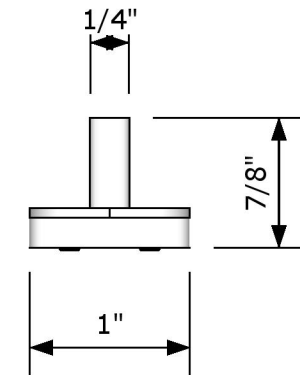
For use in wood doors when a semi-concealed look is desired.

Requires a 5/16"W x 1/2"H continuous slot in bottom of door

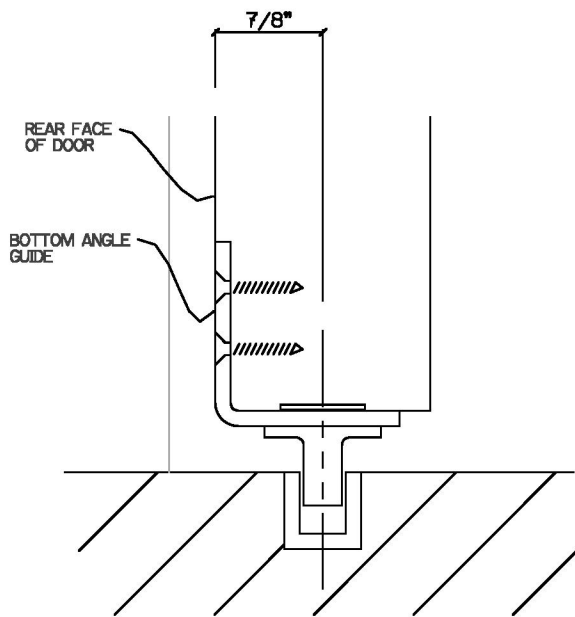
Smooth, high strength glide plastic guides door gently and quietly.



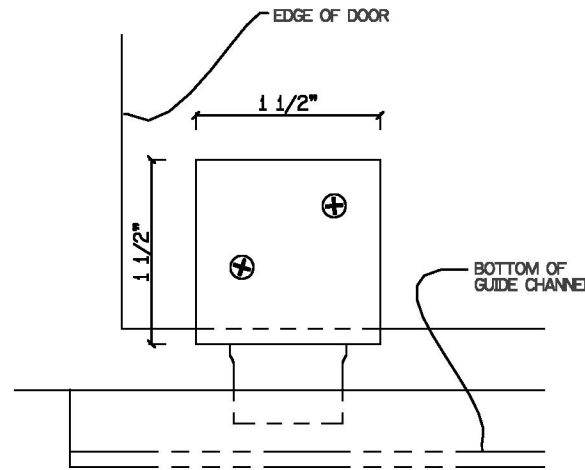
FRONT VIEW



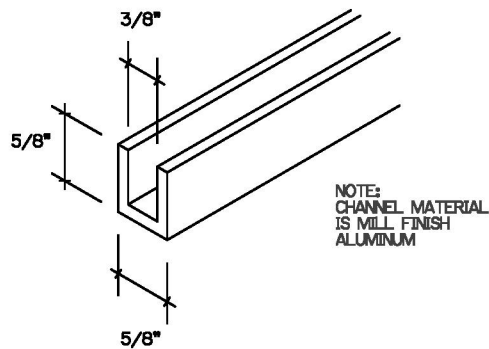
SIDE VIEW



SECTION VIEW

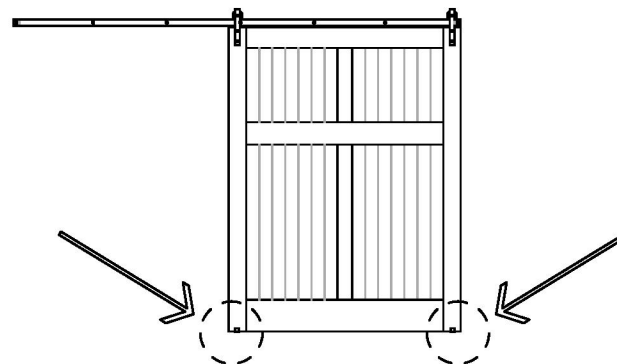


REAR VIEW



CHANNEL DIMENSIONS

NOTE:
CHANNEL MATERIAL
IS MILL FINISH
ALUMINUM



GUIDE LOCATIONS

GENERAL NOTES:

GUIDES DOOR AT FLOOR
AND KEEPS DOOR FROM
SWINGING IN AND OUT

INSTALL GUIDE TO REAR
OF DOOR AFTER DOOR IS
HUNG. DOOR SHOULD
HANG PLUMB TO WALL.

CHANNEL MAY BE SCREWED
TO SLOT IN A WOOD FLOOR
OR SET IN CONCRETE.
CHANNEL MUST BE COATED
WITH A BITUMINOUS OR
ASPHALT-BASED PAINT PRIOR
TO CONCRETE EMBEDMENT

USE FOR ADDED EXTERIOR
DOOR SECURITY / RIGIDITY

REAL
SLIDING
HARDWARE

copyright 2013

Real Carriage
Door Company

9803 44th AVE NW
GIG HARBOR, WA 98332

3/8" CHANNEL SYSTEM AND ANGLE GUIDE

DESCRIPTION/NOTES:

THIS PRINT IS THE PROPERTY OF REAL CARRIAGE
DOOR COMPANY, INC. AND IS LOANED TO THE
RECIPIENT SUBJECT TO RETURN UPON DEMAND.
ALL CONTENTS HEREIN ARE CONFIDENTIAL AND
MUST NOT BE COPIED OR SUBMITTED TO OUTSIDE
PARTIES FOR EXAMINATION WITHOUT THE
EXPRESS WRITTEN CONSENT OF REAL CARRIAGE
DOOR COMPANY, INC.

DRWG NO:

DATE: