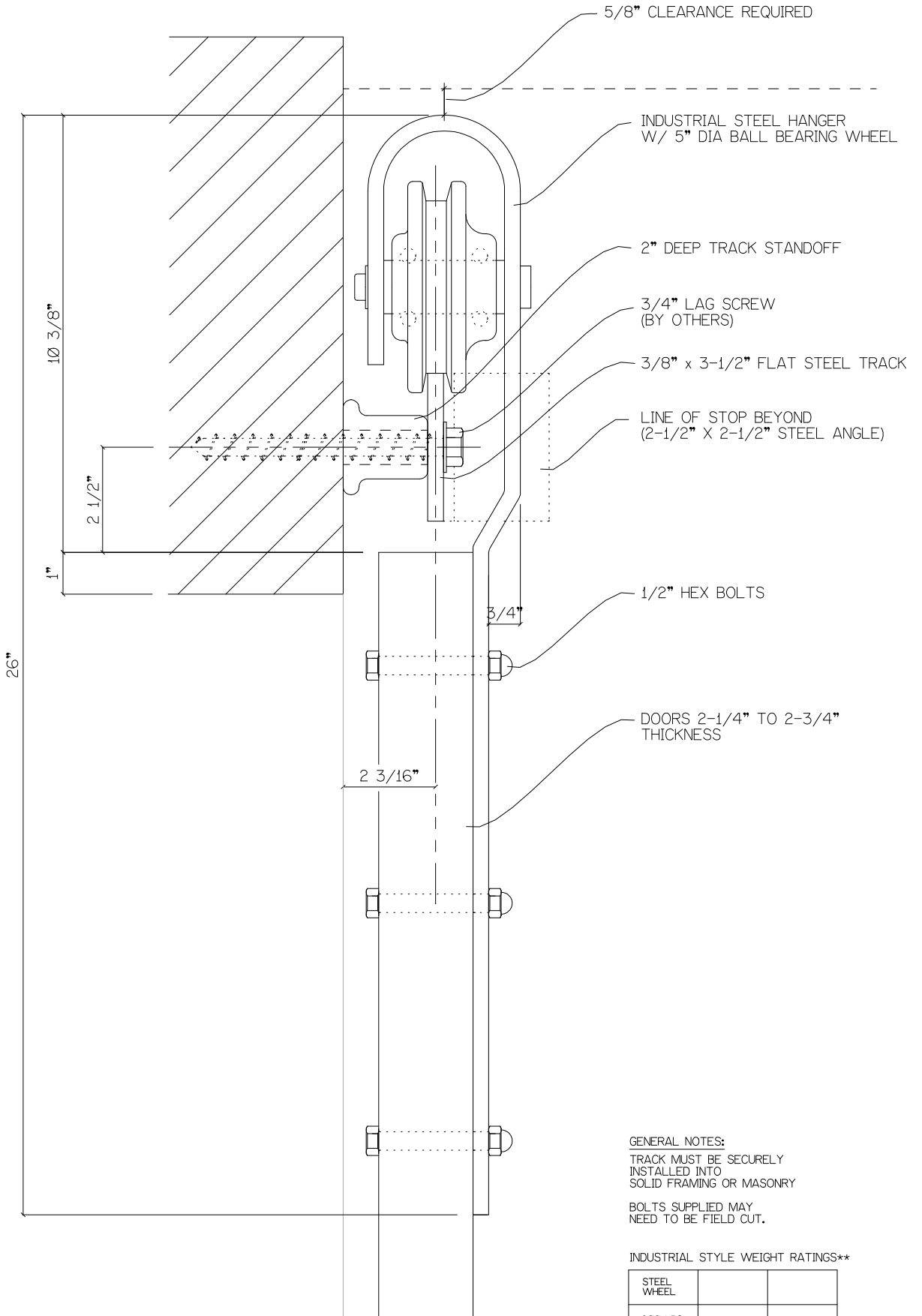


REALCRAFT
 9770 44th Ave NW
 Suite 104, Gig Harbor
 Washington - 98332

INDUSTRIAL FLAT TRACK (OFFSET)

DESCRIPTION/NOTES:



GENERAL NOTES:
 TRACK MUST BE SECURELY
 INSTALLED INTO
 SOLID FRAMING OR MASONRY
 BOLTS SUPPLIED MAY
 NEED TO BE FIELD CUT.

INDUSTRIAL STYLE WEIGHT RATINGS**

STEEL WHEEL		
800 LBS		

**RATING PER PAIR OF HANGERS

This print is property of RealCraft and is loaned to the recipient for reference purposes. All contents on this sheet are confidential and must not be copied, submitted, or shared with third parties for examination without RealCraft's express written consent.

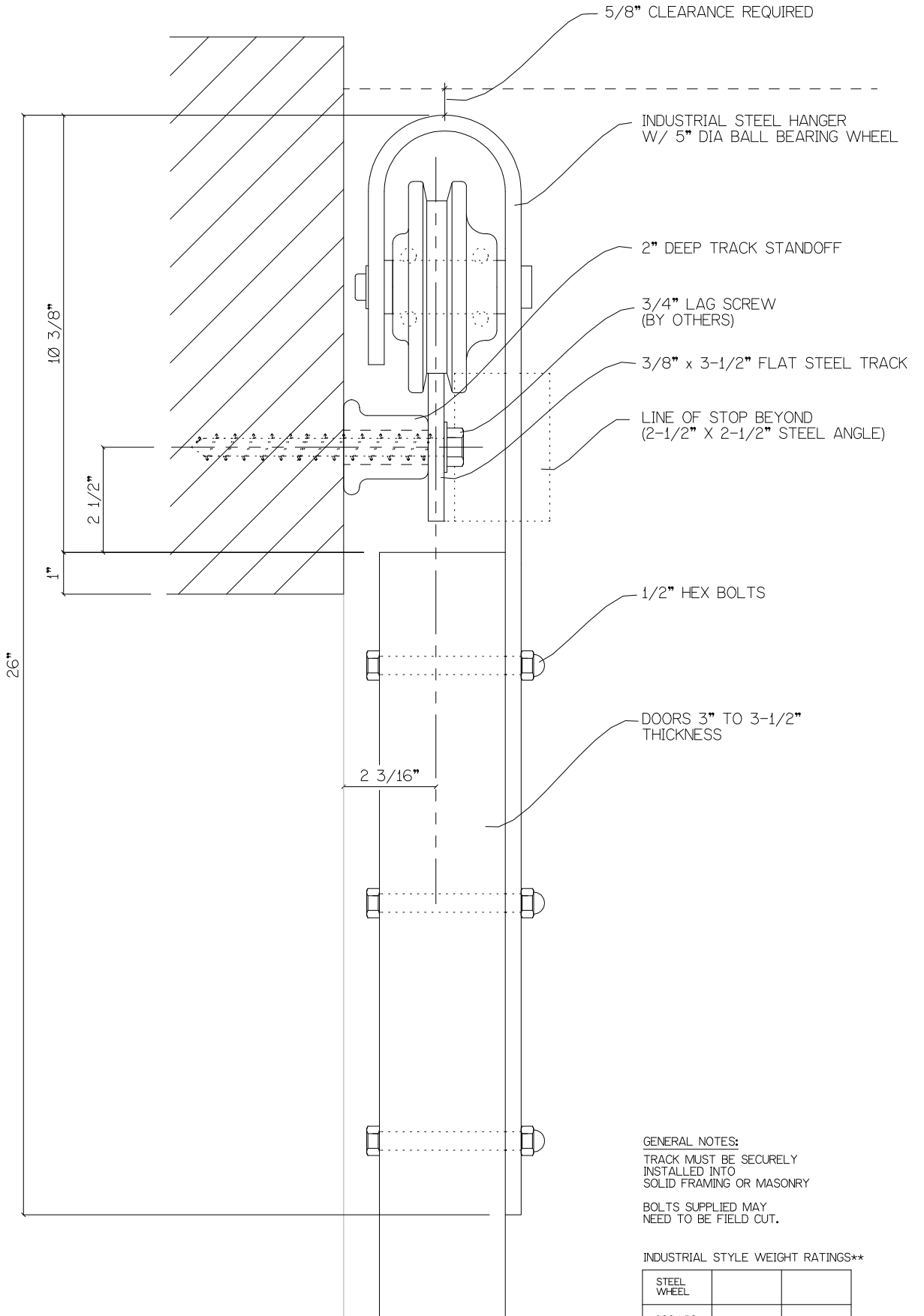
DRWG NO.:

DATE:

REALCRAFT
 9770 44th Ave NW
 Suite 104, Gig Harbor
 Washington - 98332

INDUSTRIAL FLAT TRACK (STRAIGHT)

DESCRIPTION/NOTES:



GENERAL NOTES:
 TRACK MUST BE SECURELY
 INSTALLED INTO
 SOLID FRAMING OR MASONRY
 BOLTS SUPPLIED MAY
 NEED TO BE FIELD CUT.

INDUSTRIAL STYLE WEIGHT RATINGS**

STEEL WHEEL		
800 LBS		

**RATING PER PAIR OF HANGERS

This print is property of RealCraft and is loaned to the recipient for reference purposes. All contents on this sheet are confidential and must not be copied, submitted, or shared with third parties for examination without RealCraft's express written consent.

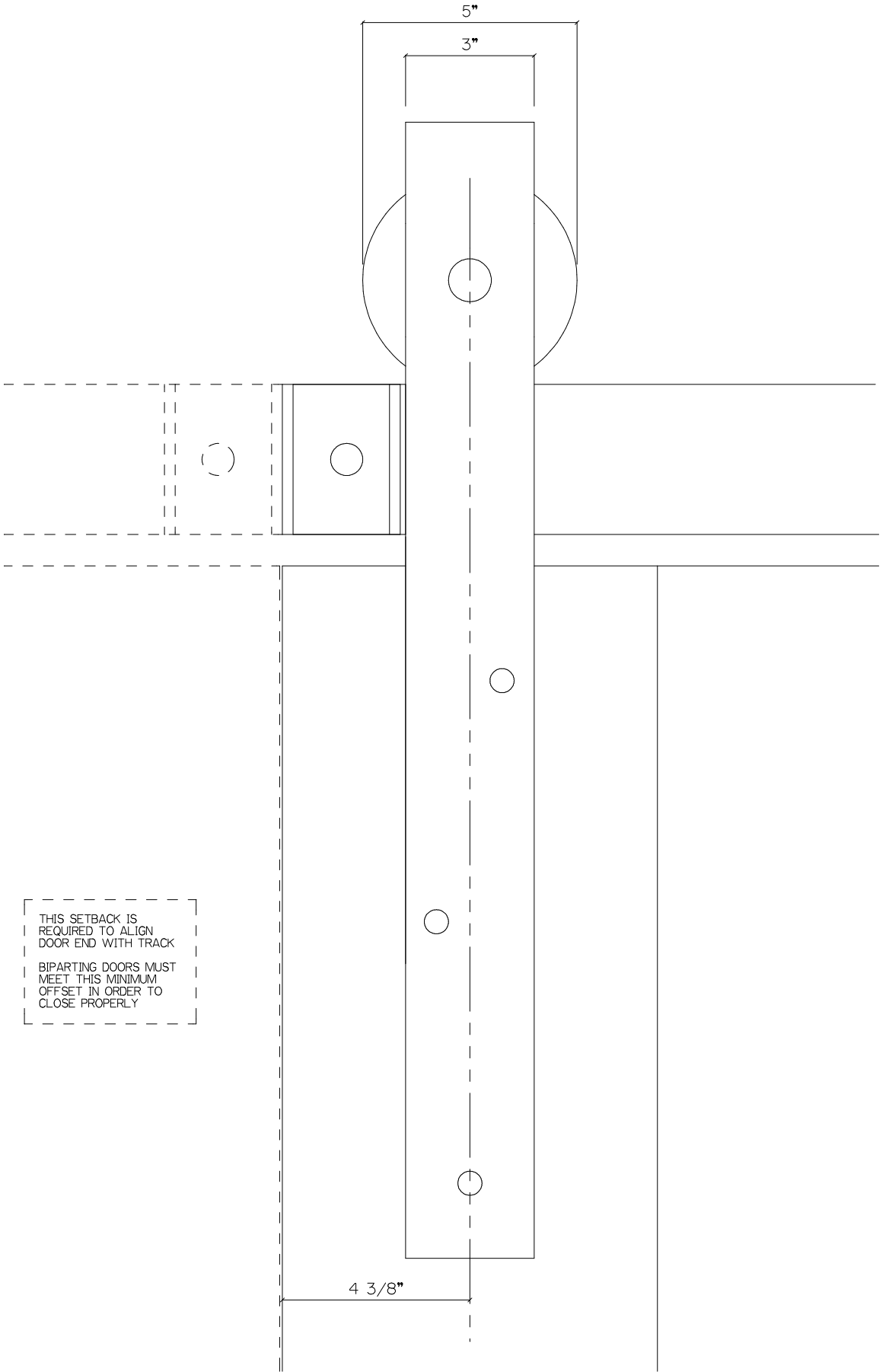
DRAWING NO.:

DATE:

REALCRAFT
9770 44th Ave NW
Suite 104, Gig Harbor
Washington - 98332

INDUSTRIAL FLAT TRACK (HANGERS SETBACK)

DESCRIPTION/NOTES:



This print is property of RealCraft and is loaned to the recipient for reference purposes. All contents on this sheet are confidential and must not be copied, submitted, or shared with third parties for examination without RealCraft's express written consent.

DRAWING NO.:

DATE: