

GENERAL NOTES:

ACTUAL TRACK LENGTHS ARE 1" LESS THAN 2X THE NOMINAL DOOR WIDTH (i.e., A 36" WIDE DOOR WOULD HAVE A 71" TRACK).

DOORS MORE THAN 1" OVER TYPICAL SIZES (i.e. 37" ON A NOMINAL 6" TRACK) REQUIRE THE TYPICAL HANGER OFFSET BE ALTERED. SEE INSTALLATION CUT SHEET FOR MORE INFORMATION.

IF YOUR DOOR IS A CUSTOM SIZE (i.e. 40"), THE HANGER MAY BE REPOSITIONED, OR YOU WILL HAVE TO REPOSITION ONE END STOP. DRILL ONE HOLE AT DESIRED LOCATION AND USE HEX BOLT TO FASTEN (NOT INCLUDED). YOU MAY ALSO USE ADJUSTABLE END STOPS (OPTIONAL ACCESSORY) OR REQUEST A CUSTOM FABRICATION.

FOR BI-PARTING DOORS, BUTT THE TRACK OF EACH KIT END TO END TIGHTLY. JOINING TRACKS IS NOT NECESSARY.

REALCRAFT
 9770 44th Ave NW
 Suite 104, Gig Harbor
 Washington - 98332

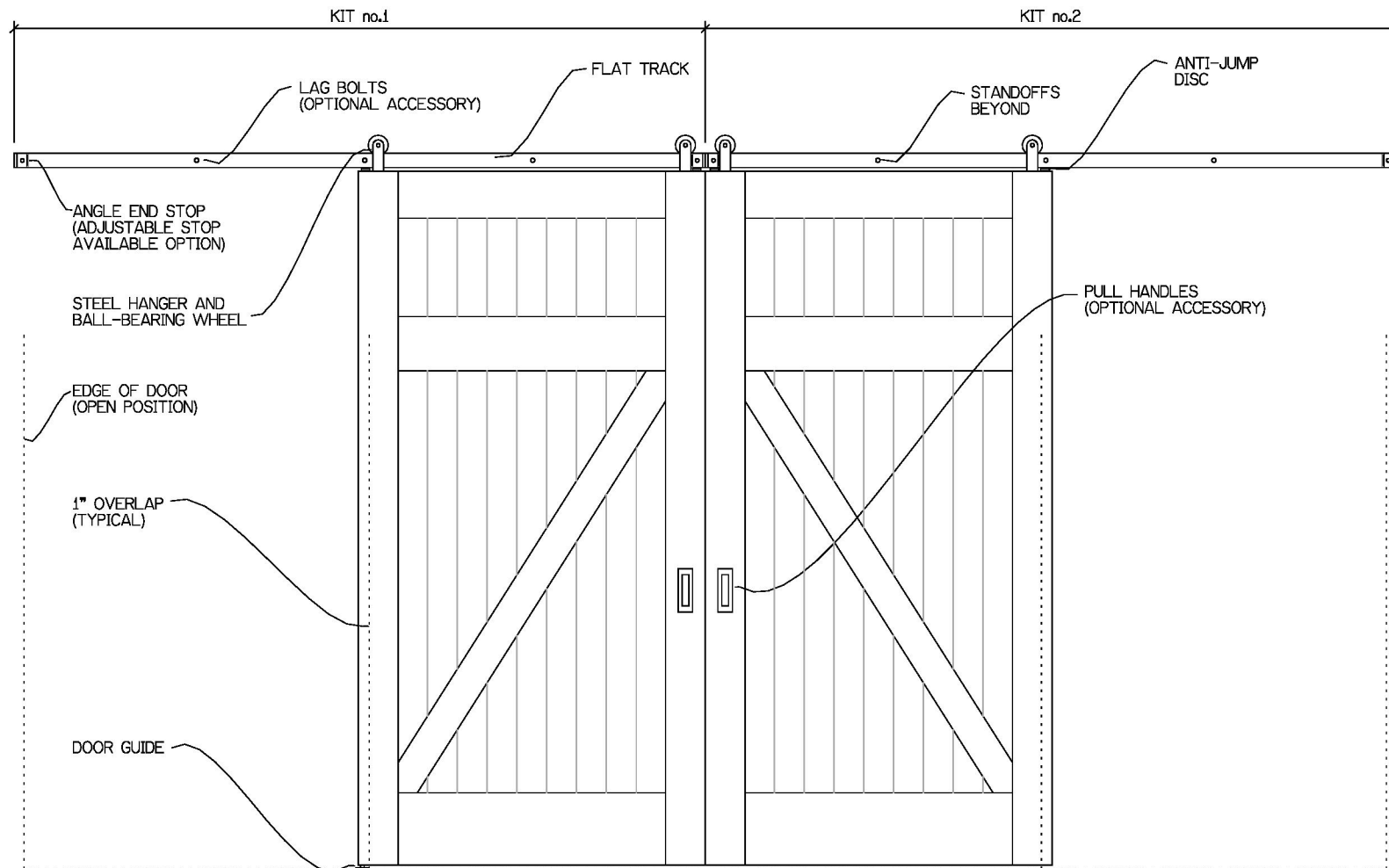
AERO FLAT TRACK - SINGLE DOOR OVERVIEW

DESCRIPTION/NOTES:

This print is property of RealCraft and is loaned to the recipient for reference purposes. All contents on this sheet are confidential and must not be copied, submitted, or shared with third parties for examination without RealCraft's express written consent.

DRWG NO:

DATE:



GENERAL NOTES:

ACTUAL TRACK LENGTHS ARE 1" LESS THAN 2X THE NOMINAL DOOR WIDTH (i.e., A 36" WIDE DOOR WOULD HAVE A 71" TRACK).

DOORS MORE THAN 1" OVER TYPICAL SIZES (i.e. 37" ON A NOMINAL 6" TRACK) REQUIRE THE TYPICAL HANGER OFFSET BE ALTERED. SEE INSTALLATION CUT SHEET FOR MORE INFORMATION.

IF YOUR DOOR IS A CUSTOM SIZE (i.e. 40"), THE HANGER MAY BE REPOSITIONED, OR YOU WILL HAVE TO REPOSITION ONE END STOP. DRILL ONE HOLE AT DESIRED LOCATION AND USE HEX BOLT TO FASTEN (NOT INCLUDED). YOU MAY ALSO USE ADJUSTABLE END STOPS (OPTIONAL ACCESSORY) OR REQUEST A CUSTOM FABRICATION.

FOR BI-PARTING DOORS, BUTT THE TRACK OF EACH KIT END TO END TIGHTLY. JOINING TRACKS IS NOT NECESSARY.

REALCRAFT

9770 44th Ave NW
Suite 104, Gig Harbor
Washington - 98332

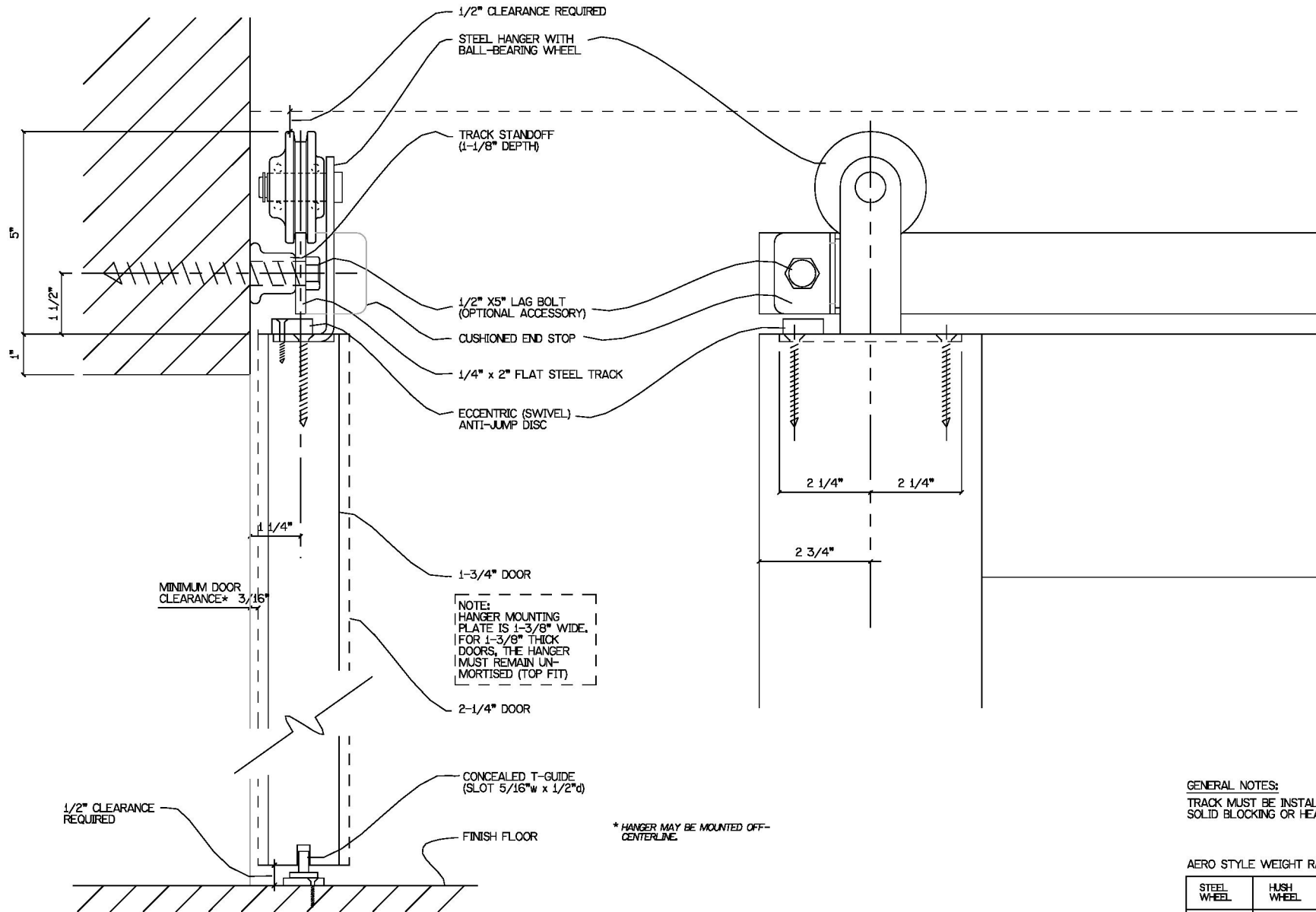
AERO FLAT TRACK - BI-PARTING DOORS OVERVIEW

DESCRIPTION/NOTES:

This print is property of RealCraft and is loaned to the recipient for reference purposes. All contents on this sheet are confidential and must not be copied, submitted, or shared with third parties for examination without RealCraft's express written consent.

DRWG NO:

DATE:



MINIMUM DOOR CLEARANCE* 3/16"

NOTE:
HANGER MOUNTING
PLATE IS 1-3/8" WIDE.
FOR 1-3/8" THICK
DOORS, THE HANGER
MUST REMAIN UN-
MORTISED (TOP FIT)

* HANGER MAY BE MOUNTED OFF-CENTERLINE.

GENERAL NOTES:
TRACK MUST BE INSTALLED INTO
SOLID BLOCKING OR HEAD CASING.

AERO STYLE WEIGHT RATINGS**

STEEL WHEEL	HUSH WHEEL	WOOD WHEEL
150 LBS	150 LBS	80 LBS

**RATING PER PAIR OF HANGERS

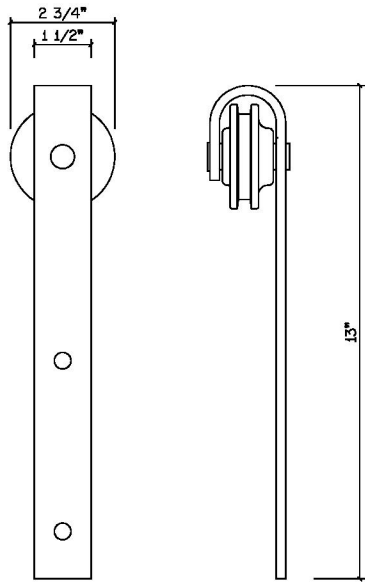
REALCRAFT
9770 44th Ave NW
Suite 104, Gig Harbor
Washington - 98332

AERO FLAT TRACK

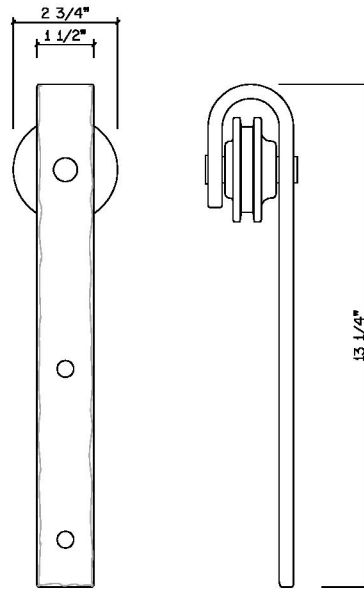
DESCRIPTION/NOTES: SECTION AND ELEVATION VIEWS

This print is property of RealCraft and is loaned to the recipient for reference purposes. All contents on this sheet are confidential and must not be copied, submitted, or shared with third parties for examination without RealCraft's express written consent.

DRWG NO:
DATE:

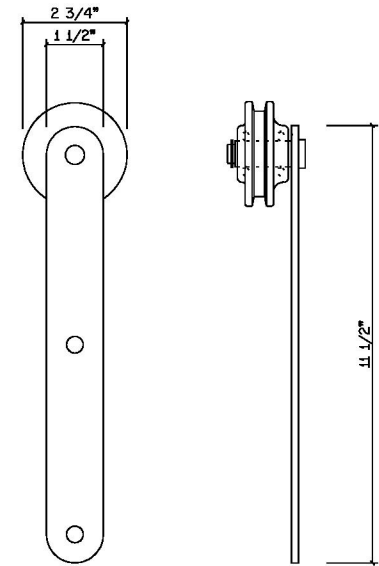


CLASSIC STYLE
HANGER

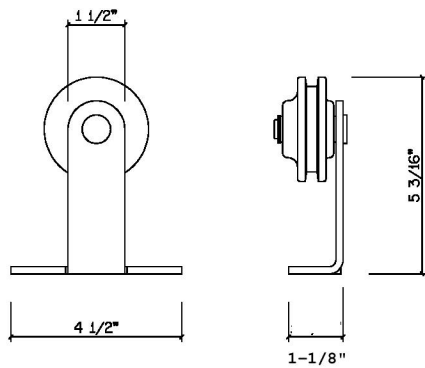


HAMMERED STYLE
HANGER

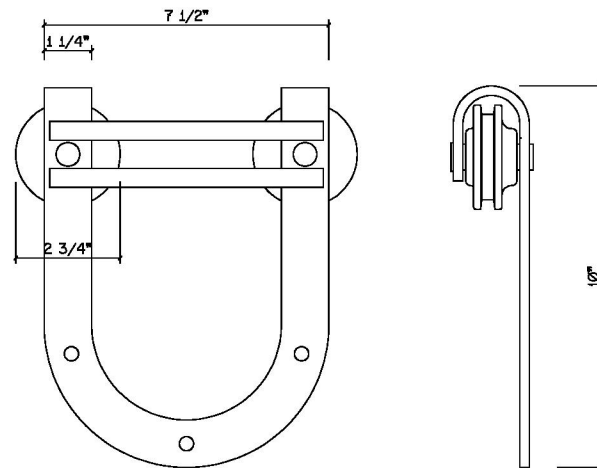
NOTE:
HAMMERED HANGERS
ARE HAND-FORGED
AND DIMENSIONS MAY
VARY SLIGHTLY



PROP STYLE
HANGER



AERO STYLE
HANGER



HORSESHOE STYLE
HANGER

REALCRAFT
9770 44th Ave NW
Suite 104, Gig Harbor
Washington - 98332

FLAT TRACK HANGER STYLES

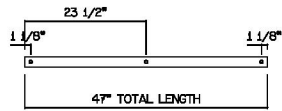
DESCRIPTION/NOTES:

This print is property of RealCraft and is loaned to the recipient for reference purposes. All contents on this sheet are confidential and must not be copied, submitted, or shared with third parties for examination without RealCraft's express written consent.

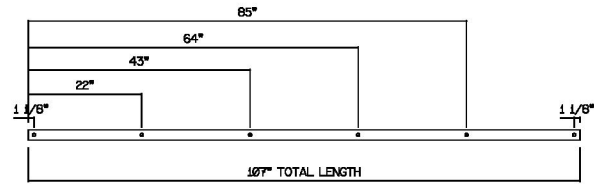
DRWG NO:

DATE:

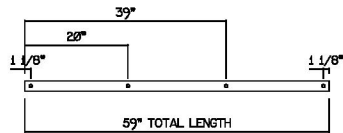
SF-04



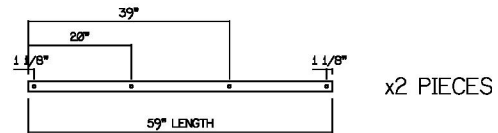
SF-09



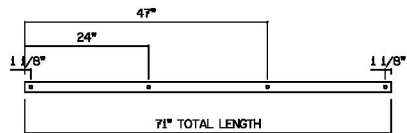
SF-05



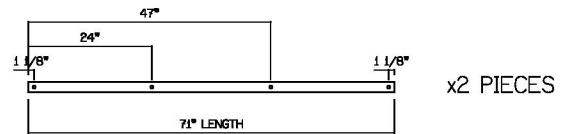
SF-10-2PC



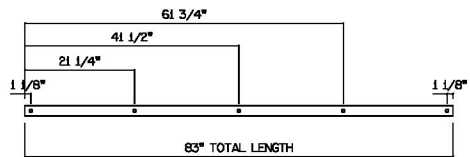
SF-06



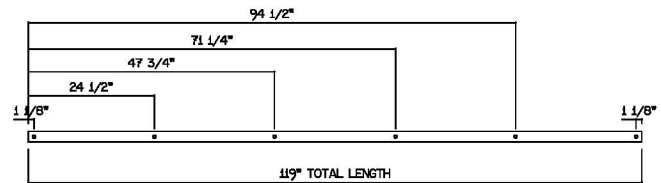
SF-12-2PC



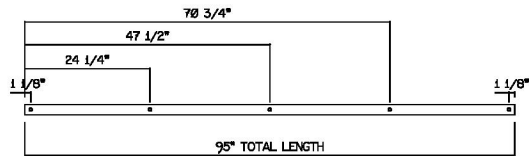
SF-07



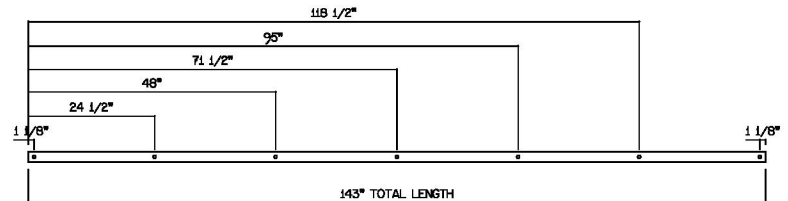
SF-10*



SF-08



SF-12*



*THESE ITEMS ARE TOO LONG FOR FEDEX AND MUST SHIP FREIGHT

REALCRAFT
 9770 44th Ave NW
 Suite 104, Gig Harbor
 Washington - 98332

FLAT TRACK STANDARD LENGTHS (CLASSIC, HORSESHOE, HAMMERED, PROP, AND AERO STYLE)

DESCRIPTION/NOTES: HOLE PATTERNS ARE EVENLY SPACED 24" ON CENTER OR LESS. STANDARD TRACK LENGTHS SHOWN. CUSTOM LENGTHS AVAILABLE.
 NOTE: HOLE MEASUREMENTS ARE FOR GENERAL INFO ONLY AND NOT INTENDED FOR USE AS A DRILLING TEMPLATE.

This print is property of RealCRAFT and is loaned to the recipient for reference purposes. All contents on this sheet are confidential and must not be copied, submitted, or shared with third parties for examination without RealCRAFT's express written consent.

DRWG NO:

DATE: