

# REALCRAFT

## CARRIAGE DOORS INSTALLATION

**Note:** Strike plates and/or jamb drilling are not done by RealCraft. This is because jobsite conditions can affect the strike plate and strike plate prep is best done by the installer for the most secure and precise fit.

Prior to installation, doors must be stored horizontally off the floor with cross support in a climate controlled environment. Recommended storage conditions: humidity between 25% to 55% and temperature of 50 to 90 degrees Fahrenheit. Improper storage of doors prior to installation may result in warping.

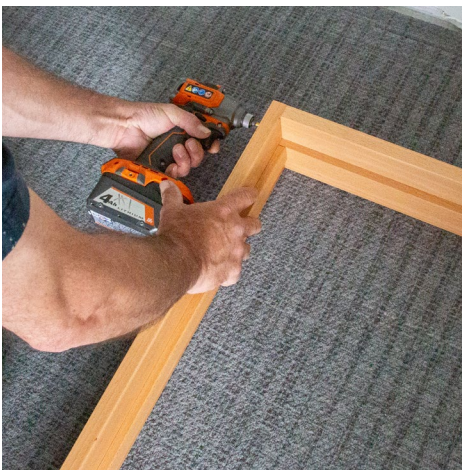
### What you'll get:

- Two Door Slabs
- Door Jamb (may ship unassembled due to unit size)
- Hinges
- White Oak Threshold or Driveable Aluminum Threshold
- Astragal (wood piece attached to the meeting edge of a pair of doors to seal the gap.)

### Things you will need:

- Level (at least 3ft long)
- Drill
- Shims
- Screws
- Hammer or mallet (mallet is kinder to wood)
- Pry bar
- Tape measure
- Caulk/Silicone
- Nails
- Airbag
- Utility knife (for removing glass protection)
- Chisel (for adjusting hinge notches)

## HOW TO INSTALL YOUR DOORS



**Step 1.** Assemble the jamb using the pre-drilled holes.

**Step 2.** First, measure and confirm the rough opening size. Next, assess the assembled jamb dimensions to ensure it fits the rough opening accurately.

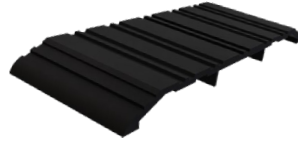


**Step 3.** Spread silicone between the threshold and jamb legs to prevent water damage.



**Step 4.** Test fit the jamb in the rough opening. Lay several thick beads of adhesive silicone below the threshold before installing.

# THRESHOLD NOTICE



## Aluminum Threshold

For cutting Aluminum thresholds that are .5" (a half-inch) thick:

- a. Measure from the bottom hinge to the bottom of the door
- b. Determine how big of a gap you want between the threshold and bottom of the door. Min. of 3/16" and Max. of 11/16".
- c. Add 0.5" (half-inch) thickness to the gap you chose and write it down.
- d. Pull tape measure from the bottom hinge on the jamb leg, mark your measurement, and then make the cut.

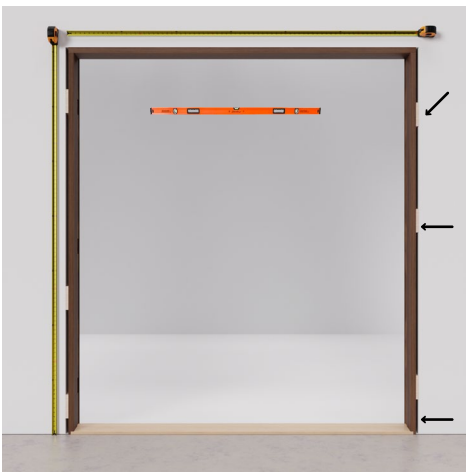
The jamb legs should sit on the floor, and the threshold will need to be cut to fit inside the jamb.



## White Oak Threshold

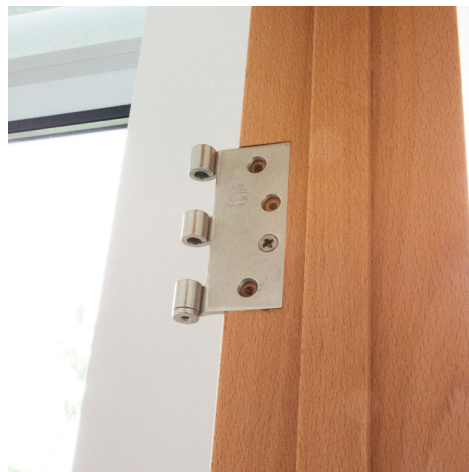
Our White Oak Thresholds are custom made for a perfect fit for your door.

Verify that the threshold will fit in the opening. Apply three beads of silicone to the sub-floor and set the threshold firmly in place.

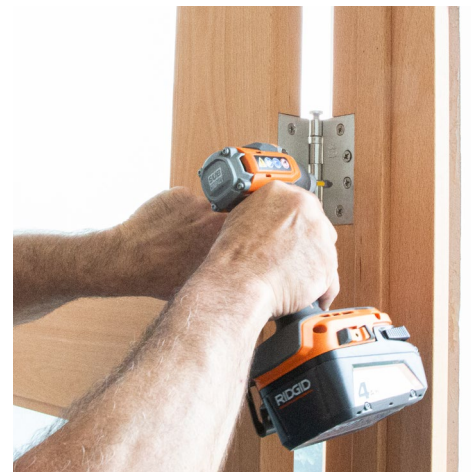


**Step 5.** Place the jamb and threshold in the opening, securing with shims for a snug, even fit. Confirm it's square by ensuring diagonal corner-to-corner measurements match. Check jamb legs for plumb with a level so your doors are easier to hang.

**Step 6.** Use mallet to ensure the unit is plumb. Check with a level and measuring tape to ensure that the unit is square and plumb.



**Step 7.** Screw the hinges onto the jamb and onto the door slabs with one screw per hinge. Do not fully tighten the screw so that you can adjust the hinges if necessary.



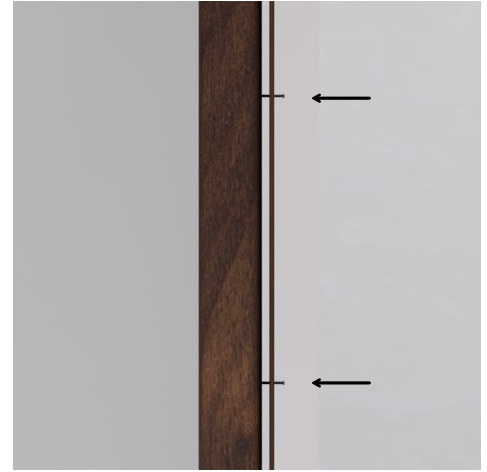
**Step 8.** Use airbags so that the doors are flush with hinge prep in the jamb. Line up the hinges on the door with the hinges on the jamb, one hinge pair at a time, then set the pin. You may need to continue adding shims at this point. Once all three hinges are pinned, you can add the rest of the hinge screws but do not fully tighten them until after step 9.



**Step 9.** Ensure the doors fit correctly by closing them and adjusting shims for the best fit and even gaps. Maintain equal gap between door slabs at top and bottom. Adjust using shims/hinges until gapping is uniform, then secure hinges. Finally, check for any binding issues.



**Step 10.** Screw or nail the jamb to the studs behind the weatherstripping, so that the screws are concealed. Screws recommended.



**Step 11.** Attach the astragal over the gap between the doors using screws, centering it for an optimal fit.

**For outswing doors:** attach it to the active door (the door with the handle).

**For inswing doors:** attach it to the inactive door.

The astragal conceals the gap, enhancing security and weather sealing.

## CANE BOLTS

The top and bottom cane bolts secure the passive door from the interior when closed. In most cases, we recommend an offset cane bolt for the top (to clear the weather-stripped jamb.) and a straight cane bolt for the bottom. Alternatively, a straight bolt at the top with a mounting block will accommodate the weather stripping.



## QUESTIONS?

info@realcraft.com  
(253) 853-3815  
RealCraft.com