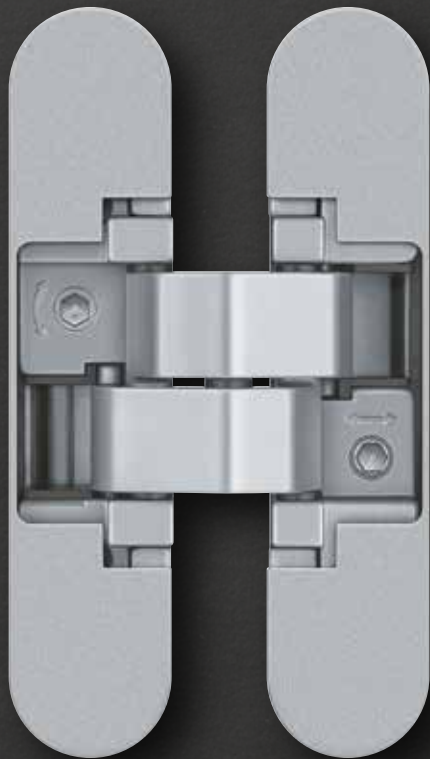


# AN 170 3D

---

For 1-3/8" thick  
residential interior doors





## QUALITY MADE IN ITALY SINCE 1973

Anselmi & C. srl is an Italian manufacturer of concealed hinge systems and hardware and a member of the SIMONSWERK Group since 2017. The traditional family business is located in the Italian town of Roncade, near Venice. The company was founded in 1973 by Bepi Anselmi, initially focusing on hinges for high-quality furniture and then later on concealed hinge systems for residential interior doors. With the quality-orientated view, the Anselmi concealed hinge program matches perfectly with the product range and the philosophy of SIMONSWERK.

From the first idea to the prototyping, from the creation of the molds to the assembly of the hinges, all aspects related to the production of the hinges take place within the facilities of Anselmi. Sustainable and environmentally-friendly processes are part of the company philosophy and are achieved through an efficient production that puts recycling of resources and energy saving in the forefront. Before releasing the product for sales, hinges are tested inside the internal test area where load capacity tests and cycle tests are performed. Anselmi has also introduced a quality management system and is certified according to the international standard ISO 9001.

## AN 170 3D

For residential interior doors with a 1-3/8" thickness

**Hinge** up to 60 kg (132 lbs.)

### Product Features

- Completely concealed hinge system
- For wood frames
- For flush residential doors
- Easily adjustable in three dimensions (side +/- 1.5 mm (0.059"), height +/- 2.5 mm (0.098"), compression +/- 1.0 mm (0.039"))

### Technical Data

Load capacity	60.0 kg (132 lbs.)
Overall length	110.0 mm (4.331")
Width (frame)	24.0 mm (0.945")
Width (door)	24.0 mm (0.945")
Router bit	1/2"
Collar ring diameter	1"
Opening angle	180°

### Finishes

Colored finishes: Rustic Umber (AN 012), Black (AN 018), Aluminum Chrome (AN 036), Satin Nickel (AN 044), RAL 9016 Traffic White (AN 049)

### Combinations

Receiver	Casing frame	AN 140 3D FZ
----------	--------------	--------------

### Installation Tools

Jig	Universal milling frame	
Frame/Door	Routing template	No. 5 251156 6

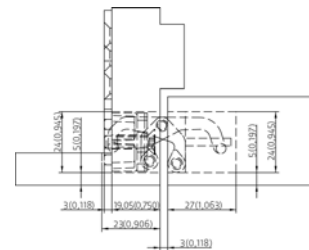
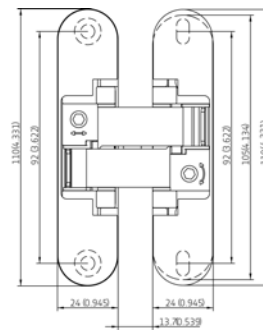
### Note

**i** The load capacity mentioned above refers to the use of 2 hinges per door leaf (900 x 2100 mm (35.433" x 82.677")).

Included screws:

Frame side: Countersunk head screws DIN 7505 A, Diameter 4.5 mm

Door side: Pan head screws DIN 7505 B, Diameter 4.5 mm





## AN 140 3D FZ

For residential doors with casing frames

**Fixing**

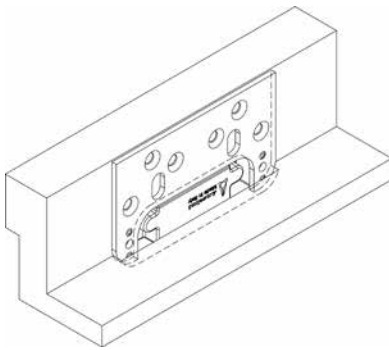
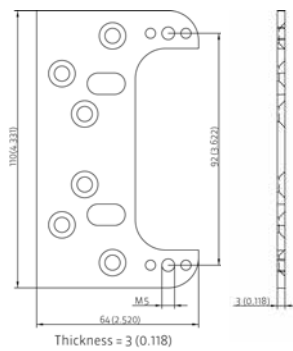
### Combinations

Hinge

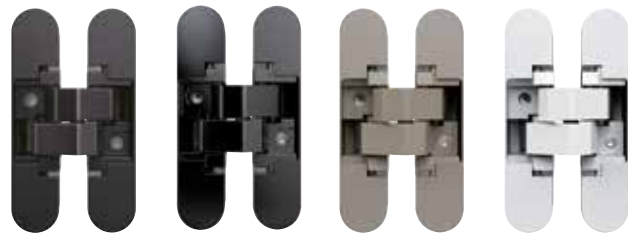
AN 170 3D

### Note

**i** Shims and screws (M5 x 20) are included.



## Colored Finishes



Rustic Umber  
(AN 012)

Black  
(AN 018)

Satin Nickel  
(AN 044)

RAL 9016  
Traffic White  
(AN 049)

## Preparation and Installation

### Frame and door prep

Perform routing according to Anselmi routing data. Use router bit with a  $\varnothing$  of 1/2" and collar ring  $\varnothing$  1".

### Installation of hinge to door panel

Affix door part with enclosed wood screws.

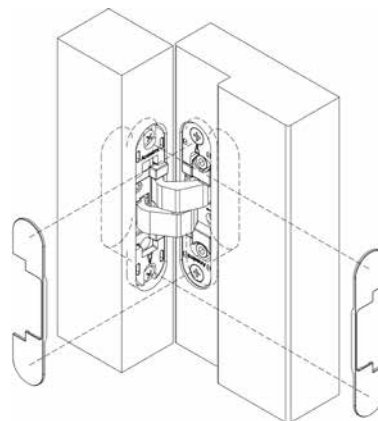
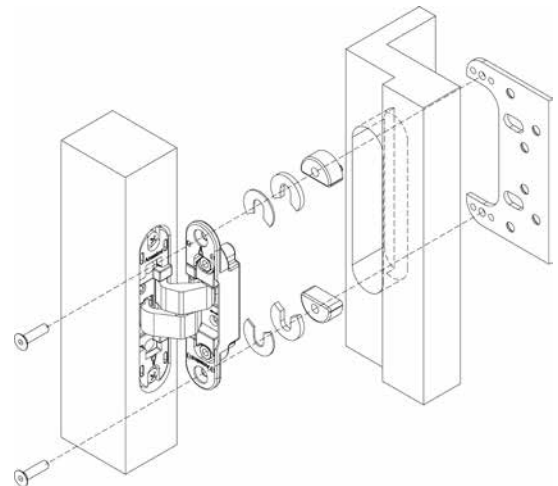
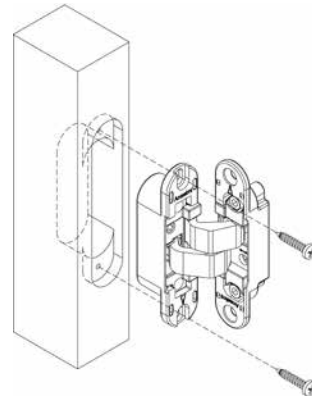
### Installation of hinge to frame

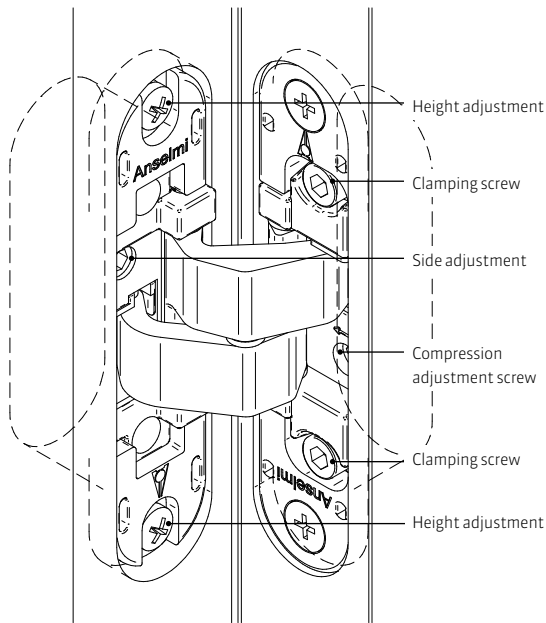
#### Block frame

Affix frame part with enclosed wood screws.

#### Standard 3/4" frame

Standard installation requires a fixing plate. This is not required when using a block frame. Affix the fixing plate with the appropriate screws (not included) behind the casing frame. Affix the hinge by using the enclosed M5 screws. To ensure flush hinge installation, shims are provided with the fixing plate.





## Adjustment

### Three way adjustable

Side	+/- 1.5 mm (0.059")
Height	+/- 2.5 mm (0.098")
Compression	+/- 1.0 mm (0.039")

### Side adjustment (horizontal)

- Adjust the side adjustment screw using a 4 mm (0.157") Allen wrench
- Turn side adjustment screw counterclockwise for increasing the air gap max. 1.5 mm (0.059") on the locking side
- Turn side adjustment screw clockwise for decreasing the air gap max. 1.5 mm (0.059") on the locking side

### Height adjustment (vertical)

- Slightly loosen the two height adjustment screws on all hinges
- Adjust the vertical position of the door
- Retighten the height adjustment screws on all hinges

### Compression adjustment (in/out)

- Slightly loosen the clamping screws
- Align the door to the desired compression
- Retighten the clamping screws

All adjustments can be performed with a 4 mm (0.157") Allen wrench.

## SIMONSWERK

### North America, Inc.

1171 Universal Boulevard  
Whitewater, WI 53190  
U.S.A.

+1 262-472-9500

+1 262-472-0218

[info@simonswerk.com](mailto:info@simonswerk.com)

[www.simonswerk-usa.com](http://www.simonswerk-usa.com)

## MANUFACTURING LOCATION

### Anselmi & C. S.r.l.

Via Ca' Morelli, 19  
31056 Roncade (Treviso)  
Italy

© Anselmi & C. S.r.l., Brochure AN170\_3D\_11/2019, 5 800485 0 00001/2.0  
Anselmi does not accept responsibility for misprints and subsequent specification changes  
although every effort has been made to avoid any errors during preparation of this brochure.

