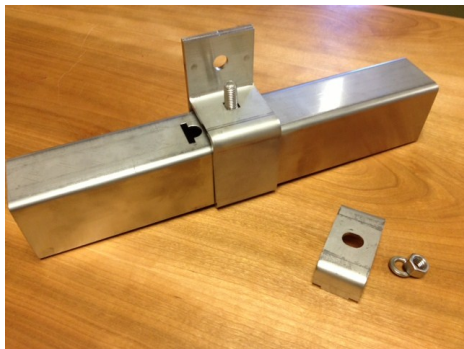


BOX RAIL LOCK JOINT INSTALLATION



Step 1:

Arrange parts. Rail ends (with slots), hanger bracket, and lock joint assembly (includes short bolt, lock washer, and nut)



Step 2:

Slide bolt up through hole in hanger bracket and hold in place. Slide tracks into hanger bracket, allowing bolt head to rest on top of the track.



Step 3:

Place lock joint plate over bolt, allowing tabs to align with slots in track ends.



Step 4:

Thread washer and nut onto bolt,. Tighten securely

REALCRAFT, INC.

9770 44th Ave. NW
Gig Harbor, WA 98332

Tel: (800) 694-5977
Fax: (253) 649-4241

REALCRAFT

This print is the property of
RealCraft Inc.
Updated: October 27, 2020