

# WORTLEY

Textiles since 1953

# TWIST

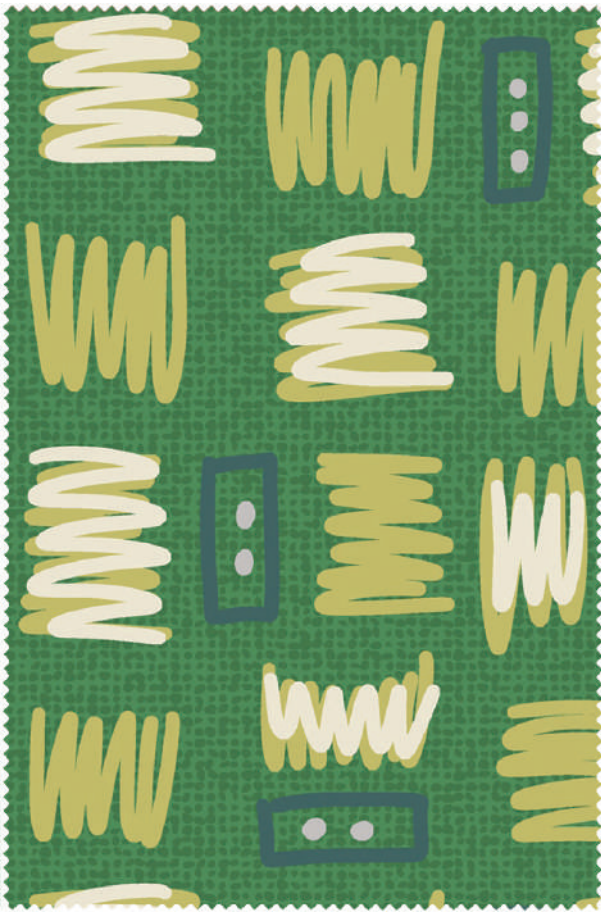


HEAVY COMMERCIAL  
APPLICATIONS

DESIGNED AND PRINTED  
IN AUSTRALIA

MEETS AUSTRALIAN  
AS1530.3 FIRE STANDARDS





TWIST HARLEQUIN



STUDIO ENCORE LEMON TWIST



STUDIO ENCORE CITRONELLE



STUDIO ENCORE GRASS HOPPER



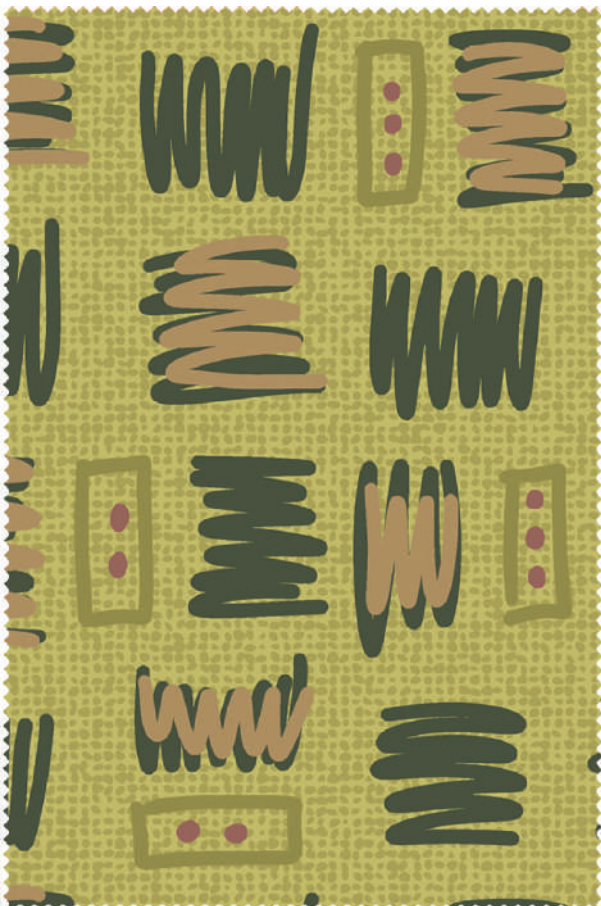
ACCESS MEADOW



STUDIO ENCORE NOUGAT



STUDIO ENCORE CAMEO

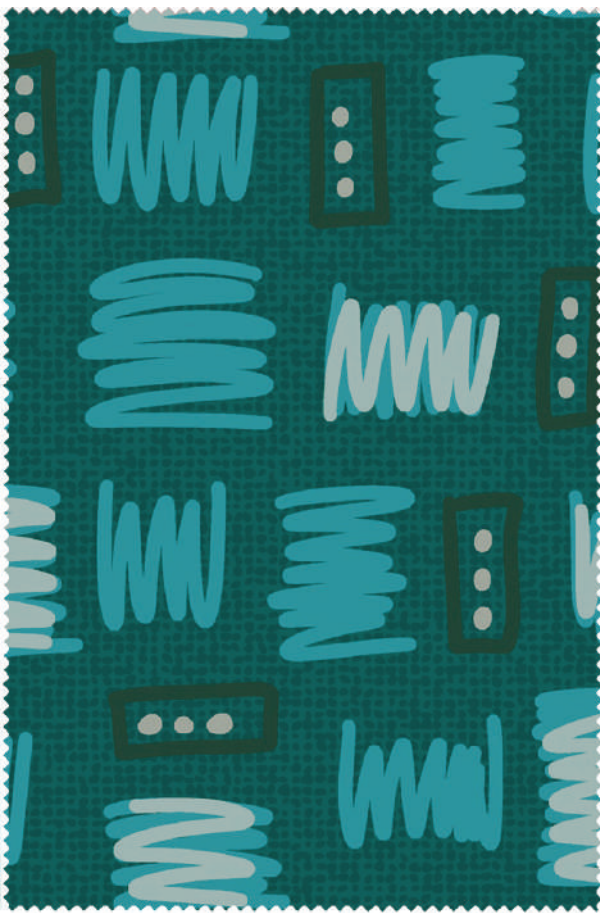


TWIST FOREST



STUDIO ENCORE FOREST





TWIST AQUAMARINE



STUDIO ENCORE PAPRIKA



ACCESS TANGERINE



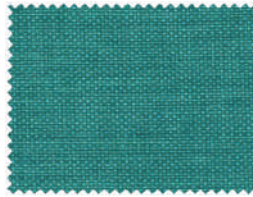
TWIST CIRCUS



STUDIO ENCORE SEAGRASS



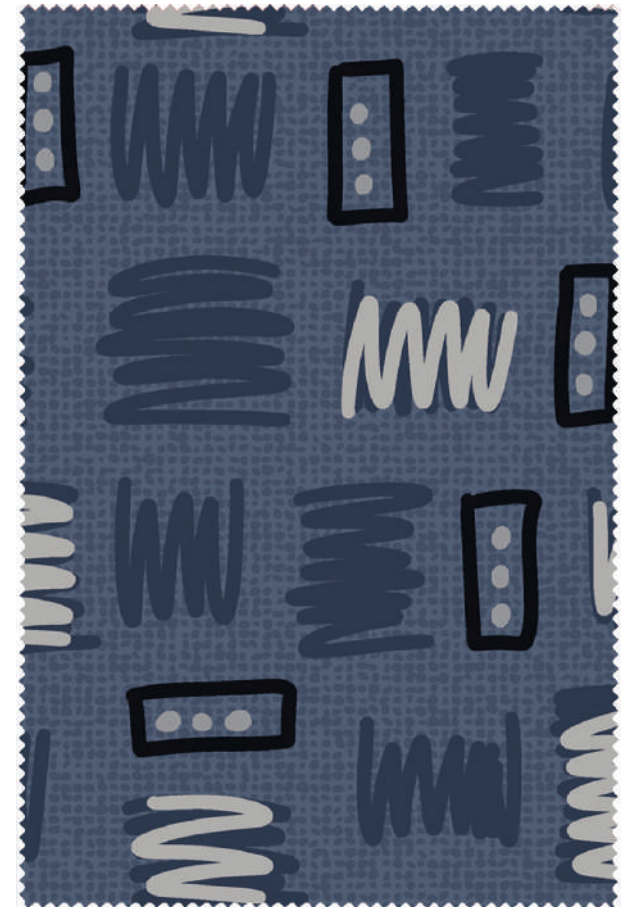
STUDIO ENCORE CARIBBEAN



ACCESS TEAL



STUDIO ENCORE STEEL



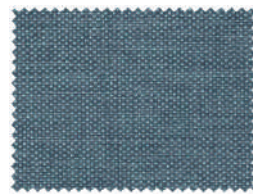
TWIST OXFORD



STUDIO ENCORE WINDSOR



STUDIO ENCORE SMOKE



ACCESS DENIM



ACCESS NAVY





TWIST PLUM



STUDIO ENCORE BLACK



STUDIO ENCORE RUBY



TWIST METEOR



STUDIO ENCORE SAND



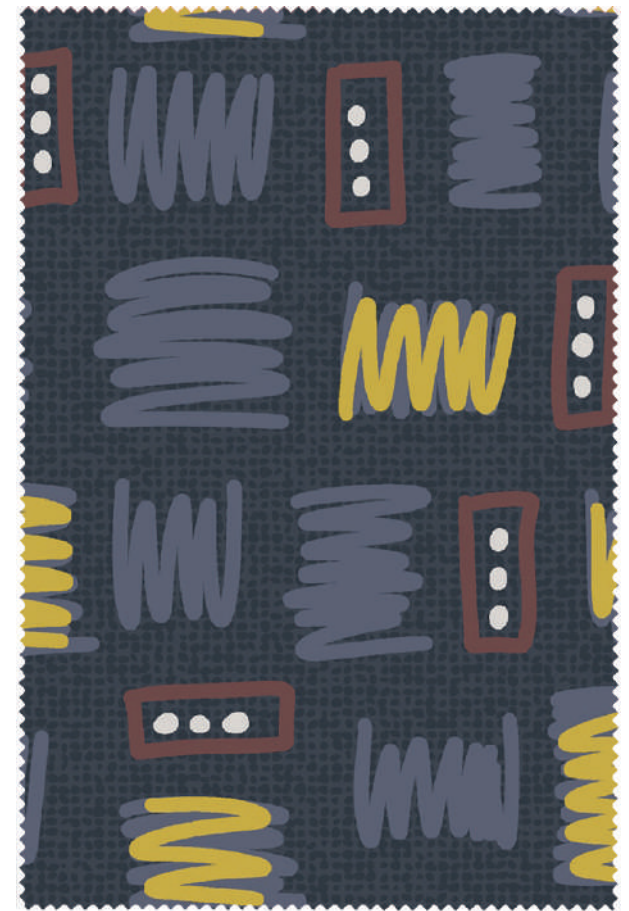
STUDIO ENCORE PLUM



ACCESS PURPLE



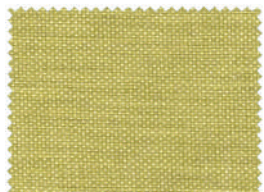
STUDIO ENCORE PORT



TWIST BLUESTONE



STUDIO ENCORE LEMON TWIST



ACCESS CITRUS



ACCESS SAPPHIRE



ACCESS CARBON





TWIST SUNSET



TWIST DESERT



STUDIO ENCORE SORBET



ACCESS TANGERINE



STUDIO ENCORE TANGERINE



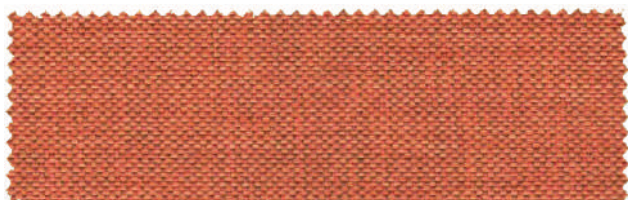
STUDIO ENCORE TOBACCO



STUDIO ENCORE CLAY



STUDIO ENCORE FLAME



ACCESS FIRE



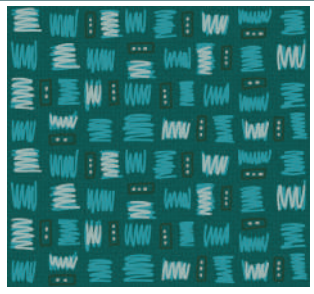
# TWIST

Specification	Twist	Access	Studio Encore
Application	Upholstery - Commercial and Residential	Upholstery - Commercial and Residential	Upholstery - Commercial and Residential
Performance	Greater than 100,000 Rubs	Greater than 175,000 Rubs	Greater than 1 Million Rubs
Composition	100% Polyester	100% Polyester	85% PVC 15% Polyester
Width	Useable 136cm	142cm	137cm
Pattern Repeat	HR: 34cm VR: 31.5cm	Plain	Plain
Railroaded	Sampled Non-Railroaded (Multi-Directional)	Yes	No
Care Label	A	A	C
Stain Resistant Treatments	Contact Us for Treatment Options	Contact Us for Treatment Options	N/A
Fire Rating	AS1530.3	AS1530.3	AS1530.3
Warranty*	3 Years	3 Years	3 Years

\*Conditions apply

## FULL PATTERN REPEATS\*

Free sample cuttings are available from [www.wortleygroup.com.au](http://www.wortleygroup.com.au) or Ph: 1300 36 18 36



TWIST AQUAMARINE



TWIST BLUESTONE



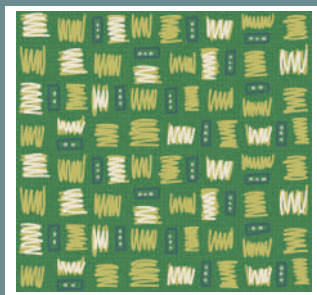
TWIST CIRCUS



TWIST DESERT



TWIST FOREST



TWIST HARLEQUIN



TWIST METEOR



TWIST OXFORD



TWIST PLUM



TWIST SUNSET

\*Pattern has been reduced in these images to show full repeat. Please note that digital images may vary in both colour and texture.



@wortleygroup



Scan QR Code to access further product specifications and information.

**WORTLEY**

Textiles since 1953

HEAD OFFICE: 25 Geddes Street Mulgrave VIC 3170  
Ph: 1300 36 18 36 Email: [sales@wortleygroup.com.au](mailto:sales@wortleygroup.com.au)  
Website: [www.wortleygroup.com.au](http://www.wortleygroup.com.au)