



PAPERBARK CIRCUS



Scan the QR Code with your device to view the Paperbark range and order free sample cuttings.

## SPECIFICATIONS

**Application:** Upholstery - Commercial & Residential

**Performance:** Greater than 100,000 rubs

**Composition:** 100% Polyester

**Print Width:** Useable 136cm

**Pattern Repeat:** HR: 35cm VR: 20cm      **Care Label:** A

**Railroaded:** Sampled Non-Railroaded (Multi-Directional)

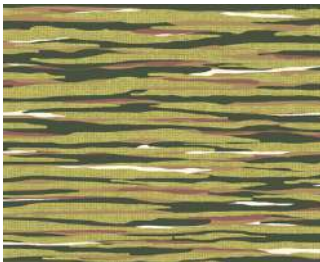
**Fire Rating:** AS1530.3

**Barrier Plus/Stain Resistant Treatable:** Contact Us for Treatment Options

**Warranty\*:** 3 Year  
\*Conditions Apply

**Delivery:** Custom printed against order  
Estimated 7 - 10 day lead time

## COLOURWAYS



PAPERBARK FOREST



PAPERBARK HARLEQUIN



PAPERBARK CIRCUS



PAPERBARK AQUAMARINE



PAPERBARK PLUM



PAPERBARK SUNSET



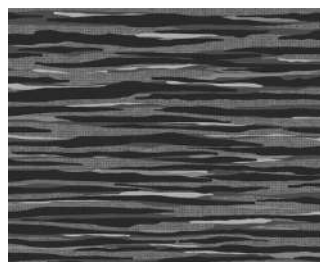
PAPERBARK DESERT



PAPERBARK BLUESTONE



PAPERBARK OXFORD



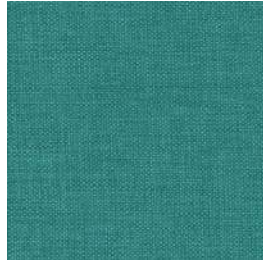
PAPERBARK METEOR

PAPERBARK

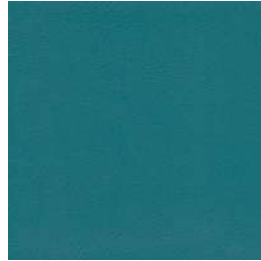
ACCESS FABRIC & STUDIO ENCORE VINYL COORDINATES



PAPERBARK AQUAMARINE



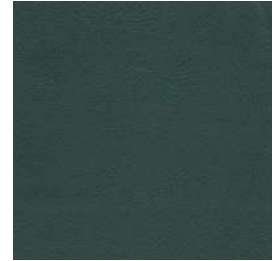
ACCESS TEAL



STUDIO ENCORE  
CARIBBEAN



STUDIO ENCORE  
SEAGRASS



STUDIO ENCORE  
FOREST



PAPERBARK BLUESTONE



ACCESS SAPPHIRE



ACCESS CITRUS



STUDIO ENCORE  
LEMON TWIST



STUDIO ENCORE  
RUBY



PAPERBARK CIRCUS



ACCESS TANGERINE



STUDIO ENCORE  
PAPRIKA



STUDIO ENCORE  
STEEL



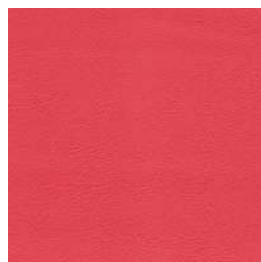
STUDIO ENCORE  
CARIBBEAN



PAPERBARK DESERT



ACCESS FIRE



STUDIO ENCORE  
FLAME



STUDIO ENCORE  
CLAY



STUDIO ENCORE  
NOUGAT



PAPERBARK FOREST



ACCESS MEADOW



STUDIO ENCORE  
CITRONELLE



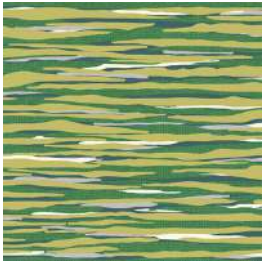
STUDIO ENCORE  
CAMEO



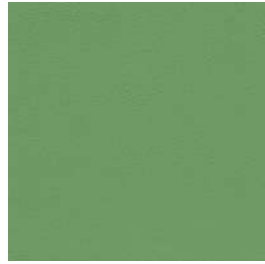
STUDIO ENCORE  
FOREST

PAPERBARK

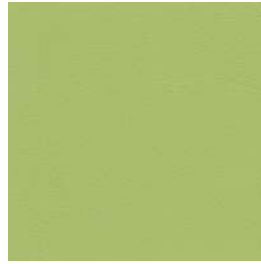
ACCESS FABRIC & STUDIO ENCORE VINYL COORDINATES



PAPERBARK HARLEQUIN



STUDIO ENCORE  
GRASS HOPPER



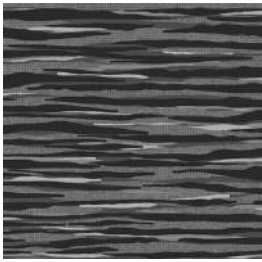
STUDIO ENCORE  
CITRONELLE



STUDIO ENCORE  
LEMON TWIST



ACCESS MEADOW



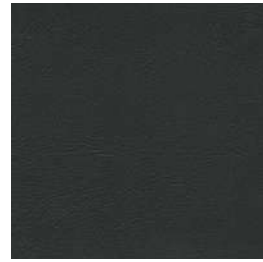
PAPERBARK METEOR



ACCESS CARBON



ACCESS SAPPHIRE



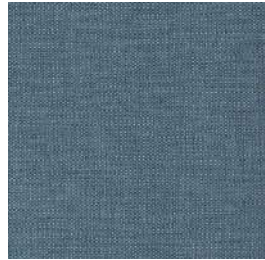
STUDIO ENCORE  
BLACK



STUDIO ENCORE  
PEWTER



PAPERBARK OXFORD



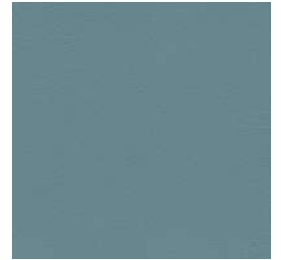
ACCESS DENIM



ACCESS NAVY



STUDIO ENCORE  
WINDSOR



STUDIO ENCORE  
STEEL



PAPERBARK PLUM



ACCESS PURPLE



STUDIO ENCORE  
PLUM



STUDIO ENCORE  
PORT



STUDIO ENCORE  
SAND



PAPERBARK SUNSET



STUDIO ENCORE  
TANGERINE



ACCESS TANGERINE



STUDIO ENCORE  
SORBET



ACCESS NATURAL

## SPECIFICATIONS

### ACCESS FABRIC

**Application:** Heavy Commercial

**Martindale Abrasion:** Greater than 175,000 rubs

**FR Properties AS1530.3:** Ignitability Index: 9, Spread of Flame: 0, Heat Evolved Index: 1, Smoke Developed Index: 4

**Barrier Plus/Stain Resistant Treatable:** Yes

**Composition:** 100% Polyester

**Pattern Repeat:** Plain

**Width:** 142cm

**Care Label:** A

**Railroaded:** Yes

**Warranty\*:** 3 Year

\*Conditions Apply

**Delivery:** In stock ex Melbourne

### STUDIO ENCORE VINYL

**Application:** Heavy Commercial/Healthcare/Marine

**Martindale Abrasion:** Greater than 1 million rubs

**FR Properties AS1530.3:** Smoke Developed Index = 5

**Colourfastness to Light (ISO 105-B02):** 6 - 7

**Composition:** 85% PVC 15% Polyester

**Pattern Repeat:** Plain **Railroaded:** No

**Width/Roll Length:** 137cm/30m

**Care Label:** C

**Warranty\*:** 3 Year

\*Conditions Apply

**Delivery:** In stock ex Melbourne