



SPECIFICATIONS

Application: Upholstery - Commercial & Residential

Performance: Greater than 100,000 rubs

Composition: 100% Polyester

Print Width: Useable 136cm

Pattern Repeat: HR: 35cm VR: 35cm

Care Label: A

Railroaded: Sampled Non-Railroaded (Multi-Directional)

Fire Rating: AS1530.3

Barrier Plus/Stain Resistant Treatable: Contact Us for Treatment Options

Warranty*: 3 Year

*Conditions Apply

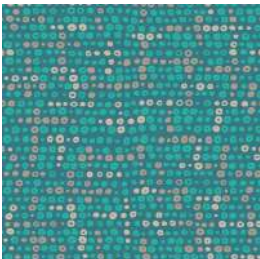
Delivery: Custom printed against order
Estimated 7 - 10 day lead time

COMET TROPICAL

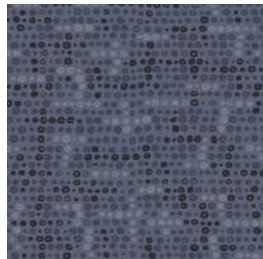


Scan the QR Code with your device to view the Comet range and order free sample cuttings.

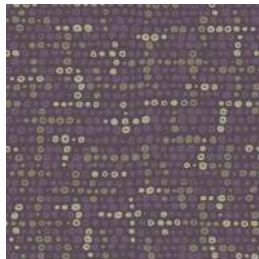
COLOURWAYS



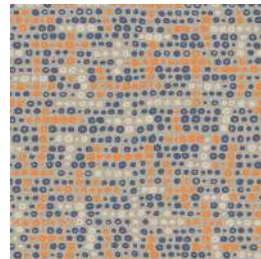
COMET CARIBBEAN



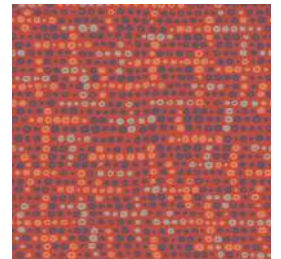
COMET WATERFALL



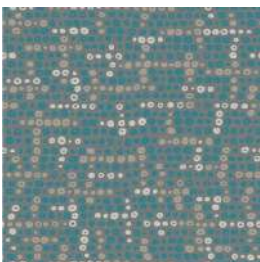
COMET BUBBLEGUM



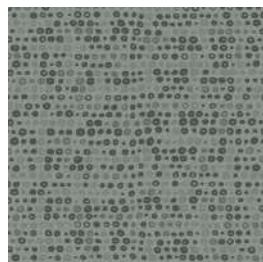
COMET CARNIVAL



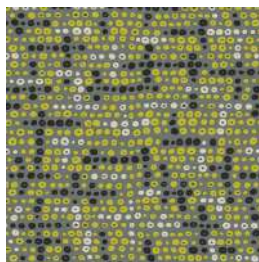
COMET CHILLI PEPPER



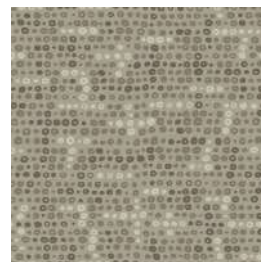
COMET SEASCAPE



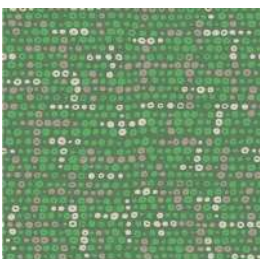
COMET SHALE



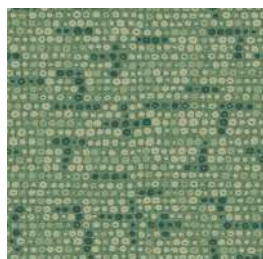
COMET CITRUS



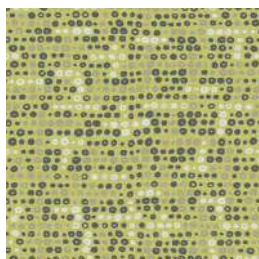
COMET PAMPAS



COMET TROPICAL



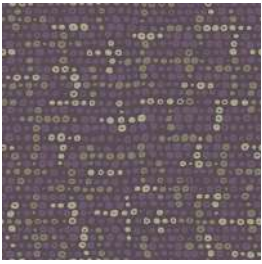
COMET RAINFOREST



COMET WASABI

COMET

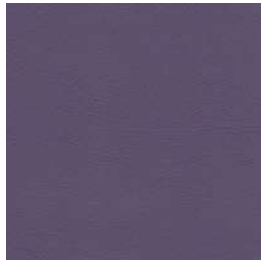
ACCESS FABRIC & STUDIO ENCORE VINYL COORDINATES



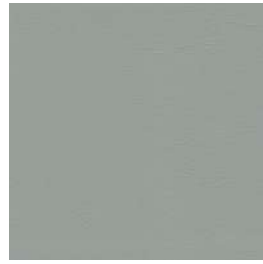
COMET BUBBLEGUM



ACCESS PURPLE



STUDIO ENCORE
PLUM



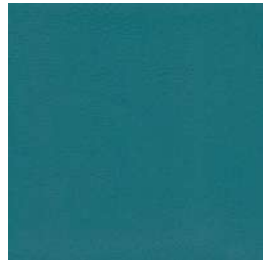
STUDIO ENCORE
SMOKE



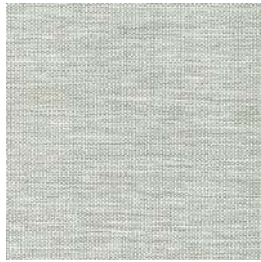
STUDIO ENCORE
CHARCOAL



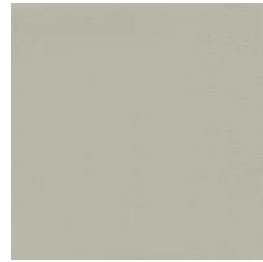
COMET CARIBBEAN



STUDIO ENCORE
CARIBBEAN



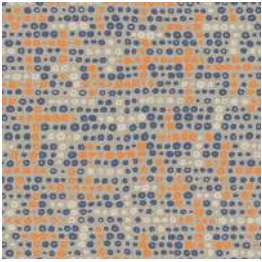
ACCESS NATURAL



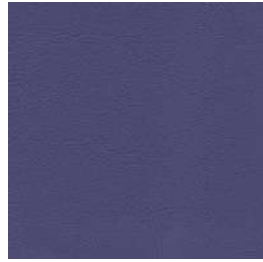
STUDIO ENCORE
SAND



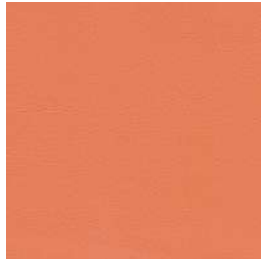
STUDIO ENCORE
CHALK



COMET CARNIVAL



STUDIO ENCORE
REGAL



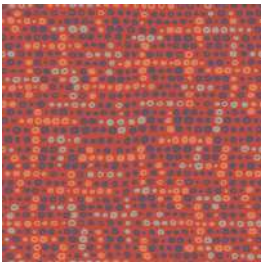
STUDIO ENCORE
TANGERINE



ACCESS TANGERINE



ACCESS NATURAL



COMET CHILLI PEPPER



STUDIO ENCORE
TANGERINE



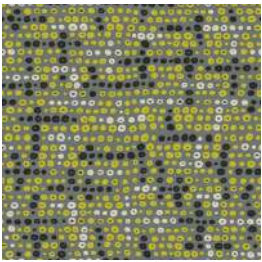
ACCESS FIRE



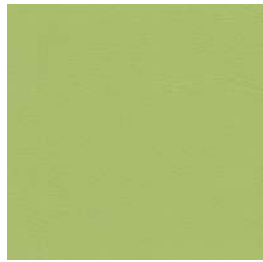
ACCESS DENIM



STUDIO ENCORE
WEDGEWOOD



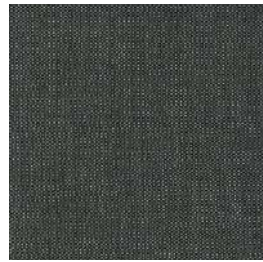
COMET CITRUS



STUDIO ENCORE
CITRONELLE



ACCESS CITRUS



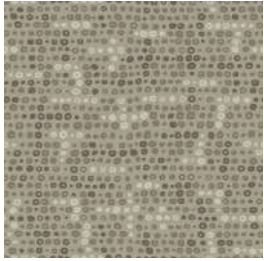
ACCESS FALCON



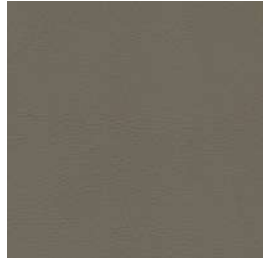
STUDIO ENCORE
PEWTER

COMET

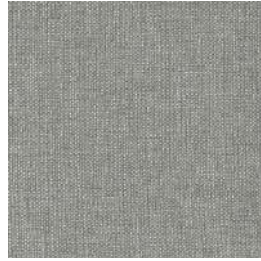
ACCESS FABRIC & STUDIO ENCORE VINYL COORDINATES



COMET PAMPAS



STUDIO ENCORE
BRAZIL



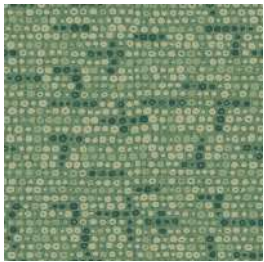
ACCESS LINEN



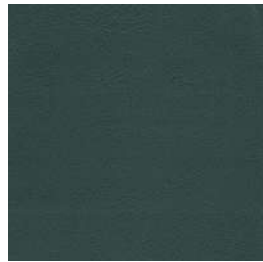
STUDIO ENCORE
CHALK



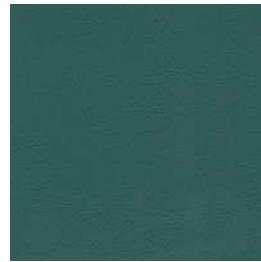
ACCESS NATURAL



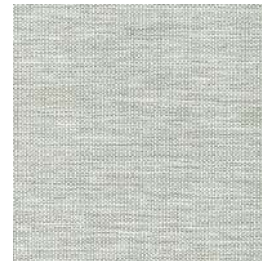
COMET RAINFOREST



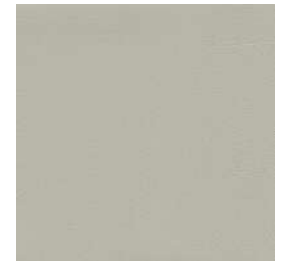
STUDIO ENCORE
FOREST



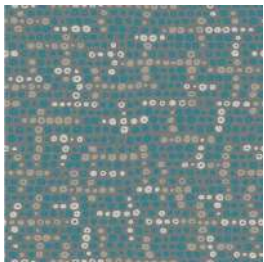
STUDIO ENCORE
SEAGRASS



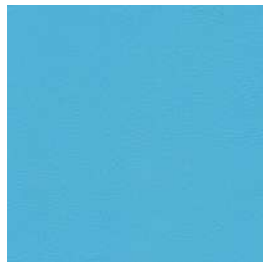
ACCESS NATURAL



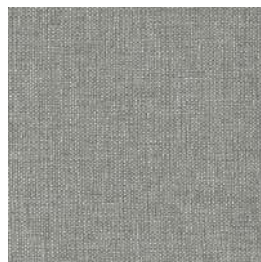
STUDIO ENCORE
SAND



COMET SEASCAPE



STUDIO ENCORE
LAGOON



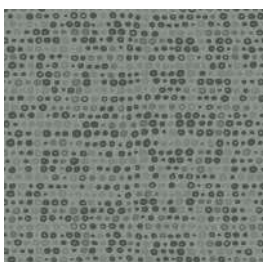
ACCESS LINEN



STUDIO ENCORE
SAND



ACCESS NATURAL



COMET SHALE



STUDIO ENCORE
BLACK



ACCESS FALCON



STUDIO ENCORE
CHARCOAL



STUDIO ENCORE
SMOKE



COMET TROPICAL



STUDIO ENCORE
GRASS HOPPER



STUDIO ENCORE
LILAC



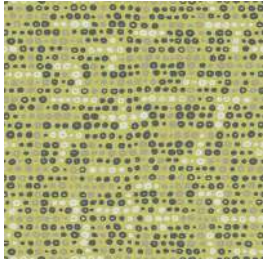
ACCESS NATURAL



ACCESS LINEN

COMET

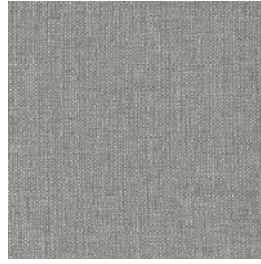
ACCESS FABRIC & STUDIO ENCORE VINYL COORDINATES



COMET WASABI



STUDIO ENCORE CITRONELLE



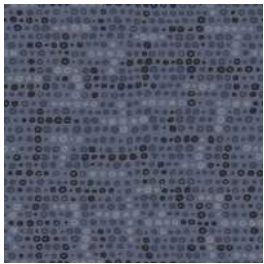
ACCESS LINEN



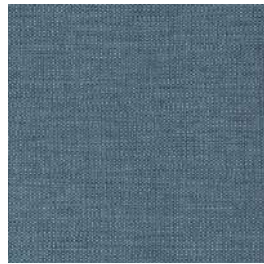
STUDIO ENCORE PEWTER



STUDIO ENCORE CHARCOAL



COMET WATERFALL



ACCESS DENIM



STUDIO ENCORE WEDGEWOOD



ACCESS CARBON



STUDIO ENCORE BLACK

SPECIFICATIONS

ACCESS FABRIC

Application: Heavy Commercial

Martindale Abrasion: Greater than 175,000 rubs

FR Properties AS1530.3: Ignitability Index: 9, Spread of Flame: 0, Heat Evolved Index: 1, Smoke Developed Index: 4

Barrier Plus/Stain Resistant Treatable: Yes

Composition: 100% Polyester

Pattern Repeat: Plain

Width: 142cm

Care Label: A

Railroaded: Yes

Warranty*: 3 Year

*Conditions Apply

Delivery: In stock ex Melbourne

STUDIO ENCORE VINYL

Application: Heavy Commercial/Healthcare/Marine

Martindale Abrasion: Greater than 1 million rubs

FR Properties AS1530.3: Smoke Developed Index = 5

Colourfastness to Light (ISO 105-B02): 6 - 7

Composition: 85% PVC 15% Polyester

Pattern Repeat: Plain **Railroaded:** No

Width/Roll Length: 137cm/30m

Care Label: C

Warranty*: 3 Year

*Conditions Apply

Delivery: In stock ex Melbourne