



TASMAN.
LEATHERS OF
NEW ZEALAND.

SETTLER

LEATHER

SPECIFICATIONS

Application: Residential/ Commercial

Type: Full Grain/Vacuum Dried/Aniline **Finish:** N/A

Thickness: 1.1 - 1.3mm **Origin:** New Zealand

Animal Source: Bovine Cattle Hide

Flammability: AS1530.3 & AS3837

Warranty*: 3 Year
*Conditions Apply

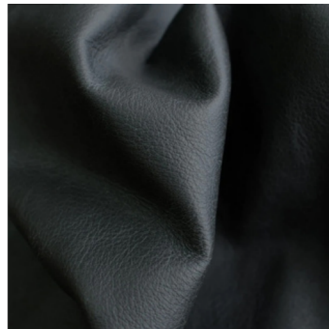


Scan the QR Code with your device
to view the Settler range and
order free sample cuttings.

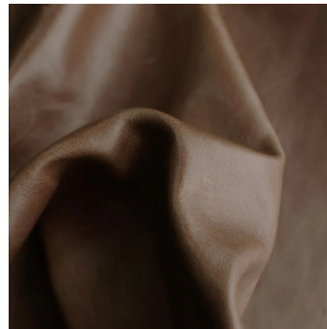
COLOURWAYS



AMBER



BLACK



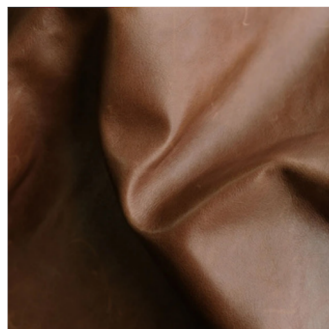
CLOAK



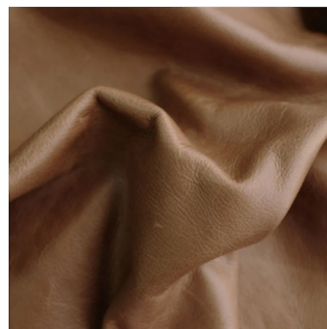
PHANTOM



SERGE



SHANTY



TAPA