

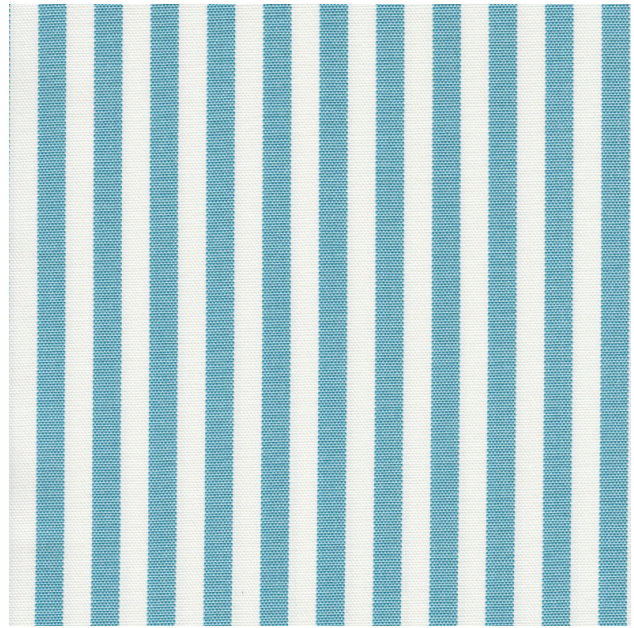


OVERVIEW

Application:	 
Performance:	Outdoor
Composition:	100% Solution Dyed Olefin
Width cm:	140
Weight g/m2:	
Pattern Repeat cm:	H: 1cm V: 0cm
Care Label:	O
Railroaded:	No
Stock Status:	Stocked Item
Warranty:	3 Years



Cannes Caribbean

Woven from solution dyed Olefin yarns, Cannes is highly UV resistant, and features a stain repellent treatment ensuring liquids simply bead off the surface.

Co-ordinates with Monaco and Rossi as part of the St Tropez Collection

TEST RESULTS:

Certificates available via www.wortleygroup.com.au

Martindale Abrasion: AS 2001:2.25 - 1990	N/A
Lightfastness: AS 2001:4.21	N/A
Pilling Resistance: ASTM D3512-2010 (Reapproved 2014)	N/A
Seam Slippage: AS 2001.2.22-2006)	N/A
Fire Rating: AS/NZS 1530.3	N/A

CARE INFORMATION:

Recommended Pelle Care Product : N/A

Ensure your furniture AVOIDS the following conditions :

- * Prolonged exposure to direct sunlight
- * Any heat source (ie radiator or heater)
- * Sharp objects (ie buckles, pet claws, jewelry etc)
- * Common cleaning materials, paints, solvents, nail varnish, dyes and felt pens
- *Perspiration, grime, body oils, hair creams and gels

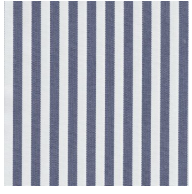
Simple Care Instructions:

- * Rotate reversible cushions regularly
- * Vacuum your furniture regularly with appropriate attachment
- * Do not wet filling or scrub with a stiff brush
- * Remove any excess spills or soil from the surface of the fabric
- * Allow thorough drying before re-use
- * Dry Clean only P30

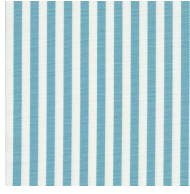
COLOURWAYS - CANNES

Complimentary cuttings available via www.wortleygroup.com.au

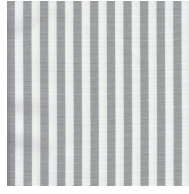
Please Note: Images are a guide only - refer to actual sample for true colour
Pattern is not shown to scale



Atlantic



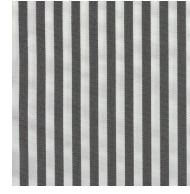
Caribbean



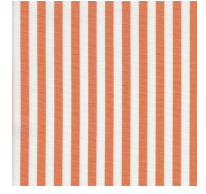
Gris



Meadow





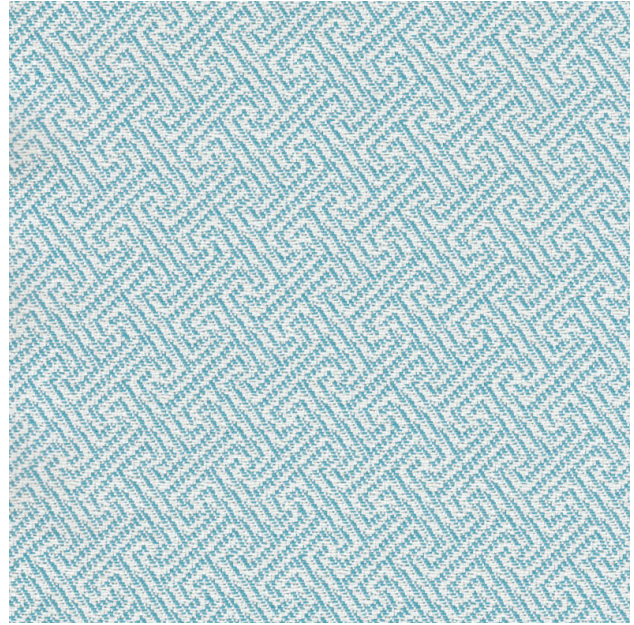
Noir



Tangerine

OVERVIEW

Application:	 
Performance:	Outdoor
Composition:	100% Solution Dyed Olefin
Width cm:	140
Weight g/m2:	
Pattern Repeat cm:	H: 3cm V: 3cm
Care Label:	O
Railroaded:	Multi-Directional
Stock Status:	Stocked Item
Warranty:	3 Years



TEST RESULTS:

Certificates available via www.wortleygroup.com.au

Martindale Abrasion: AS 2001:2.25 - 1990	N/A
Lightfastness: AS 2001:4.21	N/A
Pilling Resistance: ASTM D3512-2010 (Reapproved 2014)	N/A
Seam Slippage: AS 2001.2.22-2006)	N/A
Fire Rating: AS/NZS 1530.3	N/A

Monaco Caribbean

Woven from solution dyed Olefin yarns, Monaco is highly UV resistant, and features a stain repellent treatment ensuring liquids simply bead off the surface.

Co-ordinates with Cannes and Rossi as part of the St Tropez Collection

CARE INFORMATION:

Recommended Pelle Care Product :	N/A
----------------------------------	-----

Ensure your furniture AVOIDS the following conditions :

- * Prolonged exposure to direct sunlight
- * Any heat source (ie radiator or heater)
- * Sharp objects (ie buckles, pet claws, jewelry etc)
- * Common cleaning materials, paints, solvents, nail varnish, dyes and felt pens
- *Perspiration, grime, body oils, hair creams and gels

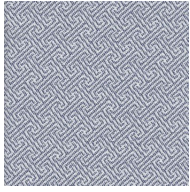
Simple Care Instructions:

- * Rotate reversible cushions regularly
- * Vacuum your furniture regularly with appropriate attachment
- * Do not wet filling or scrub with a stiff brush
- * Remove any excess spills or soil from the surface of the fabric
- * Allow thorough drying before re-use
- * Dry Clean only P30

COLOURWAYS - MONACO

Complimentary cuttings available via www.wortleygroup.com.au

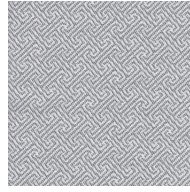
Please Note: Images are a guide only - refer to actual sample for true colour
Pattern is not shown to scale



Atlantic



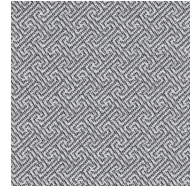
Caribbean



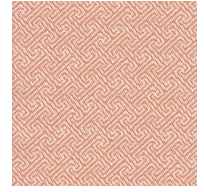
Gris



Meadow





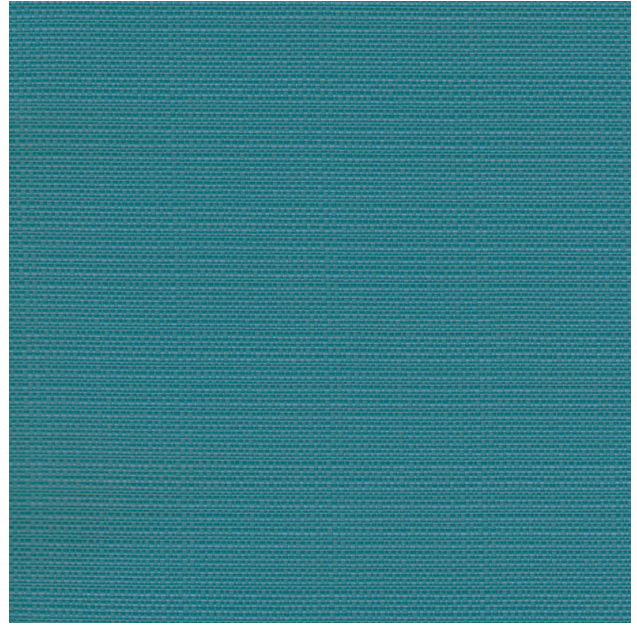
Noir



Tangerine

OVERVIEW

Application:	 
Performance:	Outdoor
Composition:	100% Solution Dyed Olefin
Width cm:	143cm
Weight g/m2:	
Pattern Repeat cm:	Plain
Care Label:	O
Railroaded:	Multi-Directional
Stock Status:	Stocked Item
Warranty:	3 Years



Rossi Caribbean

Woven from solution dyed Olefin yarns, Rossi is highly UV resistant, and features a stain repellent treatment ensuring liquids simply bead off the surface.

Co-ordinates with Cannes and Monaco as part of the St Tropez Collection

TEST RESULTS:

Certificates available via www.wortleygroup.com.au

Martindale Abrasion: AS 2001:2.25 - 1990	N/A
Lightfastness: AS 2001:4.21	N/A
Pilling Resistance: ASTM D3512-2010 (Reapproved 2014)	N/A
Seam Slippage: AS 2001.2.22-2006)	N/A
Fire Rating: AS/NZS 1530.3	N/A

CARE INFORMATION:

Recommended Pelle Care Product :	N/A
----------------------------------	-----

Ensure your furniture AVOIDS the following conditions :	<ul style="list-style-type: none"> * Prolonged exposure to direct sunlight * Any heat source (ie radiator or heater) * Sharp objects (ie buckles, pet claws, jewelry etc) * Common cleaning materials, paints, solvents, nail varnish, dyes and felt pens *Perspiration, grime, body oils, hair creams and gels
---	--

Simple Care Instructions:	<ul style="list-style-type: none"> * Rotate reversible cushions regularly * Vacuum your furniture regularly with appropriate attachment * Do not wet filling or scrub with a stiff brush * Remove any excess spills or soil from the surface of the fabric * Allow thorough drying before re-use * Dry Clean only P30
---------------------------	---

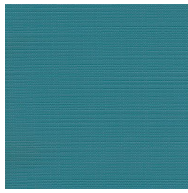
COLOURWAYS - ROSSI

Complimentary cuttings available via www.wortleygroup.com.au

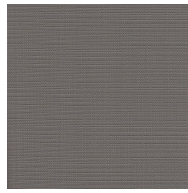
Please Note: Images are a guide only - refer to actual sample for true colour
Pattern is not shown to scale



Atlantic



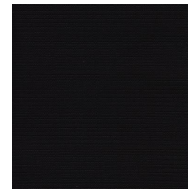
Caribbean



Gris



Meadow



Noir



Tangerine