


OVERVIEW

Application:	
Performance:	Heavy Domestic
Composition:	70% Polyester 20% Viscose 10% Linen
Width cm:	141
Weight g/m2:	
Pattern Repeat cm:	Plain
Care Label:	A
Railroaded:	Multi-Directional
Stock Status:	Stocked Item
Warranty:	3 Years



Maison Blush

TEST RESULTS:

Certificates available via www.wortleygroup.com.au

Martindale Abrasion: AS 2001:2.25 - 1990	Greater than 50,000 rubs
Lightfastness: AS 2001:4.21	N/A
Pilling Resistance: ASTM D3512-2010 (Reapproved 2014)	N/A
Seam Slippage: AS 2001.2.22-2006)	N/A
Fire Rating: AS/NZS 1530.3	N/A

CARE INFORMATION:

Recommended Pelle Care Product : Pelle Fabric Care Master Kit

Ensure your furniture AVOIDS the following conditions :

- * Prolonged exposure to direct sunlight
- * Any heat source (ie radiator or heater)
- * Sharp objects (ie buckles, pet claws, jewelry etc)
- * Common cleaning materials, paints, solvents, nail varnish, dyes and felt pens
- *Perspiration, grime, body oils, hair creams and gels

Simple Care Instructions:

- * Rotate reversible cushions regularly
- * Vacuum your furniture regularly with appropriate attachment
- * Do not wet filling or scrub with a stiff brush
- * Remove any excess spills or soil from the surface of the fabric
- * Allow thorough drying before re-use
- * Dry Clean only P30

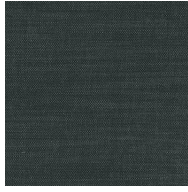
COLOURWAYS - MAISON

Complimentary cuttings available via www.wortleygroup.com.au

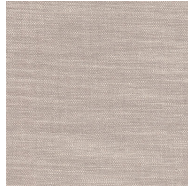
Please Note: Images are a guide only - refer to actual sample for true colour
Pattern is not shown to scale



Aloe



Ash



Blush



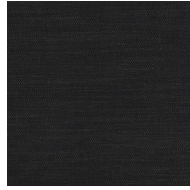
Hale



Mist



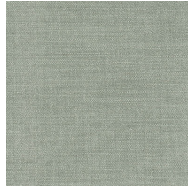
Neptune



Onyx



Opal



Pearl



Pewter



Sisal



Stone