



OVERVIEW

Application:	 
Performance:	Heavy Commercial
Composition:	80% Polyester 20% Cotton
Width cm:	140
Weight g/m2:	
Pattern Repeat cm:	Plain
Care Label:	A
Railroaded:	No
Stock Status:	Stocked Item
Warranty:	3 Years



TEST RESULTS:

Certificates available via www.wortleygroup.com.au

Martindale Abrasion: AS 2001:2.25 - 1990	Greater than 100,000 rubs
Lightfastness: AS 2001:4.21	N/A
Pilling Resistance: ASTM D3512-2010 (Reapproved 2014)	N/A
Seam Slippage: AS 2001.2.22-2006)	N/A
Fire Rating: AS/NZS 1530.3	N/A

CARE INFORMATION:

Recommended Pelle Care Product :	N/A
-------------------------------------	-----

Ensure your furniture AVOIDS the following conditions :	<ul style="list-style-type: none"> * Prolonged exposure to direct sunlight * Any heat source (ie radiator or heater) * Sharp objects (ie buckles, pet claws, jewelry etc) * Common cleaning materials, paints, solvents, nail varnish, dyes and felt pens *Perspiration, grime, body oils, hair creams and gels
--	--

Simple Care Instructions:	<ul style="list-style-type: none"> * Rotate reversible cushions regularly * Vacuum your furniture regularly with appropriate attachment * Do not wet filling or scrub with a stiff brush * Remove any excess spills or soil from the surface of the fabric * Allow thorough drying before re-use * Dry Clean only P30
---------------------------	---

COLOURWAYS - MADISON

Complimentary cuttings available via www.wortleygroup.com.au

Please Note: Images are a guide only - refer to actual sample for true colour
Pattern is not shown to scale



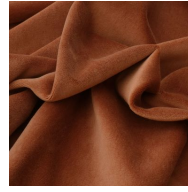
Blush



Cashew



Charcoal



Cinnamon



Damson



Dove



Ginger



Gunmetal



Indigo



Kingfisher



Lagoon



Moss



Neptune



Opal



Otter



Raison



Sage



Silver



Slate



Sunflower