

CASTLE POOL

SPECIFICATIONS

Composition: 100% Polyester

Usage: Heavy Commercial - Health/Hospitality

HR: 0cm **VR:** 0cm

Width: 137cm

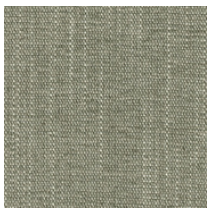
Care Label: E

AS1530.3 Flammability: Yes - Smoke Developed Index: 5

Available Colours: 15



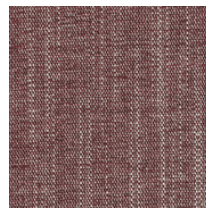
COLOURWAYS



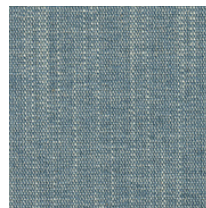
CARGO



CHARCOAL



CRIMSON



DENIM



FERN



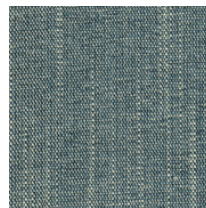
FLAX



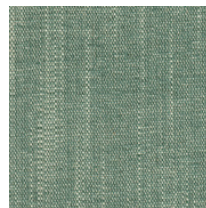
GOLDEN



HEMP



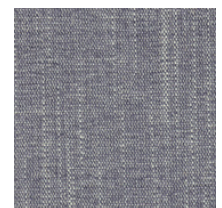
INDIGO



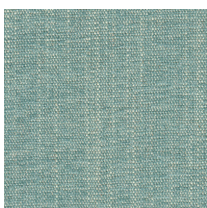
MEADOW



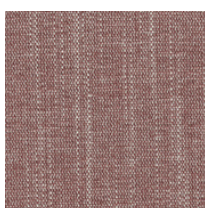
NATURAL



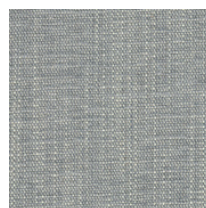
ORCHID



POOL



POPPY



STONE



WORTLEY
Furnishing in Style

Scan the QR Code with your device to view the Castle Collection and order free sample cuttings.

A patented performance fabric, Crypton Fabric is perfect for demanding environments. Providing heavy-duty unparalleled liquid, stain and odour resistance plus an imprenetrable barrier, Crypton allows products to stay beautiful and last longer.

All Crypton fabrics endure rigorous performance testing and must meet or exceed the minimum standards list below.

PERFORMANCE FEATURES AND SPECIFICATIONS

Fiber Content:	100% Polyester		
Width:	54" (1370mm)		
Warranty:	3 Year		
Repellency:	Spray Rating Aqueous Liquid Repellency: Water/Alcohol Solution Resistance Oil Repellency: Hydrocarbon Resistance	AATCC 22 AATCC 193 AATCC118	A80-100 of 100 max 6 ± 1 6 ± 1
Cleanibility:	Spot-Cleaning/Stain Resistance: With Water and Mild Detergent (1% Dishwashing liquid or Laundry Detergent) Durable to a variety of pH-Neutral Cleaners and Disinfectants Do not use Solvent Cleaners		4 - 5 of 5 Max 4 - 5 of 5 Max
Moisture Barrier:	Hydrostatic Resistance	AATCC127	≥100 cm
Odor-Resistant Silver Ion Technology:	Fabric is Protected from Odors and Microbial Damage Bacteria Resistance Fungal Growth Resistance	ISO 20743 AATCC30	95% ± 5% 95% ± 5%
Abrasion & Pilling Resistance:	Oscillatory Cylinder Method Martindale Abrasion Martindale Pilling	ASTM D 4157 (cotton duck) ASTM D 4966/ISO 12947-2 ASTM D4970 ISO 12945-2 (415g)	≥ 50k Double Rubs ≥ 40k Cycles ≥ Class 3 ≥ Class 3
Colorfastness to Light:	Xenon Arc Lamp Method	AATCC 16 Option 1 or 3 ISO 105-B02	≥ Class 4 at 40 hrs ≥ Class 4 at 40 hrs
Flammability:	Methods for Fire Tests on Building Materials Component and Structure: Part 3: Simultaneous Determination of Ignitability, Flame Propagation, Heat Release and Smoke Release	AS/NZS 1530.3-1999	Smoke Developed Index: 5
Environmental:	Third-Party Tested for VOCs - Compliant to California Section 01350 GREENGUARD Gold Certified Free of Potentially Harmful Levels of PFOS, PFOA, Formaldehyde, Heavy Metals, Phenols, Phthalates, Odor and Skin Sensitizers - No Additional FRs (International FR requirements can be met upon request) Can Be Recycled CA Prop 65-Compliant Crypton Inc.'s Manufacturing and Raw Materials are SCS Validated to NSF 336		

Exclusively Distributed by

WORTLEY
Furnishing in Style