


OVERVIEW

Application:	
Performance:	Heavy Domestic
Composition:	100% Polyester
Width cm:	142
Weight g/m2:	
Pattern Repeat cm:	Plain
Care Label:	A
Railroaded:	No
Stock Status:	Stocked Item
Warranty:	3 Years



Boston Driftwood

TEST RESULTS:

Certificates available via www.wortleygroup.com.au

Martindale Abrasion: AS 2001:2.25 - 1990	Greater than 40,000 Rubs
Lightfastness: AS 2001:4.21	5
Pilling Resistance: ASTM D3512-2010 (Reapproved 2014)	4 - 5
Seam Slippage: AS 2001.2.22-2006)	Warp: 1.3mm (Max 6) Weft: 1.1mm (Max 6)
Fire Rating: AS/NZS 1530.3	N/A

CARE INFORMATION:

Recommended Pelle Care Product : Pelle Fabric Care Master Kit

Ensure your furniture AVOIDS the following conditions :

- * Prolonged exposure to direct sunlight
- * Any heat source (ie radiator or heater)
- * Sharp objects (ie buckles, pet claws, jewelry etc)
- * Common cleaning materials, paints, solvents, nail varnish, dyes and felt pens
- *Perspiration, grime, body oils, hair creams and gels

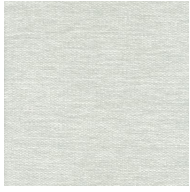
Simple Care Instructions:

- * Rotate reversible cushions regularly
- * Vacuum your furniture regularly with appropriate attachment
- * Do not wet filling or scrub with a stiff brush
- * Remove any excess spills or soil from the surface of the fabric
- * Allow thorough drying before re-use
- * Dry Clean only P30

COLOURWAYS - BOSTON

Complimentary cuttings available via www.wortleygroup.com.au

Please Note: Images are a guide only - refer to actual sample for true colour
Pattern is not shown to scale



Boston Cloud



Boston Dove



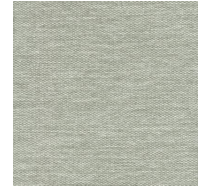
Boston Driftwood



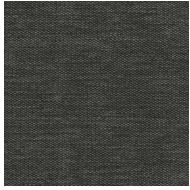
Boston Fog



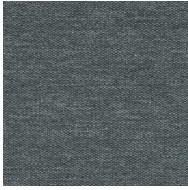
Boston Glacier



Boston Linen



Boston Meteor



Boston Nickel



Boston Shell



Boston Steel