



**SPECIFICATIONS**

**Application:**  

**Performance:** Heavy Commercial

**Martindale Abrasion:** Greater than 100,000 rubs

**Barrier Plus Treatment (including a Fire Retardant Additive):** Yes

**Composition:** 100% Polyester

**Pattern Repeat:** Plain

**Width:** 144cm

**Care Label:** P

**Railroaded:** Multi-Directional

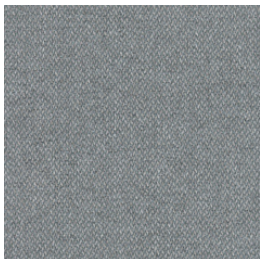
**Warranty\*:** 3 Year

\*Conditions Apply

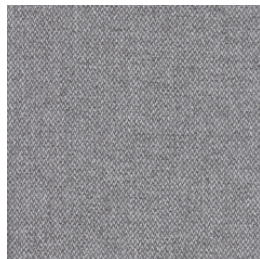


Scan the QR Code with your device to view the Blockade range and order free sample cuttings.

**COLOURWAYS**



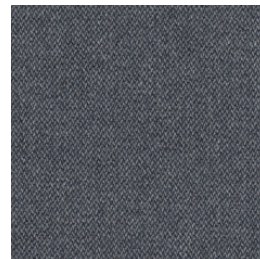
CLOUD



DOVE



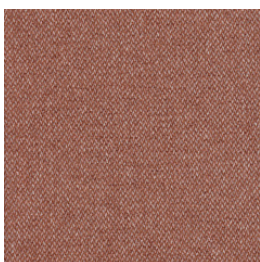
OATMEAL



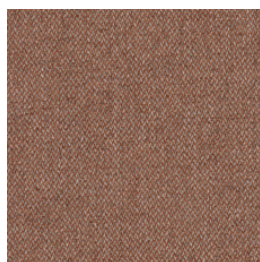
OCEAN



RAVEN



ROSEWOOD



RUSSET



SILVER