




SPECIFICATIONS

Application:  

Performance: Commercial

Martindale Abrasion: Greater than 100,000 rubs

FR Properties AS1530.3: Ignitability Index: 11, Spread of Flame: 0, Heat Evolved Index: 2, Smoke Developed Index: 3

Barrier Plus/Stain Resistant Treatable: Yes

Oeko-Tex Certified: Yes

Composition: 100% Polyester

Pattern Repeat: Plain

Width: 144cm

Care Label: A

Railroaded: Multi-Directional

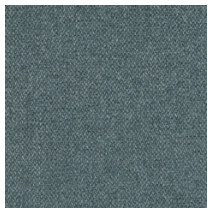
Warranty*: 3 Year

*Conditions Apply



Scan the QR Code with your device to view the Belgrave range and order free sample cuttings.

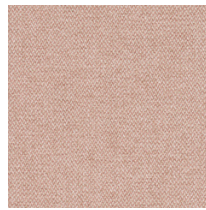
COLOURWAYS



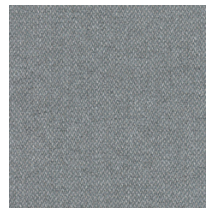
AEGEAN



BEAVER



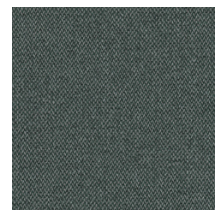
BLUSH



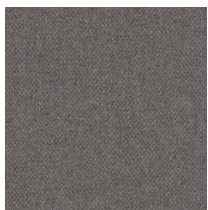
CLOUD



DOVE



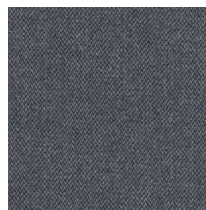
JADE



NICKEL



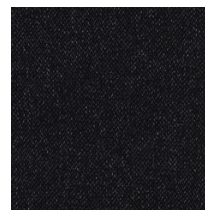
OATMEAL



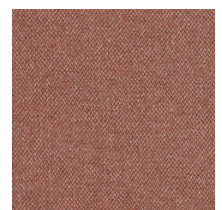
OCEAN



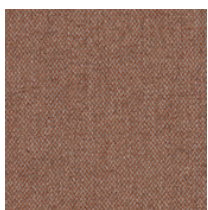
PEARL



RAVEN



ROSEWOOD



RUSSET



SILVER



TEAL