



## SPECIFICATIONS

**Application:** Heavy Commercial/Healthcare/Marine

**Martindale Abrasion:** Greater than 50,000 rubs

**FR Properties AS1530.3:** Smoke Developed Index = 5

**Colourfastness to Light (ISO 105-B02):** 6 - 7

**Composition:** 85% PVC 15% Polyester

**Pattern Repeat:** Plain **Railroaded:** No

**Width/Roll Length:** 137cm/30m

**Care Label:** C

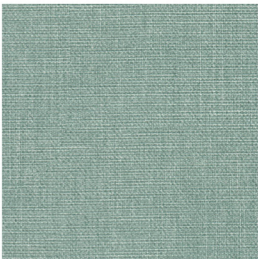
**Warranty\*:** 3 Year

\*Conditions Apply

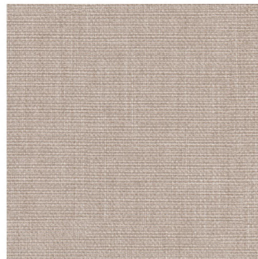


Scan the QR Code with your device to view the Tessuto range and order free sample cuttings.

## COLOURWAYS



AQUA



ARENA



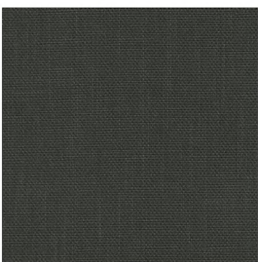
ASINO



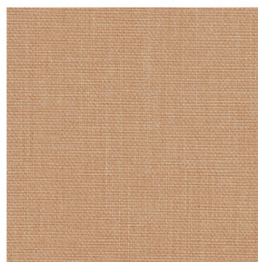
BLU



CAPPUCINO



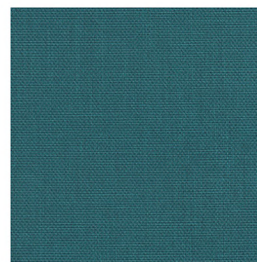
CARBONE



CASTANO



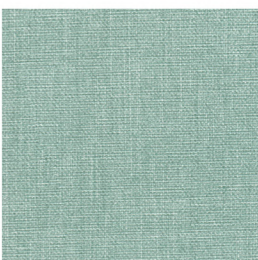
CHIELO



CORSICA



CREMA



FRESCO



GESSO



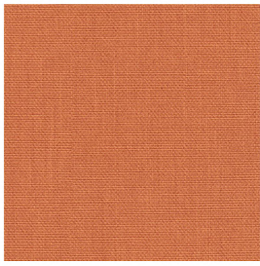
GRAPPA



GRIGIO



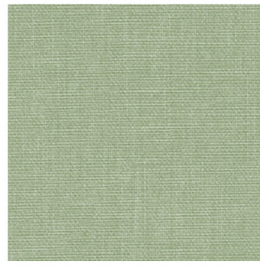
LIDO



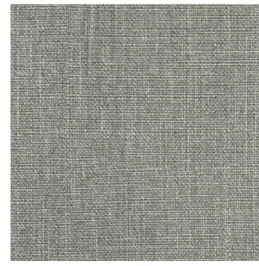
MANDARIN



MARINA



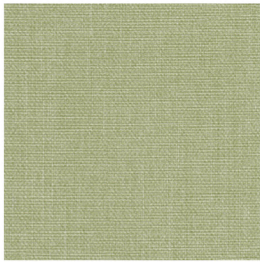
MENTA



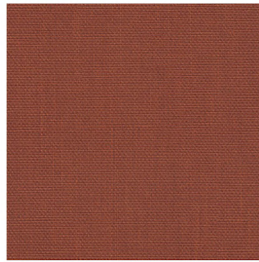
MONTANA



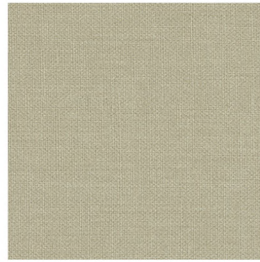
OLIVE



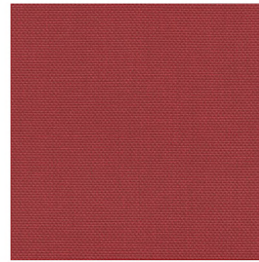
PESTO



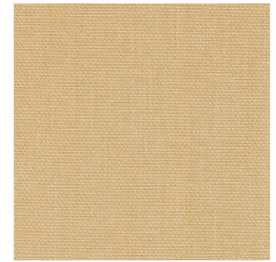
RUSTICA



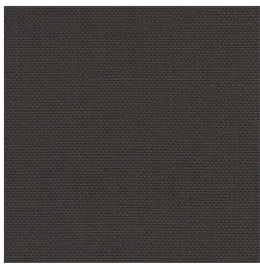
SABBIA



SALSA



SOLE



STRETTO



TELA



VERDE



VOLPE



ZUCCHINI



Scan the QR Code with your device  
to view the Tessuto range and  
order free sample cuttings.

**SPECIFICATIONS**

<b>Application</b>	Heavy Commercial, Healthcare, Hospitality & Marine Upholstery
<b>Abrasion Resistance</b>	Test method AS 2001.2.25 (12kPa) Martindale Method No significant wear after 50,000+ Rubs
<b>Anti Microbial &amp; Anti Bacterial</b>	Sanitised to inhibit growth of Mould and Bacteria
<b>Composition</b>	85% PVC 15% Polyester Gauge: 1.4mm Roll Length: 30m Roll Width 137cm
<b>Colour Fastness to Light</b>	UV Stabilised and suitable for indoor/outdoor use. Light Fastness rating 6-7 ISO 105-B02-1994 (Grey Scale 1-5)
<b>Colour Fastness to Bleach</b>	Tested to Australian Standards (AS2001.4) No change of colour rating 4-5
<b>Meets FR Standards for use in Commercial Areas:</b>	FR Properties: Tested to Australian Standards( AS1530.3) Spread of Flame: 0 Smoke Developed: 5, IMO Standards A. 652(16) AS/NZS 3837
<b>Reach Certification</b>	Compliant with the EU Reach regulation (EC) No 1907/2006 The Reach Certification restricts the use of harmful chemicals that potentially have an impact on both human health & the environment. Qantum is Phthalate Free. No Formaldehyde, Lead, Mercury or Chromium used in the manufacturing process.
<b>Protech</b>	A protective top surface allowing easy removal of stains and dirt
<b>Care &amp; Cleaning</b>	Most stains can be cleaned using warm soapy water, followed by clean water rinsing. Moderate scrubbing with a medium bristle brush will help loosen soiling from the embossed surface. Failure to follow cleaning instructions may permanently stain and reduce the life of the vinyl.