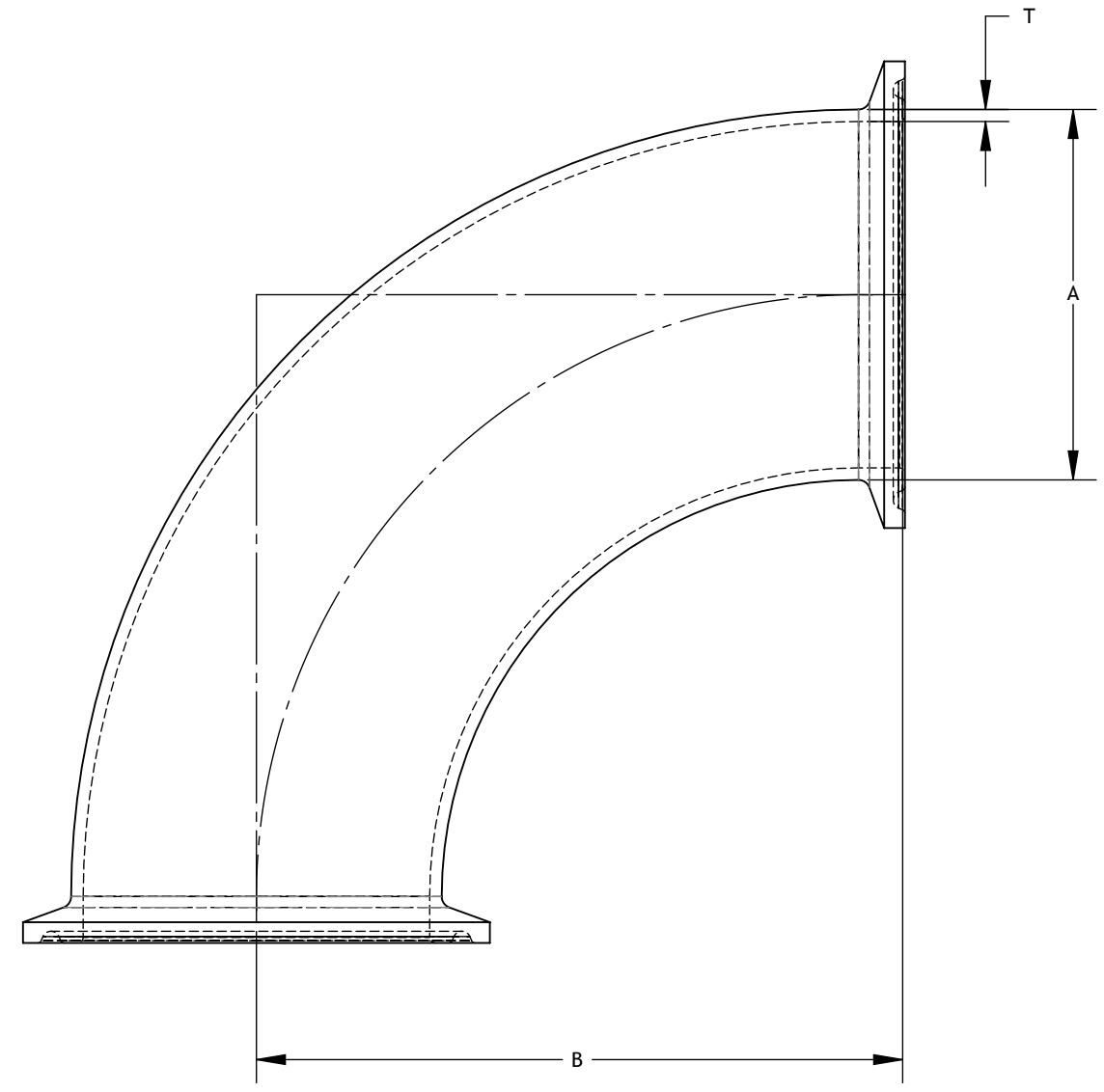
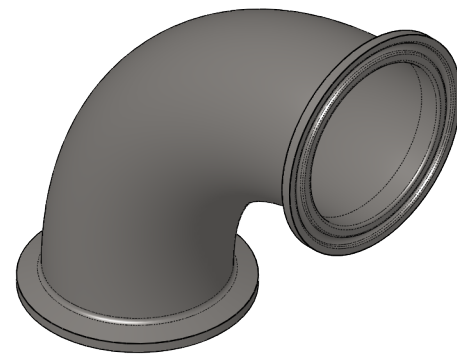


NOTES CONTINUED:



SKU	Part	Material	A		B		T	
			Inch	mm	Inch	mm	Inch	mm
2CMP G0100	0710.0211.4010	304	1	25.4	2	50.8	0.065	1.651
2CMP G0150	0710.0211.4015	304	1.5	38.1	2.75	69.9	0.065	1.651
2CMP G0200	0710.0211.4020	304	2	50.8	3.5	88.9	0.065	1.651
2CMP G0250	0710.0211.4025	304	2.5	63.5	4.25	108.0	0.065	1.651
2CMP G0300	0710.0211.4030	304	3	76.2	5	127.0	0.065	1.651
2CMP G0400	0710.0211.4040	304	4	101.6	6.63	168.3	0.083	2.108
2CMP G0600	0710.0211.4060	304	6	152.4	10.5	266.7	0.109	2.769
2CMP R0100	0710.0211.6010	316L	1	25.4	2	50.8	0.065	1.651
2CMP R0150	0710.0211.6015	316L	1.5	38.1	2.75	69.9	0.065	1.651
2CMP R0200	0710.0211.6020	316L	2	50.8	3.5	88.9	0.065	1.651
2CMP R0250	0710.0211.6025	316L	2.5	63.5	4.25	108.0	0.065	1.651
2CMP R0300	0710.0211.6030	316L	3	76.2	5	127.0	0.065	1.651
2CMP R0400	0710.0211.6040	316L	4	101.6	6.63	168.3	0.083	2.108
2CMP R0600	0710.0211.6060	316L	6	152.4	10.5	266.7	0.109	2.769

0710_0211-2CMP 90 DEGREE CLAMP ELBOW, PART PDM REV: 1.0

PROPRIETARY AND CONFIDENTIAL
 THE INFORMATION CONTAINED IN THIS DRAWING IS THE SOLE PROPERTY OF CRAFT KETTLE BREWING EQUIPMENT. ANY REPRODUCTION IN PART OR AS A WHOLE WITHOUT THE WRITTEN PERMISSION OF CRAFT KETTLE BREWING EQUIPMENT IS PROHIBITED.

NOTES AND TOLERANCES: (UNLESS OTHERWISE SPECIFIED)
 1. INTERPRET DRAWING PER ASME Y14.5-1994.
 2. REMOVE ALL SHARP EDGES.
 3. DO NOT SCALE FROM DRAWING.

DIMENSIONS ARE IN MM [INCHES]
 TOLERANCES:
 .X ±
 .XX ±
 ANGULAR ± °



MATERIAL: - FINISH: 0.8 μm NEXT ASSY

REV.	DATE	DESCRIPTION	ZONE
-	-	-	-

PART NAME: **90 DEG. CLAMP ELBOW | 3A (2CMP)**

DESIGNER	B. MOORE	06/12/2018	DWG. NO.	0710.0211	REV.	1.0
DRAFTER	B. MOORE	06/12/2018				
CHECKER						
APPROVAL						

SIZE: B SCALE: 1:1 PROJECTION: SHEET: 1 OF 15