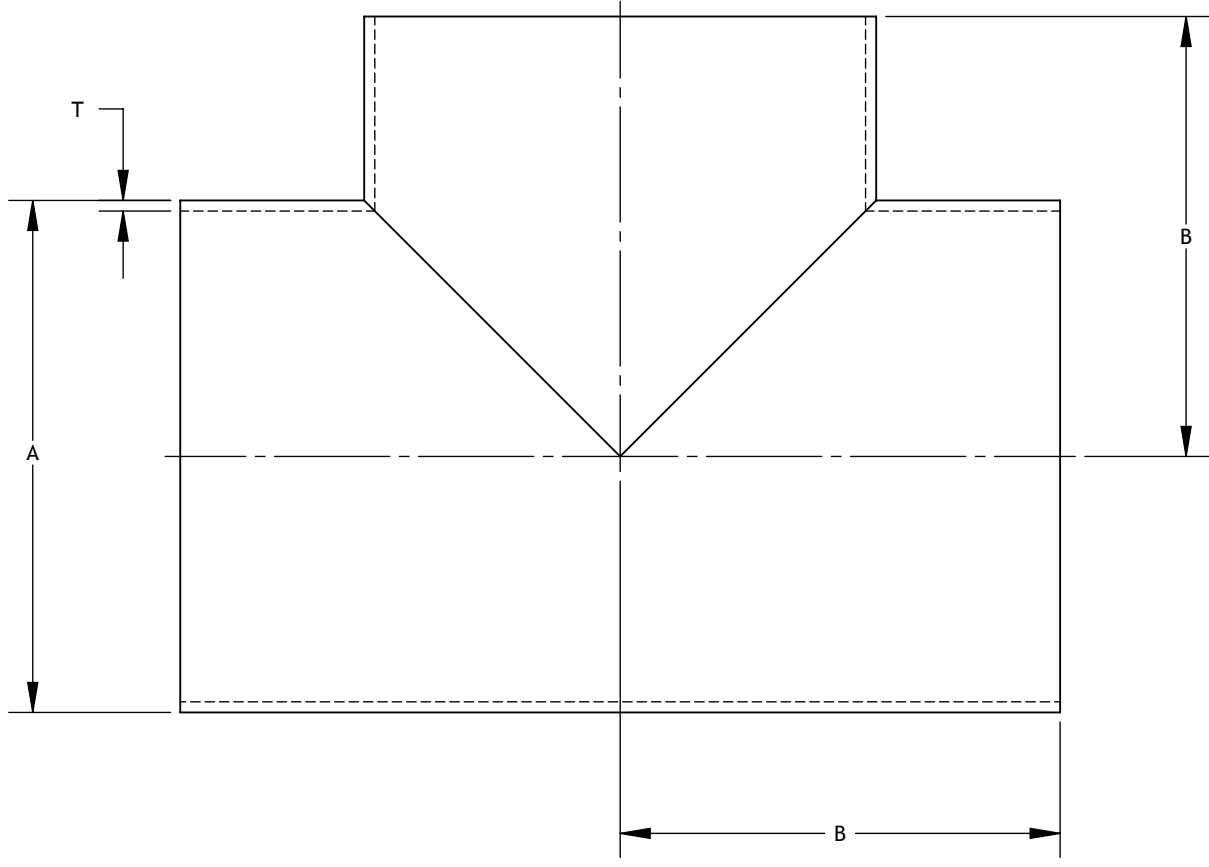


NOTES CONTINUED:

SKU	Part no.	Material	A		B		T	
			Inch	mm	Inch	mm	Inch	mm
L7W G0100	0710.0752.4010	304	1	25.4	1.13	28.6	0.065	1.65
L7W G0150	0710.0752.4015	304	1.5	38.1	1.66	42.1	0.065	1.65
L7W G0200	0710.0752.4020	304	2	50.8	2.06	52.4	0.065	1.65
L7W G0250	0710.0752.4025	304	2.5	63.5	2.34	59.5	0.065	1.65
L7W G0300	0710.0752.4030	304	3	76.2	2.59	65.9	0.065	1.65
L7W G0400	0710.0752.4040	304	4	101.6	3.44	87.3	0.083	2.11
L7W R0100	0710.0752.6010	316L	1	25.4	1.13	28.6	0.065	1.65
L7W R0150	0710.0752.6015	316L	1.5	38.1	1.66	42.1	0.065	1.65
L7W R0200	0710.0752.6020	316L	2	50.8	2.06	52.4	0.065	1.65
L7W R0250	0710.0752.6025	316L	2.5	63.5	2.34	59.5	0.065	1.65
L7W R0300	0710.0752.6030	316L	3	76.2	2.59	65.9	0.065	1.65
L7W R0400	0710.0752.6040	316L	4	101.6	3.44	87.3	0.083	2.11



0710\_0752 7WWW WELD SHORT EQUAL TEE, PART PDM REV: 1.0

**PROPRIETARY AND CONFIDENTIAL**  
 THE INFORMATION CONTAINED IN THIS DRAWING IS THE SOLE PROPERTY OF CRAFT KETTLE BREWING EQUIPMENT. ANY REPRODUCTION IN PART OR AS A WHOLE WITHOUT THE WRITTEN PERMISSION OF CRAFT KETTLE BREWING EQUIPMENT IS PROHIBITED.

**NOTES AND TOLERANCES: (UNLESS OTHERWISE SPECIFIED)**  
 DIMENSIONS ARE IN MM [INCHES]  
 TOLERANCES:  
 .X ±  
 .XX ±  
 ANGULAR ± °

1. INTERPRET DRAWING PER ASME Y14.5-1994.  
 2. REMOVE ALL SHARP EDGES.  
 3. DO NOT SCALE FROM DRAWING.

**CRAFT KETTLE**  
 BREWING EQUIPMENT

MATERIAL: - FINISH: 0.8 μm NEXT ASSY: -

REV.	DATE	DESCRIPTION	ZONE
-	-	-	-

PART NAME: **EQUAL SHORT WELD TEE | 3A (L7W)**

DESIGNER	B. MOORE	6/21/2018	DWG. NO.	REV.
DRAFTER	B. MOORE	6/21/2018	0710.0752	1.0
CHECKER				
APPROVAL				

SIZE: B SCALE: 2:3 PROJECTION: SHEET: 1 OF 13