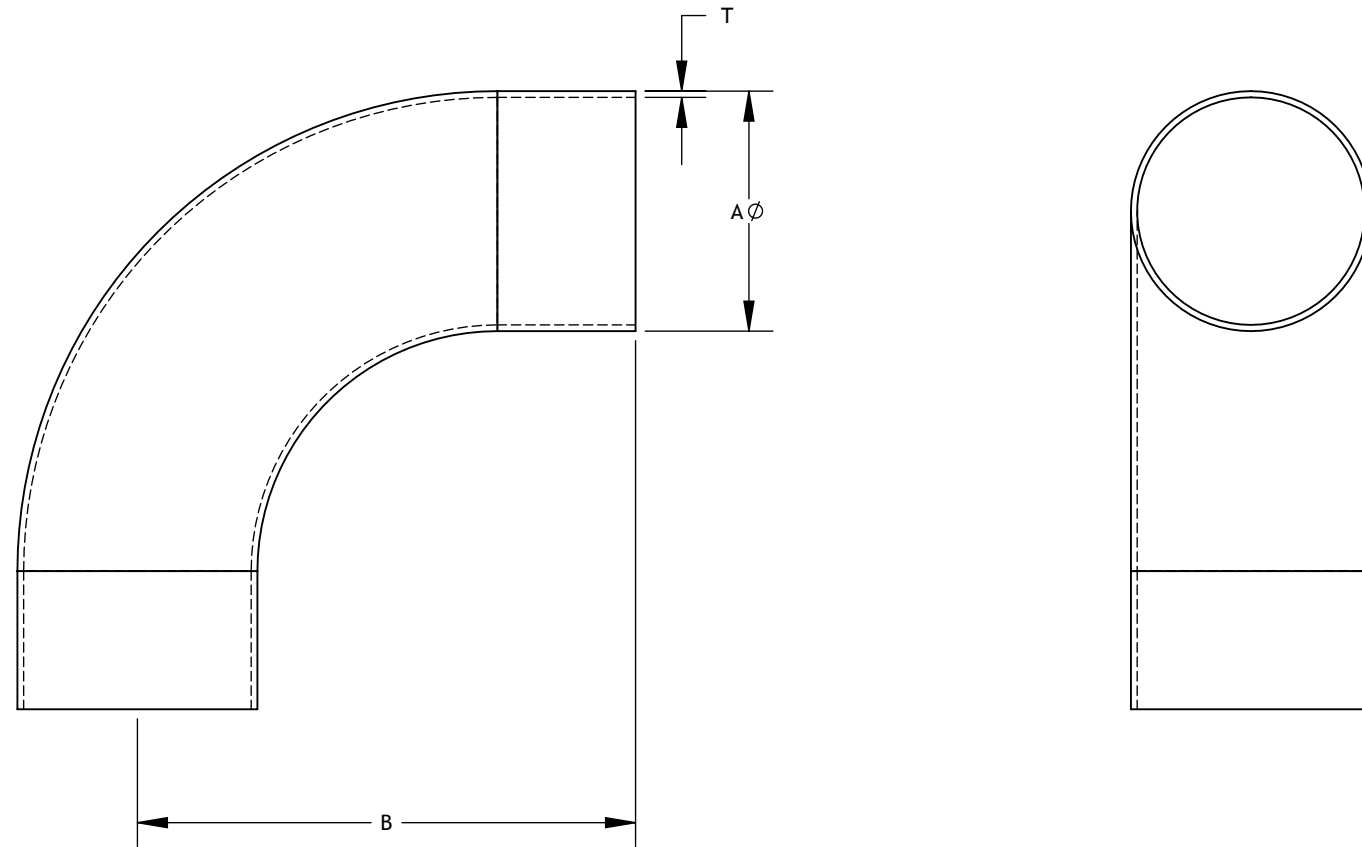


NOTES CONTINUED:

SKU	Part	Material	A		B		T	
			Inch	mm	Inch	mm	Inch	mm
L2S G0100	0710.0251.4010	304	1	25.4	2.063	52.4	0.065	1.65
L2S G0150	0710.0251.4015	304	1.5	38.1	2.937	74.6	0.065	1.65
L2S G0200	0710.0251.4020	304	2	50.8	4.063	103.2	0.065	1.65
L2S G0250	0710.0251.4025	304	2.5	63.5	5.189	131.8	0.065	1.65
L2S G0300	0710.0251.4030	304	3	76.2	6.311	160.3	0.065	1.65
L2S G0400	0710.0251.4040	304	4	101.6	8.311	211.1	0.083	2.11
L2S R0100	0710.0251.6010	316L	1	25.4	2.063	52.4	0.065	1.65
L2S R0150	0710.0251.6015	316L	1.5	38.1	2.937	74.6	0.065	1.65
L2S R0200	0710.0251.6020	316L	2	50.8	4.063	103.2	0.065	1.65
L2S R0250	0710.0251.6025	316L	2.5	63.5	5.189	131.8	0.065	1.65
L2S R0300	0710.0251.6030	316L	3	76.2	6.311	160.3	0.065	1.65
L2S R0400	0710.0251.6040	316L	4	101.6	8.311	211.1	0.083	2.11



0710_0251 L2S 90 DEGREE WELD ELBOW W TANGENT, PART PDM REV: 1.0

PROPRIETARY AND CONFIDENTIAL
 THE INFORMATION CONTAINED IN THIS DRAWING IS THE SOLE PROPERTY OF CRAFT KETTLE BREWING EQUIPMENT. ANY REPRODUCTION IN PART OR AS A WHOLE WITHOUT THE WRITTEN PERMISSION OF CRAFT KETTLE BREWING EQUIPMENT IS PROHIBITED.

NOTES AND TOLERANCES: (UNLESS OTHERWISE SPECIFIED)
 DIMENSIONS ARE IN MM [INCHES]
 TOLERANCES:
 .X ±
 .XX ±
 ANGULAR ± °
 MATERIAL - FINISH 0.8 µm NEXT ASSY -

CRAFT KETTLE
 BREWING EQUIPMENT

REV.	DATE	DESCRIPTION	ZONE
-	-	-	-

PART NAME: **90 DEG. LONG WELD ELBOW | 3A (L2S)**

DESIGNER	B. MOORE	07/13/2018	DWG. NO.	REV.
DRAFTER	B. MOORE	07/13/2018	0710.0251	1.0
CHECKER				
APPROVAL				

SIZE: B SCALE: 1:2 PROJECTION: SHEET: 1 OF 13