

OCTOBER 2021

Southern Living®

New House, Old Soul

96 Ideas for a Home You'll Never Want To Leave

OUR
KENTUCKY
IDEA
HOUSE

Pretty Color
SOLUTIONS

Livable
Outdoor
SPACES

Home Office
INSPIRATION



"The Doric columns make this house feel old and grounded," says architect Brandon Ingram. Durable and rot-resistant James Hardie siding is painted Sherwin-Williams' Emerald Rain Refresh Exterior Snowbound (SW 7004). The shutters and Clopay garage doors are painted Sherwin-Williams' Emerald Rain Refresh Exterior Roycroft Bottle Green (SW 2847). A bourbon pavilion (below right) in the backyard offers front-row views of the river.



THE FOREVER HOUSE

On a bluff overlooking the Ohio River, our 2021 Idea House in Louisville, Kentucky, shows off the pastoral beauty of the Bluegrass State. Find inspiration around every corner in our new-old home that's built to last



HOME TOOK on an entirely new meaning in 2020. As we started planning our 2021 Idea House, we imagined a

comfortable, welcoming place for a family to live, work, and play. With Louisville, Kentucky, tapped as our location, we called on builders who know the Bluegrass State best—Jason Black and Jimmy King of Artisan Signature Homes (a member of the Southern Living Custom Builder Program)—to bring our vision to life in their own backyard. Nestled in a new development, The Breakers At Prospect, this house sits on a prime waterfront lot along the Ohio River. The builders were joined by architect Brandon Ingram, interior designer Sarah Bartholomew, and

landscape architect Josh Myers to dream up a new home filled with tried-and-true decorating ideas. "A house can feel traditional and still live for today," Brandon says. Here, classic looks anything but outdated. Inspired by historical architectural precedents from around the South and coastal New England, Brandon designed a 5,545-square-foot Colonial Greek Revival cottage he named Riverbend. "The house doesn't give away all its secrets the minute you walk through the front door. It's a home you have to explore, and every new room is a surprise," he says. See how this extraordinary team balanced livable and lively ideas.

BY GRACE HAYNES PHOTOGRAPHS BY MARTA KOCHILT PEREZ STYLING BY PAGE MULLINS

SARAH'S SOLUTION

"Bring one old piece into every room," she says. Layering contemporary items with antiques gives historical character to new construction.



MAKE A SUBTLE INTRO

Instead of a rug, Sarah painted the entryway's floors in a checked pattern (which she carried through the interiors). Millwork gives a new build old-house charm. "We used that as a way to make each space unique but keep a consistent thread that runs throughout," Brandon says. The home starts out formal in the foyer but begins to relax as you move from room to room. "Exploring the house is like getting to know the family better as a guest—it loosens up," he says.



FIT FOR A CROWD

"I wanted this to be a defining comfortable space," Sarah says. In the living room, she kept the palette light with neutrals and touches of blue. A mix of lounge-worthy furniture provides plenty of seating for piling in this central gathering area. Transitioning from the dramatic foyer to a more intimate living room, Brandon added beams "to visually drop the ceiling. It's like wearing a cozy sweater—you feel at ease in a space that's not excessively large," he says. Maximizing natural light, the team installed Marvin Signature Ultimate Swinging French Doors that open to the porch. "Every pane is a frame around the view," Brandon says.





BUILD IN SURPRISES

"This is where an adult could sneak away to work, or it could double as a place to hang out with friends over a glass of bourbon," Sarah says of the library (at left and below). She wrapped the room in a woven wallcovering by Phillip Jeffries (Manila Hemp in Truffle Brown). A decorative artist created a stencil that mimicked the eclectic mix of fabrics and painted a border underneath the molding. A hidden desk built into the bookcase can be pulled out for conference calls and put up for cocktail hour. The tufted banquette with chocolate brown upholstery by Grant Trick Furnishings makes the small space feel like a tucked-away escape from the hustle of the house.



DESIGN FOR ALL OCCASIONS

"The formal dining room is the center of memories, especially in Southern houses," says Brandon, but he found a happy medium between dressy and laid-back (above). It can stay open to the kitchen for everyday meals, but concealed pocket doors can close for dinner parties. Sarah also balanced high and low, starting with the wallcovering (Lorenzo in Taupe on Oyster by Bennison Fabrics from Ainsworth-Noah). "It's a formal damask pattern executed in a casual way," she says. She paired an antique farm table with wicker chairs. "Mix pieces your grandmother may have passed down with newer ones. It doesn't feel brand-new but doesn't seem dusty," she says. In the scullery (at right), dinnerware from The Southern Living Collection Exclusively at Dillard's can be displayed in glass-front Wellborn Cabinet, Inc. cabinetry. Use the extra counter space for party prep.





**REDEFINE HARD-
WORKING SPACES**

The colorful studio is like "the family epicenter," says Brandon. Connected to the kitchen and laundry room, this space (below and right) is a multiuse hub where kids can sprawl out with school projects at the table and parents can work at the built-in desk. Shelves and cabinetry provide storage for book bags, games, and art supplies. The bench seat takes advantage of the view. "Areas that work hard can still be beautiful," he adds. Sarah brought a playful palette to the utilitarian space; Lake August's Nasturtium in Bigleaf wallpaper shines against trim in Sherwin-Williams' Emerald Designer Edition Leaflet (SW 9674).



LET THE SUN SHINE IN

"Find things that speak to your past, and bring them into the house in an updated way," Sarah says. In the downstairs guest bedroom (above), the skirted coverlet recalls memories of beds at her grandmother's house, but it's kept fresh in a yellow-and-white ticking stripe. "It's a nod to the past without feeling dated," she says. Layering yellow textiles in various shades, patterns, and textures kept the palette feeling fun and cheery instead of bold and heavy. A built-in morning bar (at left) adds another hospitable amenity for weekend guests. This bedroom could also function as the primary living quarters for aging parents with a Sleep Number mattress, an adjoining full bath, easy access to the laundry room, and a separate side entrance.



**SARAH'S
SOLUTION**

She used only durable Sunbrella fabrics in the studio (even for the shades), taking any stress out of potential messes.

SARAH'S SOLUTION

Behind the scalloped headboard of the white-lacquered canopy bed by Reid Classics, the designer hung curtains to add another layer of softness to the bedroom.



FRAME THE VIEW

Brandon describes the main bedroom, which is set in a back corner of the first floor, as "the catbird seat for the whole house." It's right off the living room, with French doors that open to the covered porch. "You have views, you have access, and you're connected. But you can also easily retreat," he says. Sarah emphasized the sweeping scenery by painting the trim Sherwin-Williams' Emerald Designer Edition in Silver Lake (SW 9633) and keeping the walls white (Sherwin-Williams' Emerald Designer Edition in Cotton, SW 9581). "It makes the color pop without feeling overpowering," she says.

SARAH'S SOLUTION

"I like a warm white paint that has a good balance between gray and yellow undertones. I imagine having a bright white and then rubbing a little bit of dirt in it—that's my perfect shade," she says.

GIVE CLASSICS A REFRESH

"Over time, the Buttbord used on the walls and ceiling will continue to move, adding to the home's character," says Jason. Inspired by Bunny Mellon's signature painted wood floors, Sarah perked up the cabinetry (in Sherwin-Williams' Emerald Designer Edition Snowbound, SW 7004) with a blue-and-white geometric pattern underfoot. She says butcher block atop the island adds a "casual warmth," which is further complemented by brass accents on the Monogram Appliances range. The rear kitchen (below) serves as a pantry, coffee bar, and appliance-storage area.



"Open shelves float in front of the window and get integrated into it," says Brandon, who added the extra storage without obstructing the view. The prep space overlooking the porch is prime for hosts. Mix drinks, arrange a charcuterie board with Kerrygold USA cheeses, and serve guests outside.

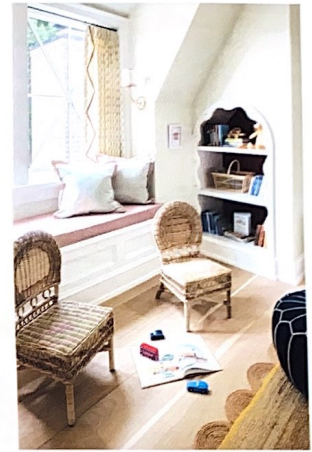
SARAH'S SOLUTION

"White upholstery can be risky. If you're getting a new sofa, why not make it interesting and change the fabric from one portion to the next?" she says of the two-tone sectional.



DIAL UP DOWNTIME

There's a "more the merrier" attitude upstairs in the family-friendly media room (at left). An elliptical window lets natural light pour into the airy space, which Sarah wrapped in a wood-grain wallpaper by Nobilis. She kept potential spills in mind when designing the sofa, covering the base of the LEE Industries sectional in Sanders Oyster and the cushions in Nolan Maingold. The French doors open to a morning deck (below) for indoor outdoor entertaining and a bird's-eye view of the landscape. "You can capture some rays during the day and watch the sun set over the Ohio River in the evening," Jason says. A scalloped awning in Sunbrella's Oyster fabric can be rolled out to offer shade or provide shelter on rainy days.



DESIGNATE A SPOT FOR KIDS

Adjacent to the all-ages media room, the children's study (above and right) doubles as a playroom and homework space thanks to the individual built-in desks. The Namay Samay fabric from Ainsworth-Noah used for the window treatments inspired the room's unexpected color combo of red and pale green. Sarah painted the walls Sherwin-Williams' Emerald Designer Edition Barely Pear (SW 9666) and chose a red-and-white ticking stripe for the window seat's cushion. "When red is used sparingly, it can make a space feel fun and still be sophisticated," she says.



SARAH'S SOLUTION

"Find a creative way to make a statement, even in a tiny space," says the designer. Instead of wallpaper, she used a stencil to bring the bedroom's white walls to life.



PLAY THE BLUES

Almost every inch of this guest bedroom—from the ceiling and the floating nightstands to the bulletin board and light switch—is covered in a hand-painted stenciled pattern (Sherwin-Williams' Emerald Designer Edition in Azure Tide, SW 9684) by artist Ken Dean. "Keeping the design small prevents it from becoming overwhelming," says Sarah. She continued the blue-and-white scheme on the scalloped Capri Platform Beds by Oomph Home (covered in a playful striped fabric by Les Indiennes from The Lot Contributing Vendors).



CREATE AN OUTDOOR ATTRACTION

The rear covered porch (with over 500 square feet of living space) is divided into two sections: a dining room and a sitting area. "Typically, you see an outdoor living room attached to the main living room and an outdoor kitchen attached to a kitchen. We flipped that notion and set the outside living room right behind the kitchen," Brandon says. The Summer Classics Home teak furniture can withstand the elements, while low-maintenance Zuri Premium Decking in Hickory by Royal Building Products mimics the look of hardwood. A signature Southern "haint blue" ceiling is painted Sherwin-Williams' Emerald Rain Refresh Exterior in Misty (SW 6232). Centering the hangout zone around the fireplace keeps the space inviting year-round.





LISTEN TO THE LOCATION

The home is oriented around the scenery to the rear, taking advantage of the panoramic views. "There's a connection to the outside from almost every room," says Jason. Landscape architect Josh Myers used manicured boxwoods and other shrubs from the *Southern Living Plant Collection* to incorporate the patio into the lawn.

DINE ALFRESCO

Located right outside the main bedroom, the Metropolitan Signature Kitchen by Kindred Outdoors + Surrounds is designed for weekend cookouts. Between the dining table, the lounge area on the patio, and the broad brick steps, there are plenty of places for guests to gather.



ALL ABOUT THE DETAILS

Smart and stylish design ideas for even the smallest spaces



MAIN BATH

A freestanding cast-iron tub is wrapped in a basket skirt, which was woven from willow saplings by Kentucky artist Justin Roberts of Walk the Willow.



BOURBON BAR

The best way to keep a Kentucky living room ready for company? A built-in bar with a Monogram Appliances wine fridge and bourbon from Log Still Distillery.



FRONT POWDER ROOM

Instead of wallpaper, Sarah opted for strié, a painting technique that mimics the textural look of a covering like seagrass, with olive and cream shades.



PET AREA

"Every pup needs a spot in the house," says Sarah of the built-in pet nook in the laundry room. It's an ideal place for toys, a bed, and bowls of Pedigree dog food.



TWIN BATH

A freestanding tub adds an old-fashioned touch. "Play with the floor as another surface," says Sarah, who carried on the blue-and-white scheme with Daltile tiles.



LAUNDRY ROOM

Living beside a river inevitably means mud, so Sarah chose a large sink for soaking dirty clothes. A skirt hides cleaning supplies stashed underneath.

SPECIAL ADVERTISEMENT

OUR 2021 IDEA HOUSE KEY CONTRIBUTORS

Ainsworth-Noah
ainsworth-noah.com
Ann Morris Inc.
ann-morris.com
Annie Seike
annieseike.com
Arwyn Binding
Products Company
arwyndecorative.com
Armac Martin
armacmartin.co.uk
Artist Ken Dean
artistkendean.com
Authentic
Designs, Inc.
authenticdesigns.com
B&B Metal
Designs
shopbbhardware.com
Bojay Inc.
bojayinc.com
Bona
bona.com
Boone Fabrics
502-245-6900
Bunny Williams
Home
bunnywilliams.com
Cambria
cambrabrausa.com
Carly Home
carlyhome.com
Carpet
Specialists
carpetspecialists.com
Century
Entertainment
centuryliving.com
Chairish
chairish.com
Cheslea Fly Art
chesleaflyart.com
Chism Irrigation
502-267-1180
Chuck & Anthony
Ballard
502-594-2527

Circa Lighting
circa Lighting.com
Closet Factory
closetfactory.com
Corrigan Electric
corriganelectric.com
Cowtan & Tout
cowtan.com
Cruel Mountain
Designs
cruelmountain.com
Cunningham
Door & Window
Cunningham
door.com
Currey &
Company
curreyandcompany.com
Daltile
daltile.com
David Lusk
Gallery—Memphis
& Nashville
davidluskgallery.com
Derby City Paving
derbycitypaving.com
E Boiardi
Studio
eboiardiastudio.com
Element
Construction
elementsilc.com
Emtek Products
emtek.com
Fabulous
Things, Ltd.
fabulousthings.com
Ferguson Bath,
Kitchen & Lighting
Gallery
ferguson.com
Fibeworks
fibeworks.com
Fireplace
Distributors Inc.
fireplacesforyou.com

Fletcher
Williams III
fletcher3.com
Fleur Home
fleurhome.com
Fritz Porter
fritzporter.com
From Jaipur
With Love
fromjaipurwithlove.com
Grand Finale
Cleaning, Inc.
gfcleaning.com
Grant Trick
Furnishings
granttrick.com
Grizzel & Mann
grizzelmann.com
Heather Chaddock
Textiles
heatherchaddock.com
Hector Finch
Lighting
hectorfinch.com
Holland and Sherry
hollandandsherry.com
J Gray Excavating
502-253-1855
Jayne Thompson
Antiques Inc.
jaynethompson.com
Jonathan
Stanton, Inc.
jonathanstanton.com
Katie Leede
& Company
katieleede.com
Kayce Hughes Art
kaycehughes.com
KEPT
kethome.com
Kettlewell
Collection
kettlewellcollection.com

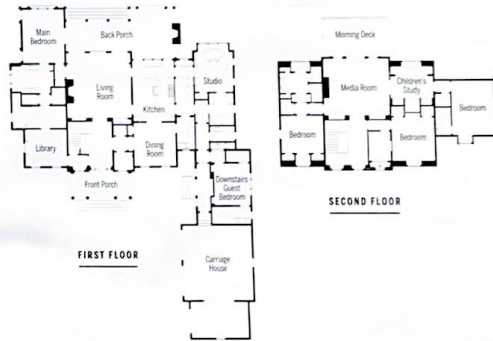
Kimball &
Bean Garden
kimballandbean.com
King's House Rugs
kingshouseoriental.com
Kravet
kravet.com
Lake August
lakesaugust.com
Larry Stone
Custom Sheet
Metal, LLC
@lscustommetal.com
LEE Industries
leedesigns.com
Leontine Linens
leontinelinens.com
Louisville Spray
Foam Insulation
louisvilleinsulation.com
LSC Inc. Interior
Trim
812-572-3414
Luxe Surfaces Inc.
cambrusa.com
Mainly Baskets
Home
mainlybaskets.com
Margold Living
margoldliving.com
Marvin Maeser
Plumbing
502-266-6544
Matouk
matouk.com
McKenzie Dove
mckenzie-dove.com
MDM Design
Studio
mdmdesignstudio.com
Mia Carameros
miacarameros.com
Mirror Image
Home
mirrorimagehome.com
Modern Matter by
Addison Weeks
modern-matter.com

Nashville Artist
Collective
nashville.artistcollectives.org
Native Spin
nativespin.com
Natural Curiosities
naturalcuriosities.com
New Level
Construction LLC
502-491-6550
Nickey Kehoe
nickeykehoe.com
Nobilis
nobilis.fr
oomph Home
oomphhome.com
Original BTC
originalbtc.com
Ornis Gallery
ornisgallery.com
Perry and Kaelin
Landscape &
Maintenance
502-267-5017
Phillip Jeffries
phillipjeffries.com
Pindler
pindler.com
Prudential
Heating and Air
Conditioning
prudentialvac.com
Quadrille
quadrillefabrics.com
Ramos Contracting
Reid Classics
reidclassics.com
Renaissance
Tile and Bath
renaissance-tileandbath.com
Renée Bouchon
renee-bouchon.com
Repel Systems,
LLC
repelsystems.com
River City
Foundations, LLC
rivercityfoundations.com

Rockerbuilt
rockerbuilt.com
Schaub and
Company
schaubandcompany.com
Schoolhouse
schoolhouse.com
Schumacher
schumacher.com
Serena & Lily
serenaandlily.com
Southern Pine
Swing Company
southernpinewing.com
Stark Carpet
starkcarpet.com
Suzanne
Tucker Home
suzannetucker.com
Taylor Linens
taylorlinens.com
The Coppersmith
thecoppersmith.net
The Houndry
thehoundrylife.com
The Lot
Contributing
Vendors
thelotshowroom.com
The Tile Shop
tileshop.com
Tillett Textiles
t4fabrics.com
Trademark
Universal Stone
trademarkuniversalstone.com
Travis &
Company
travisandcompany.com
Walk the Willow
with Justin Roberts
stickbender.com
Weezie
weezietowels.com
Willis Klein
willisklein.com

THE HOUSE PLAN

Build Riverbend, our 2021 Idea House



Hover your phone's camera over the smart code for details on the Riverbend (SL-2066) house plan.

This 5,545-square-foot home offers five bedrooms, five full baths, and two half baths (plus plenty of porch space for outdoor living). Buy the plan for Riverbend (SL-2066) at houseplans.southernliving.com.