

Southern Living®

IDEA
HOUSE
ISSUE



River Dunes
in Oriental,
North Carolina

Make
Yourself
At Home

148

Ways To
Update,
Renovate
& Decorate

THE FALL PARTY
PLAYBOOK

TEXAS' LOST STATE PARKS

THE PRETTIEST TOWN
IN TENNESSEE

OUR BEST POT PIES

\$4.99US

10>



OCTOBER 2022

IDEA HOUSE

THE GREAT ESCAPE

For our 2022 Idea House, we hightailed it to the North Carolina coast to build a gathering place that inspires relaxation and invites togetherness.



TOUR OUR Waterfront Getaway

The 2022 Southern Living Idea House is open for tours from now through December 18. Visit Thursdays and Sundays from 12 to 5 p.m. and Fridays and Saturdays from 10 a.m. to 5 p.m. Buy tickets at riverdunesideahouse.com. A portion of the proceeds goes to three local charities: HeartWorks, Hope Clinic, and Pamlico Partnership for Children.

Make it Modern

At first glance, the James Hardie Artisan Shiplap Siding reads like traditional siding, but it's actually laid much flatter for a more contemporary look.

BY BETSY CRIBB PHOTOGRAPHS BY LAUREY W. GLENN STYLING BY KENDRA SURFACE

SOUTHERN LIVING 77

A man cruises past in a top-down, vintage blue convertible—speedy enough to catch a breeze but not so fast that he can't give a friendly wave. "That's what it's all about right there," says Ed Mitchell, the president and a founding developer of River Dunes, a community just outside the fishing village of Oriental, North Carolina. Positioned where the Neuse River flows into the Pamlico Sound, this is a place where rest and relaxation come easily. It was a no-brainer for the location of our 2022 Idea House—a winsome and unfussy retreat where there's plenty of room for the whole family (and the occasional surprise guest) to stretch out and settle into an unhurried rhythm of leisure.

We engaged a talented team from across the Carolinas to craft our coastal getaway. Interior designer Charlotte Harris Lucas of Charlotte Lucas Interior Design, builder Jordan Maroules of SLD Custom Homes, architect William Court of Court Atkins Group, and landscape architect Daniel Keefer of Wilmer Jones Keefer Ltd. "For me, an escape isn't a spot to go and hide," says Charlotte. "It's somewhere you can feel happy and calm but also inspired and rejuvenated. It's important to have a place that evokes those feelings...not just in you but in the guests who might come over too." The home is designed with the main house in front and two additional structures, a carriage house (which has a bonus suite over the garage) and an artist's studio/guesthouse, flanking a courtyard in the back. "This layout creates opportunities not only for family connectivity but also for getting away," says William. With a winning combination of cohesive indoor-outdoor spaces and interiors that subtly nod to the coastal locale, our team dreamed up a waterfront escape that's cleverly current and thoughtfully tied to tradition.



CHARLOTTE'S OLD-SOUL MOVE
Referencing the delect tiles often found in historic homes, she wrapped the great room fireplace in blue-and-white scenes from Renaissance Tile & Bath to ground the modern look.



Shell Game
Dawn Nakamura Interiors' coastal take on millwork references the house's location without veering into kitsch.

**CHARLOTTE'S
OLD-SOUL MOVE**

To play up the classic trellage, crafted by Fuller Architectural Panels in Raleigh, she painted the ceiling in one shade and finish (Sherwin-Williams' Barely Pear, SW 9666, in High Gloss) and the trellis in another shade and finish (Sherwin-Williams' White Snow, SW 9541, in Satin).



Frame the Scenery

Since the dining room (at left) looks out over the flower-filled courtyard, Charlotte designed it to feel like a garden oasis. She upholstered the chairs in Schumacher's Floreana fabric in Berry and then used the same textile for the window treatments. "This space can be dressed up for a beautiful summer supper with lots of friends or kept simple as a bright and airy breakfast room," says the designer. "It goes both ways." William notes that transom windows over the doors stretch the views from floor to ceiling, adding to the alfresco vibes. "We have porches around three sides of the house, which can affect the light quality," he says. "So we used as much glass as possible to flood the interior with sun."

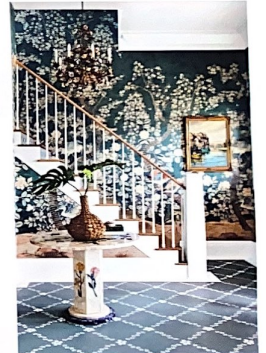


IDEA HOUSE



Design for Every Day

Pictured above, the kitchen—with its Monogram Appliances Custom Brass Hood and peachy cabinetry (in Sherwin-Williams' Coralite, SW 9698)—is filled with cheery shades. Hardworking amenities, like the Monogram Appliances Stainless Steel Warming Drawer, are handsomely incorporated into the design scheme thanks to custom herringbone-patterned panels by Heirloom Carpentry LLC in Raleigh. In the foyer (at right), Charlotte commissioned North Carolinian Madison Mauck of Mauck Made Art to hand-paint the throwback-stenciled design on the floors as well as the stair treads. Sherwin-Williams' Tread-Plex is a good option for painting floors, because the finish can withstand high traffic, wet feet, and dirty paws.



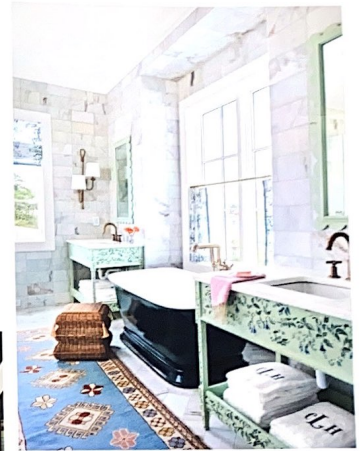


CHARLOTTE'S OLD-SOUL MOVE
 Antique furnishings, such as the table by the window, root the wide-open space in timeless style without taking away from the view. "It's all about sophistication and serenity in this room," the designer says.

IDEA HOUSE

Shift into Second

While the primary bedroom is often situated on the first floor, a second-story setup was the only way to go in this house, says William. "We wanted this suite (at left) to look out on the harbor and to be on its own, away from the action," notes the architect. "Moving it upstairs to capture those views became really important." Charlotte kept the focus on the water, too, orienting the four-poster bed from Reid Classics toward the private porch. At the foot of the bed, a silk-covered bench from Coley Home makes a pretty perch to slip off shoes or take in the scenery. She chose a creative paint treatment for the walls and hung a floral painting by Mary Kamerer Fine Art for an added burst of color. Command Brand Universal Picture Hangers secure it to the wall and provide flexibility to move pieces from room to room.



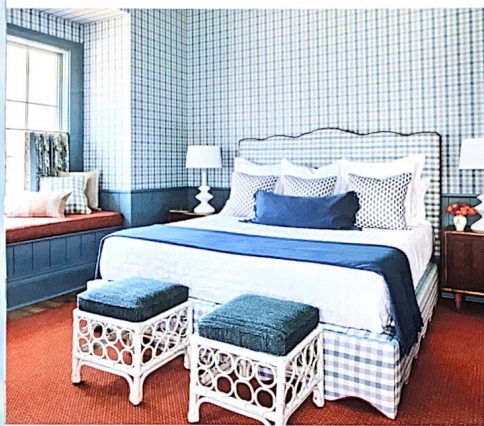
Savor Little Luxuries

Oomph vanities hand painted by Madison Mauck of Mauck Made Art, the Double Bimini Sconce by Regina Andrew, and a vintage Oushak rug warm up the primary bath (above). The primary bedroom vanity (at right) serves as a sophisticated place to prepare for the day. The Monogram Appliances Double-Drawer Refrigerator (which is hidden by custom panels) keeps eye creams and other skin-care items cool and ready for use.



Best Seats in the House
 Marvin French doors open from the primary bedroom onto the upstairs porch. Lounge chairs offer spots to settle in for the sunset.





Pile On the Patterns

Charlotte pulled no punches when designing the second-story guest room (at right), covering the walls in House of Harris' playful peach Bamboo Garden wallpaper that is destined to attract admirers of all ages. "I stick to a few rules of thumb for mixing patterns," she says. "Whenever I have a floral, I always try to balance it with a striped or geometric pick—something with structure." For instance, she hemmed in the loose botanical design of the wallpaper with a striped rug from Annie Selke and pops of color from the Reid Classics beds, the Universal Furniture dresser, and the Joelle Mini Lamps by Regina Andrew. On the other wall, a pillow-happy sofa (below) finds its complement in a lively Eleanor Scott Davis Fine Art painting.

CHARLOTTE'S OLD-SOUL MOVE

To match the ebullience of the wallpaper, the designer cloaked the stately Reid Classics four-poster twin beds in a zippy shade of green (Sherwin-Williams' Olivetone, SW 9670). Having a pair of beds offers flexibility for hosting guests.



Invite Summerhouse Nostalgia

Charlotte anchored the downstairs guest room (above) in a wide swath of soothing blue (Sherwin-Williams' Morning at Sea, SW 9634) and then wrapped the rest of the space in Saybrook Check Spa Blue by Thibaut. "It's such a classic pattern," she says. More than an aesthetically pleasing sanctuary, a first-floor suite is also a practical move, notes William. "This element can make the home effective for multigenerational living," he says.

Be Our Guests
An Oomph vanity in a bright custom yellow adds personality to the downstairs guest bath.



Embrace the Classics...

For the screened outdoor living room, Charlotte leaned into tried-and-true details. "It feels like the epitome of a Southern porch with all the wicker," she says. The Summer Classics Home Soho Woven Lounge Chairs and Sofas are ideal for this fireside space. "We covered the cushions in a navy-and-white ticking stripe that's appropriately coastal," she adds about the Sunbrella Pinstripe Navy fabric. "It's like something that would be on a sailboat or a yacht."



PAMPAS GRASS WREATH: FAIRMILK; WREATH: FAIRMILK; WREATH: FAIRMILK



**...But Don't Be Afraid To Rethink
Traditional Elements**

"We decided to put a twist on Southern louvered shutters and used a decorative wooden panel on the front of the screened outdoor dining area," says William Underfoot. Zuri Premium Decking in Chestnut by Westlake Royal Building Products mimics the interior floors but is a smarter choice for outdoors since it requires far less maintenance.

Steal-Away Spaces

Six nooks and crannies designed to offer a little extra breathing room



SNUG FAMILY RETREAT

Walls covered in Sunbrella's Detail Linen and a desk enveloped in Sunbrella's Pique Midnight soften the upstairs coffee bar and reading bay.



JEWEL BOX WET BAR

Glassware and mugs from the *Southern Living* Collection Exclusively at Dillard's make this spot a gem. Hide out here for a sip of rosé and a bite of Kerrygold cheese.



DREAMY ARTIST'S STUDIO

Natural light and garden hues spill into the backyard getaway through the Marvin Skycove, which serves as a cushy window seat for journaling or napping.



PRETTY POWDER ROOM

Your guests will likely visit the restroom, so invest in the details, says Charlotte. She updated the retrofitted vintage wicker vanity with a coat of paint.



HAPPY CARRIAGE HOUSE

A suite above the garage offers guests a little privacy—and a dose of Americana—with hand-painted stenciling on the walls and a sunny Schumacher floral fabric.



SMART BACK KITCHEN/LAUNDRY

Even the most hardworking corner of the house feels like a mini getaway, thanks to the Alexa-activated GE Profile Sapphire Blue washer and dryer.

Outdoor Space
Lounge chairs
by Summer
Classics Home
foster comfy
conversation.



**A LOW-MAINTENANCE
YARD SOLUTION**

Artificial turf covers the courtyard. "It's a nice way to have a little green space that you don't have to keep up," says landscape installer Rachel Tipton, who owns nearby Harbourside Garden Co. Azaleas from the *Southern Living Plant Collection* deliver a big dose of classic Carolina charm.

Meet the Team



THE
ARCHITECT

William Court
COURT ATKINS GROUP
courtatkins.com

"We had the chance to tell the story of how a home can become a multigenerational oasis," says William. "You might have more people in the house than you'd planned for, so we designed for that and created a place that would accommodate these different scenarios."



THE
DEVELOPER

Ed Mitchell
RIVER DUNES
riverdunes.com

"This is a place that families will come back to generation after generation. We're trying to create a stage for memories, and that's what all master plans should be," notes Ed. "We feel privileged to be able to build and develop here and to live on a body of water like this."



THE
BUILDER

Jordan Maroules
SLD CUSTOM HOMES
sldcustom.com

"Outdoor living is a big focus of mine, and we design a lot of our coastal homes to prioritize that," says Jordan. "Those spots become secondary living spaces. The outdoor kitchen and the courtyard create more areas where you can spend time with family and friends."



THE LANDSCAPE
ARCHITECT

Daniel Keefer
WITMER JONES
KEEFER, LTD.
wjktld.com

"We wanted to capture the feeling of a historic Southern garden that complements the architectural design and character of the community," says Daniel. "The arbor above the walkway features vines of varying textures and provides shade."



THE INTERIOR
DESIGNER

**Charlotte
Harris Lucas**
CHARLOTTE LUCAS
INTERIOR DESIGN
charlottelucasdesign.com

"My style is rooted in a kind of Southern sophistication, but it's really fun. There's nothing too formal or forced about anything I do, really. It's all about being livable and providing a warm welcome into a home," says Charlotte, who worked her magic with help from project manager Catherine Whittaker. "For this house, I was inspired by older homes on the coast. I like the idea of re-creating some of those elements in a new place; it's about using past techniques with modern materials."

The House Plan

Shipsshape Details

The garage features Clopay Canyon Ridge Louver insulated doors that deliver nautical vibes with a coat of Sherwin-Williams' Charcoal Blue (SW 2739).



BUILD THE 2022 IDEA HOUSE

FIRST FLOOR



SECOND FLOOR



Hover your phone's camera over the smart code for details on The Great Escape (SL-2082) house plan.

START DREAMING ABOUT YOUR OWN GREAT ESCAPE

With a two-story front porch, three bedrooms in the main home, and an additional guesthouse and carriage house, there are plenty of places to find peace and quiet here. Buy the plan: houseplans.southernliving.com/plans/sl2082.

ADVERTISEMENT

ESCAPE WITH COLOR

Like color preferences, everyone's idea of a getaway is different and personal. Your perfect escape from the everyday can be adventurous and dramatic, it could be restful and serene—maybe it's somewhere in between. Accommodating all comfort levels into a fearless embrace of color is no easy task, but designer Charlotte Lucas rose to that challenge in this year's **Southern Living Idea House**, a vacation home concept in River Dunes Oriental, NC.

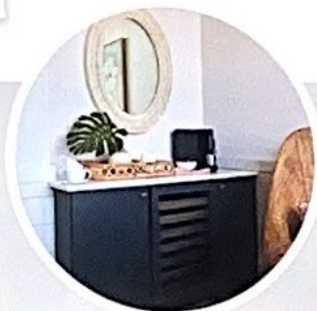


Carambola
SW 9667

Barely Pear
SW 9666

TAKE A SHINE TO IT

Getting comfortable with color can mean more than choosing a bold shade. For the primary bedroom, Charlotte opted for pale shades, but used painting technique for an unexpected twist, creating a "stripe" effect by alternating eggshell and semi-gloss finishes in **Barely Pear SW 9666** and **Carambola SW 9667**.



SINGULAR SENSATION

The family retreat room can be a place to unwind or focus on solitary tasks, like a bit of work or a private phone call. A mostly warm neutral palette is cozy, comfortable, and oh-so-inviting, but a pop of blue using **Sea Mariner SW 9640** in Satin on the cabinetry adds a layer of sophistication that feels both luxurious and empowering.

Sea Mariner
SW 9640

Photo: Chris Edwards; Stylist: Kendra Surface

BRING YOUR COLOR TO LIFE. You bring the vision, and we'll bring the color solutions to help bring your color to life. For more information visit s-w.com/colorconfidence.



SHERWIN-WILLIAMS.

FINI
... TRY IT - LOVE IT - FIND IT - TRY IT - PAINT IT - LOVE IT - FINI

Our 2022 Idea House Sponsors

1. Clopay®

Imagine loving your garage door! With a variety of styles and colors that make homes stand out, Clopay garage doors can't be ignored. clopaydoor.com



2. Command™ Brand

Command™ Brand gives you the freedom to hang and rehang what you want, wherever you want, damage free. Do No Harm. command.com



3. James Hardie

Transform your home exterior with the endless design possibilities, trusted protection and long-lasting beauty of Hardie® fiber-cement siding products. jameshardie.com



4. Kerrygold

Kerrygold butters and cheeses are made with milk from grass-fed cows that are raised on small, family-run Irish dairy farms. The all-natural milk our cows produce is what makes our products so flavorful and creamy. Find your nearest store at kerrygoldusa.com.



5. Marvin®

Inspired by the finding that we spend an estimated 90% of our time indoors, Marvin has married its 110 years of building expertise with a forward-thinking, people-first design approach that delivers an immersive experience and enhances the connection with the outdoors, promoting air, light, and views. Visit marvin.com/southernliving skycove to learn more.



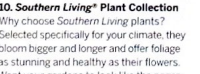
6. Monogram Appliances

With uncompromising attention to every detail, Monogram Appliances truly Elevate Everything™ in luxury kitchens. Monogram's Minimalist and Statement Collections, featuring rich materials and precise design, are crafted with style that endures. monogram.com



7. Regina Andrew

Regina Andrew's lighting, furniture, and decor spark both self-expression and creativity through unforgettable design. reginaandrew.com



8. Sherwin-Williams

Achieve a flawless finish with our best hide



yet with Emerald® Designer Edition™ Interior Latex, available in 200 exclusive colors. emerald designer.com

9. Southern Living® Plant Collection

Exclusively at Dillard's Shop the complete Southern Living® Collection for bedding, bath, home decor, and more. Available in-store and online. dillards.com/southernliving

10. Southern Living® Plant Collection

Why choose Southern Living plants? Selected specifically for your climate, they bloom bigger and longer and offer foliage as stunning and healthy as their flowers. Want your gardens to look like the pages of Southern Living®? These plants deliver. southernlivingplants.com

11. Summer Classics Home

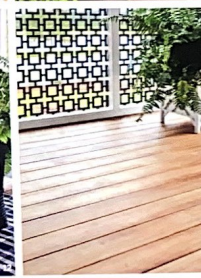
At Summer Classics Home, we've been turning our passion for superb quality and breakthrough design into original luxury home furnishings for generations. Family owned and operated, we innovate to bring you beautiful living, outdoors and in. summerclassichome.com/southernliving

12. Sunbrella®

Sunbrella helps you create an inspired home inside and out with leading performance, best-in-class design, and long-lasting comfort. sunbrella.com

13. Zuri® Premium Decking

Zuri® Premium Decking combines the natural beauty of exotic hardwood with the durability and low maintenance requirements of PVC. royalbuildingproducts.com/zuri



IMAGES BY GUY FORD/STYLING: KENDRA SHERAZADE

2022 Idea House Key Contributors

Against the Wall, Webb Chadwick
336/459-6122

Ann Schwartz Art
annschwartzart.com

Annie Seike
annieseike.com

Applied Aesthetics
Painting Studio
aapaintingstudio.net

Barefoot Creek Custom
Furniture & Reupholstery, LLC
barefootcreek.com

Belgard
belgard.com

Bright's Total Masonry
910/258-2239

Campania Fine Moulding
campaniafinemoulding.com

Century Furniture
centuryfurniture.com

Chipper King Wallpapering
& Graphics
704/569-4389

Classic Bedroom Design
classicbedroomdesign.com

Coley Home
coleyhome.com

Cowan & Tout
cowan.com

Dawn Nakamura Interiors
dawnnakamurainteriors.com

Eastern Wood Products
easternwoodproducts.com

Eleanor Scott Davis Fine Art
eleanor.scott.davis.com

Emtek Products
emtek.com

Fibreworks
fibreworks.com

Fuller Architectural Panels
fullerap.com

GTI Stone Design, LLC
919/279-8433

Hannah Yanetsko
hsya.studio

Harbourside Garden Co.
hgsc.com

Hairloom Carpentry LLC
919/801-4321

Highland House
highlandhousefurniture.com

House of Harris
houseofharris.com

Ideal Glass & Mirror
idealglassandmirror.net

Ihris Supply
ihrissupply.com

Jayne Thompson Antiques Inc.
jaynethompsonantiques.com

JKB Refinish
jkbrefinish.com

Kate Barreto
katebarreto.com

Ladies Touch of Newport
ladiesstouchnc.com

Leontine Linens
leontinelinens.com

Made Goods
madegoods.com

Mainly Baskets Home
mainlybaskets.com

Mary Kammerer Fine Art
marykammerer.com

Mauck Art
mauckart.com

Modern Matter
modern-matter.com

Nashville Rug Gallery
nashvilleruggallery.com

Native Spun
nativespun.com

oomph
oomphhome.com

Pamela Wingard Fine Art
pamelawingard.com

Phillip Jeffries
phillipjeffries.com

Precision Moulding
& Woodworks
precisionmouldingandwoodwork.com

Quillen Welding Services
quillenwelding.com

Raines Landscape Inc.
252/229-9026

Ratcliffe Art
ratcliffeart.com

Reid Classics
reidclassics.com

Renaissance Tile & Bath
renaissancebathandtile.com

Renée Bouchon
reneeibouchon.com

Renovation Exterior
919/625-4659

Samuel & Sons
samuelandsons.com

Schumacher
schumacher.com

Serena & Lily
serenandlily.com

Shannon Woodford Fine Art
shannonwoodford.com

Sheila Cook
864/439-0609

Sorella Glenn
sorellaglen.com



Visit Oriental
The salty hamlet perched along the Neuse River holds fast to its long-established identity as a port for sailors, boaters, and anglers. Life here is all about the water. Although roughly 900 residents call Oriental home, there are about 2,700 boats.

Experience River Dunes
Fourteen miles of waterfront shape this coastal haven, where respect for the natural shoreline is the guiding force. "With a beautiful setting like this, we've got to be good stewards," says Ed Mitchell, who's the president and one of the founding developers. "If you live here, there's a certain responsibility you have to take on." Just as careful consideration for the environment steers River Dunes' growth, historic Southern architecture drives the design: New homes and gathering spaces are infused with a timeless spirit.

Southern Living HOUSE PLANS

Discover Your Style

at SouthernLivingHousePlans.com



SELECT FROM OVER 1,000 LIVABLE DESIGNS FROM THE SOUTH'S BEST ARCHITECTS.



NEW TIDELAND HAVEN
PLAN #1824
Design by Our Town Plans

"Sheltered by deep roof overhangs, the wrap-around porch is very generous and livable," says designer Suzanne Stern of Our Town Plans. "Being a single-level plan means that it's more accessible. And, the vernacular styling allows people to envision it at the beach, lake, river, mountain, or farm - basically anywhere."

SQUARE FOOTAGE: 2,622
BEDROOMS: 3 BATHS: 3.5

PHOTOGRAPH COURTESY OF GLEN EUSTACE WOODS/NEUSE RIVERFOOD