



KNIT | SKILL LEVEL: INTERMEDIATE

### MEASUREMENTS

Approx 46" x 61" [117 x 155 cm].

### GAUGE

11 sts and 14 rows = 4" [10 cm] in stocking st.

### MATERIALS

Bernat® Softee Chunky™	(5.3 oz/150 g; 161 yds/147 m)		(3.5 oz/100 g; 108 yds/99 m)
True Grey (03044) or (28044)	<b>9 balls</b>	<b>OR</b>	<b>14 balls</b>

Size U.S. 11 (8 mm) circular knitting needle 29" [75 cm] long **or size needed to obtain gauge.** Cable needle.

### ABBREVIATIONS:

**2tog** = Work next 2 stitches together

**Approx** = Approximate(ly)

**Beg** = Beginning

**Cont** = Continue(ity)

**C8B** = Slip next 4 stitches onto cable needle and leave at back of work. K4, then K4 from cable needle.

**C8F** = Slip next 4 stitches onto cable needle and leave at front of work. K4, then K4 from cable needle.

**K** = Knit

**M1** = Make 1 stitch by picking up horizontal loop lying before next stitch and knitting into back of loop.



**P** = Purl

**Pat** = Pattern

**Rep** = Repeat

**RS** = Right side

**St(s)** = Stitch(es)

**WS** = Wrong side

### INSTRUCTIONS

**Cable Panel** (worked over 32 sts). See Chart.

**1st row:** (RS). P2. K2. P4. K4. P3. K2. P3. K4. P4. K2. P2.

**2nd row:** K2. P2. K4. P4. K3. P2. K3. P4. K4. P2. K2.

**3rd row:** (K2. P2) twice. K4. P3. K2. P3. K4. (P2. K2) twice.

**4th row:** (P2. K2) twice. P4. K3. P2. K3. P4. (K2. P2) twice.

**5th to 8th rows:** As 1st to 4th rows.

**9th and 10th rows:** As 1st and 2nd rows.

**11th row:** (K2. P2) twice. C8F. C8B. (P2. K2) twice.

**12th row:** (P2. K2) twice. P16. (K2. P2) twice.

These 12 rows form Cable Panel.

Cast on 138 sts. **Do not join.** Working back and forth across needle in rows, proceed as follows:

**1st row:** (RS). K4. \*P2. K2. Rep from \* to last 2 sts. K2.

**2nd row:** \*K2. P2. Rep from \* to last 2 sts. K2.

Rep last 2 rows (K2. P2) ribbing with garter edges for 4" [10 cm], ending on a 1st row.

**Next row:** (WS). K2. (Rib 10 sts. M1) twice. Rib 42 sts. (M1. Rib 10 sts) twice. Rib 32 sts. (M1. Rib 10 sts) twice. K2. 144 sts.

Proceed in pat as follows:

**1st row:** (RS). K2. \*Work 1st row Cable Panel. P2. (K2. P2) 5 times. Rep from \* once more. Work 1st row Cable Panel. K2.

**2nd row:** K2. \*Work 2nd row Cable Panel. K2. (P2. K2) 5 times. Rep from \* once more. Work 2nd row Cable Panel. K2.

These 2 rows form ribbing between Cable Panels. Cable Panels are now in position.

Cont in pat until work from beg measures approx 57" [144.5 cm], ending on a 9th row of Cable Panel Pat.

**Next row:** (WS). Pat 12 sts. \*(Work 2tog. Pat 9 sts) twice. Pat 32 sts. Rep from \* once more. (Work 2tog. Pat 9 sts) twice. Pat to end of row. 138 sts.

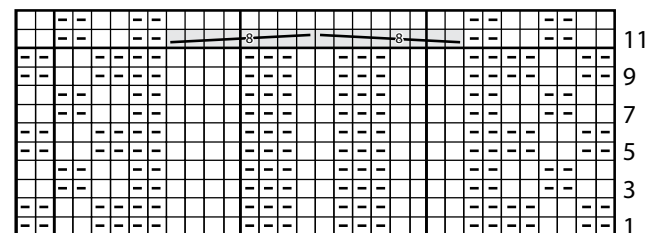
**1st row:** (RS). K4. \*P2. K2. Rep from \* to last 2 sts. K2.

**2nd row:** \*K2. P2. Rep from \* to last 2 sts. K2.

Rep last 2 rows for 4" [10 cm], ending on a 2nd row.

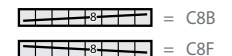
Cast off in ribbing.

Cable Panel



### Key

- = Knit on Rs rows.  
Purl on WS rows.
- = Purl on RS rows.  
Knit on WS rows.



Start Here