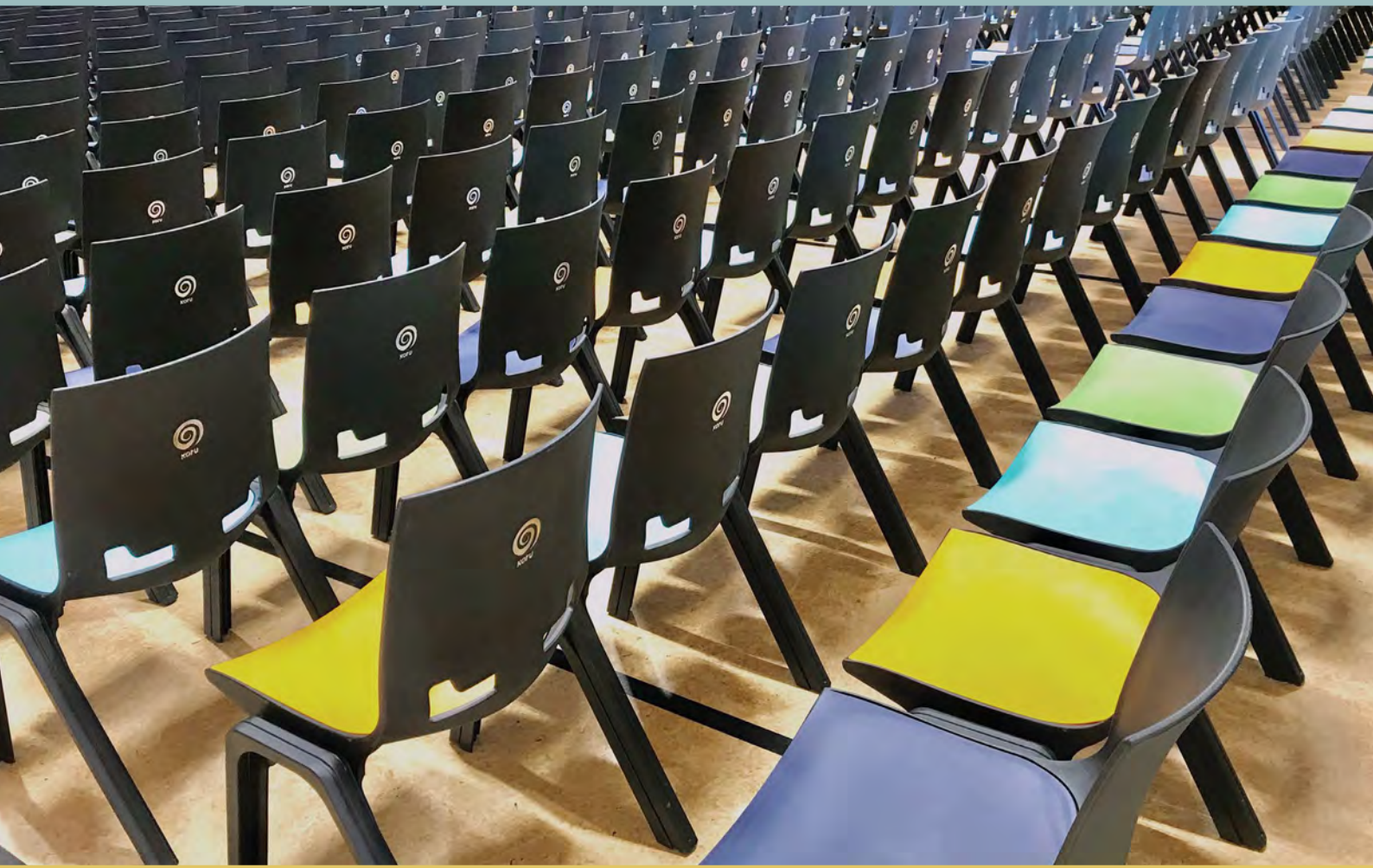


scholar



**SCHOOL FURNITURE
FOR INNOVATIVE
LEARNING
ENVIRONMENTS**



Transform learning spaces with our range of innovative and exciting educational furniture

Encourage creativity, collaboration and motivation in the classroom with our fantastic range of innovative furniture, specifically tailored for education. Our range includes student desks, chairs, tables, classroom storage, collaboration furniture, book display, along with furniture for libraries and staff rooms.

Scholar Furniture is a New Zealand owned and operated business with showrooms located in Auckland, Hamilton and Tauranga. Whether you need a complete fit-out or just a few items to give your classroom a lift, we can help.

Let's talk about collaborative learning spaces. We are here to listen

We take the time to sit down and discuss your learning vision and ideal pedagogy so we can achieve your optimum classroom design. Whether you are making the switch to an ILE classroom or just need a few items to give your classroom a lift, we are more than happy to help.

In this catalogue you will find a selection of our popular education furniture, visit our website for our full range.

0800 453 730 | sales@scholarfurniture.co.nz | www.scholarfurniture.co.nz

TABLE GROUP TABLES



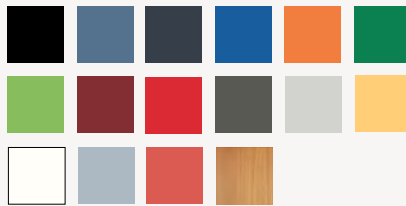
JELLYBEAN

+ 4 x Comet Ottomans

The perfect teachers table, working with 3 or 4 students at a time for targeted learning.

- Frame options: Charcoal, Black or Silver
- Four heights available
- 18mm Melteca table top
- Also works extremely well with a whiteboard top (available on request)

W 1800 x D 1200 x H 565, 625, 675 or 725



Colours for Jellybean, Rectangular, Honeycomb, Puddle, Drip Tables and Lab Benches



HONEYCOMB

Honeycomb is the perfect table for those activities and projects that require group thinking and participation.

- Frame options: Charcoal, Black or Silver
- Plastic plugs in feet to protect floors
- 18mm Melteca table top
- Three leg heights available

Diameter 1200
Leg H 565, 625 or 685

Refer to Jellybean for colour options



PUDDLE

Designed for 1 teacher and 6 student positions - ideal for teacher-led group activities.

- Frame options: Charcoal, Black or Silver
- Plastic plugs in feet to protect floors
- 18mm Melteca table top
- Three heights available

W 1800 x D 1200 x H 565, 625 or 685

Refer to Jellybean for colour options



DRIP

Great group table for collaborative learning - available in a rainbow of coloured tops.

- Frame options: Charcoal, Black or Silver
- Plastic plugs in feet to protect floors
- 18mm Melteca table top
- Three heights available

W 1800 x D 1200 x H 565, 625 or 685

Refer to Jellybean for colour options

**“all tables
available as
kneelers”**

TABLE GROUP TABLES



RECTANGLE TABLE 1200 x 600

+ 2 x Cadet or Form Chairs

A durable and practical table for group activities in the classroom.

- Frame options: Black or White
- Plastic plugs in feet to protect floors
- Can group together to create a larger shared table
- H 730

Refer to Jellybean for colour options (previous page)



Cadet Chair



Form Chair

“ask
about our
whiteboard
top options”



LUNAR TABLE 1200

+ 4 x Cadet Chairs

The Lunar Table is the perfect fit for breakout spaces or group learning areas.

- Black frame with white or oak top
- No pre-drilled holes in top
- Drill required for assembly

Top - Diameter 1200 x 25 thick
Base - Diameter 700
Total Height - 750



“ideal for
breakout
spaces in
your learning
centre”



LAB BENCH

The Lab bench is a popular must-have table for modern learning group activities that require standing or stools.

- Hard-wearing 18mm thick Melteca tops
- Sturdy frame legs with robust bracing for added strength

W 1200 x D 600 x H 900
 W 1200 x D 1200 x H 900
 W 1500 x D 900 x H 900

NB. 800 H also available, suitable for primary schools
 Refer to *Jellybean* for colour options (previous page)



TITAN STOOL

The Titan stool is an exciting fun science / art stool designed with stability in mind.

- Stackable, to 6 chairs high
- Fully welded silver powder coated frame
- Blue rubber feet to protect flooring

Base - W 485 x D 495. Seat - W 360 x D 365
 Total Height - 660

NB. 550 stool available to pair with the 800 H Lab Bench



“lab + titan
- the perfect
combo”

Lab Bench + Titan Stool

Combo deals are the most cost effective option and we've paired items that we know work perfectly together.

COMBO DEAL 1

W 1200 x D 600 x H 900 with a
 Porcelain Whiteboard top
 and 2 Titan stools

COMBO DEAL 2

W 1200 x D 1200 x H 900 with a
 standard 18mm Melteca top
 and 4 Titan stools

COMBO DEAL 3

W 1500 x D 900 x H 900 with a
 standard 18mm Melteca top
 and 6 Titan stools



CHAIRS



CADET

Cadet is super durable and versatile, perfect for the classroom or general school environment.

- Stackable and easy to clean
- Suitable for both indoor & outdoor use
- Different seat heights available
- 10 year warranty

W 350 x D 410

Seat H 340, 400 or 460 (460 in charcoal only)



TITAN

An ever-popular classroom chair that is lightweight and durable - withstands the toughest treatment.

- One-piece lightweight construction
- Stacks up to 12 chairs high
- Ergonomic design keeps spine in healthy posture-friendly position
- 10 year warranty

Seat H - 310, 350, 380, 430 or 480



FILA

Fila is a multi-purpose chair, ideal for assembly halls, classrooms, events, and as a general all-purpose chair.

- Easy 'ready-link' interlocking legs
- Stackable to 10 chairs high
- Hard-wearing polypropylene shell
- Plush fabric seat options available
- 10 year warranty

W 560 x D 520 x H 840 x Seat H 470



CONNECT

Connect brings unity, color and dynamism to an area thanks to its eye-catching design and bright colour options. The Connect chair is the easiest linking chair on the market and an ideal choice as a mass public seating option.

- Comfortable and sleek seat, molded as a one-piece design
- Stacks almost vertical to 14 chairs high
- Extremely low maintenance
- Built-in linking at no extra cost
- Hot stamping on chair available as an optional extra
- 10 year warranty

W 445 x D 410 x H 855 - Seat H 445

Available in a range of colours, fabric option also available



FORM

Form is our go-to classroom chair - practical, versatile and modern. Its curved frame provides superior strength.

- Stackable and easy to clean
- Lightweight polypropylene shell
- Scratch, fade, chip and dent resistant
- 10 year warranty

W 395 x D 385

Seat H 320, 375 or 450





RELOAD

Reload is the evolution in economical conference, waiting and visitor seating. Italian designed, functional and versatile.

- Linking device to easily create rows
- Vertical stacking with no contact between seats
- Mesh back option
- 10 year warranty

W 450 x D 410 x H 720 x Seat H 450

*Available in a range of colours
Fabric option also available*



BREATHE

Versatile, comfortable stool available in two heights and in a rainbow of colours.

- Comfortable 50mm seat upholstery
- Under seat ring for height adjustment
- Lifetime guarantee on gas lift

Stool - W 390 x D 390 x H 420-550
Drafting Stool - W 390 x D 390 x H 620-890

Available in a large range of colours



EON

Eon offers comfort and style with its back curve and modern design - an ideal choice for auditoriums, cafeterias and halls.

- Wooden or upholstered shells available
- Customisable with armrests, writing pads and storage available
- Eon offers comfort with its back curve and holistic body design

Various timber or fabric options available



TITAN STOOL

Hard-wearing and tough. Perfect for high tables in laboratories or the classroom. Complete with foot rail.

- Stackable, to 6 chairs high
- Fully welded silver powder coated frame
- Blue rubber feet to protect flooring
- 10 year warranty

Base - W 485 x D 495. Seat - W 360 x D 365
Total Height - 660



MATA

The flexible back and kick back legs make Mata very resilient to accidental tipping, even from the most active sitter.

- The polypropylene shell will retain its shape even after being flexed back
- Easily stackable up to 5 high
- 10 year warranty

W 430 x D 415 x Back H 430 x Seat H 650



MATA SECRETARIAL

Ideal for active users where a wide variety of different people need to sit for short or extended periods of time.

- Tough polypropylene shell
- Optional seat pad • Gas lift
- Suitable for IT or breakout rooms
- 10 year warranty

W 430 x D 415 x Seat H 390 - 520



ACTIVE SEATING



LIPS

Lips is a rocking pouffe that assures a gentle motion during a creative meeting or in a focused individual session. By activating muscles, it supports active sitting by requiring minimum effort of the user to move. The energizing form supports free thinking in meetings where brainstorming takes place.

- Lightweight, easy to move around & carry
- Carefully considered dimensions to allow both adults & children to use
- The base is made of 3mm beech plywood, cut & processed in CNC, then pressed & molded

W 925 x D 430 x H 435

Available in a range of fabric options

“our active seating range helps children stay focused & burns energy”



JARI

The Jari is ideal for the classroom. The active motion of the rotating convex base keeps students focused and on task.

- Durable and lightweight
- Polypropylene seat frame & base with fabric convex seat
- Gas height adjustable
- 10 year warranty

Diameter 305 x H 400 - 490



MOGOO

The Mogoo octagonal stool is a semi-sitting stool designed to promote dynamic & active seating. Designed to fit fun & interactive spaces, Mogoo allows users to tilt & swivel with its rounded base & optimal support surface.

- Tilt & swivel in all directions
- Octagonal stool top
- Very easy to move around - lightweight with a handling groove under the seat
- 300mm diameter base with anti-slip TPE rubber for excellent floor grip
- Mogoo can be hung from a desk top to keep off the ground when not in use
- Padded seat with a charcoal base and four eye-catching colour rings to choose from

Diameter 300 x Seat H 310, 385, 460 or 535



SOFT SEATING



YOYO

YoYo brings movement and life to spaces and is a perfect addition for libraries, classrooms, study areas and social spaces.

- The tumbler base & gentle movement activates muscles to support active sitting
- Easy to move around weighing 3.5kgs
- Lively, versatile and contemporary
- 10 year warranty

Diameter 410 x H 460

Three colours available as shown above, with black PU leather base



COMET

Comet is a compact option designed to add comfort, colour and fun to areas such as libraries, common areas and study areas.

- Configure in clusters or stand alone
- High quality foam cushioning & a solid hardwood frame
- 5 year warranty

Diameter 430 x H 400



HADY

Simplicity meets functionality - a great, comfortable chair for staffroom, offices or waiting areas.

- High density soft pile foam
- Available with chrome sled base, chrome 4 star base or timber 4 legs
- 5 year warranty (excluding upholstery)

W 600 x D 615 x H 840-855 x Seat H 450-465

Upholstered in a fabric of your choice



FINCHLEY

1 Seater & 2 Seater

Finchley is a sophisticated and contemporary style soft seating option.

- Great addition to reception areas, libraries, offices and staffrooms
- Presenting a stylish and professional image, Finchley is formal yet comfortable
- Upholstered in charcoal zigzag fabric with extra strong iron leg frame in black
- Delivered assembled
- 10 year warranty

1 Seater - W 820 x D 760 x H 720 (Seat H 400)

2 Seater - W 1260 x D 760 x H 720 (Seat H 400)

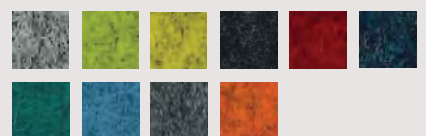


GRANDSTAND 2 TIER

The Grandstand modules provide tiered seating for anything from quick meetings and presentations to relaxation.

- Available in 2 & 3 Tiers - mix & match!
- 10 year (frame), 5 year (fabric) warranty

W 1100 x D 900 x H 900



SOFT SEATING

“great to create a cozy corner in a classroom or incorporated in your student centre”



STAR SERIES

The unique and modular design of Star allows for a number of different layout options to promote collaboration and creativity in the workplace, school or university making it a versatile, multi-function educational piece of furniture.

- Modular options to optimise use of space
- Promotes communication, learning & creativity
- Heavy duty inner frame construction
- High density soft pile foam
- Optional contrasting upholstery available
- 5 year warranty (excluding upholstery)

Available in a range of colours & fabric options
Size variations available on request



MODULUS

Configure in clusters for collaborative group learning, or separate for quiet thinking and focus.

- Configure in clusters or stand alone
- High quality foam cushioning & a solid hardwood frame
- Available in two sizes, mix & match sizes
- 5 year warranty

Small - W 900 x D 600 x H 430
Large - W 1800 x D 600 x H 430



4U

Encouraging socialisation in shared spaces. Use on its own or two side by side.

- Backrest support with adjustable height
- Colourful, comfortable and friendly
- Great for use in libraries, common spaces or waiting areas

W 1400 x D 1400 x H 490

Available in a range of colours
Available in a range of fabric options



CUBIC OTTOMAN

Cubic is a compact option designed to add comfort, colour and fun to areas such as libraries, common areas and study areas.

- Configure in clusters or stand alone
- High quality foam cushioning & a solid hardwood frame
- 5 year warranty

W 460 x D 460 x H 430



DESKS



AZTEC COLLECTION

Aztec Fixed Top, Aztec Box, Aztec Fixed Top Tote, Aztec Lift Top Tote Desks

The Aztec range is super simple and practical, the perfect desks for the classroom.

- Frame options: Charcoal, Black or Silver
- 32mm diameter legs
- Three leg heights available

W 600 x D 480
Leg H 625, 675 or 725



Colours for Aztec, Study & College Desks



FOLDING EXAM

Quality and affordability combine to make this a cost-effective solution ideal for exam set-up in schools and universities.

- 18mm thick grey Melteca top
- Round tubular legs in silver powder-coated finish
- Easy to store

W 600 x D 450 x H 725



STUDY

Enclosed study desk - great for individual study and focus.

- Frame options: White, Charcoal, Black, or Silver (more available on request)
- 25mm square legs
- Tops also available in Tawa or Beech
- Three leg heights available

W 800 x D 600
Leg H 625, 675 or 725

Refer to Aztec Collection for colour options



COLLEGE

Versatile and fun. Mix and match coloured tops for an inspired learning environment.

- Frame options: White, Charcoal, Black, or Silver (more available on request).
- 50 x 25 heavy duty frame
- Tops also available in Tawa or Beech
- Three leg heights available

W 600 x D 480
Leg H 625, 675 or 725

Refer to Aztec Collection for colour options



STUDENT

The Student Desk is practical and affordable, ideal as an everyday desk for schools.

- Grey top with a metal silver frame.
- Simple assembly required
- Pairs well with the Cadet Chair
- 5 year warranty

W 630 x D 600 x H 725



STORAGE



MOBILE TOTE STORAGE

Mobile storage devices for around the classroom to assist with storing, stacking, drying and many more uses.

- 16, 24, 32 & 36 Totes available
- Easily movable on castors
- Tote trays sold separately
- Metal frame

16 Tote - W 600 x D 420 x H 800
 24 Tote - W 900 x D 420 x H 800
 32 Tote - W 1200 x D 420 x H 800 (not pictured)
 36 Tote - W 1355 x D 550 x H 720



Colours for Mobile Totes & Art Supply Unit



TEACHERS MOBILE

A handy, lockable pod to aid teachers with storage and to create a mobile work surface.

- Comes with two gang locking drawers & lockable cupboard
- Ideal for storing laptops and iPads
- Castors for easy mobility

W 500 x D 670 x H 980



MOBILE DRYING RACK

Two sizes available - handy mobile rack to dry student artwork.

- Drying rack consisting of 30 or 40 racks
- Ideal for easy drying of artwork in the classroom or art room
- Available in black frame
- On castors for easy mobility

W 1000 x D 350 x H 1500
 Individual Rack - W 450 x D 330



ART SUPPLY UNIT

Stylishly store your art supplies and artwork to keep your classroom neat and tidy.

- Sits on twin caster wheels for ease of moving around the classroom
- Multiple colour options available

W 1000 x D 600 x H 600

Refer to Mobile Tote for colour options



A SERIES LOCKERS

Wide enough to store a backpack, the A Series lockers are perfect for schools.

- Made from strong polyethylene
- A great innovative & long-lasting alternative to the traditional metal & wood lockers
- 15 year warranty

A wide range of colour choices available
 Available in a variety of sizes

PRESENT- ATION



GLASSBOARDS

High gloss, ultra smooth, dry erase surface with frameless polished edges

- Stylish magnetic glass writing board
- Comes with 4 x glassboard magnets
- Additional magnets are available
- Lifetime surface guarantee
- Available in Black or White

W 600 x H 900 W 1200 x H 1500
W 900 x H 1200 Diameter 900
W 900 x H 1500 Diameter 1200



WHITEBOARDS

Wall mounted or mobile whiteboards.

- Extra-thick writing surface for a long life
- Magnetic surface
- Stylish brushed aluminum frame
- 5 year surface warranty
- Wall mounted - lightweight & easy to hang
- Mobile - robust steel frame is on lockable 50mm castors for ease of moving & securing
- Mobile - Rotates 360 degrees

Whiteboard sizes

W 900 x H 600
W 900 x H 900
W 1200 x H 900
W 1200 x H 1200
W 1500 x H 1200
W 1800 x H 1200
W 2400 x H 1200 (wall mounted only)



TEACHING STATION

Whiteboard / Pinboard / Book Display

- Double sided
- Magnetic whiteboard
- Multiple top colour options
- Whiteboard / Pinboard combo
- Whiteboard / Book Display combo
- Whiteboard / Whiteboard combo



W 910 x D 500 x H 1245



TERM PLANNER

These easy to use school term planners are a must for every school.

- Easily plan major events, staff meetings, school goals, assemblies, school trips, galas or any other events throughout the term
- Laser-etched, easy clean whiteboard
- 1, 2 or 4 term planners available

1 Term - H 600 or 900 x W 1200
2 Term - H 1200 x W 1200
4 Term - H 1200 x W 2400

OFFICE & STAFFROOM



ELEVATE HEIGHT ADJUSTABLE DESKS

Single or Shared Desks in Electric or Manual Height Adjust

Standing up at work is more than just a trend - it is also a healthier option. Sit-stand desk systems are becoming more and more popular in offices, and for good reason.

- Sit to stand vertical height adjustment range
- Strong, durable, retractable steel frame
- Large leveling feet provide stability
- Commercial grade 25mm top
- 10 year warranty

Available in white or black frames with white or oak tops

- Single - W 1200 x D 600 x H 650 - 1250
- Single - W 1500 x D 800 x H 650 - 1250
- Single - W 1800 x D 800 x H 650 - 1250
- Shared - W 1500 x D 800 x H 710 - 1120
- Shared - W 1800 x D 800 x H 710 - 1120

“create a staffroom or office space that inspires a good work day, everyday”



ACTIVE CHAIR

A comfortable and stylish option for the office. This is a top quality, versatile chair, ideal for intensive desk-based tasks.

- Large molded foam seat with black base & mesh back
- Seat slide for people of different heights
- Gas lift seat height adjustment
- Tension adjustable locking recline mechanism
- 10 year warranty

W 510 x D 510 x Seat H 440 - 530



CUBE DESKS

Enclosed or Straight Leg variations. Desk & Leaner height options.

The Cube desking range is perfect for individual offices and/or team based work areas.

- Strong, durable steel frame ends
- 3 desk sizes available
- 10 year warranty
- H 725

W 1200 x D 600, W 1500 x D 800 or W 1800 x D 800

Available in white or black frames with white or oak tops. Custom coloured tops available on request - over 50 colours to choose from!





MILANO TAMBOURS

Tambour door cabinet perfectly blends generous storage capacity with modern design aesthetic. Ideal for lateral filing, A4/Foolscape and/or general office storage.

- Strong commercial grade steel construction
- Clever articulated curtain design doors allow easy accessibility while ensuring open doors do not impede floor space when open
- Fully lockable doors
- Unit contains adjustable shelves
- Optional shelf dividers
- Lifetime warranty

W 900 x D 450 x H 1020
W 900 x D 450 x H 1200
W 900 x D 450 x H 1980

W 1200 x D 450 x H 1020
W 1200 x D 450 x H 1200
W 1200 x D 450 x H 1980

Available in white or matte black



MILANO MOBILE

A stylish storage solution for your school offices or classrooms.

- 5 castors underneath including middle castor for anti-tilt
- Lockable
- Lifetime warranty

Slimline - W 300 x D 500 x H 600
Regular - W 390 x D 500 x H 600

Available in white or matte black



EIFFEL CONFERENCE

Eiffel is a sleek and smooth looking table with a large top making it ideal for conferences or meetings.

- Heavy duty top
- Strong metal frame
- Feet to protect flooring
- Wide legs for stability
- 10 year warranty

W 2400 x D 1200 x H 745

White or oak tops available



FLIP TABLE

Gravitate Flip Tables are an easy and practical space saver. Just roll it out for that impromptu meeting or classroom activity.

- Heavy duty 25mm top & durable PVC edge
- Stainless steel frame
- Durable and easy to use - one handed flip mechanism - simply pull and tilt

W 1800 x D 900 x H 565, 625 or 685

White or oak top with black & stainless steel legs

“this is just a selection of our products, visit our website for our full collection”

www.scholarfurniture.co.nz

scholar

INNOVATIVE

FURNITURE

FOR

EDUCATION

0800 453 729 | sales@scholarfurniture.co.nz
www.scholarfurniture.co.nz



@scholarfurniture



@scholarfurniture.co.nz