

Sentinel software is otherwise known as CES or what was Geller Touch.

SENTINEL TOUCH SCREEN SOFTWARE

SOFTWARE V8.6



Integrates
With Widely
Handheld &
Software!

- Transmit orders directly to the kitchen in real-time!



Sentinel software works as a stand-alone application or can be fully networked offering a complete EPOS solution in a single or multi-terminal environment



Widely WF43 HANDHELD WITH WaveSoft 2.0 SOFTWARE

The Widely WF43 Handheld terminal is a low cost, wireless mobile solution for improving business efficiency.

Improve order taking accuracy and eliminates lost, partial and incorrect orders.

- Take the order at the table and wirelessly transmit it to the kitchen in real-time!

Allow staff to focus more on customer service, improving the customer experience.

Eliminate delays by processing payment at the table instead of at the POS station. Expand the coverage of existing POS systems, covering outdoor seating areas over a WiFi network.

- Windows Mobile 6.5.
- 4.3" WVGA Touch Screen Display.
- Proven Wi-Fi Reliability.
- Long Battery Life with Smart Power Management.



Sentinel Touch Software

Sentinel software works as a stand-alone application or can be fully networked offering a complete EPOs solution in a single or multi-terminal environment.

Features & Benefits

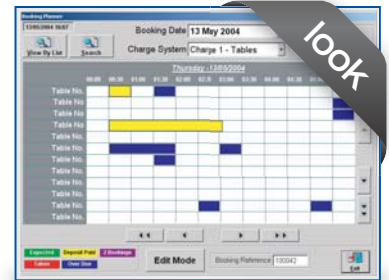
- Easy to set-up and use, requiring minimal training.
- Inbuilt training mode.
- Multiple tender types within the same transaction.
- Card detail entry via magnetic card or keyboard.
- Credit Card authorisation (EFT).
- Foreign currency handling.
- Extensive Customer Management module.
- Comprehensive Account Sales Ledger Module.
- Cash declaration facilities.
- Float Entry.
- X & Z report for each terminal.
- Consolidated X & Z reports



for networked terminals.

- Multiple prices for items.
- Alternative product identifier codes for products (multiple barcodes).
- Detailed recipes and analysis.
- Discounts via customer or item, by % amount or fixed.
- Support for single and multiple kitchen printers.
- Multiple definable screens for ease of one touch item selling.
- Advanced booking module for charge sheets.
- Extensive refund and void facilities.
- Comprehensive transaction monitoring and analysis.

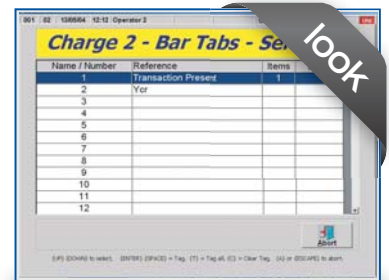
Sentinel 8.6 Screen Shots & Features



- Restaurant Table Booking.



- User Definable Screens.



- Instant Bar Tab or Table Balance View.

SENTINEL 8.6 FEATURES AT A GLANCE

Sentinel software is otherwise known as CES or what was Geller Touch.

Hospitality

- 25 Check Tracking Files, with on-screen list.
- Clerk Interrupt with per clerk balance display.
- Clerk Layaway multiple sales stored per clerk.
- Condiment List or text prompts.
- Menu List for easy operator selection
- Recipes for update of PLU's Sales.

Retail

- Barcode scanning for unlimited products.
- Comprehensive Promotions/Mix & Match.
- Account management through to Sage.
- Customer Loyalty with % or points offers.
- EFT Card Reader
- Single field stock entry, with adjustments.
- Alternative bar code per product.

Specialist Markets

- Questions and processing of answers i.e. date range will calculate No. of Days due for hire.
- Serial number tracking with customer entry.
- Credit note issuance and Redemption.
- Reason code reporting for discount, refunds paid outs etc.
- Multiple VAT rates, with VAT analysis reporting.

SAM4S TOUCH SCREENS



Sam4s SPT-3700 Touch Screen



Sam4s SPT-4801 Touch Screen

YOUR LOCAL SENTINEL DEALER IS :-



SENTINEL

Sentinel software is otherwise known as CES or what was Geller Touch.