

CLOTHING SIZE GUIDES

These are general size guides for all Dubarry products



Women's clothing

EU	UK	US	BUST		WAIST		HIPS	
34	8	4	32in	81cm	25in	64cm	33in	84cm
36	10	6	34in	86cm	27in	69cm	35in	89cm
38	12	8	36in	91cm	29in	74cm	37in	94cm
40	14	10	38in	97cm	31in	79cm	39in	99cm
42	16	12	40in	102cm	33in	84cm	41in	104cm
44	18	14	42in	107cm	35in	89cm	43in	109cm
46	20	16	44in	112cm	37in	94cm	45in	115cm

Headwear

	cms	Cap size	US cap size
S	55	6 ³ / ₄	6 ⁵ / ₈
M	57	7	7 ¹ / ₄
L	59	7 ¹ / ₄	7 ³ / ₈
XL	61	7 ¹ / ₂	7 ⁵ / ₈

How to measure your head for the best fit

This applies to both men and women

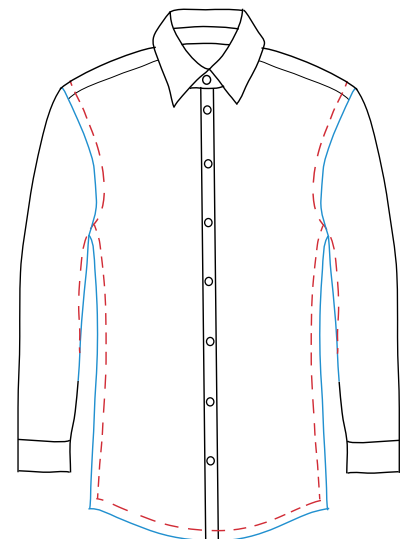
- 1 Place a measuring tape around your head at mid-forehead and just above your ears.
- 2 Measure in centimetres and check your size on the chart.



Men's shirting

			S	M	L	XL	2XL	3XL
Collar	in		14 ¹ / ₂ - 15	15 ¹ / ₂ - 16	16 ¹ / ₂ - 17	17 ¹ / ₂ - 18	18 ¹ / ₂ - 19	19 ¹ / ₂ - 20
	cm		37 - 38	39 - 41	42 - 44	45 - 46	47 - 48	49 - 50
Chest	Euro	in	44	46	48	50	52	54
		cm	112	117	122	127	132	137
	US	in	46 ¹ / ₂	48 ¹ / ₂	50 ¹ / ₄	52 ³ / ₄	55	57 ¹ / ₂
		cm	118	123	128	134	140	146
Waist	Euro	in	40	42	44	46	48	50
		cm	102	107	112	117	122	127
	US	in	43 ³ / ₄	45 ¹ / ₄	47 ¹ / ₄	49 ¹ / ₂	54 ³ / ₄	57
		cm	110	115	120	126	139	145
Length	Euro	in	30 ³ / ₄	31	32	32 ³ / ₄	33 ¹ / ₂	34
		cm	77	79	81	83	85	87
	US	in	32 ¹ / ₂	33 ³ / ₄	34	35	35 ¹ / ₂	36 ¹ / ₂
		cm	82.5	84.5	86.5	88.5	90.5	92.5

- We strongly recommend that the best way to select your size and fit, from these measurements, is to measure a shirt in your wardrobe that fits you well. For chest and waist measure on the flat and then double it.
- These actual shirt measurements include the appropriate additions to your body measurements to allow for ease of movement.



■ US Regular
■ Euro Regular

Men's clothing

	CHEST	
XS	33 - 35in	84 - 90cm
S	36 - 38in	91 - 98cm
M	39 - 41in	99 - 104cm
L	42 - 44in	107 - 112cm
XL	45 - 47in	114 - 119cm
2XL	48 - 50in	122 - 127cm
3XL	51 - 53in	130 - 135cm

	WAIST						
in	30	32	34	36	38	40	42
cm	76	81	87	92	97	102	107