

HOW TO ASSEMBLE YOUR DUAL HELIX SPINNER

Parts

These are the parts that should come in the box:



Installation: Pole Anchoring

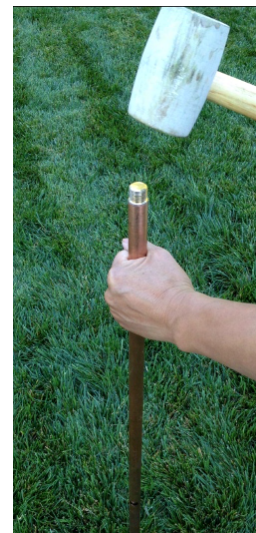
STEP 1.

Gather these parts: one pole with beveled edge and three support stakes.



STEP 2.

Hammer the main pole into the ground using a **Rubber Mallet** until the black line touches the ground (about 1 ft. deep).



* We recommend you use blue Loctite thread locker if in windy area

Installation: Pole Anchoring

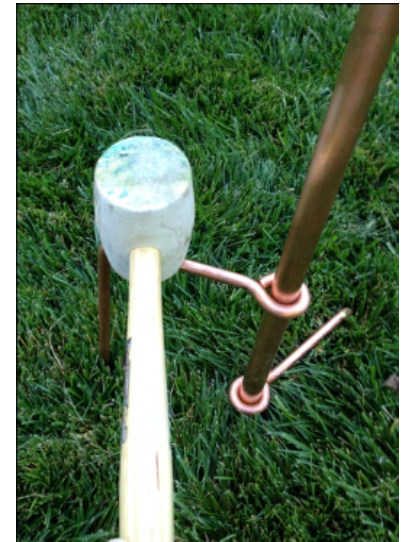
STEP 3.

Slide a support stake into the main pole and hammer it into the ground.



STEP 4.

Slide a second support stake into the main pole. Position it ~120 degrees away from the first stake and hammer it into the ground.

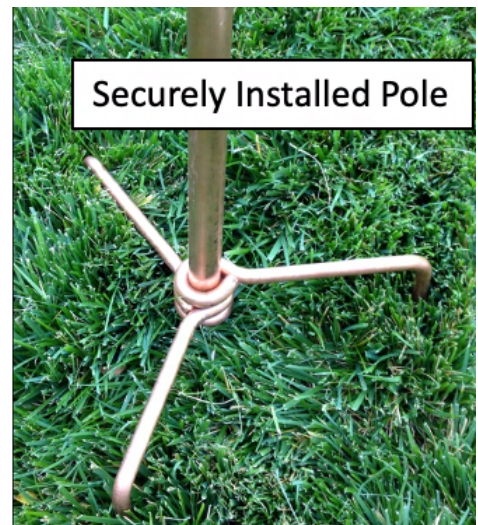


STEP 5.

Slide a third support stake on to the main pole. Position it evenly away from the first two stakes and hammer it into the ground.



STEP 6.

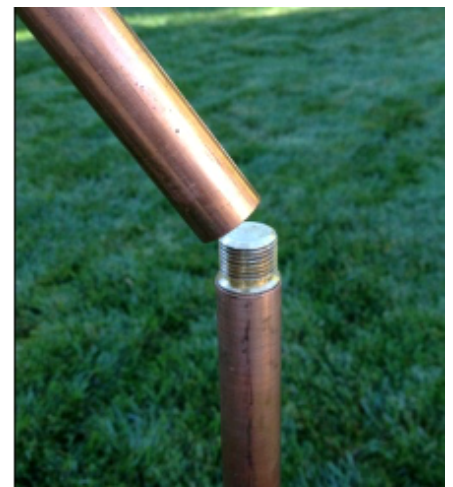


STEP 7.

Take the pole with the trademark "**Stanwood Wind Sculpture**" engraving and connect its female end to the male end of the ground pole. After the poles are connected, the trademark should be legible from the bottom up.

*Check all screw tightness periodically, and tighten if needed

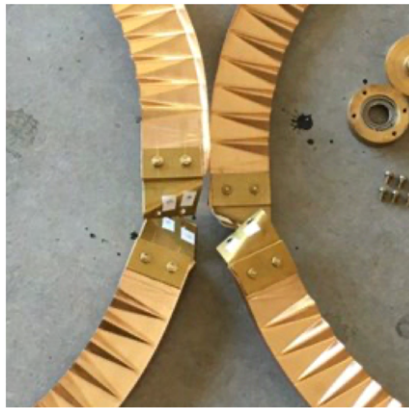
Stanwood Wind Sculpture ↑



Installation: Dual Helix Spinner

STEP 8.

Align two halves of the spinner with the bent edges facing upward.



STEP 9.

Align the numbers 1 & 2 at the ends of the copper strips with those on the bearing housing. Don't forget to attach spring washers.



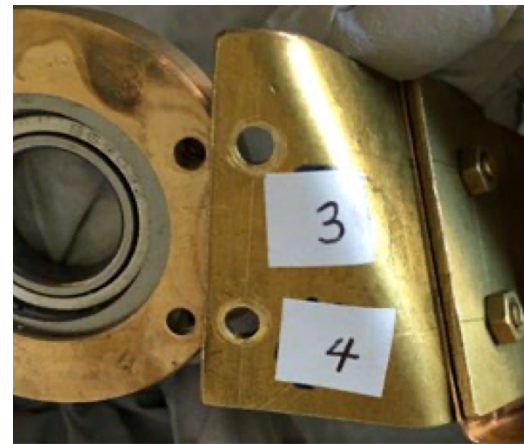
STEP 10.

Attach copper strips with the bearing housing using provided brass screws and spring washers.



STEP 11.

Align the numbers 3 & 4 at the ends of the copper strips with those on the bearing housing. Don't forget to attach spring washers.



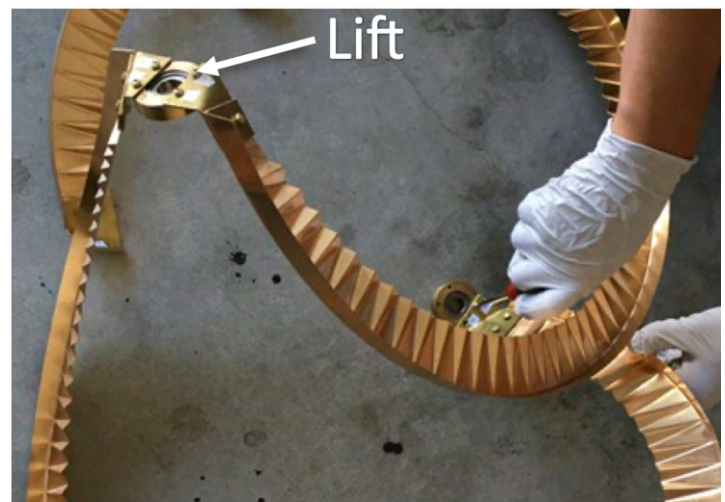
STEP 12.

Attach copper strips with the bearing housing using provided brass screws and spring washers.



STEP 13.

While one person lifts the attached ends of the copper strips, the other person aligns holes 7 & 8 (or 5 & 6).



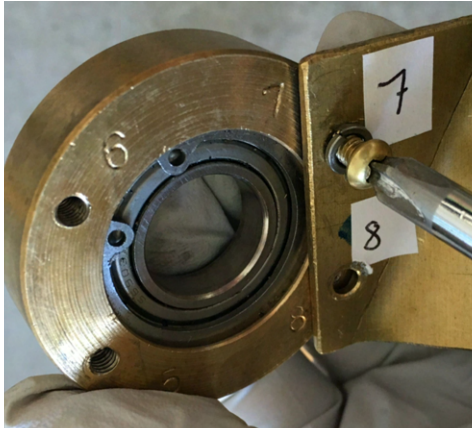
*Check all screw tightness periodically, and tighten if needed

* We recommend you use *blue Loctite thread locker* if in windy area

Installation: Dual Helix Spinner

STEP 14.

Align holes **7 & 8** (or **5 & 6**) with respective positions on the bearing housing and attaches them with screws and springwashers.



STEP 16.

Insert the end of the holding tubing with **exposed threads** into the bearing housing labeled **1, 2, 3, & 4**.



STEP 18.

Partially finished spinner



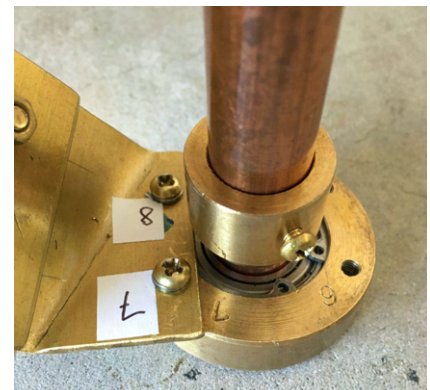
STEP 15.

Set up the spinner holding tubing: Attach two halves of the holding tubing.



STEP 17.

Stretch the spinner so the other end of the holding tubing goes through the bearing housing labeled with **5, 6, 7, & 8**.



STEP 19.

Cover the bearing housing labeled with **5, 6, 7, & 8** by screwing the provided brass nut into the spinner tubing.



*Check all screw tightness periodically, and tighten if needed

* We recommend you use *blue Loctite thread locker* if in windy area

Installation: Dual Helix Spinner

STEP 20.

While one person keeps the spinner stand stable, have the other person attach holes **5 & 6** (or **7 & 8**) to their respective positions on the bearing housing.



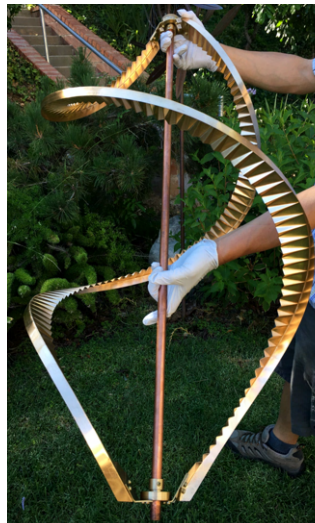
STEP 21.

Finished spinner



STEP 22.

Flip the assembled spinner.



STEP 23.

Align the threaded end of the tubing with the ground support pole.



STEP 24.

Screw the dual helix spinner head into the support pole using two hands.

*Check all screw tightness periodically, and tighten if needed



ANY QUESTIONS PLEASE CONTACT US AT:
service@stanwoodimports.com
sales@orientalhomegarden.com

Tel: (888) 670-5570
 Copyright © Stanwood Imports & Oriental Touch LLC



* We recommend you use *blue Loctite thread locker* if in windy area