



thread & ladle



Lieselotte Shawl

Knitting Pattern by Beatrice Perron Dahlen

www.threadandladle.com

Details

Finished Size

46" wide and 18" deep

54" wide and 22" deep

58" wide and 26" deep

Yarn

Brooklyn Tweed Loft (50 grams/275 yards, 100% Wyoming-grown Targhee-Columbia wool) pictured in Woodsmoke

Yardage

500 (600, 700) yards

Needles

US size 4 (3.5 mm) circular 32 inch or longer

Notions

Markers

Tapestry needle

Gauge

17 sts and 28 rows in 4" in stockinette stitch after blocking



Notes

The perfect beginner shawl and lace project, or a comfort project for the experienced knitter. Shawl is worked from the top down using lifted increases, with a very simple lace worked at the bottom edge. The i-cord bind off gives it a clean finish, though is not as stretchy as some other bind offs. Try working the bind off in a larger needle size if this is an issue, or instead work several rows of garter stitch before casting off. Shawl includes three sizes, the smallest of which should use only 2 skeins of Brooklyn Tweed Loft.

Techniques

Garter Tab Cast On: Cast on 3 sts. Work in garter stitch (knit both sides) for 10 rows. Next RS row, knit 3 sts, turn the work, pick up and work one stitch for each garter ridge, turn work and pick up and knit 3 sts along cast on edge.

I-Cord Bind Off: At the beginning of the row, cast on 3 sts onto left hand needle. K2 (cast on sts), sl1, k1 (shawl st), pass slipped stitch over knit shawl st. Transfer 3 sts from right hand needle back onto the left hand needle. Repeat until all sts are bound off.

Right Lifted Increase: Knit into the back of the stitch in the row below the stitch on the left hand needle.

Left Lifted Increase: Knit into the back of the stitch two rows below the stitch just knitted on the right hand needle.

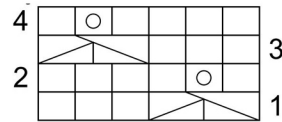
Abbreviations

CO- cast on
 k- knit
 p- purl
 LLI- left lifted increase
 RLI- right lifted increase
 pm- place marker
 pssso- pass slipped stitch over
 sl- slip
 sm- slip marker
 st(s) - stitch(es)
 yo- yarn over

Stitch Guide

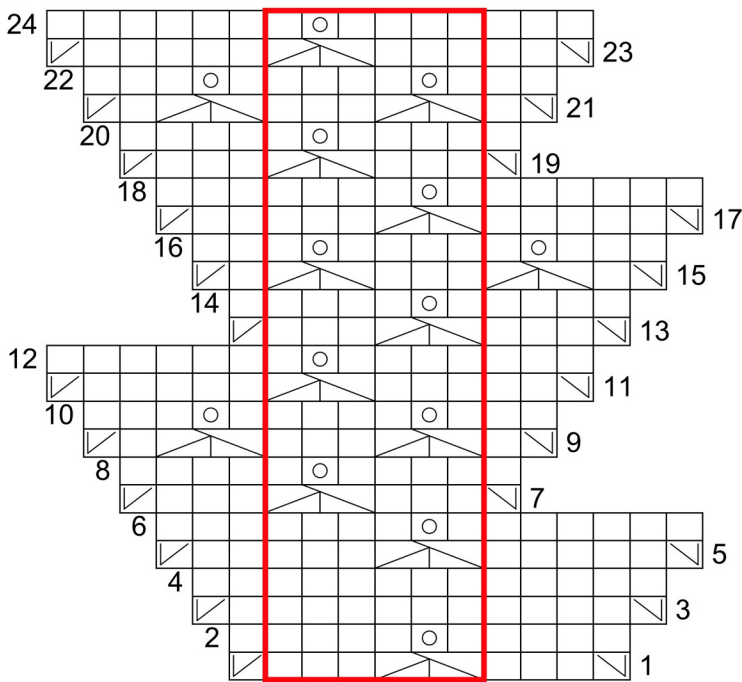
Eyelet Lace (multiples of 6 sts)
 Row 1: *Sl1, k2, pssso, k3. Repeat from * to end.
 Row 2: *P4, yo, p1. Repeat from * to end.
 Row 3: *K3, sl1, k2, pssso. Repeat from * to end.
 Row 4: *P1, yo, p4. Repeat from * to end.

Eyelet Lace Chart



□ RS: k; WS: p
 ○ WS: yo
 ▽ sl1-k2-pssso

Border Chart



□ RS: k; WS: p
 ○ WS: yo
 ▽ RLI
 ▽ LLI
 ▽ sl1-k2-pssso



Pattern Instructions:

Garter Tab Cast On:

CO 3 sts.

Work 10 rows of garter stitch (knit every row).

Next row: K3, turn work, pick up and knit 5 sts along left side (one in each garter ridge), pick up and knit 3 sts along cast on edge - 11 sts total.

Setup row (WS): K3, pm, p1, pm, p3, pm, p1, pm, k3.

Begin Increases:

Row 1 (RS): K3, *sm, LLI, work to next marker, RLI, sm, k3,* repeat between **.

Row 2 (WS): K3, purl across slipping markers, k3.

Repeat these two rows until there are 93 (117, 141) sts between each set of markers - 195 (243, 291) sts total.

Begin Lace Pattern (Uncharted)

Row 1 (RS): K3, *sm, LLI, k3, work Row 1 of Eyelet Lace to next marker, RLI, sm, k3,* repeat between **.

Row 2 (WS): K3, *sm, p1, work Row 2 of Eyelet Lace to 4 sts before next marker, p4, sm,* p3, repeat between **, k3.

Row 3 (RS): K3, *sm, LLI, knit to next marker, RLI, sm, k3,* repeat between **.

Row 4 (WS): K3, purl to last 3 sts, slipping markers, k3.

Row 5: K3, *sm, LLI, k5, work Row 1 of Eyelet Lace to 2 sts before next marker, k2, RLI, sm, k3,* repeat between **.

Row 6: K3, *sm, p3, work Row 2 of Eyelet Lace to 6 sts before next marker, p6, sm,* p3, repeat between **, k3.

Row 7: K3, *sm, LLI, work Row 3 of Eyelet Lace to 3 sts before next marker, k3, RLI, sm, k3,* repeat between **.

Row 8: K3, *sm, p4, work Row 4 of Eyelet Lace to 1 st before next marker, p1, sm,* p3, repeat between **, k3.

Row 9: K3, *sm, LLI, k1, work Row 1 of Eyelet Lace to 4 sts before next marker, sl1, k2, pssso, k1, RLI, sm, k3,* repeat between **.

Row 10: K3, *sm, p3, yo, p1, work Row 2 of Eyelet Lace to 2 sts before next marker, p2, sm,* p3, repeat between **, k3.

Row 11: K3, *sm, LLI, k2, work Row 3 of Eyelet Lace to 5 sts before next marker, k5, RLI, sm, k3,* repeat between **.

Row 12: K3, *sm, p6, work Row 4 of Eyelet Lace to 3 sts before next marker, p3, sm,* p3, repeat between **, k3.

Row 13: K3, *sm, LLI, k3, work Row 1 of Eyelet Lace to next marker, RLI, sm, k3,* repeat between **.

Row 14: K3, *sm, p1, work Row 2 of Eyelet Lace to 4 sts before next marker, p4, sm,* p3, repeat between **, k3.

Row 15: K3, *sm, LLI, k1, sl1, k2, pssso, work Row 3 of Eyelet Lace to 1 st before next marker, k1, RLI, sm, k3,* repeat between **.

Row 16: K3, *sm, p2, work Row 4 of Eyelet Lace to 4 sts before next marker, p1, yo, p3, sm,* p3, repeat between **, k3.

Rows 17-20: Repeat Rows 5-8.

Rows 21-24: Repeat Rows 9-12.

OR Begin Lace Pattern (Charted)

Odd Rows 1-23 (RS): K3, *sm, work Chart to next marker, sm, k3,* repeat between **.

Even Rows 2-24 (WS): K3, *sm, work Chart to next marker, sm,* p3, repeat between **, k3.

Finishing

Bind off using an i-cord bind off. Weave in ends and block.



Get in touch!

www.threadandladle.com
threadandladle@gmail.com

Ravelry ID: Beatrice2009
Twitter & Instagram: @threadandladle