



ARROW SIDE STEP

PART #: TB-T26

FITS: 2005-Up Toyota Tacoma Double Cab



60-120 min



Cutting Not Required



Drilling Not Required

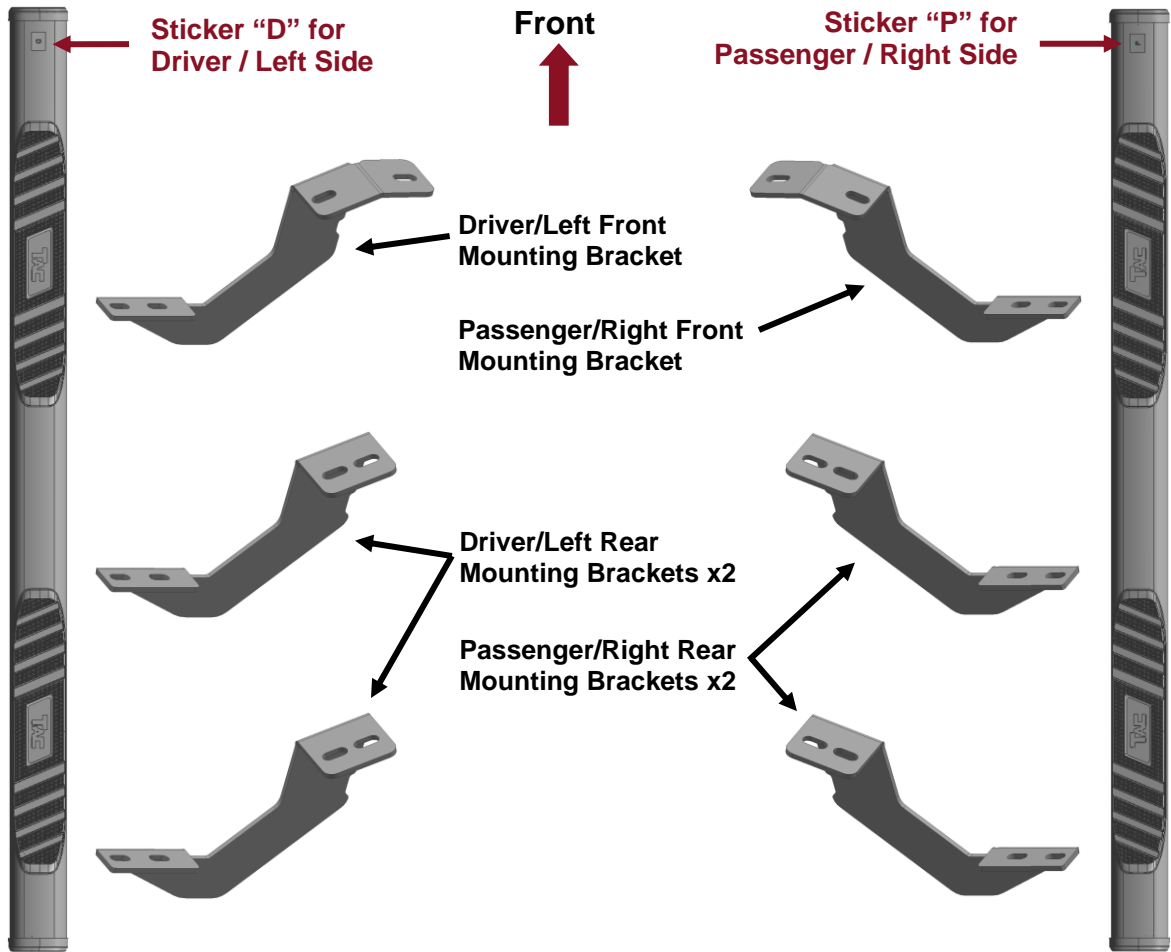
Torque & Tools

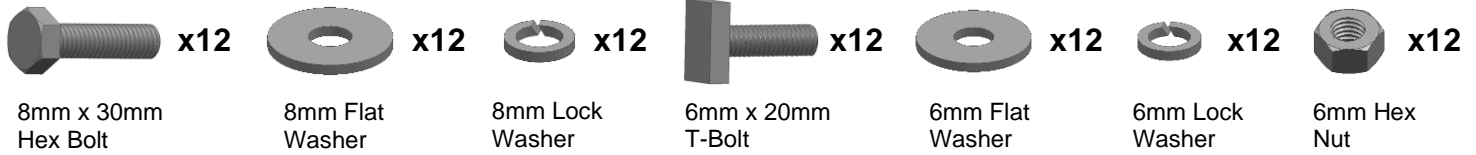
Fastener Size	Tightening Torque (ft-lbs)	Wrench Required		Allen Wrench Required	
			<input checked="" type="checkbox"/> 10mm		<input type="checkbox"/> 4mm
<input checked="" type="checkbox"/> 6mm	<input checked="" type="checkbox"/> 7-8.5		<input checked="" type="checkbox"/> 13mm		<input type="checkbox"/> 5mm
<input checked="" type="checkbox"/> 8mm	<input checked="" type="checkbox"/> 18-20		<input type="checkbox"/> 16mm		<input type="checkbox"/> 6mm
<input type="checkbox"/> 10mm	<input type="checkbox"/> 35-40		<input type="checkbox"/> 18mm		<input type="checkbox"/> 8mm
<input type="checkbox"/> 12mm	<input type="checkbox"/> 60-70				

BEFORE INSTALLATION

REMOVE CONTENTS FROM BOX. VERIFY ALL PARTS ARE PRESENT. READ INSTRUCTIONS CAREFULLY BEFORE STARTING INSTALLATION. ASSISTANCE IS RECOMMENDED.

Part List



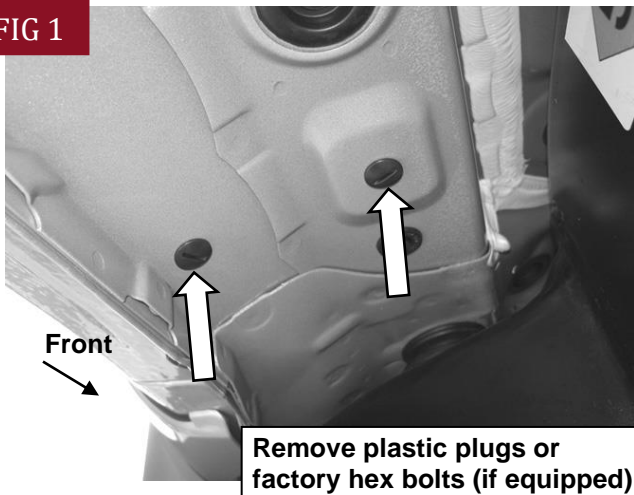


PLEASE NOTE THAT THE FOLLOWING PICTURES ARE BASED ON THE DRIVER SIDE INSTALLATION

STEP 1

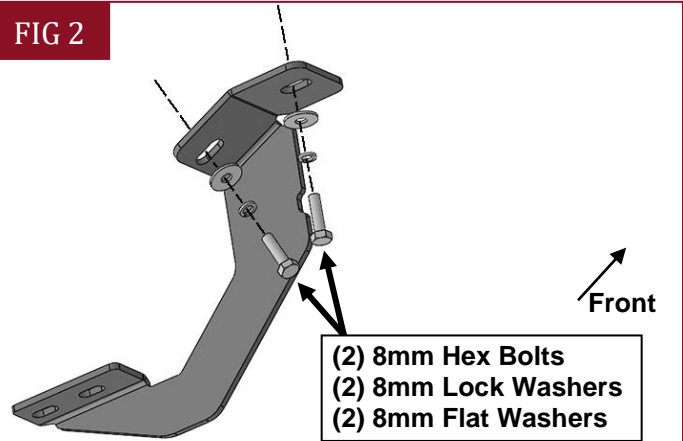
Starting on the Driver/Left front of the vehicle, remove the plastic plugs, (or hex bolts), covering the threaded holes in the body panel, **(Fig 1)**.

FIG 1



(Fig 1) Driver/Left front mounting location

FIG 2



(Fig 2) Attach Driver/Left Front Mounting Bracket to the front mounting location

STEP 3

Move along the body panel to the center mounting location. Select (1) Driver/Left Rear Mounting Bracket. Repeat **Step 2** to install the Mounting Bracket, **(Fig 3 & 4)**. Do not tighten hardware.

FIG 3

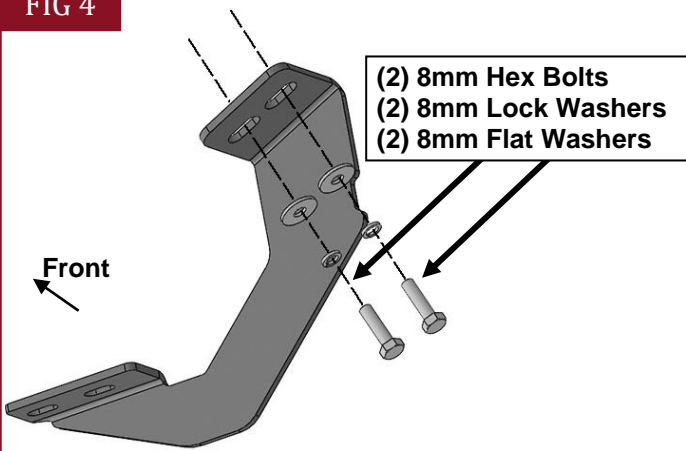


(Fig 3) Driver/Left center mounting location

STEP 2

Select the Driver/Left Front Mounting Bracket. Attach the Bracket to the vehicle with (2) 8mm Hex Bolts, (2) 8mm Lock Washers and (2) 8mm Flat Washers, **(Fig 2)**. Do not tighten hardware at this time.

FIG 4

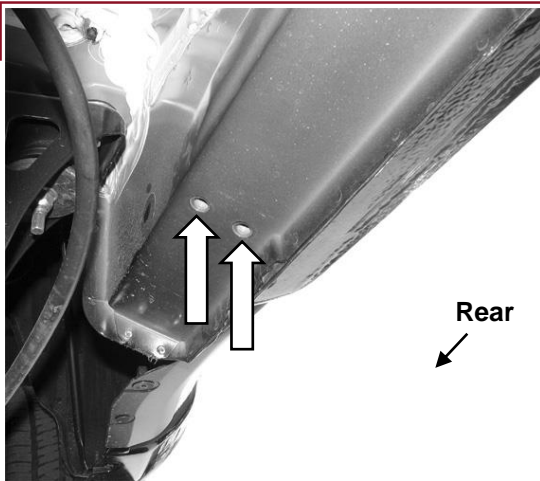


(Fig 4) Attach Driver/Left Rear Mounting Brackets to the center and rear mounting locations.

STEP 4

Continue to the last mounting location at the back of the cab, (Fig 5). Select the remaining (1) Driver/Left Rear Mounting Bracket. Repeat Step 2 to attach the Bracket to the rear mounting location. Do not tighten hardware.

FIG 5

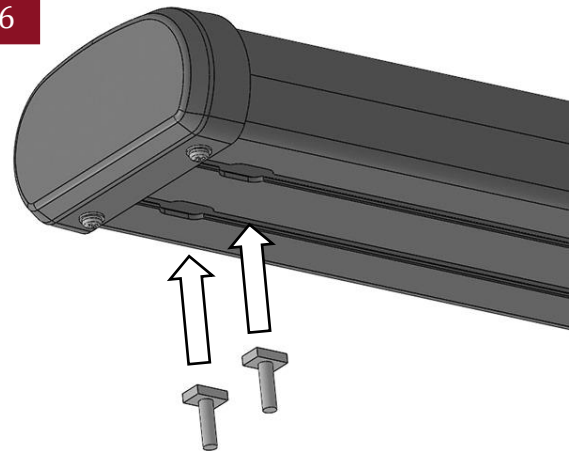


(Fig 5) Driver/Left rear mounting location

STEP 5

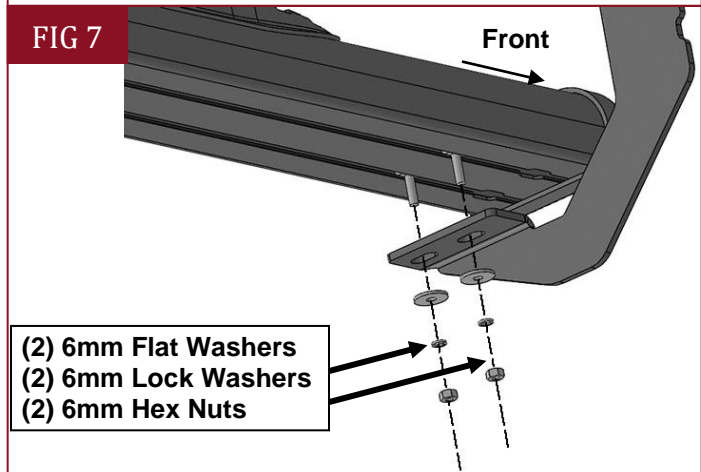
Select the Driver/Left Side Step. **NOTE: The Driver/Left Side Step will have a Sticker "D" on the front.** Insert (6) 6mm T-Bolts into the channels in the bottom of the Side Step, (Fig 6), (3 T-Bolts per channel). Attach the Side Step to the (3) Mounting Brackets with (6) 6mm Flat Washers, (6) 6mm Lock Washers and (6) 6mm Hex Nuts, (Fig 7). Do not tighten hardware.

FIG 6



(Fig 6) Insert (6) 6mm T-Bolts into the channels in the bottom of the Side Step, (3 T-Bolts per channel)

FIG 7



(Fig 7) Attach Driver/Left Side Step to the rear faces of the Mounting Brackets

STEP 6

Level and adjust the Side Step and fully tighten all hardware.

STEP 7

Repeat **Steps 1-6** to attach the Passenger/Right Side Step.

STEP 8

Do periodic inspections to the installation to make sure that all hardware is secure and tight.

Attention

To protect your investment, do not use any type of polish or wax that may contain abrasives that could damage the finish.

Mild soap may be used also to clean the Side Steps.