



# ARROW SIDE STEP

PART #: TB-J22

**FITS:** 2018-Up Jeep Wrangler JL 2 Door



60-120 min



Cutting Not Required



Drilling Not Required

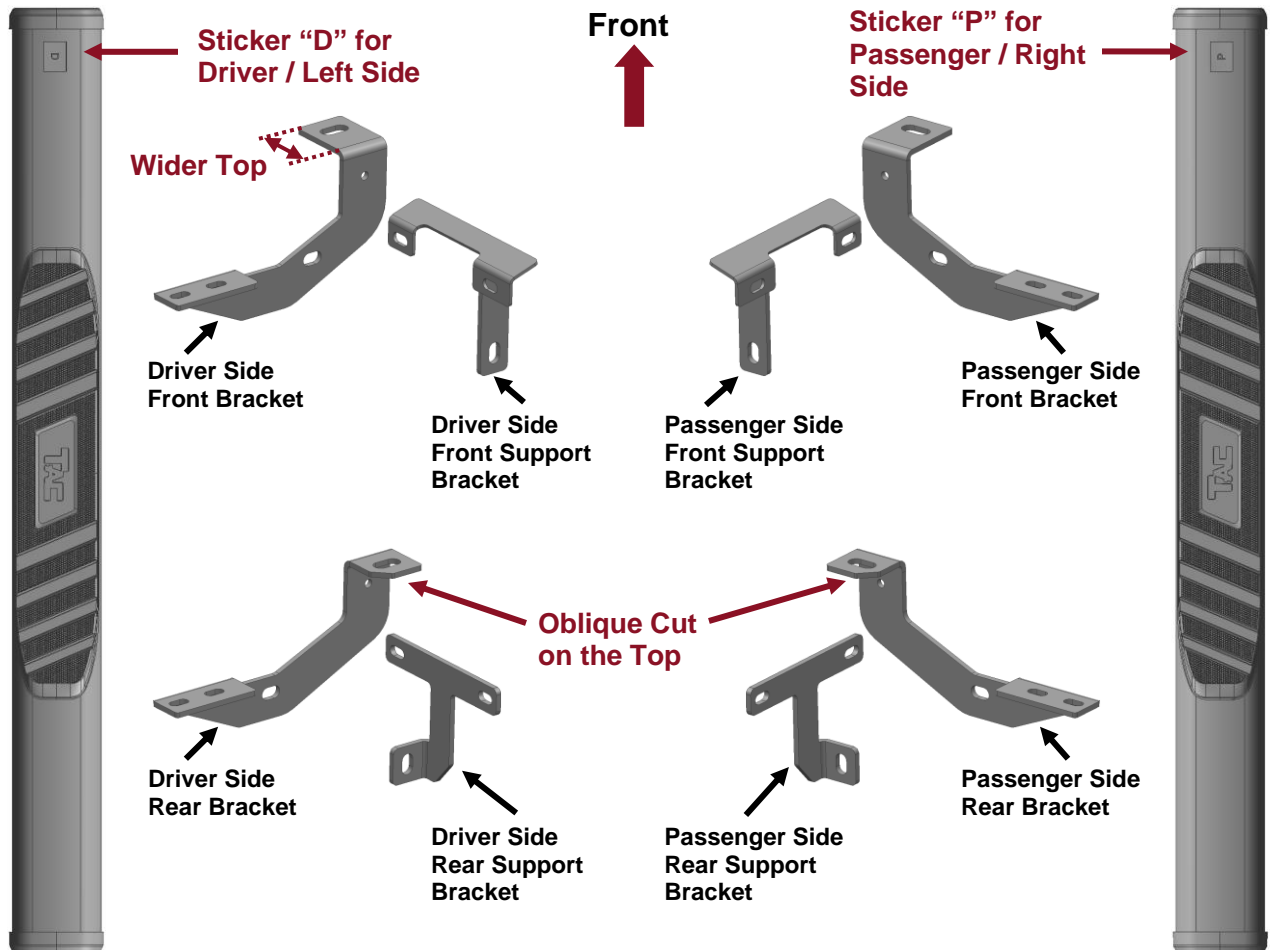
## Torque & Tools

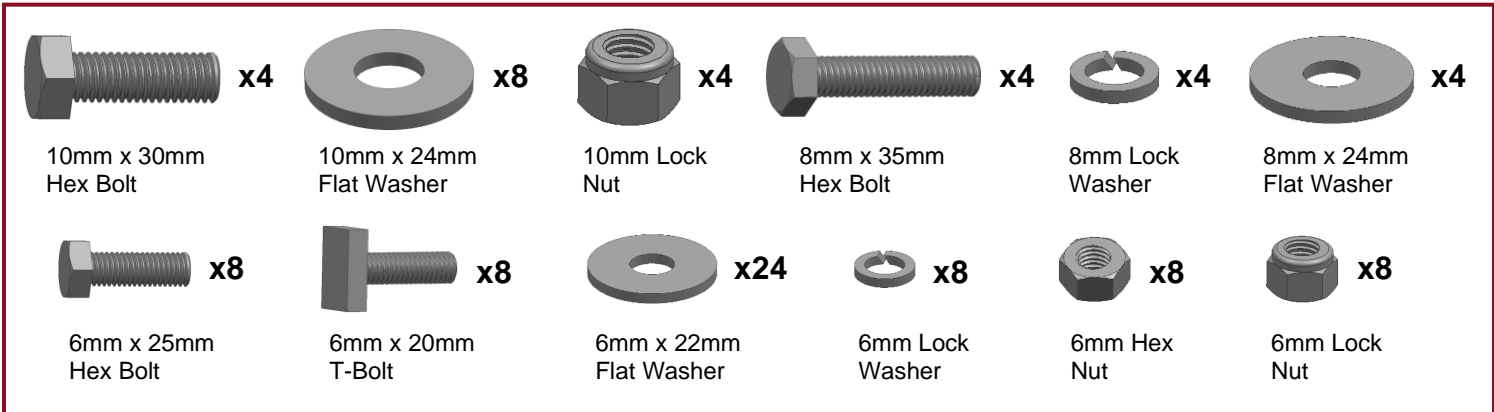
Fastener Size	Tightening Torque (ft-lbs)	Wrench Required		Allen Wrench Required	
			<input checked="" type="checkbox"/> 10mm		<input type="checkbox"/> 4mm
<input checked="" type="checkbox"/> 6mm	<input checked="" type="checkbox"/> 7-8.5		<input checked="" type="checkbox"/> 13mm		<input type="checkbox"/> 5mm
<input checked="" type="checkbox"/> 8mm	<input checked="" type="checkbox"/> 18-20		<input checked="" type="checkbox"/> 16mm		<input type="checkbox"/> 6mm
<input checked="" type="checkbox"/> 10mm	<input checked="" type="checkbox"/> 35-40		<input type="checkbox"/> 18mm		<input type="checkbox"/> 8mm
<input type="checkbox"/> 12mm	<input type="checkbox"/> 60-70				

### BEFORE INSTALLATION

REMOVE CONTENTS FROM BOX. VERIFY ALL PARTS ARE PRESENT. READ INSTRUCTIONS CAREFULLY BEFORE STARTING INSTALLATION. ASSISTANCE IS RECOMMENDED.

### Part List

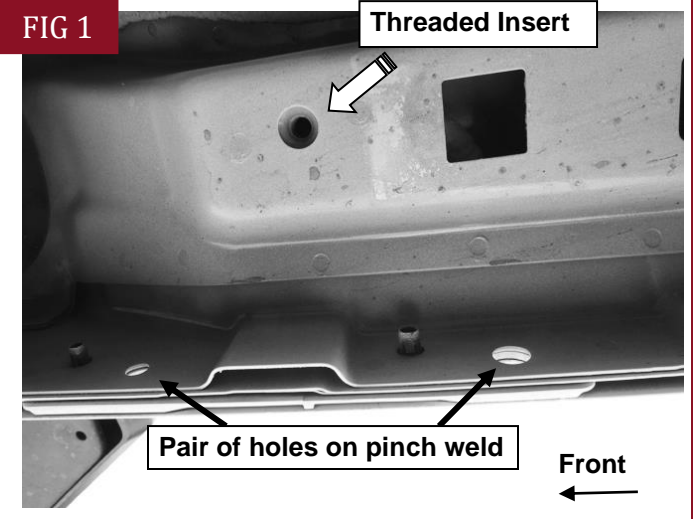




**PLEASE NOTE THAT THE FOLLOWING PICTURES ARE BASED ON THE PASSENGER SIDE INSTALLATION**

## STEP 1

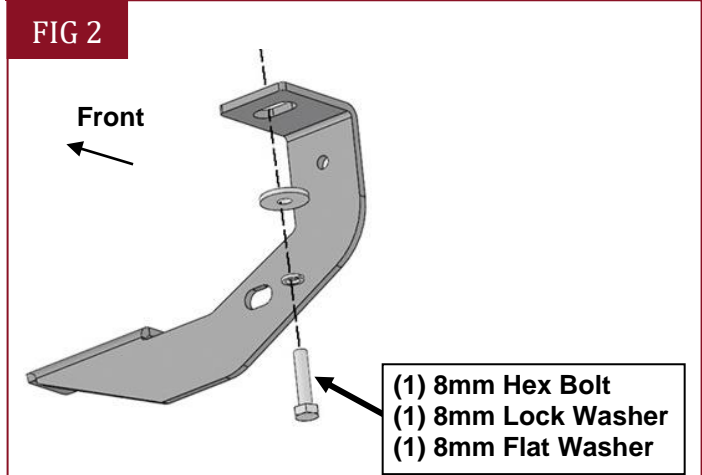
Start installation on the Passenger/Right front of the of the vehicle. Find the front threaded insert located in between the first pair of holes along the pinch weld, **(Fig 1)**.



**(Fig 1) Passenger/Right Front mounting location**

## STEP 2

Select the Passenger/Right Front Mounting Bracket. **IMPORTANT:** Please identify the **Front, and Rear Mounting Brackets** according to the illustration on Part List. Attach the Mounting Bracket to the threaded insert using (1) 8mm Hex Bolt, (1) 8mm Lock Washer and (1) 8mm Flat Washer, **(Fig 2)**. Do not tighten hardware.

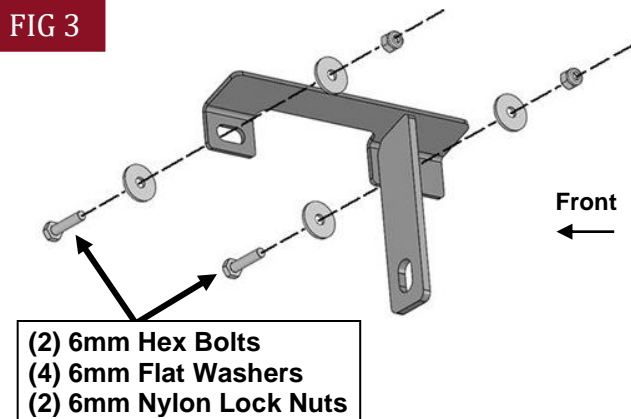


**(Fig 3) Attach the Passenger/Right Front Mounting Bracket to the front location**

## STEP 3

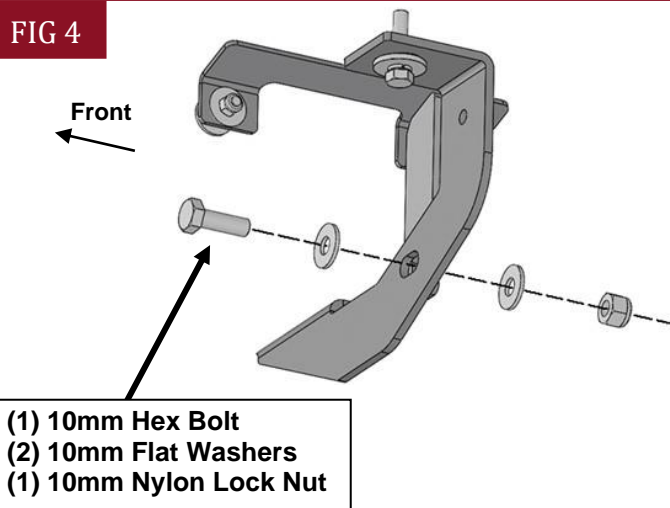
Select the Passenger/Right Front Support Bracket. **IMPORTANT:** Please identify the Front, Rear Support Brackets according to the illustration on Part List. Attach the Support Bracket to the pinch weld using (2) 6mm Hex Bolts, (4) 6mm Flat Washers and (2) 6mm Nylon Lock Nuts, (Fig 3). **NOTE:** Insert Bolts from the outside of the pinch weld. Attach the Support Bracket to the Mounting Bracket with (1) 10mm Hex Bolt, (2) 10mm Flat Washers and (1) 10mm Nylon Lock Nut, (Fig 4). Do not tighten hardware.

FIG 3



(Fig 3) Attach the Passenger/Right Front Support Bracket to the pinch trim

FIG 4

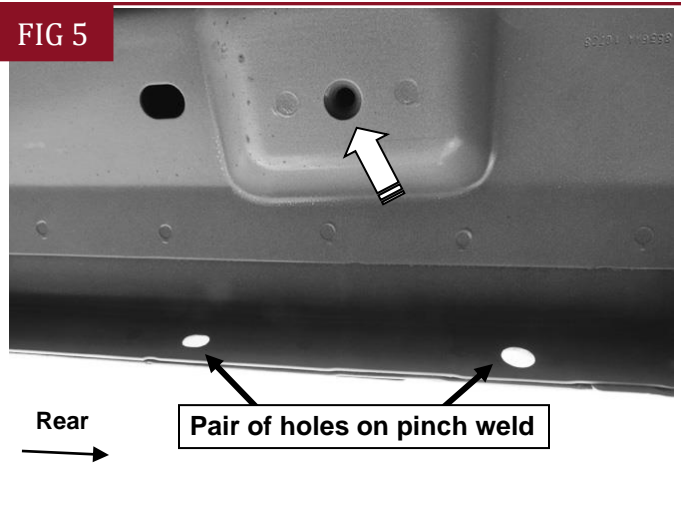


(Fig 4) Attach the Passenger/Right Front Support Bracket to the Mounting Bracket

## STEP 4

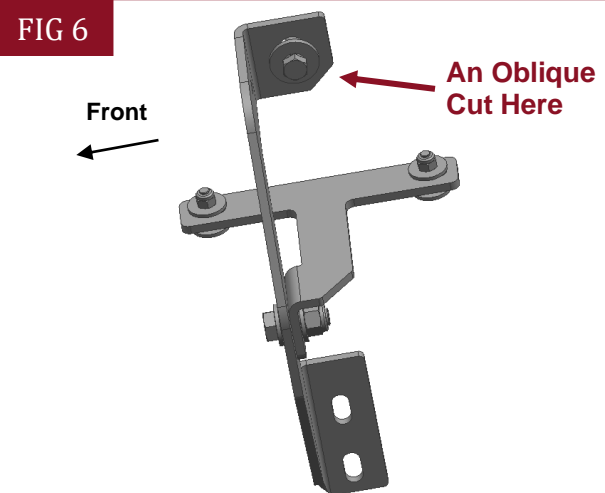
Move to the rear mounting location and locate the threaded insert and pair of holes in the pinch weld, (Fig 5). Repeat Steps 2 & 3 to attach the Passenger/Right Rear Mounting Bracket and Passenger/Right Rear Support Bracket, (Fig 6). **IMPORTANT:** The Rear Mounting Brackets has an Oblique Cut on its top surface. Please identify the Front, Rear Brackets according to the illustration on Part List. Do not tighten hardware.

FIG 5



(Fig 5) Passenger/Right rear mounting location

FIG 6

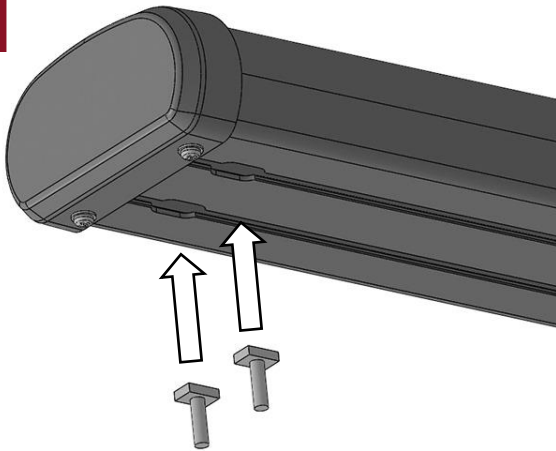


(Fig 6) Attach Passenger/Right Rear Mounting Bracket and Passenger/Right Rear Support Bracket to the rear location

## STEP 5

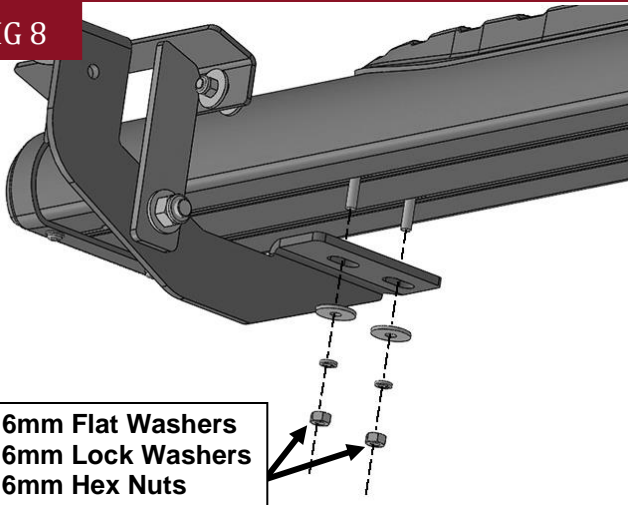
Select the Passenger/Right Side Step. **NOTE:** The Passenger/Right Side Step will have a **Sticker "P" on the front**. Insert (4) 6mm T-Bolts into the channels in the bottom of the Side Step, (**Fig 7**), (2 T-Bolts per channel). Attach the Side Step to the (2) Mounting Brackets with (4) 6mm Flat Washers, (4) 6mm Lock Washers and (4) 6mm Hex Nuts, (**Fig 8**). Do not tighten hardware.

FIG 7



(Fig 7) Insert (4) 6mm T-Bolts into the channels in the bottom of the Side Step, (2 T-Bolts per channel)

FIG 8



(Fig 8) Attach the Passenger/Right Side Step to the Mounting Brackets

## STEP 6

Level and adjust the Side Step and tighten all hardware.

## STEP 7

Repeat **Steps 1—6** to attach Driver/Left Side Step.

## STEP 8

Do periodic inspections to the installation to make sure that all hardware is secure and tight.

### Attention

To protect your investment, do not use any type of polish or wax that may contain abrasives that could damage the finish.

Mild soap may be used also to clean the Side Steps.