



# ARROW SIDE STEP

PART #: TB-J19

**FITS:** 2007-2018 Jeep Wrangler JK 4 Door



60-120 min



Cutting Not Required



Drilling Not Required

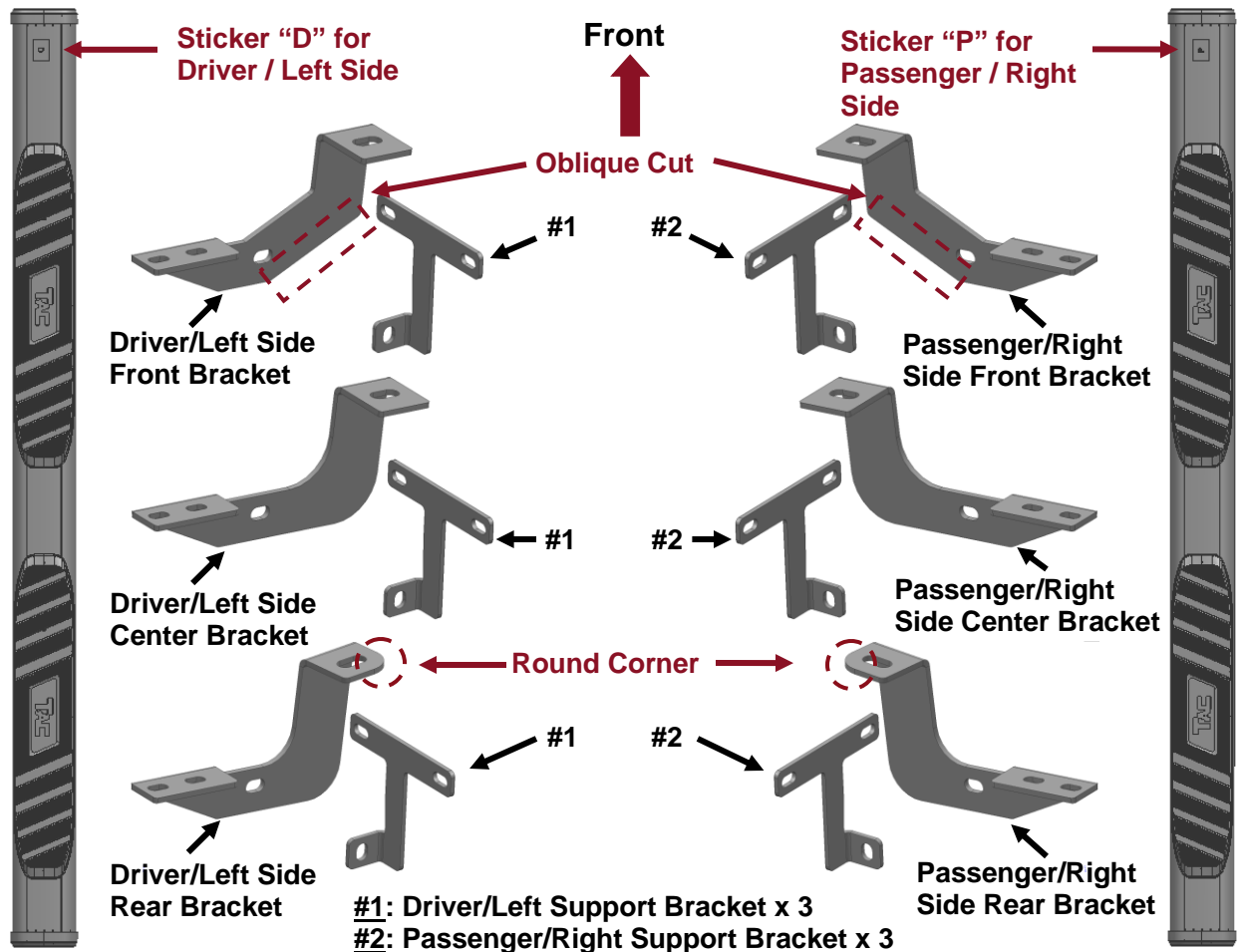
## Torque & Tools

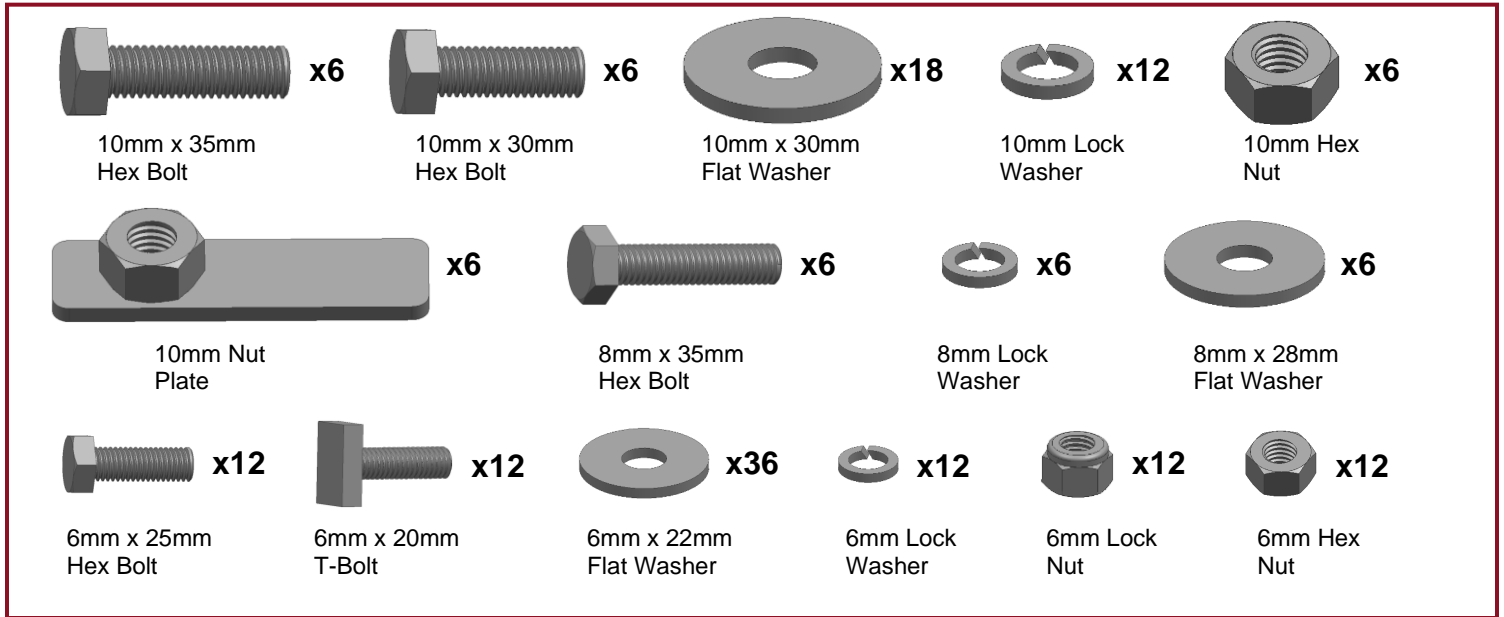
Fastener Size	Tightening Torque (ft-lbs)	Wrench Required		Allen Wrench Required	
			<input checked="" type="checkbox"/> 10mm <input checked="" type="checkbox"/> 13mm <input checked="" type="checkbox"/> 16mm <input type="checkbox"/> 18mm		<input type="checkbox"/> 4mm <input type="checkbox"/> 5mm <input type="checkbox"/> 6mm <input type="checkbox"/> 8mm
<input checked="" type="checkbox"/> 6mm	<input checked="" type="checkbox"/> 7-8.5				
<input checked="" type="checkbox"/> 8mm	<input checked="" type="checkbox"/> 18-20				
<input checked="" type="checkbox"/> 10mm	<input checked="" type="checkbox"/> 35-40				
<input type="checkbox"/> 12mm	<input type="checkbox"/> 60-70				

### BEFORE INSTALLATION

REMOVE CONTENTS FROM BOX. VERIFY ALL PARTS ARE PRESENT. READ INSTRUCTIONS CAREFULLY BEFORE STARTING INSTALLATION. ASSISTANCE IS RECOMMENDED.

### Part List

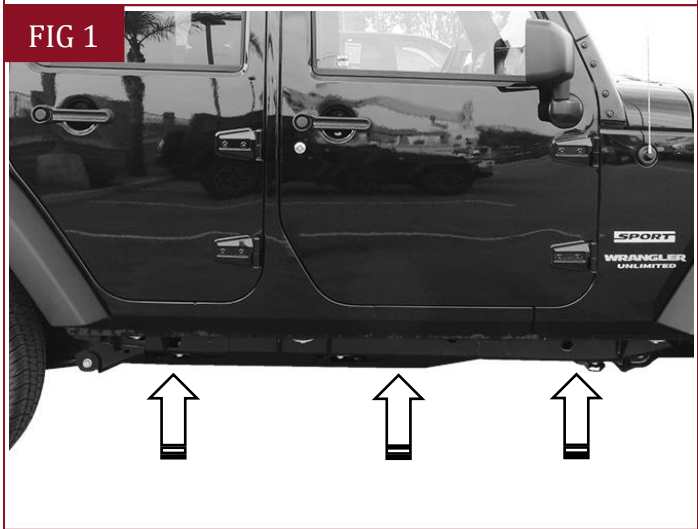




**PLEASE NOTE THAT THE FOLLOWING PICTURES ARE BASED ON THE PASSENGER SIDE INSTALLATION**

## STEP 1

Start installation toward the front of the Passenger/Right side of the vehicle, Locate the front, center and rear mounting locations (Fig 1).



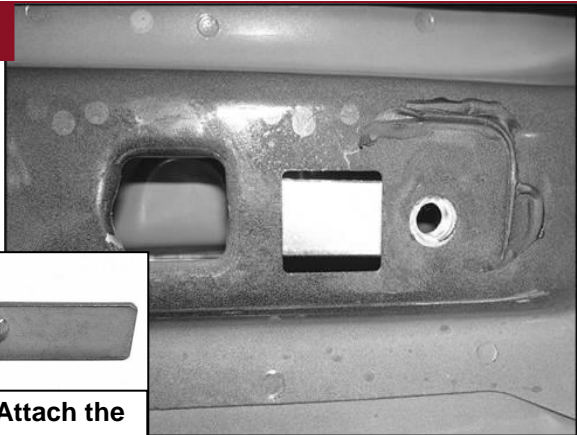
**(Fig 1) Passenger/Right mounting locations**

## STEP 2

**Determine if the vehicle has an open floor panel or a threaded hole in the floor panel**

- (1) Vehicles with open mounting location:**
- a. Insert (1) 10mm Nut Plate into the large square opening in the floor panel. Line up the threaded nut with the hole in between the pair of holes on the pinch weld, (Fig 2).
  - b. Select the Passenger/Right Front Mounting Bracket. **NOTE: There is an Oblique Cut at the Bottom of the Front Brackets and the Rear Brackets have Round Corner at the Top. Please identify the Front, Center and Rear Brackets according to the Part List.**
  - c. Attach the Bracket to the Nut Plate with (1) 10mm x 35mm Hex Bolt, (1) 10mm Lock Washer and (1) 10mm x 34mm Flat Washer, (Fig 3). Do not tighten hardware.
- (2) Vehicles with factory threaded hole in floor panel:**
- a. Select the Passenger/Right Front Mounting Bracket. Attach the Bracket to the front mounting location (Fig 4) with (1) 8mm Hex Bolt, (1) 8mm Lock Washer and (1) 8mm Flat Washer, (Fig 5). Do not tighten hardware.

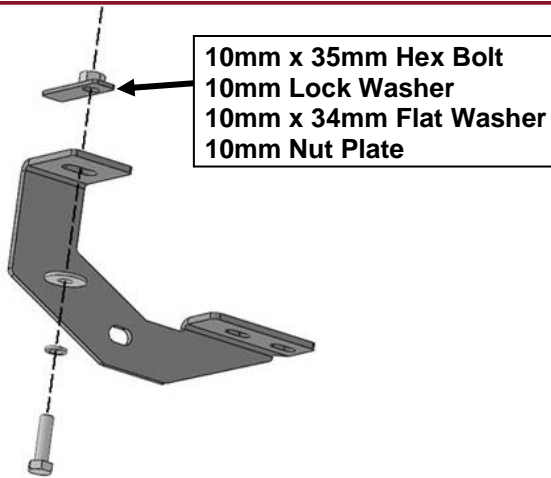
FIG 2



(Fig 3) Attach the

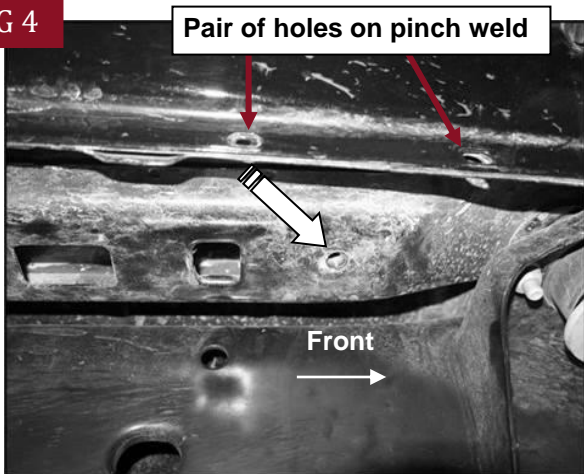
(Fig 2) Passenger/Right front mounting location (Models open mounting location shown)

FIG 3



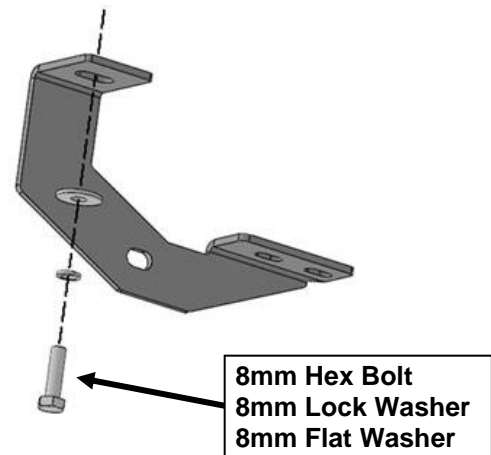
(Fig 3) Attach the Passenger/Right Front Mounting Bracket to the Nut Plate

FIG 4



(Fig4) Passenger/Right front mounting location (Models with threaded insert shown)

FIG 5

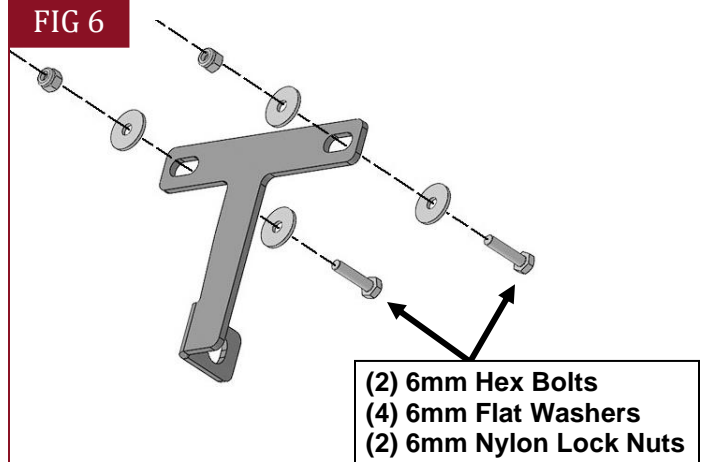


(Fig5) Attach the Passenger/Right Front Mounting Bracket to the Threaded Hole

## STEP 3

Select (1) Passenger/Right Support Bracket (#2). Attach the Support Bracket to the pinch weld with (2) 6mm Hex Bolts, (4) 6mm Flat Washers and (2) 6mm Nylon Lock Nuts, (Fig 6).

FIG 6

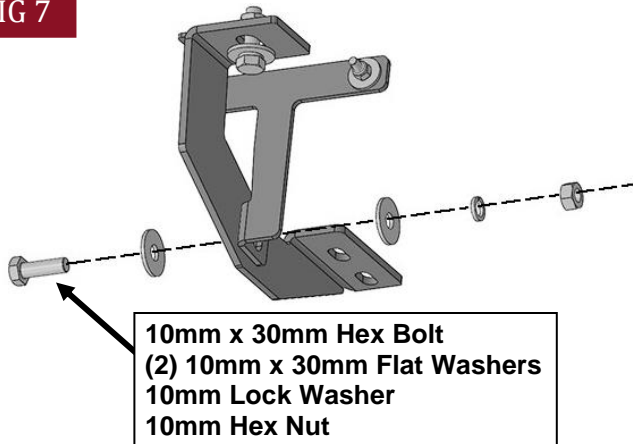


(Fig 6) Attach (1) Passenger/Right Support Bracket (#2) to the (2) holes in the pinch trim in the front location

## STEP 4

Attach the Support Bracket to the Mounting Bracket with (1) 10mm x 30mm Hex Bolt, (2) 10mm x 30mm Flat Washers, (1) 10mm Lock Washer and (1) 10mm Hex Nut, (**Figure 6**). Do not tighten hardware.

FIG 7

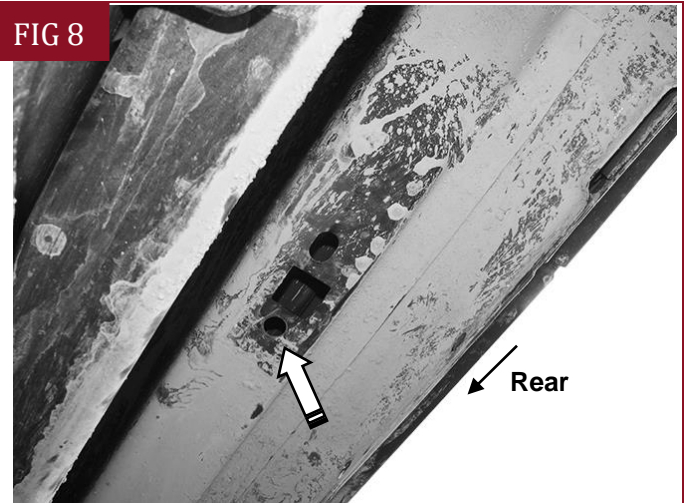


(Fig 7) Attach (1) Passenger/Right Support Bracket (#2) to the Front Mounting Bracket

## STEP 5

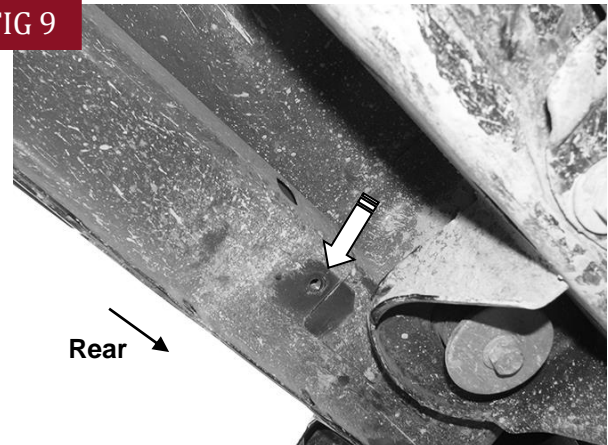
Repeat **Steps 2 - 4** to attach the Passenger/Right Center and Rear Mounting Brackets and Support Brackets to the center and rear locations, (**Figs 8-9**). **NOTE:** The **Front, Center and Rear Mounting Brackets** look similar but unique. Please identify the Brackets according to the Part List. Do not tighten hardware.

FIG 8



(Fig 8) Passenger/Right center mounting location (Model with open mounting location shown)

FIG 9

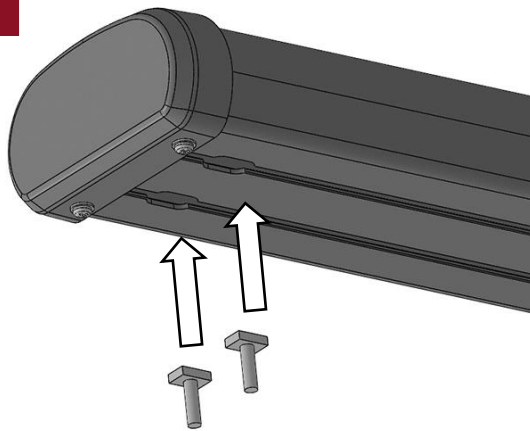


(Fig 9) Passenger/Right rear mounting location (Model with threaded inset shown)

## STEP 6

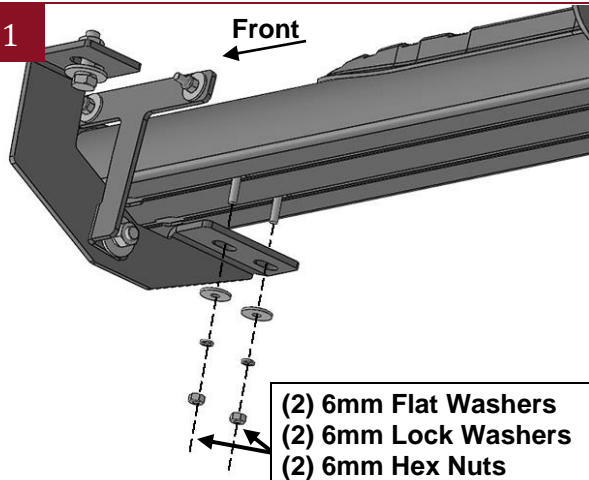
Select the Passenger/Right Side Step. **NOTE:** The Passenger/Right Side Step will have a **Sticker "P" on the front**. Insert (6) 6mm T-Bolts into the channels in the bottom of the Side Step, (Fig 10), (3 T-Bolts per channel). Attach the Step to the (3) Mounting Brackets with (6) 6mm Flat Washers, (6) 6mm Lock Washers and (6) 6mm Hex Nuts, (Fig 11). Do not tighten hardware.

FIG 10



(Fig 10) Insert (6) 6mm T-Bolts into the channels in the bottom of the Side Step, (3 T-Bolts per channel)

FIG 11



(Fig 11) Attach the Passenger/Right Side Step to the Mounting Brackets

## STEP 7

Level and adjust the Side Step and tighten all hardware.

## STEP 8

Repeat **Steps 1—7** to attach Driver/Left Side Step.

## STEP 9

Do periodic inspections to the installation to make sure that all hardware is secure and tight.

### Attention

To protect your investment, do not use any type of polish or wax that may contain abrasives that could damage the finish.

Mild soap may be used also to clean the Side Steps.