



INSTALLATION INSTRUCTIONS

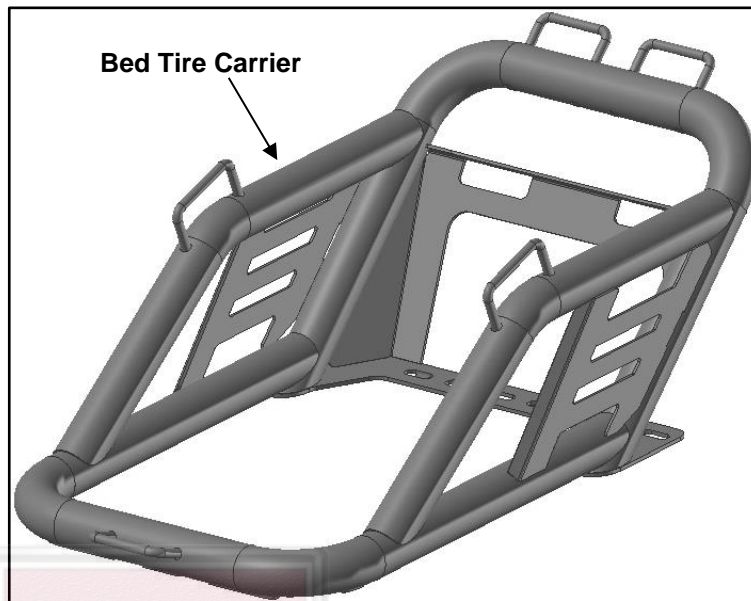
UNIVERSAL BED TIRE CARRIER

PART#TAC-UTC-002

TRUCK ACCESSORIES COMPANY

Parts List

1	Bed Tire Carrier	4	12mm Hex Nuts
4	12mm x 45mm T-Bolts	8	12mm Plastic Retainers
4	12mm x 32mm OD x 3mm Flat Washers	4	12mm Fish Wires
4	12mm Lock Washers		



PROCEDURE:

REMOVE CONTENTS FROM BOX. VERIFY ALL PARTS ARE PRESENT. READ INSTRUCTIONS CAREFULLY BEFORE STARTING INSTALLATION. DRILLING IS REQUIRED.

1. Start installation in the bed of the vehicle the Bed Tire Carrier will be installed to. Place the Tire Carrier onto the bed floor in the desired location. Place tape underneath the desired slots and mark the slots for drilling, **(Figure 1)**. **NOTE:** For corrugated beds. Only mark drill holes in the center of highest point of the corrugation as to not bend the metal.
2. Drill a pilot hole into the marked locations, **(Figure 2 left hole)**. Use a 1/2inch drill bit to clear the 12mm T-Bolts, **(Figure 2 right hole)**.
3. Select (1) 12mm T-Bolt and (1) 12mm Fish Wire. Thread the Fish Wire onto the T-Bolt and guide the T-Bolt into the newly drilled hole, **(Figure 3)**. Thread (1) 12mm Plastic Retainer onto the T-Bolt to hole it in place, **(Figure 4)**. **IMPORTANT:** For aluminum vehicle bodies, it is necessary to thread (1) 12mm Plastic Retainer onto the 12mmT-Bolts before being inserted into the bed to prevent corrosion. Repeat this **Step** for the remaining (3) 12mm T-Bolts.
4. Place the Bed Tire Carrier onto the (4) T-Bolts and secure with (4) 12mm Flat Washers, (4) 12mm Lock Washers and (4) 12mm Hex Nuts, **(Figures 5 & 6)**. Do not tighten hardware.
5. Adjust and level the Bed Tired Carrier, then fully tighten all hardware.
6. Place the tire into the Bed Tire Carrier. Determine the locations to attach the strap hooks, **(Figures 7—9)**. (Straps not included, 3-point strap recommended purchase). For a more secure fit, use the side hoops on the Tire Carrier to strap down the tire crossways, **(Figure 7)**.
7. Do periodic inspections to the installation to make sure that all hardware is secure and tight.

To protect your investment, Do not use any type of polish or wax that may contain abrasives that could damage the finish. Mild soap may be used to clean the Tire Carrier.

UNIVERSAL BED TIRE CARRIER

Passenger/Right Installation Pictured



(Fig 1) Place the Bed Tire Carrier onto the desired location on the floor of the bed. Place tape onto the bed under slots. Mark locations for drilling. **IMPORTANT:** Check underneath the bed to avoid drilling through gas lines or other important fixtures under the bed.

NOTE: For corrugated beds. Only mark drill holes in the center of highest point of the corrugation.



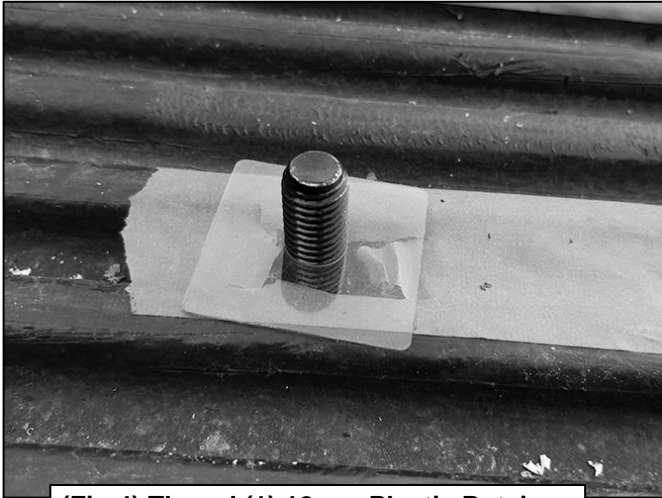
(Fig 2) First drill a pilot hole into the marked location, then use a 1/2inch drill bit to clear the 12mm T-Bolts



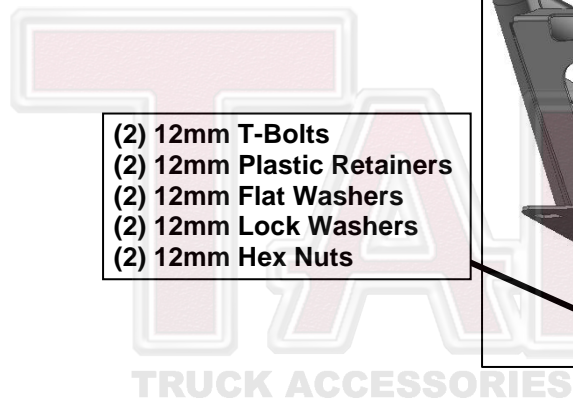
(Fig 3) Thread (1) 12mm T-Bolt into (1) 12mm Fish Wire. Slide the end of the Fish Wire into the drilled-out hole from the bottom of the bed

NOTE: For aluminum vehicle bodies, it is necessary to thread (1) 12mm Plastic Retainer onto the 12mm T-Bolts before being inserted into the bed

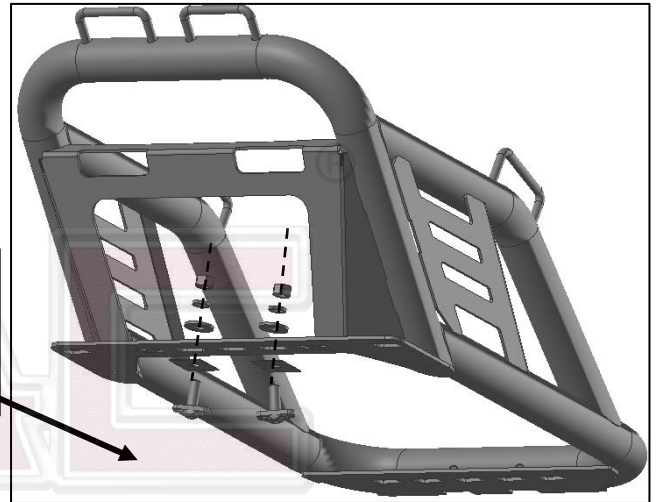
Passenger/Right Installation Pictured



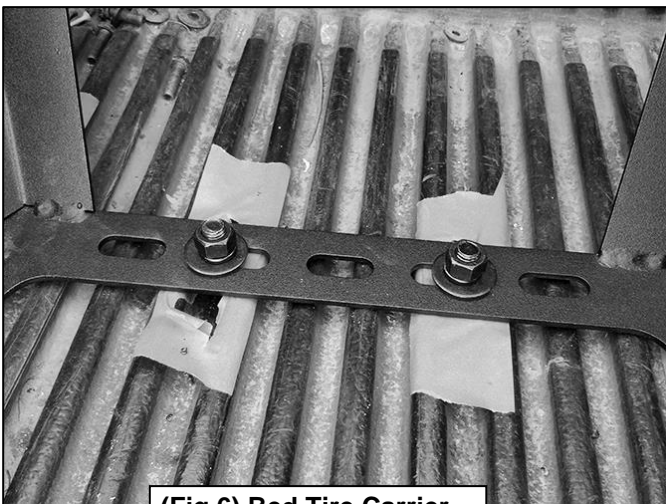
(Fig 4) Thread (1) 12mm Plastic Retainer to the T-Bolt to hold it in place



- (2) 12mm T-Bolts
- (2) 12mm Plastic Retainers
- (2) 12mm Flat Washers
- (2) 12mm Lock Washers
- (2) 12mm Hex Nuts

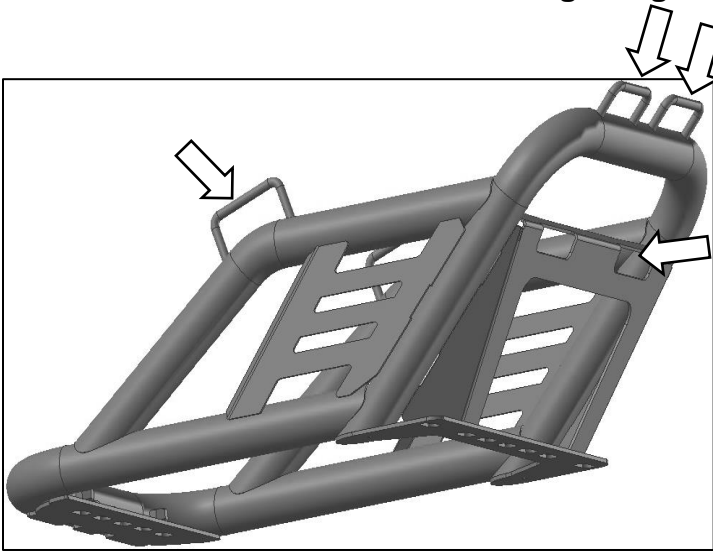


(Fig 5) Attach the Bed Tire Carrier to the T-Bolts

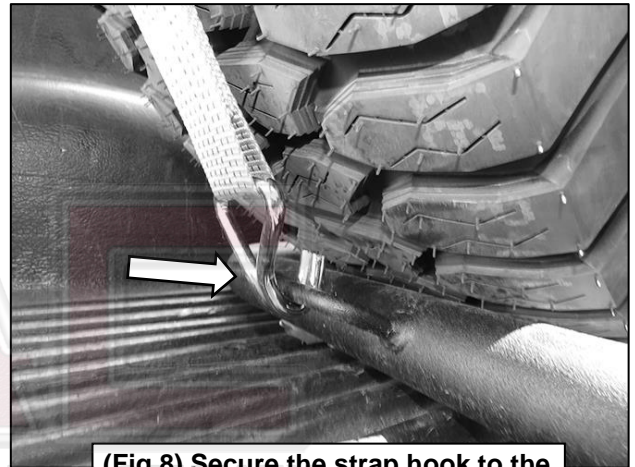


(Fig 6) Bed Tire Carrier attached to the bed floor

Passenger/Right Installation Pictured



(Fig 7) Determine the strap attachment points, (straps not included). If desired, use a strap crossways from the sides of Carrier (not shown)



(Fig 8) Secure the strap hook to the lower hoop (strap not included)



(Fig 9) For 3-Point straps, (recommended separate purchase). Attach the hooks to either the upper hoops or inner plates as shown in picture above