



# Defender Step

PART #: TAC-TDS-013

**FITS:** 2005-Up Toyota Tacoma Double Cab



60-120 min



Cutting Not Required



Drilling Not Required

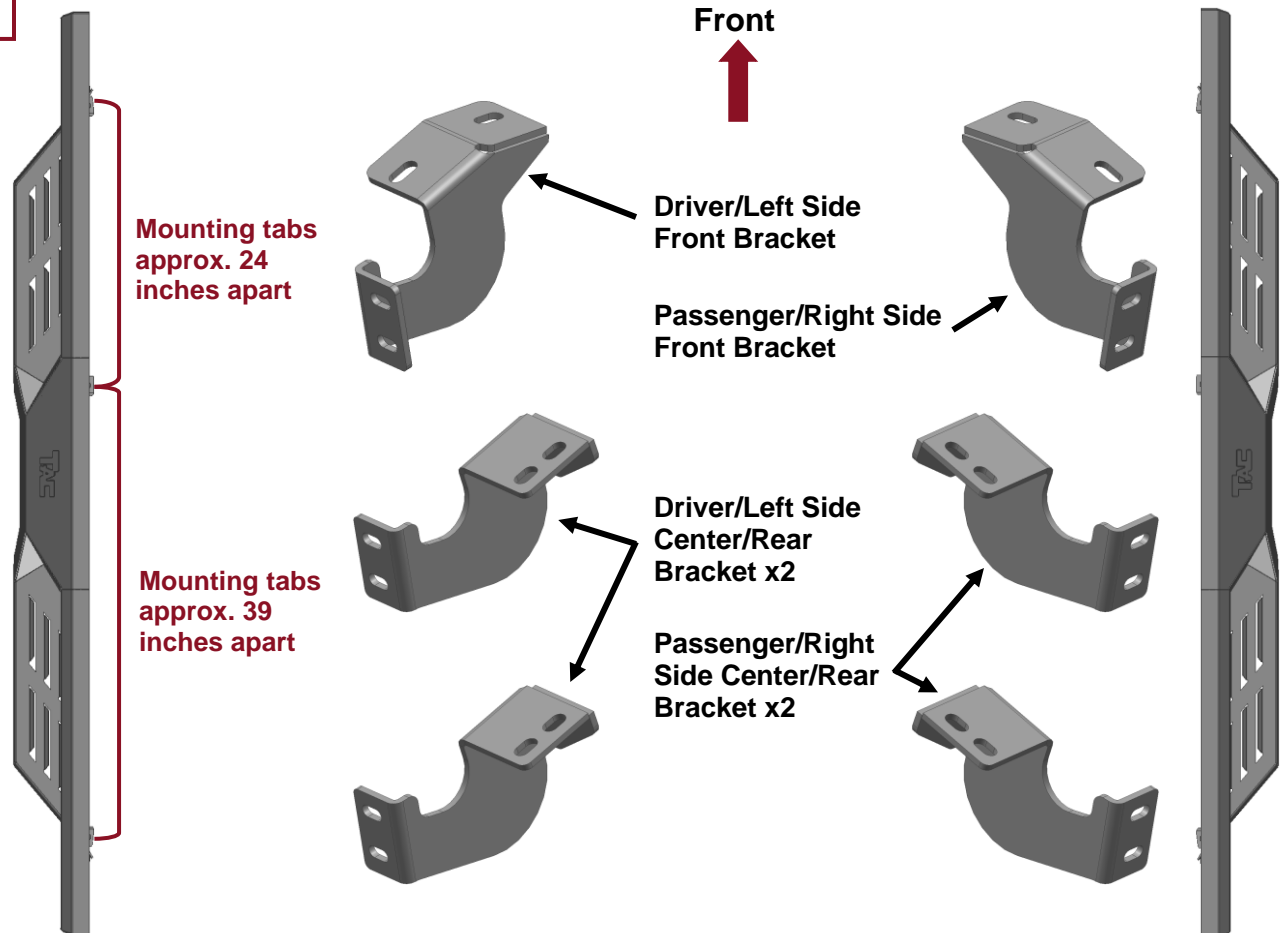
## Torque & Tools

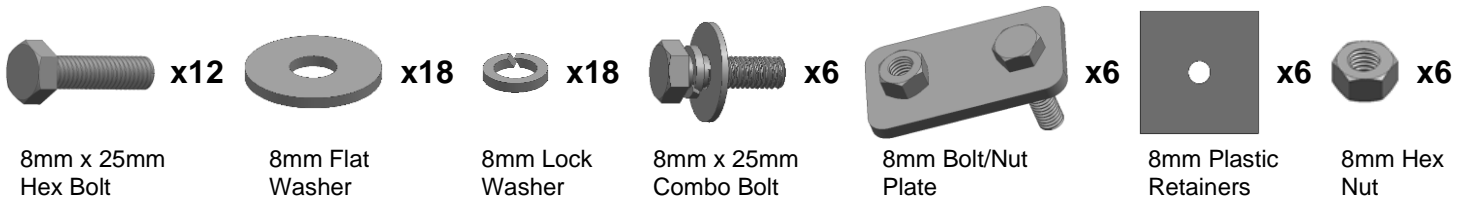
Fastener Size	Tightening Torque (ft-lbs)	Wrench Required		Allen Wrench Required	
			<input type="checkbox"/> 10mm		<input type="checkbox"/> 4mm
<input type="checkbox"/> 6mm	<input type="checkbox"/> 7-8.5		<input checked="" type="checkbox"/> 13mm		<input type="checkbox"/> 5mm
<input checked="" type="checkbox"/> 8mm	<input checked="" type="checkbox"/> 18-20		<input type="checkbox"/> 16mm		<input type="checkbox"/> 6mm
<input type="checkbox"/> 10mm	<input type="checkbox"/> 35-40		<input type="checkbox"/> 18mm		<input type="checkbox"/> 8mm
<input type="checkbox"/> 12mm	<input type="checkbox"/> 60-70				

### BEFORE INSTALLATION

REMOVE CONTENTS FROM BOX. VERIFY ALL PARTS ARE PRESENT. READ INSTRUCTIONS CAREFULLY BEFORE STARTING INSTALLATION. ASSISTANCE IS RECOMMENDED.

### Part List



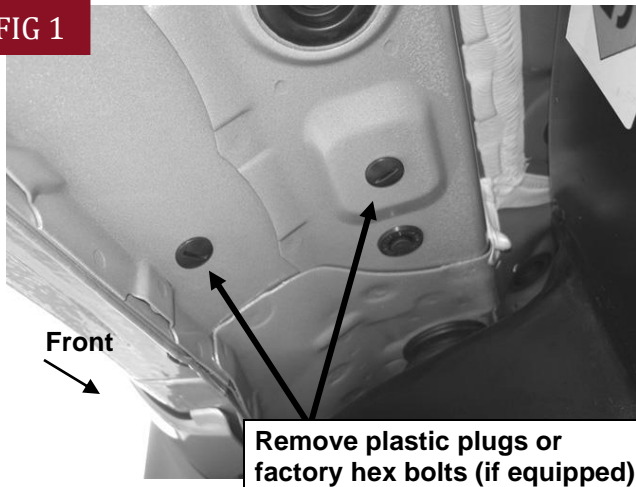


**PLEASE NOTE THAT THE FOLLOWING PICTURES ARE BASED ON THE DRIVER SIDE INSTALLATION**

## STEP 1

Starting on the Driver/Left front of the vehicle, remove the plastic plugs, (or hex bolts), covering the threaded holes in the body panel, **(Fig 1)**.

FIG 1

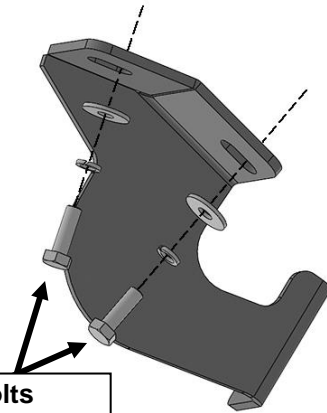


**(Fig 1) Driver/Left front mounting location**

## STEP 2

Select the Driver/Left Front Mounting Bracket. Attach the Bracket to the vehicle with (2) 8mm Hex Bolts, (2) 8mm Lock Washers and (2) 8mm Flat Washers, **(Fig 2)**. Do not tighten hardware at this time.

FIG 2



(2) 8mm Hex Bolts  
(2) 8mm Lock Washers  
(2) 8mm Flat Washers

**(Fig 2) Attach Driver/Left Front Mounting Bracket to the front mounting location**

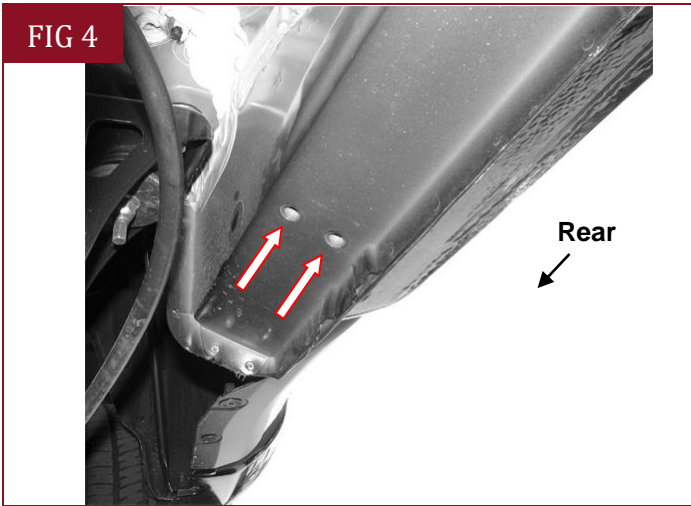
## STEP 3

Move along the body panel to the center and rear mounting location, **(Figs 3 & 4)**. Select remaining (2) Driver/Left Center/Rear Mounting Brackets. Repeat **Step 2** to install the Mounting Bracket on center and rear mounting locations, **(Fig 5)**. Do not tighten hardware.

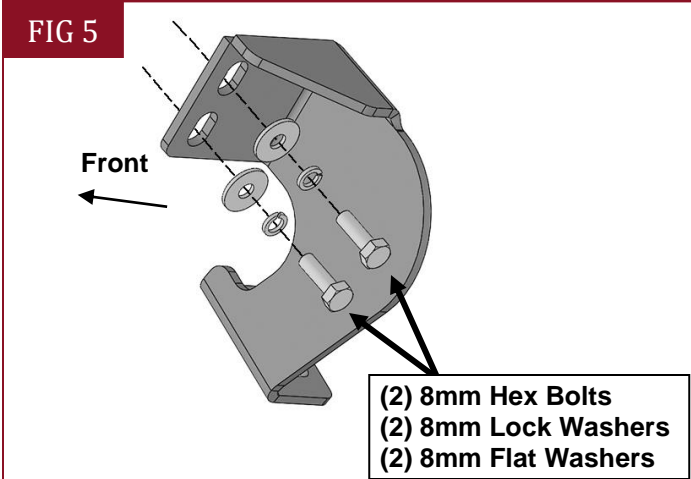
FIG 3



**(Fig 3) Driver/Left center mounting location**



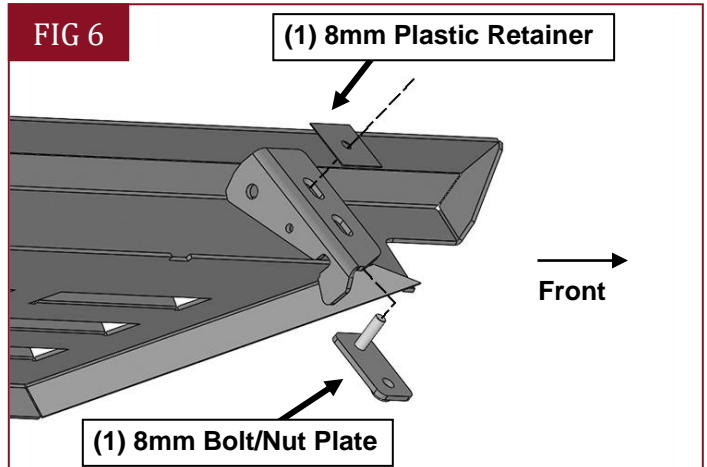
(Fig 4) Driver/Left rear mounting location



(Fig 5) Attach Driver/Left Center/Rear Mounting Brackets to the center and rear mounting locations

## STEP 4

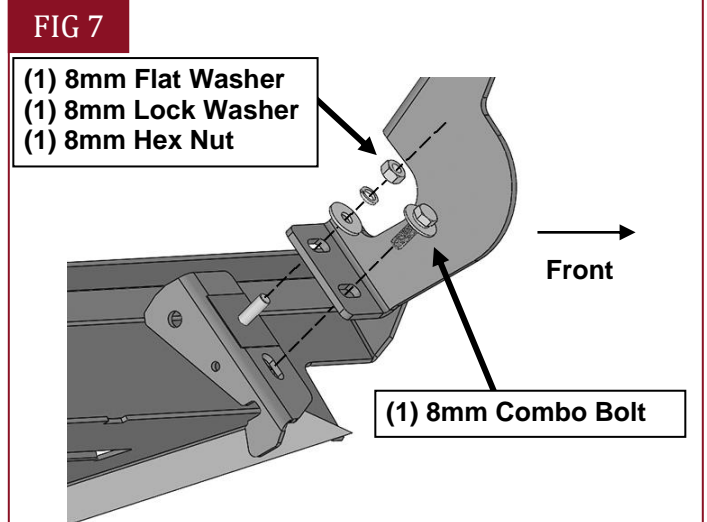
Select the Driver/Left Running Board. **NOTE:** Please identify the Driver Side and Passenger Side Running Board according to the illustration on Part List. Carefully place Running Board on the brackets. Select (1) 8mm Bolt/Nut Plate. Insert the threaded part of the Bolt/Nut Plate into the upper hole of the mounting tab. Thread (1) 8mm Plastic retainer onto the threads to hold it in place, (Fig 6). Repeat for the (2) remaining mounting tabs.



(Fig 6) Insert (1) 8mm Bolt Nut Plate into the mounting tab

## STEP 5

Attach the Running Board to the Mounting Brackets with (3) 8mm Flat Washers, (3) 8mm Lock Washers, (3) 8mm Hex Nuts, and (3) 8mm Combo Bolts, (Fig 7). Do not tighten hardware.



(Fig 7) Attach Driver/Left Running Board to the Mounting Brackets

## STEP 6

Level and adjust the Running Board and fully tighten all hardware.

## STEP 7

Repeat **Steps 1—6** to attach the Passenger/Right Running Board.

## STEP 8

Do periodic inspections to the installation to make sure that all hardware is secure and tight.

### Attention

To protect your investment, do not use any type of polish or wax that may contain abrasives that could damage the finish.

Mild soap may be used also to clean the Running Boards.