



# COBRA RUNNING BOARD

PART #: TAC-JWB-008

**FITS:** 2011-2021 Jeep Grand Cherokee  
2022 Jeep Grand Cherokee WK Models

**Exclude:** Limited X / High Altitude / Summit / SRT / SRT8 /  
Trackhawk / Trailhawk Models



60-120 min



Cutting Not  
Required



Drilling Not  
Required

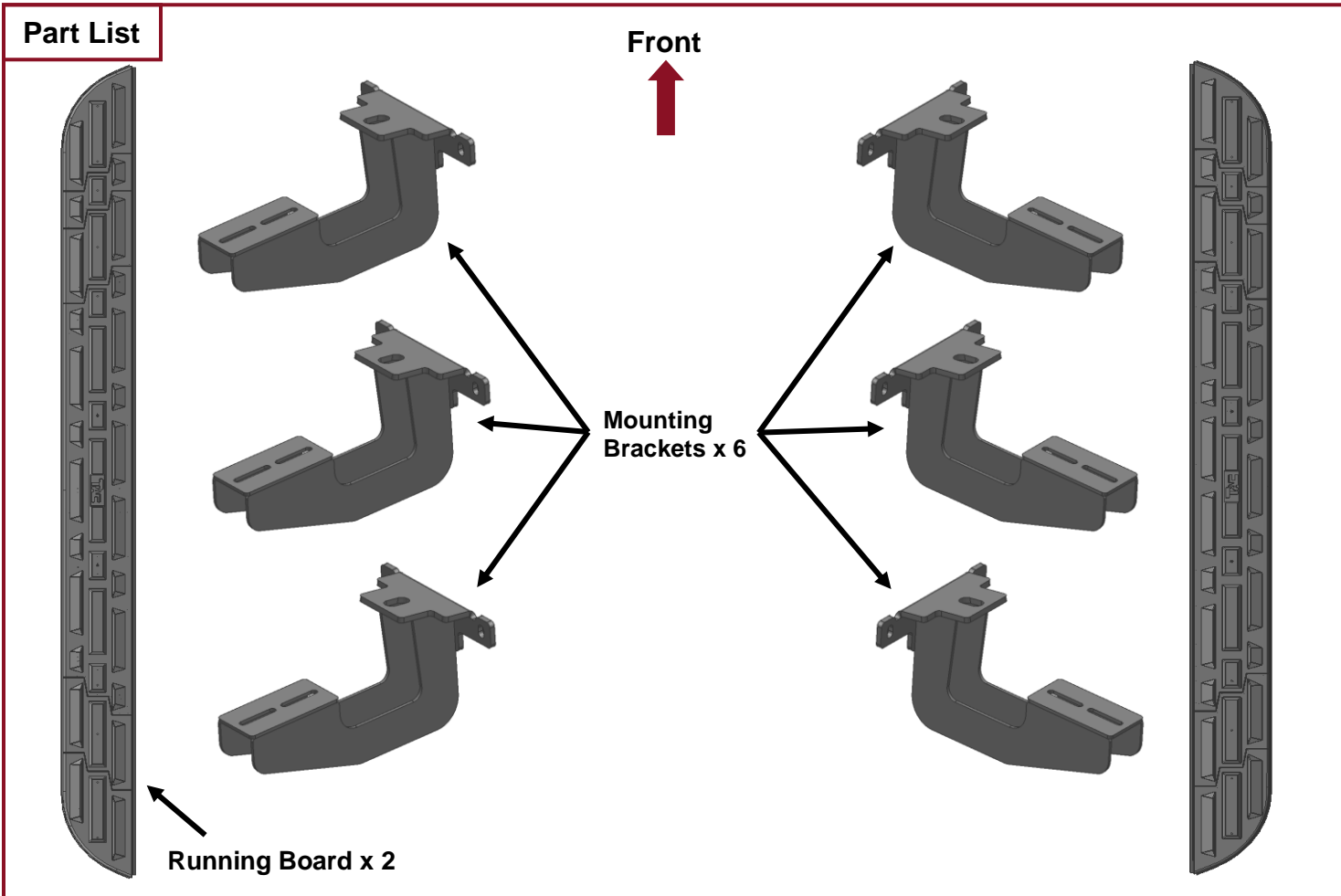
## Torque & Tools

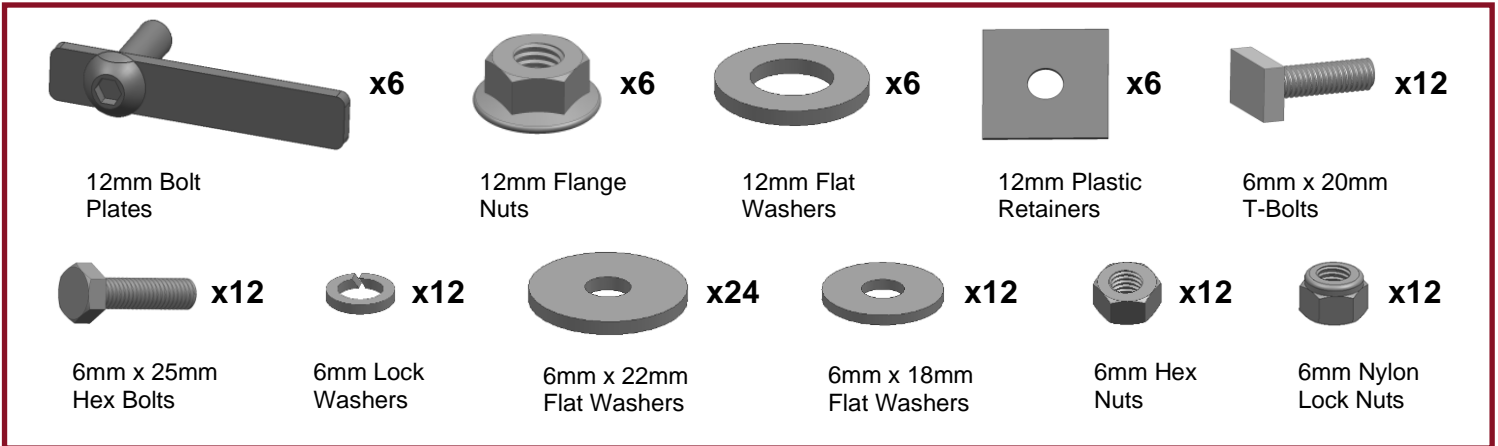
Fastener Size	Tightening Torque (ft-lbs)	Wrench Required		Allen Wrench Included	
			<input checked="" type="checkbox"/> 10mm <input type="checkbox"/> 13mm <input type="checkbox"/> 16mm <input checked="" type="checkbox"/> 18mm		<input type="checkbox"/> 4mm
<input type="checkbox"/> 8mm	<input type="checkbox"/> 18-20				<input type="checkbox"/> 5mm
<input type="checkbox"/> 10mm	<input type="checkbox"/> 35-40				<input type="checkbox"/> 6mm
<input checked="" type="checkbox"/> 12mm	<input checked="" type="checkbox"/> 60-70				<input type="checkbox"/> 8mm

### BEFORE INSTALLATION

REMOVE CONTENTS FROM BOX. VERIFY ALL PARTS ARE PRESENT. READ INSTRUCTIONS CAREFULLY BEFORE STARTING INSTALLATION. ASSISTANCE IS RECOMMENDED.

### Part List

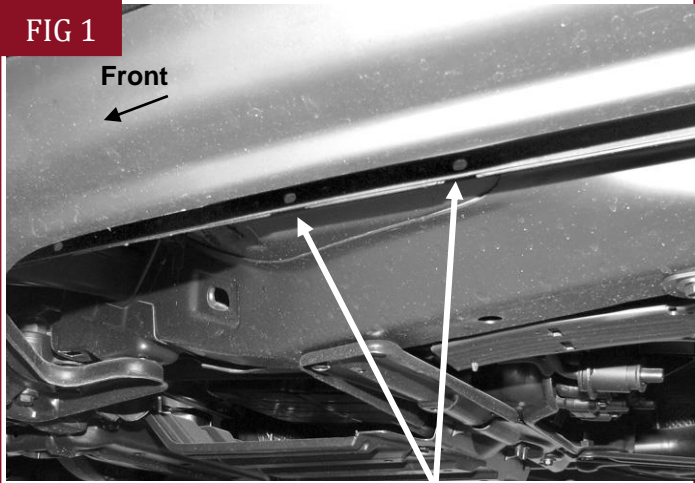




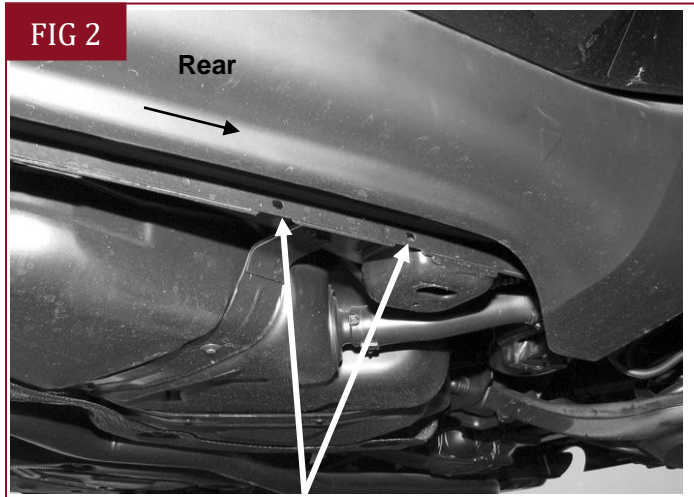
**PLEASE NOTE THAT THE FOLLOWING PICTURES ARE BASED ON THE DRIVER SIDE INSTALLATION**

## STEP 1

Starting at the driver side, locate the (3) pairs of factory holes in the pinch weld, (Figs 1 & 2).



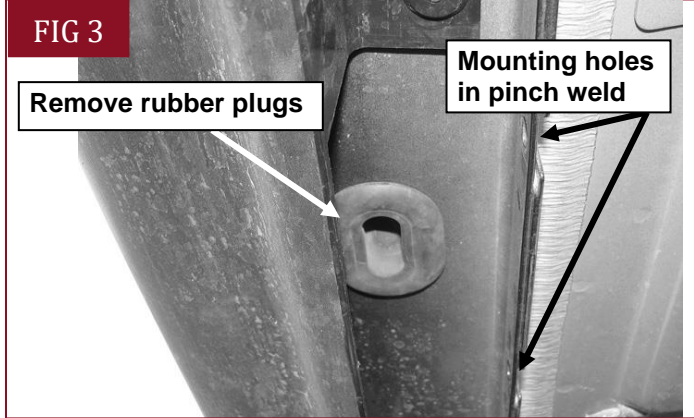
(Fig 1) Driver side front mounting location pictured



(Fig 2) Driver side rear mounting location pictured

## STEP 2

Move toward the front pair. Remove the rubber plug filling the oval hole in the bottom of the rocker panel in front of the two holes, (Fig 3).



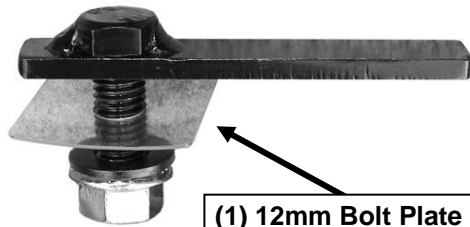
(Fig 3) Driver side front mounting location

## STEP 3

Select (1) 12mm Bolt Plate and (1) 12mm Plastic Retainer. Partially thread the Retainer onto the Bolt Plate. Insert the Bolt Plate into the hole and rotate it 90-degrees to go across the slot, **(Fig 4)**. Thread the Retainer all the way down the Bolt Plate and tight against the body panel, **(Fig 5)**.

**NOTE:** The Plastic Retainer is designed to prevent the Bolt Plate from falling into the body cavity and to aid in installing the Bracket.

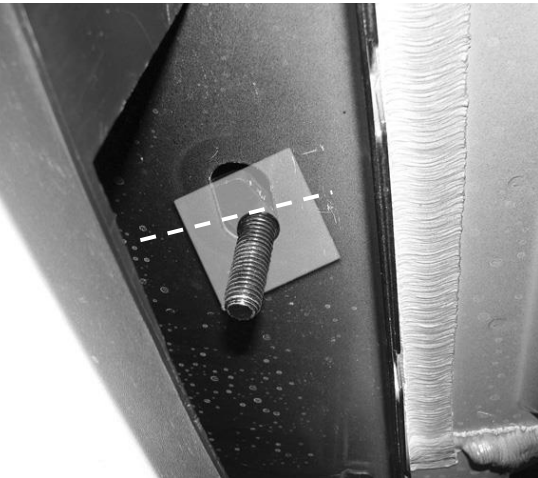
FIG 4



(1) 12mm Bolt Plate  
(1) 12mm Plastic Retainer  
(1) 12mm Flat Washer  
(1) 12mm Flange Nut

(Fig 4) 12mm Bolt Plate assembly

FIG 5



(Fig 5) After inserting, rotate Bolt Plate 90-degrees to go across the slot or until Bolt Plate stops

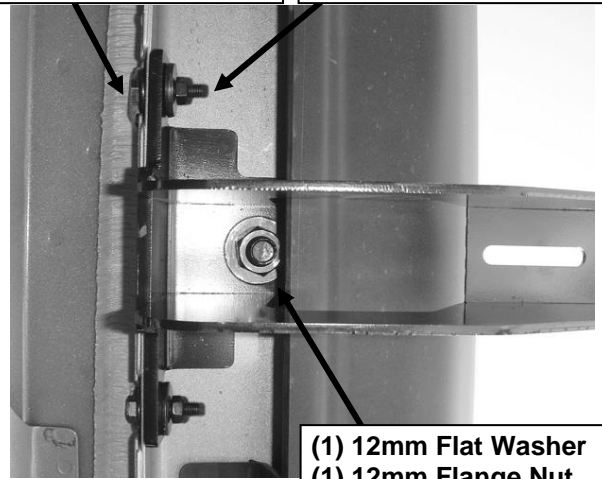
## STEP 4

Select (1) Mounting Bracket and secure it to the Bolt Plate with (1) 12mm x 24mm Flat Washer and (1) 12mm Serrated Flange Nut, **(Fig 6)**. Do not tighten hardware at this time.

FIG 6

**Inside Pinch Weld:**  
6mm x 25mm Hex Bolts  
6mm x 18mm Flat Washers

**Outside Pinch Weld:**  
6mm x 22mm Flat Washers  
6mm Nylon Lock Nuts



(1) 12mm Flat Washer  
(1) 12mm Flange Nut

(Fig 6) Mounting Bracket installed

## STEP 5

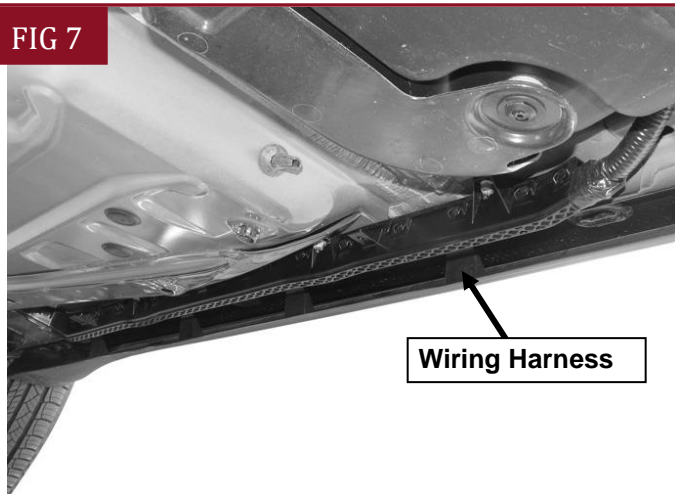
Line up the (2) small slots in the Bracket with the (2) holes in the pinch weld. Insert (1) 6mm x 25mm Hex Bolt with (1) 6mm x 18mm Flat Washer through the pinch weld and then the Bracket. Secure the Bracket to the Hex Bolt with (1) 6mm x 22mm Flat Washer and (1) 6mm Nylon Lock Nut over the Bracket, **(Figs 6 & 9)**. Do not tighten hardware at this time. Repeat for remaining mounting hole in Bracket and pinch weld.

## STEP 6

**NOTE:** Insert 6mm Hex Bolts with 6mm x 18mm Flat Washers through the back of the pinch weld first, and then out through the Bracket.

**IMPORTANT:** The passenger side of the vehicle may have a wiring harness attached behind the pinch weld, (Fig 7). Remove the hex nuts and drop the harness down before installing the Brackets, (Fig 8). 6mm Hex Bolts install from the inside first, then through the Bracket to clear the harness, (Fig 9). Snug but do not fully tighten hardware at this time.

FIG 7

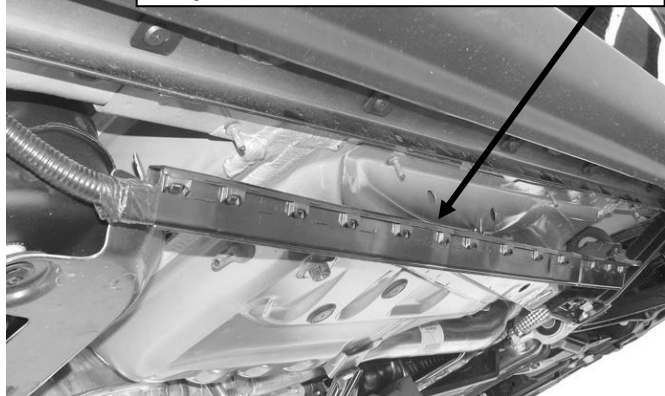


Wiring Harness

(Fig 7) Passenger side pictured from below

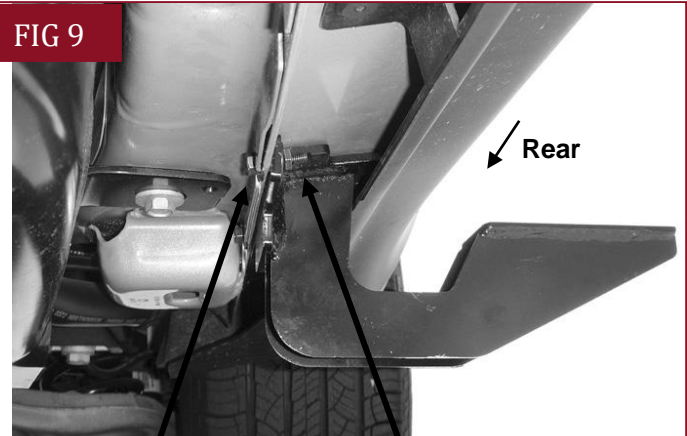
FIG 8

Remove hex nuts from wiring harness. Drop harness down to install Brackets.



(Fig 8) Passenger side pictured

FIG 9



Rear

**Inside Pinch Weld:**

6mm x 25mm Hex Bolts  
6mm x 18mm Flat Washers

**Outside Pinch Weld:**

6mm x 22mm Flat Washers  
6mm Nylon Lock Nuts

(Fig 9) Mounting Bracket installed

## STEP 7

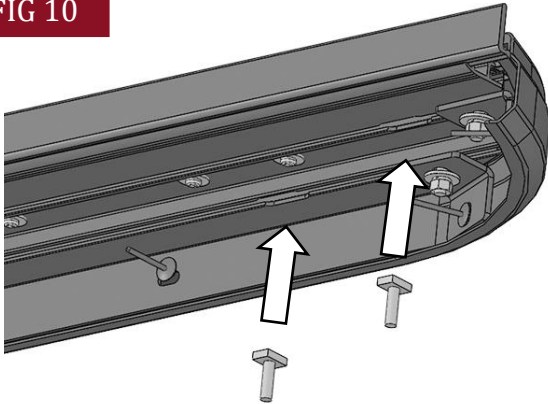
Repeat **Steps 1 – 6** to install the center and rear Brackets, (Fig 9).

## STEP 8

Select (1) Running Board. Locate the openings cut at the end of the slots on the bottom of the Running Board, (Fig 10). Insert (3) 6mm T-Bolts into each channel through the openings. Slide the T-Bolts into the approximate position in line with the (3) Brackets. Carefully place the Running Board in position on top of the Brackets. Slide the T-Bolts forward or back until they line up and drop into the slots on the Brackets. **NOTE:** It may be necessary to lower the Brackets to insert the Running Board. Loosen hardware as necessary.



FIG 10

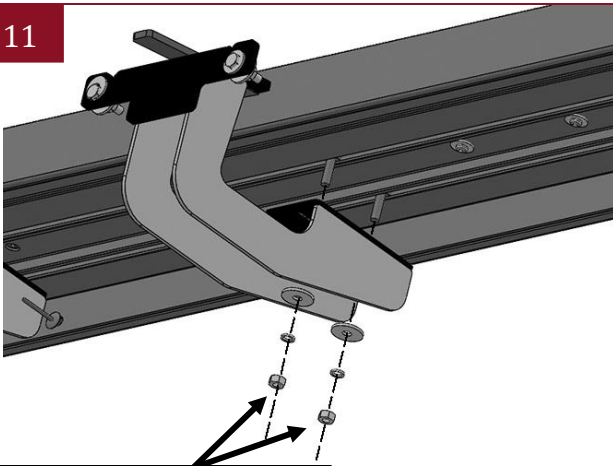


(Fig 10) Insert (6) T-Bolts into the bottom of the Running Board, (3) per channel

## STEP 9

Secure the Running Board to the Brackets with (6) 6mm x 22mm Large Flat Washers, (6) 6mm Lock Washers and (6) 6mm Hex Nuts, (Fig 11). Do not tighten hardware at this time.

FIG 11



(2) 6mm x 22mm Flat Washer  
 (2) 6mm Lock Washer  
 (2) 6mm Hex Nut

(Fig 11) Attach the Running Board on the (3) Mounting Brackets

## STEP 10

Adjust and level the Running Board and tighten all hardware. Reinstall the wiring harness.

## STEP 11

Repeat **Steps 1 – 10** for passenger/right Running Board installation. See important information in **Step 6**

## STEP 12

Do periodic inspections to the installation to make sure that all hardware is secure and tight.

### Attention

To protect your investment, do not use any type of polish or wax that may contain abrasives that could damage the finish.

Mild soap may be used also to clean the Running Boards.