



# COBRA RUNNING BOARD

PART #: TAC-HWB-019

**FITS:** 23-UP Honda Pilot



60-120 min



Cutting Required



Drilling Not Required

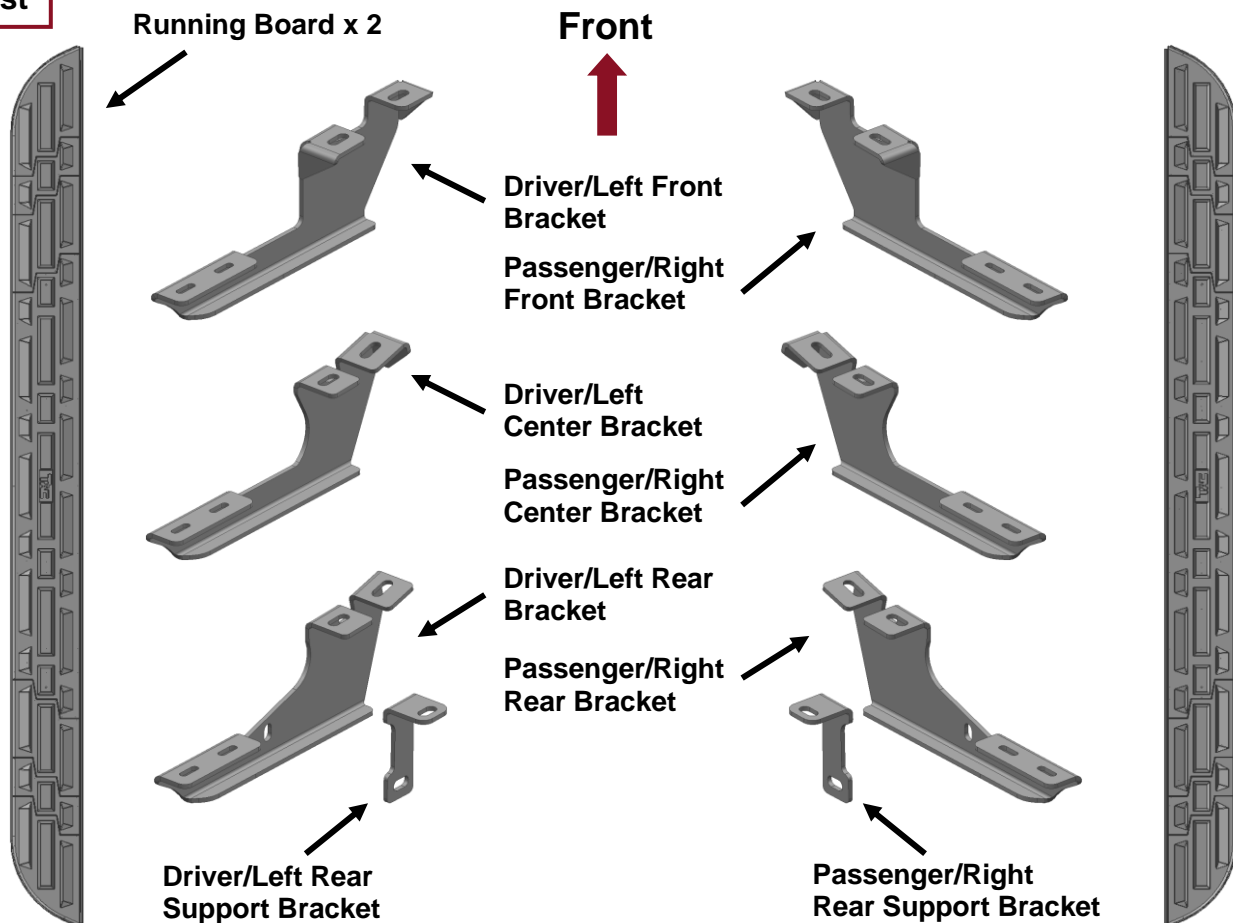
## Torque & Tools

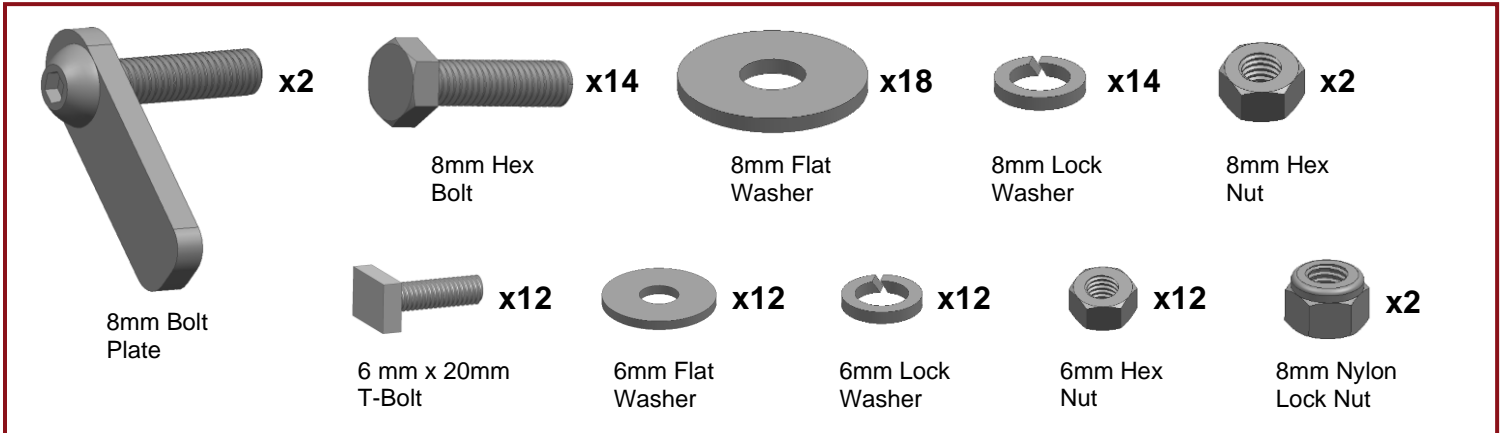
Fastener Size	Tightening Torque (ft-lbs)	Wrench Required		Allen Wrench Included	
			10mm		4mm
6mm	7-8.5		13mm		5mm
8mm	18-20		16mm		6mm
10mm	35-40		18mm		8mm
12mm	60-70				

### BEFORE INSTALLATION

REMOVE CONTENTS FROM BOX. VERIFY ALL PARTS ARE PRESENT. READ INSTRUCTIONS CAREFULLY BEFORE STARTING INSTALLATION. ASSISTANCE IS RECOMMENDED.

### Part List

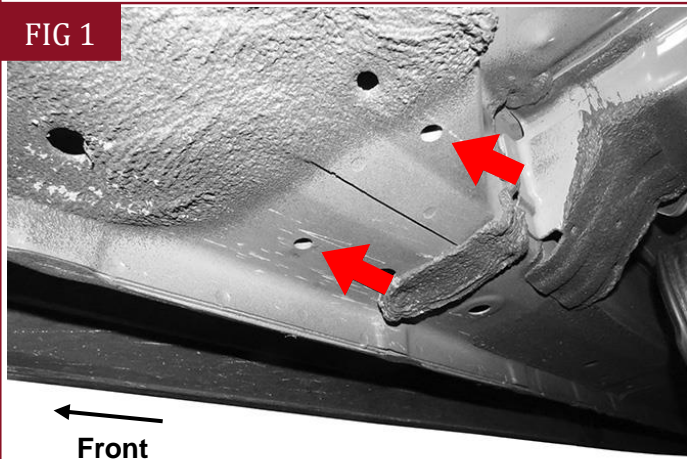




**PLEASE NOTE THAT THE FOLLOWING PICTURES ARE BASED ON THE PASSENGER SIDE INSTALLATION**

## STEP 1

Starting on the Passenger/Right side front of the vehicle and remove the plastic cover under the vehicle. Locate the two factory 8mm threaded holes in the bottom of the floor panel, (Fig 1). **NOTE: Brackets install in the factory running board mounting locations.** Threaded holes may be covered with insulation. Clean mounting locations as required for proper Bracket installation.

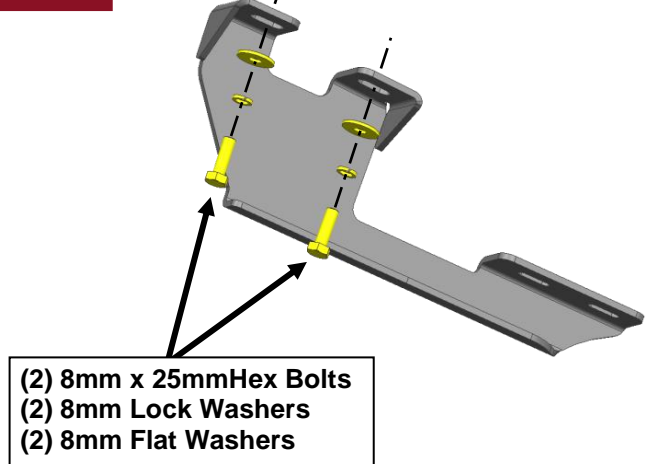


(Fig 1) Passenger/Right front mounting location (arrows)

## STEP 2

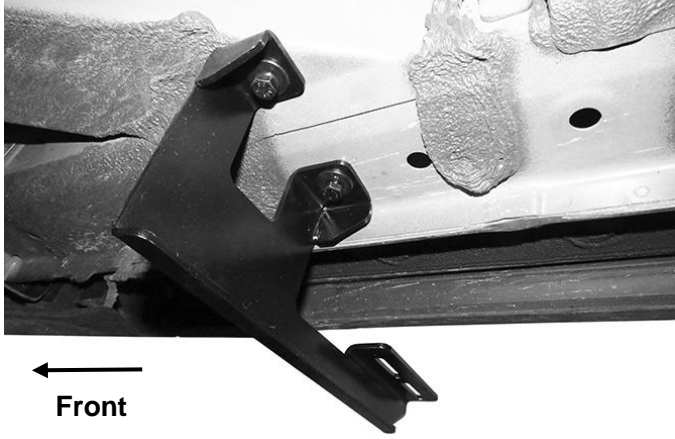
Select the Passenger/Right Front Bracket, (Fig 2). **NOTE: Brackets look similar but are all unique.** Attach the Bracket to the two threaded holes with (2) 8mm x 25mm Hex Bolts, (2) 8mm Lock Washers and (2) 8mm Flat Washers, (Figs 2 & 3). Do not tighten hardware at this time.

FIG 2



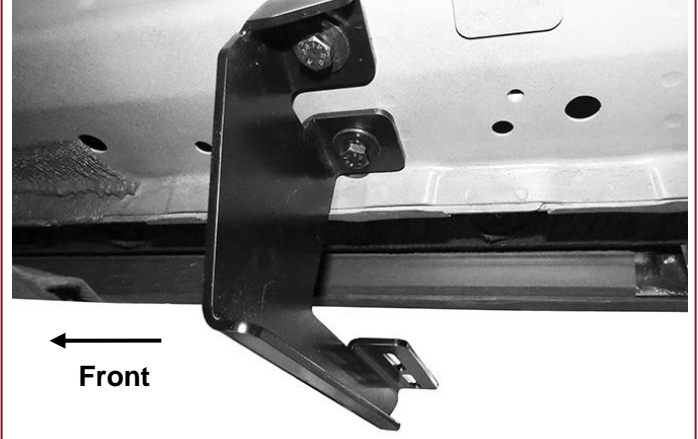
(Fig 2) Attach Passenger/Right Front Mounting Bracket to threaded holes

FIG 3



(Fig 3) Passenger/Right Front Mounting Bracket installed

FIG 5

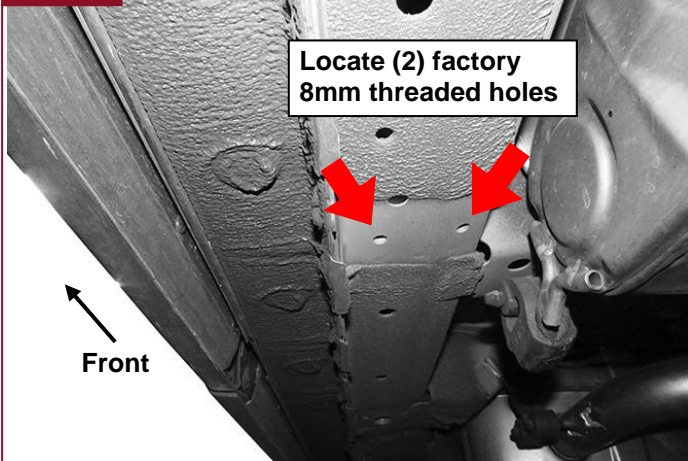


(Fig 5) Passenger/Right Center Mounting Bracket installed

## STEP 3

Move to the center of the vehicle. Locate the two threaded holes in the bottom of the floor panel and body support panel, (Fig 4). Repeat **Steps 1 & 2** to attach the Passenger/Right Center Bracket, (Fig 5).

FIG 4

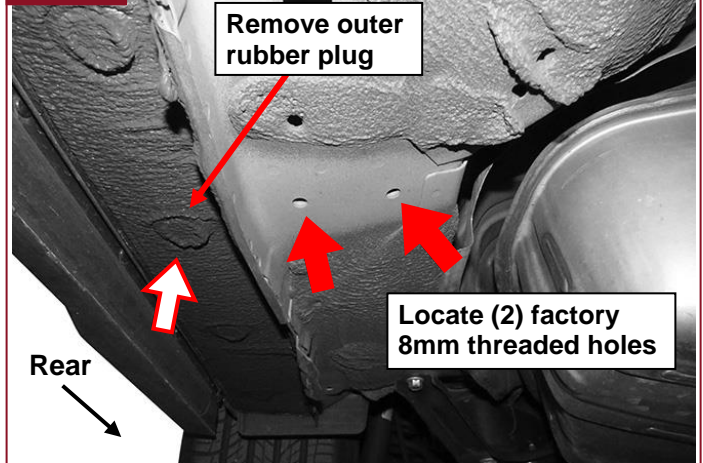


(Fig 4) Passenger/Right center mounting location (arrows)

## STEP 4

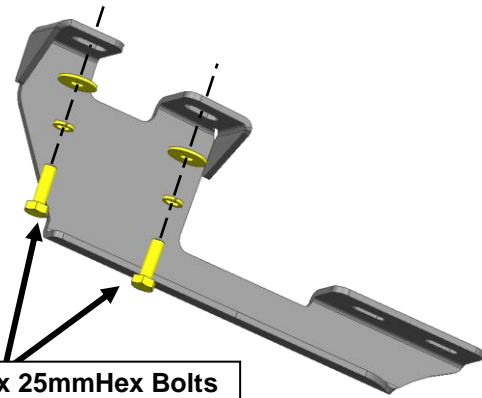
Next, move to the Passenger/Right rear of the vehicle. Locate the holes in the bottom and inner side of the floor panel, (Fig 6). Repeat **Steps 1 & 2** to install the Passenger/Right Rear Bracket, (Fig 7)

FIG 6



(Fig 6) Passenger/Right rear mounting location. Remove outer rubber plug (arrows)

FIG 7



(2) 8mm x 25mm Hex Bolts  
(2) 8mm Lock Washers  
(2) 8mm Flat Washers

(Fig 7) Attach Passenger/Right Rear Mounting Bracket to threaded holes

## STEP 5

Remove the rubber plug from the bottom of the outer body panel, (Fig 6). Insert the (1) 8mm Bolt Plate into the hole in the bottom of the body panel, (Fig 8).

FIG 8

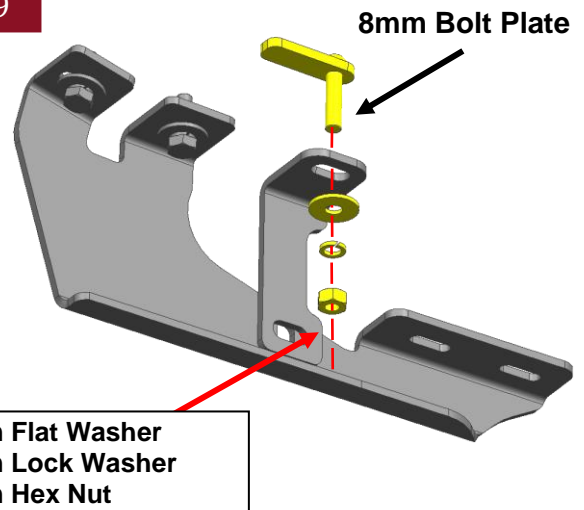


(Fig 8) Insert 8mm Bolt Plate into outer hole in body panel (also see Fig 6)

## STEP 6

Attach the Support Bracket to the Bolt Plate with the included (1) 8mm Flat Washer, (1) 8mm Lock Washer and (1) 8mm Hex Nut, (Fig 9). Attach the Support Bracket to the back of the Rear Mounting Bracket with (1) 8mm x 25mm Hex Bolt, (2) 8mm Flat Washers and (1) 8mm Nylon Lock Nut, (Figs 10 & 11). Do not tighten hardware.

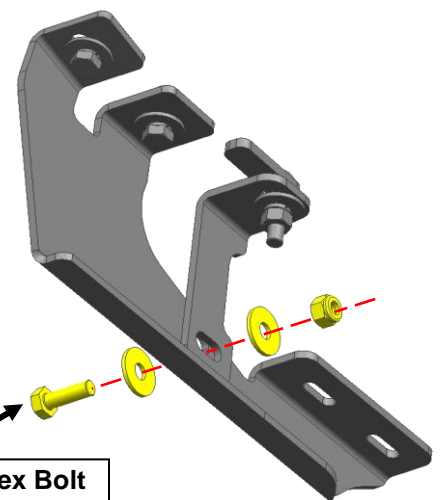
FIG 9



8mm Flat Washer  
8mm Lock Washer  
8mm Hex Nut

(Fig 9) Attach Passenger/Right rear Support Bracket to Bolt Plate

FIG 10



8mm x 25mm Hex Bolt  
(2) 8mm Flat Washers  
8mm Nylon Lock Nut

(Fig 10) Attach Passenger/Right rear Support Bracket to the rear facing side of the rear Mounting Bracket

FIG 11

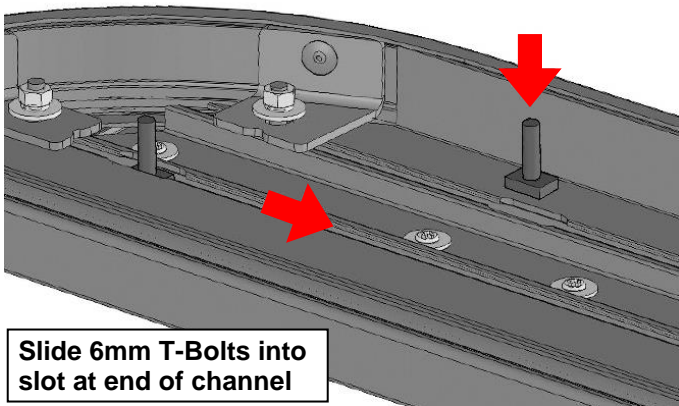


(Fig 11) Passenger/Right rear Mounting Bracket and Support Bracket installed

## STEP 7

Select (1) Running Board. Locate the openings cut at the end of the slots on the bottom of the Running Board, (Fig 12). Insert (3) 6mm T-Bolts into each channel through the openings. Slide the T-Bolts into the approximate position in line with the (3) Brackets on the vehicle.

FIG 12



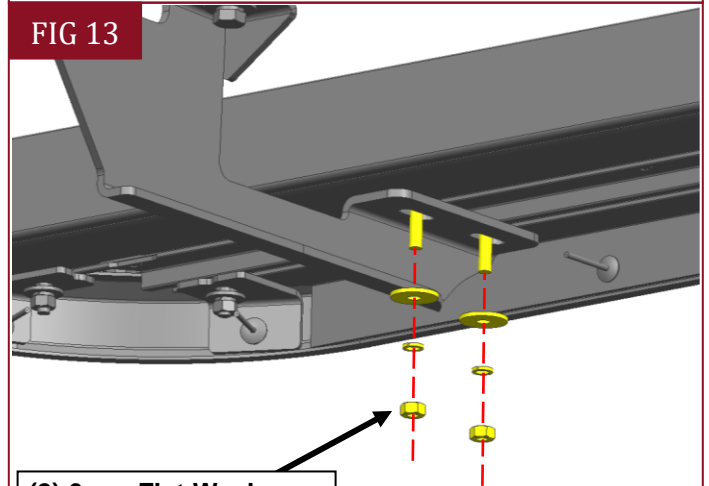
Slide 6mm T-Bolts into slot at end of channel

(Fig 12) Insert (6) T-Bolts into the bottom of the Running Board, (3) per channel

## STEP 8

Carefully position the Running Board onto the (3) Mounting Brackets. Slide the T-Bolts into position and through the slots in the Brackets. Attach the Board to the Brackets with (6) 6mm Flat Washers, (6) 6mm Lock washers and (6) 6mm Hex Nuts, (Fig 13). **NOTE:** Temporarily loosen Brackets if necessary to fit Running Board between Brackets and vehicle. Do not tighten hardware at this time.

FIG 13



(2) 6mm Flat Washers  
(2) 6mm Lock Washers  
(2) 6mm Hex Nuts

(Fig 13) Place Running Board on front Bracket. Slide T-Bolts into position. Guide T-Bolts down through Brackets

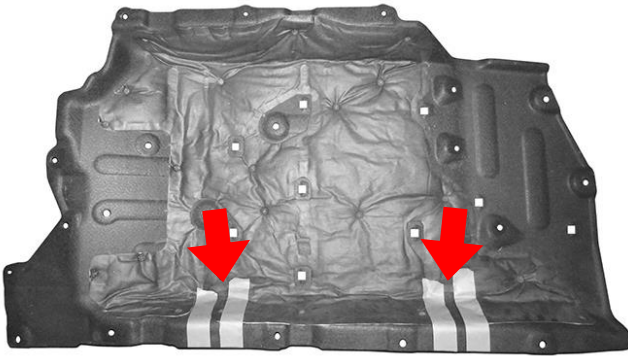
## STEP 9

Level and adjust the Running Board and fully tighten all hardware.

## STEP 10

Hold the plastic cover removed in **Step 1**, up to bottom of the Mounting Brackets. Mark the location of the Brackets onto the cover, (**Fig 14**). Use a knife or hacksaw blade to cut slots in the cover to clear the Brackets. Reinstall the plastic cover.

FIG 14



(Fig 14) Insert (6) T-Bolts into the bottom of the Running Board, (3) per channel

## STEP 11

Repeat **Steps 1—10** for the Driver/Left Running Board installation.

## STEP 12

Do periodic inspections to the installation to make sure that all hardware is secure and tight.

### Attention

To protect your investment, do not use any type of polish or wax that may contain abrasives that could damage the finish.

Mild soap may be used also to clean the Running Boards.