



# COBRA RUNNING BOARD

PART #: TAC-HWB-007

**FITS:** 2016-Up Honda Pilot



60-120 min



Cutting Not Required



Drilling Not Required

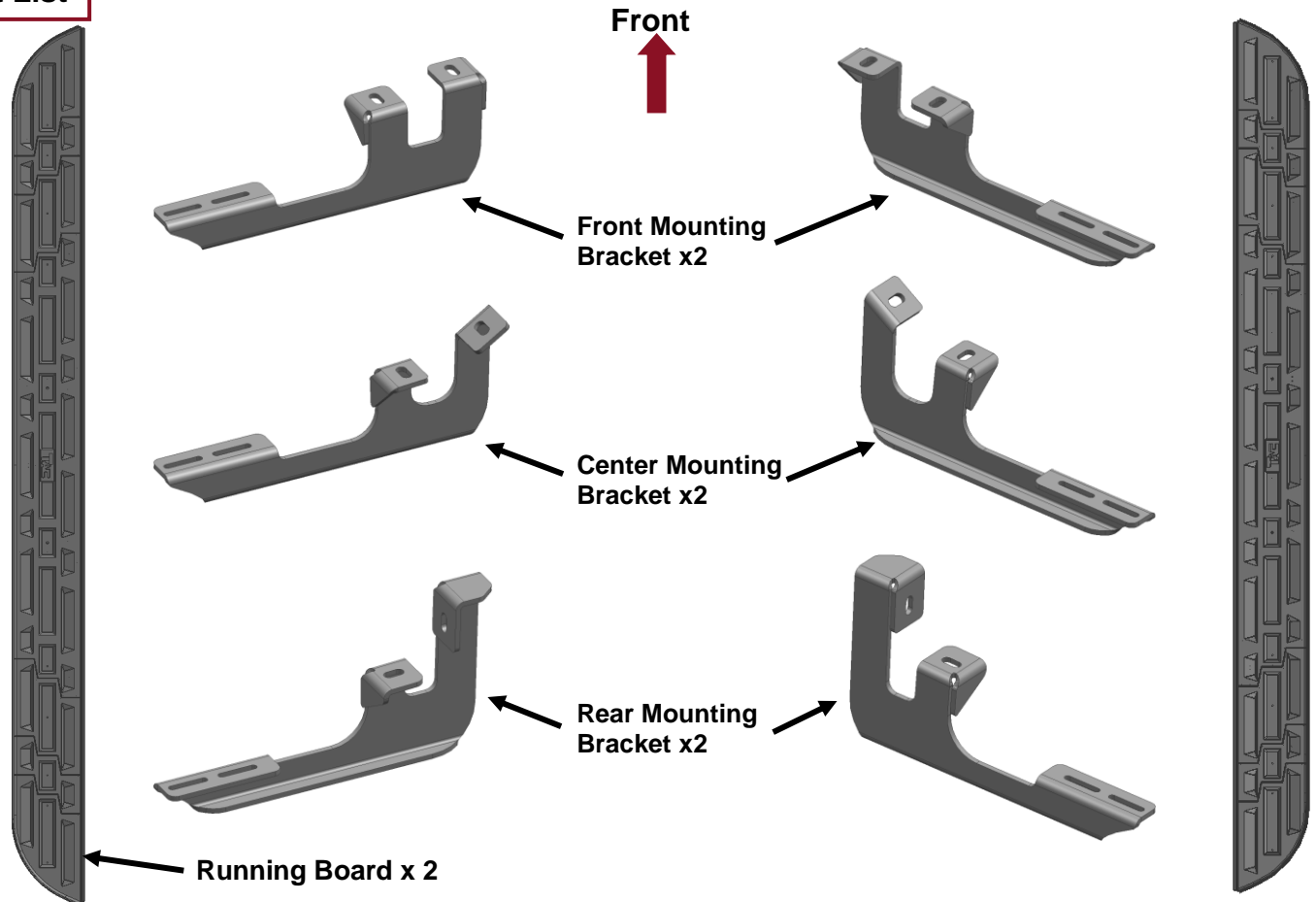
## Torque & Tools

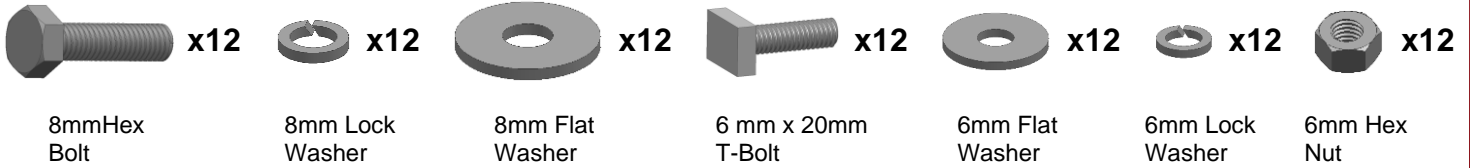
Fastener Size	Tightening Torque (ft-lbs)	Wrench Required		Allen Wrench Included	
			<input checked="" type="checkbox"/> 10mm		<input type="checkbox"/> 4mm
<input checked="" type="checkbox"/> 8mm	<input checked="" type="checkbox"/> 13mm		<input type="checkbox"/> 5mm		
<input type="checkbox"/> 10mm	<input type="checkbox"/> 16mm		<input type="checkbox"/> 6mm		
<input type="checkbox"/> 12mm	<input type="checkbox"/> 18mm		<input type="checkbox"/> 8mm		

### BEFORE INSTALLATION

REMOVE CONTENTS FROM BOX. VERIFY ALL PARTS ARE PRESENT. READ INSTRUCTIONS CAREFULLY BEFORE STARTING INSTALLATION. ASSISTANCE IS RECOMMENDED.

### Part List

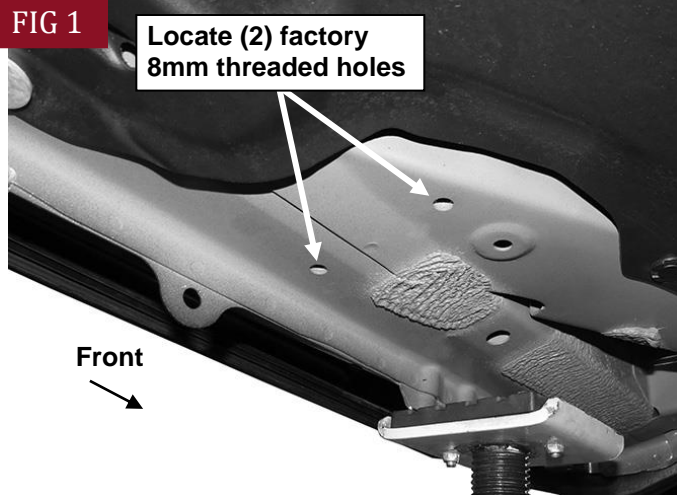




**PLEASE NOTE THAT THE FOLLOWING PICTURES ARE BASED ON THE DRIVER SIDE INSTALLATION**

## STEP 1

Starting on the driver/left side front of the vehicle, locate the two factory 8mm threaded holes located in the bottom of the floor panel, **(Fig 1)**. **NOTE: Brackets install in the factory running board mounting locations. Threaded holes may be covered with insulation. Clean mounting locations as required for proper Bracket installation.**

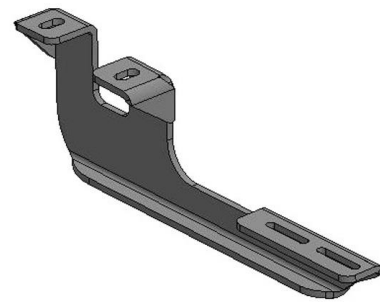


**(Fig 1) Driver side front mounting location**

## STEP 2

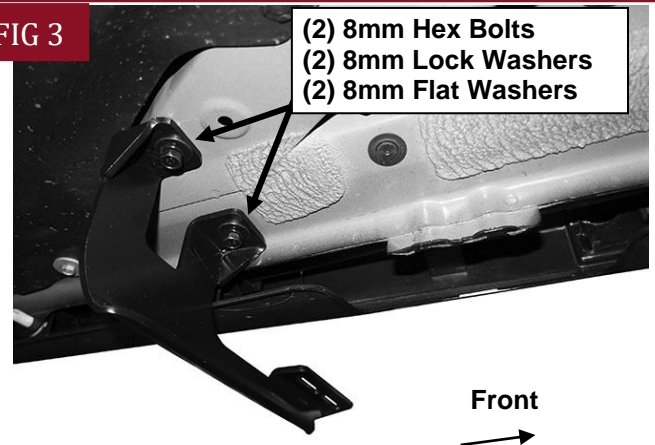
Select (1) Front Mounting Bracket, **(Fig 2)**. **NOTE: Brackets will fit left or right side.** Attach the Bracket to the two threaded holes with (2) 8mm x 25mm Hex Bolts, (2) 8mm Lock Washers and (2) 8mm Flat Washers, **(Fig 3)**. Do not tighten hardware at this time.

**FIG 2**



**(Fig 2) Front Bracket (left same as right)**

**FIG 3**

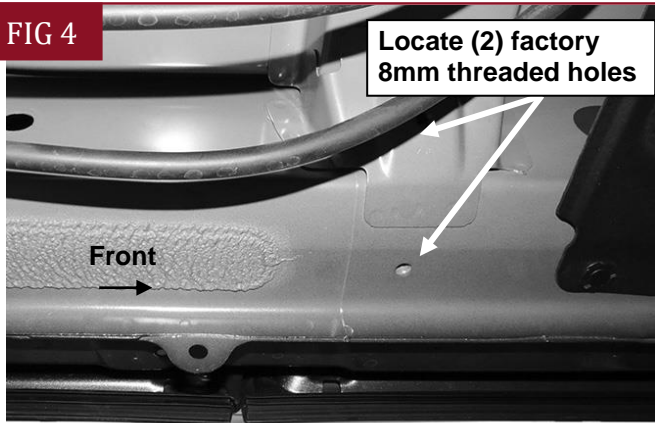


**(Fig 3) Front Bracket Attached (Driver Side)**

## STEP 3

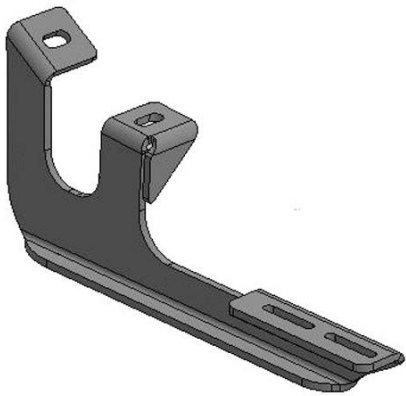
Move to the center of the vehicle. Locate the two threaded holes in the bottom of the floor panel and body support panel, **(Fig 4)**. Repeat **Steps 1 & 2** to attach (1) Center Bracket, **(Figs 5 & 6)**.

FIG 4



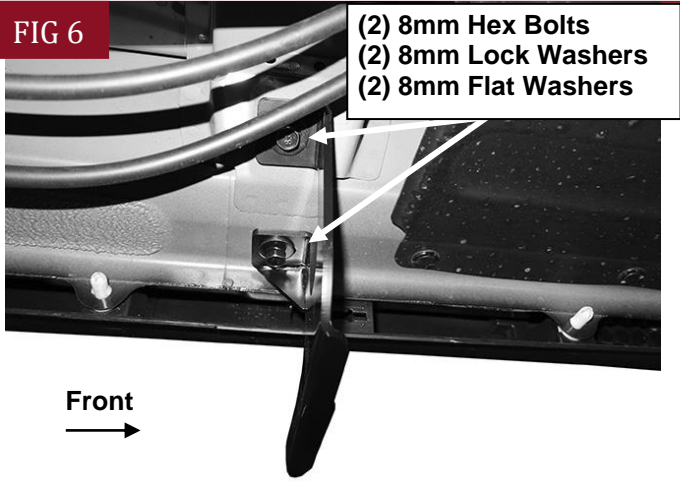
(Fig 4) Driver side center mounting location

FIG 5



(Fig 5) Center Bracket (left same as right)

FIG 6

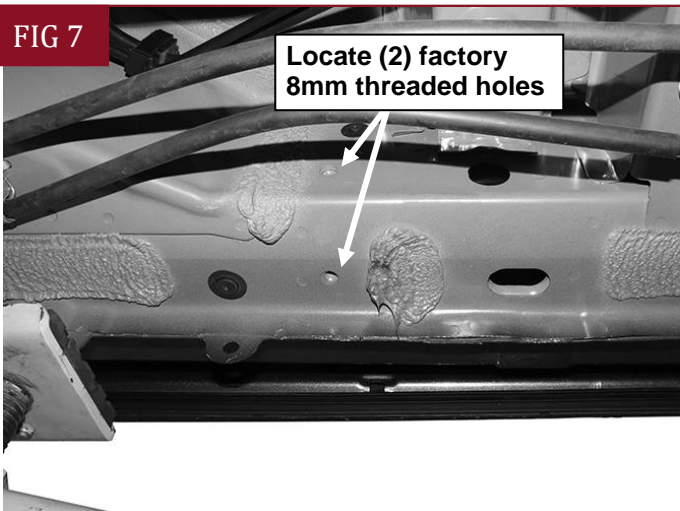


(Fig 6) Center Bracket Attached (Driver Side)

## STEP 4

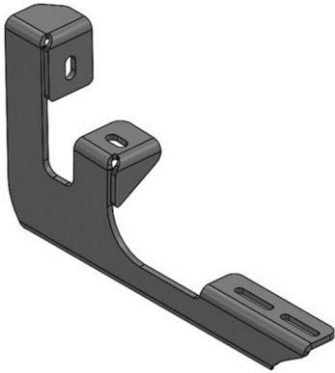
Next, move to the driver/left rear of the vehicle. Locate the holes in the bottom and inner side of the floor panel, **(Fig 7)**. Repeat **Steps 1 & 2** to install (1) Rear Bracket, **(Figs 8 & 9)**

FIG 7



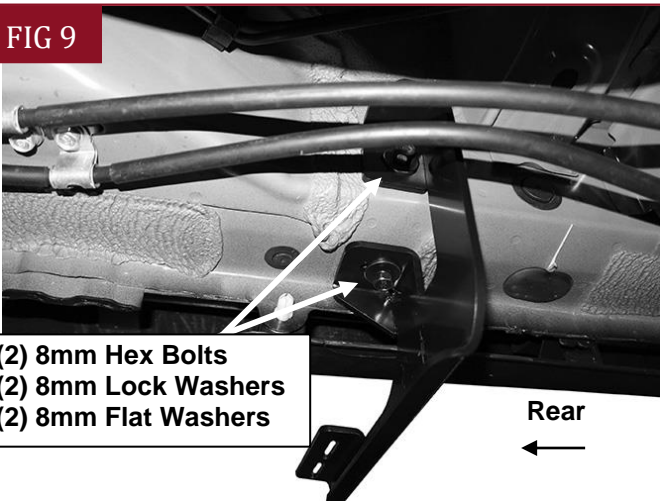
(Fig 7) Driver side rear mounting location

FIG 8



(Fig 8) Rear Bracket (left same as right)

FIG 9

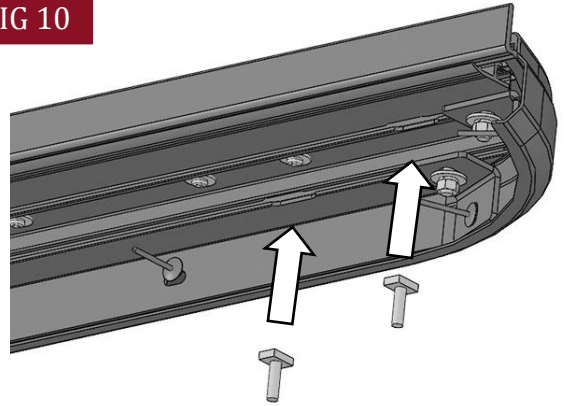


(Fig 9) Rear Bracket Attached (Driver Side)

## STEP 5

Select the driver/left side Running Board. Locate the openings cut at the end of the slots on the bottom of the Running Board, (Fig 10). Insert (3) 6mm T-Bolts into each channel through the openings. Slide the T-Bolts into the approximate position in line with the (3) Brackets on the vehicle.

FIG 10

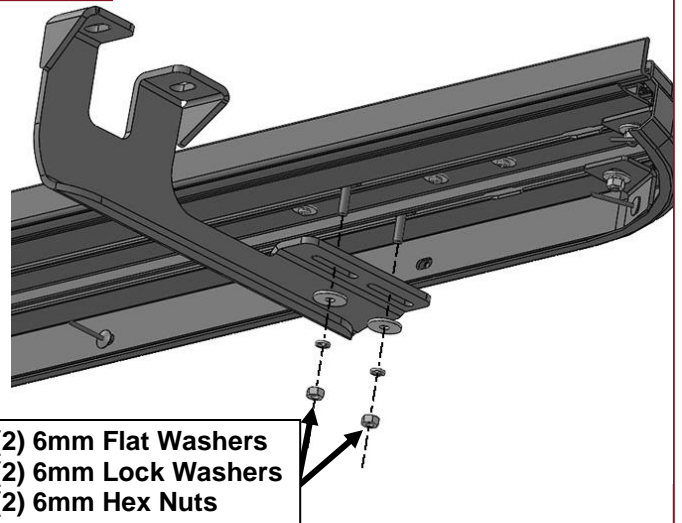


(Fig 10) Insert (6) T-Bolts into the bottom of the Running Board, (3) per channel

## STEP 6

Carefully position the Driver/Left Running Board onto the (3) Mounting Brackets. Slide the T-Bolts into position and through the slots in the Brackets. Attach the Board to the Brackets with (6) 6mm Flat Washers, (6) 6mm Lock washers and (6) 6mm Hex Nuts, (Fig 11). **NOTE: Temporarily loosen Brackets if necessary to fit Running Board between Brackets and vehicle.** Do not tighten hardware at this time.

FIG 11



(Fig 11) Attach (1) Running Board to the (3) Mounting Brackets

---

## STEP 7

Level and adjust the Running Board and tighten all hardware.

---

## STEP 8

Repeat **Steps 1—7** for the passenger/right Running Board installation.

---

## STEP 9

Do periodic inspections to the installation to make sure that all hardware is secure and tight.

### Attention

To protect your investment, do not use any type of polish or wax that may contain abrasives that could damage the finish.

Mild soap may be used also to clean the Running Boards.