



# COBRA RUNNING BOARD

PART #: TAC-HWB-006

**FITS:** 2009-2015 Honda Pilot



60-120 min



Cutting Not Required



Drilling Not Required

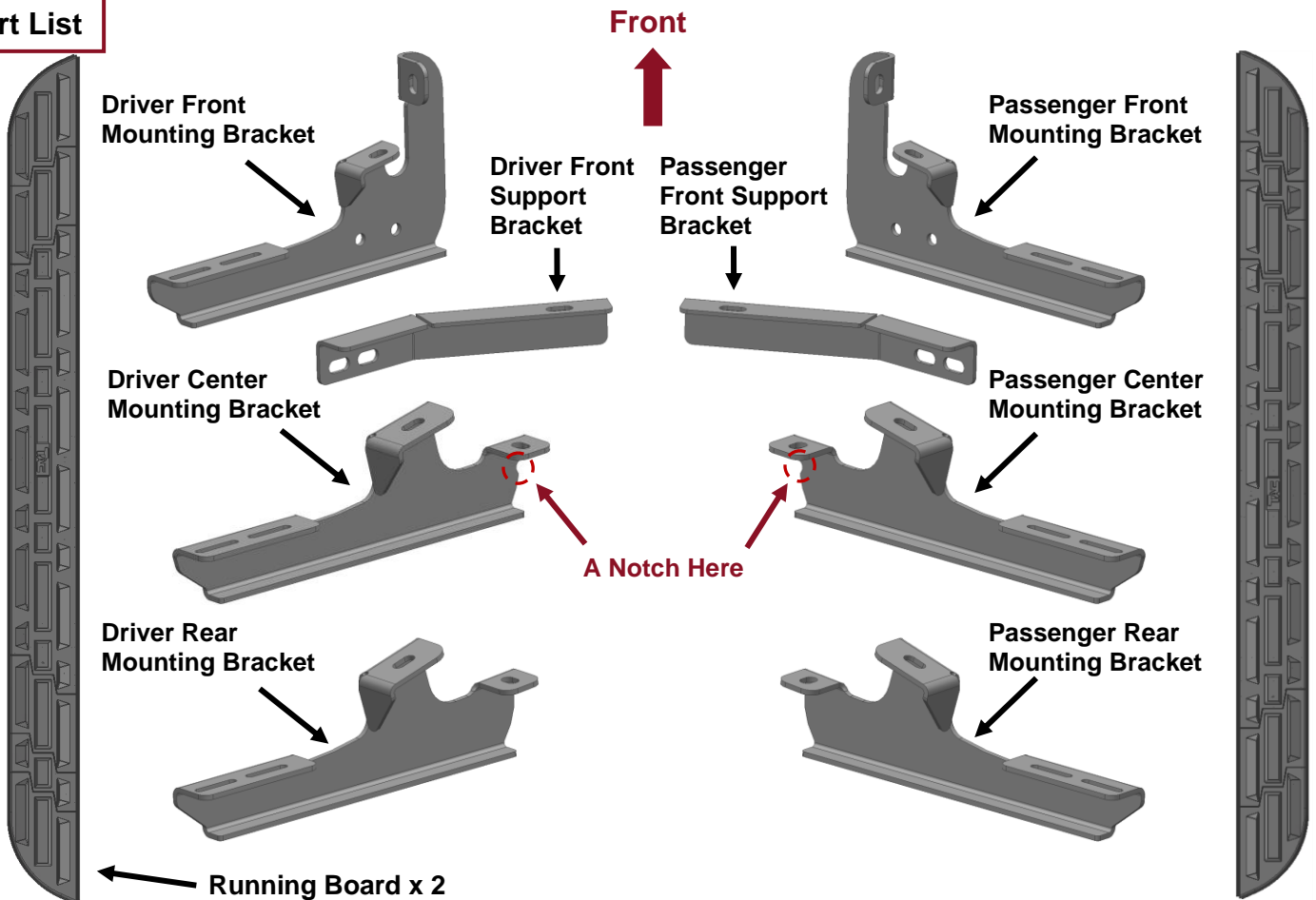
## Torque & Tools

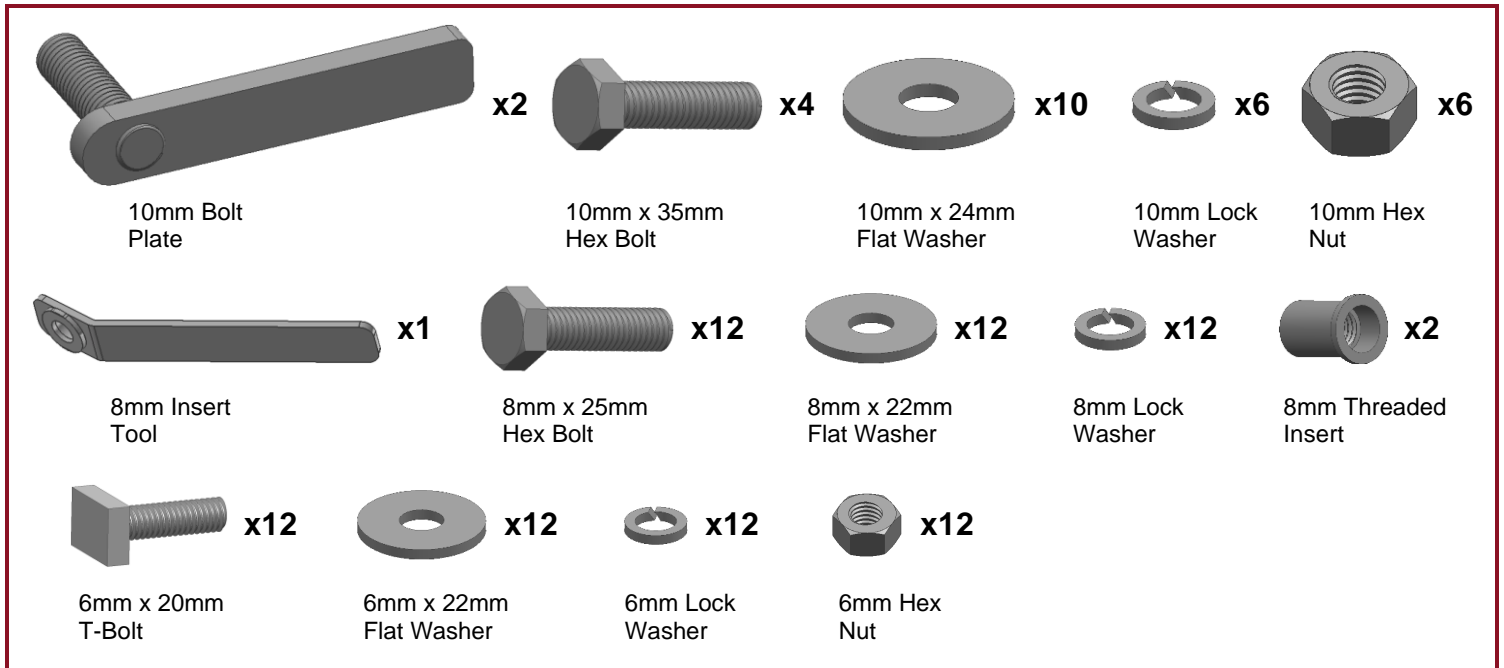
Fastener Size	Tightening Torque (ft-lbs)	Wrench Required		Allen Wrench Included	
			<input checked="" type="checkbox"/> 10mm <input checked="" type="checkbox"/> 13mm <input checked="" type="checkbox"/> 16mm <input type="checkbox"/> 18mm		<input type="checkbox"/> 4mm <input type="checkbox"/> 5mm <input type="checkbox"/> 6mm <input type="checkbox"/> 8mm
<input checked="" type="checkbox"/> 6mm	<input checked="" type="checkbox"/> 7-8.5				
<input checked="" type="checkbox"/> 8mm	<input checked="" type="checkbox"/> 18-20				
<input checked="" type="checkbox"/> 10mm	<input checked="" type="checkbox"/> 35-40				
<input type="checkbox"/> 12mm	<input type="checkbox"/> 60-70				

## BEFORE INSTALLATION

REMOVE CONTENTS FROM BOX. VERIFY ALL PARTS ARE PRESENT. READ INSTRUCTIONS CAREFULLY BEFORE STARTING INSTALLATION. ASSISTANCE IS RECOMMENDED.

## Part List

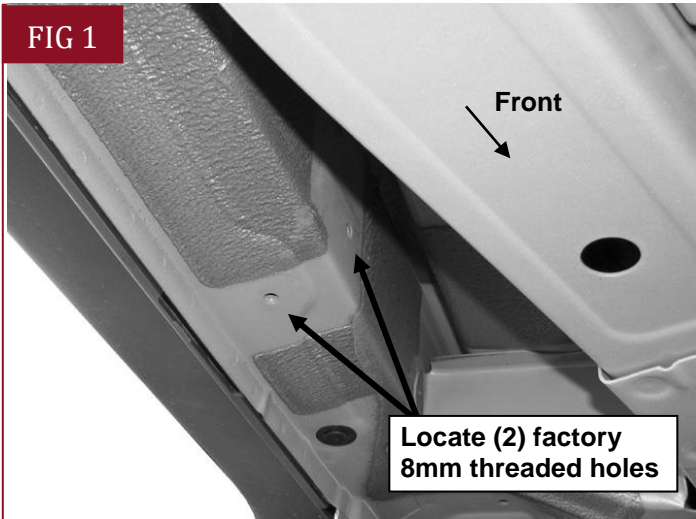




**PLEASE NOTE THAT THE FOLLOWING PICTURES ARE BASED ON THE DRIVER SIDE INSTALLATION**

## STEP 1

Starting on the driver side of the vehicle, locate the two factory 8mm threaded holes, one located in the bottom of the floor panel and the second in the side of the inner body panel, (Fig 1). **IMPORTANT:** All factory threaded holes may be covered with rubber plugs or undercoating. Scrape off any excess undercoating from mounting surfaces.

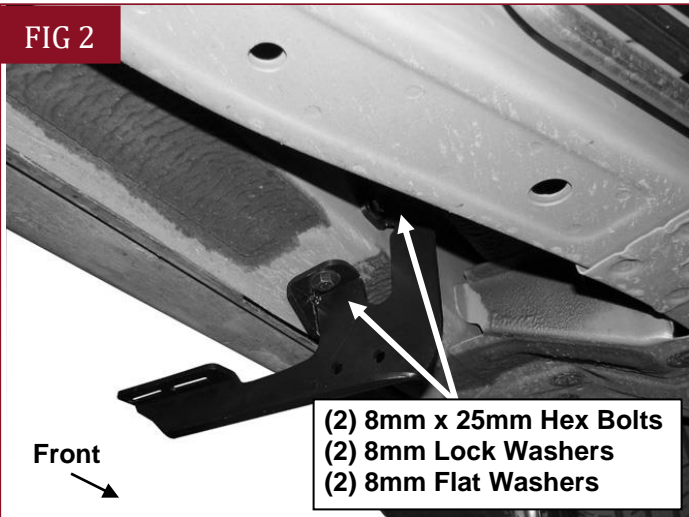


(Fig 1) Driver side front mounting location pictured

## STEP 2

Select the driver side Front Mounting Bracket. Attach the Bracket to the two threaded holes using the provided (2) 8mm x 25mm Hex Bolts, (2) 8mm Lock Washers and (2) 8mm Flat Washers. Snug but do not tighten hardware at this time, (Fig 2).

FIG 2

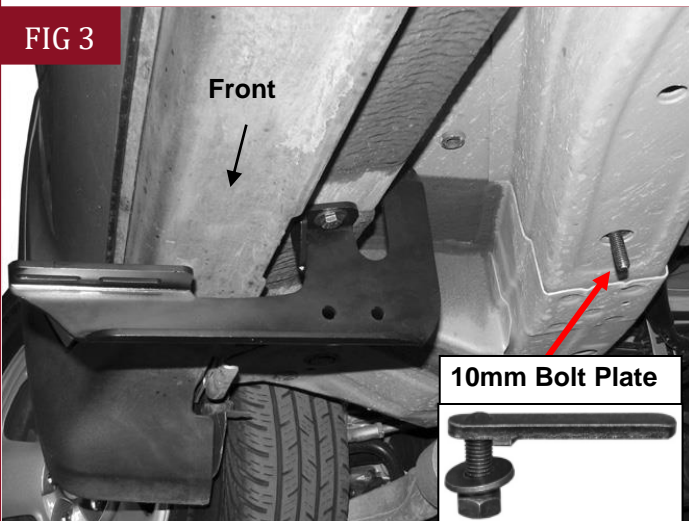


(Fig 2) Attach the Driver side Front Mounting Bracket to the floor panel

## STEP 3

Select (1) 10mm Bolt Plate, (Fig 3). Insert the Bolt Plate into the factory hole in the bottom of the frame channel, (Fig 3). Rotate the Bolt Plate clock-wise 90-degrees or until it stops turning. **NOTE:** To help determine the correct inner mounting hole on the frame to use, hold the Support Bracket up to the back of the Front Bracket with the inner end lined up with the hole in the bottom of the frame channel, (Fig 4).

FIG 3

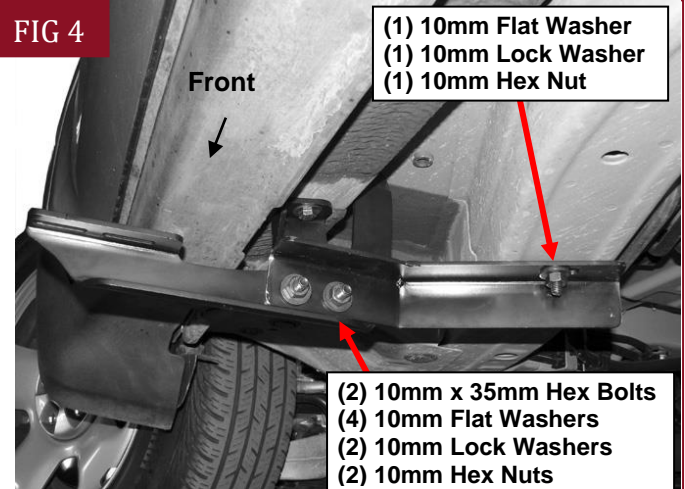


(Fig 3) Driver side center mounting location

## STEP 4

Bolt the driver side Support Bracket to the back of the front Mounting Bracket with (2) 10mm x 35mm Hex Bolts, (4) 10mm Flat Washers, (2) 10mm Lock Washers and (2) 10mm Hex Nuts, (Fig 4). Next, hang the inner end of the Support Bracket from the previously installed Bolt Plate using (1) 10mm Flat Washer, (1) 10mm Lock Washer and (1) Hex Nut. Do not fully tighten hardware at this time.

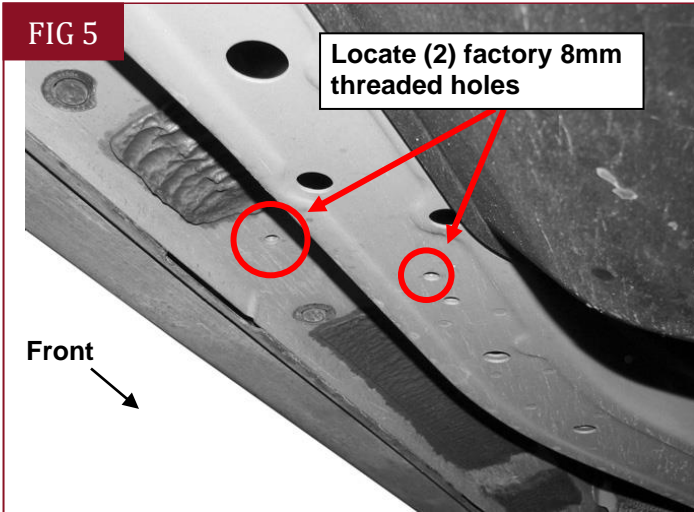
FIG 4



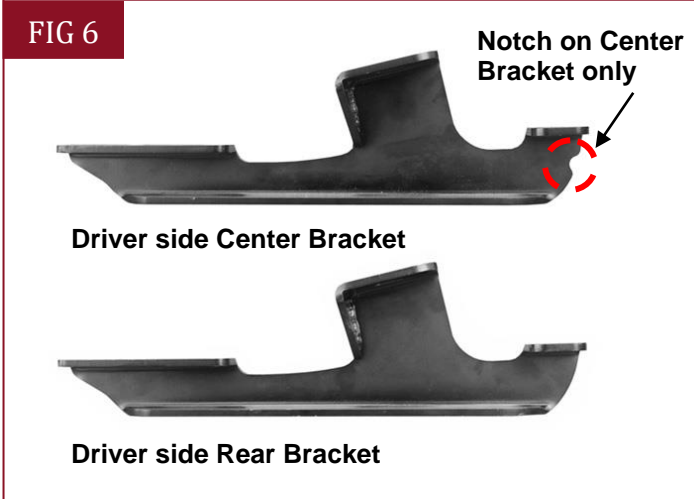
(Fig 4) Driver side front mounting bracket and support bracket attached

## STEP 5

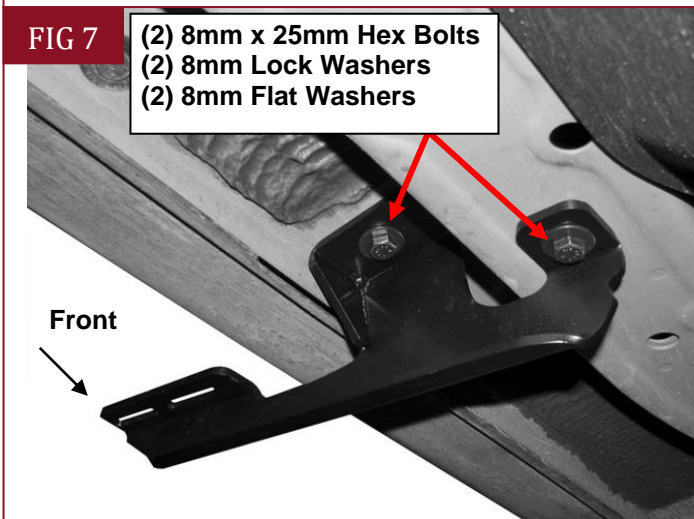
Next, move to the center of the vehicle and locate the (2) 8mm threaded holes located on the bottom of the floor panel and bottom of the frame channel, (Fig 5). Select the driver side Center Mounting Bracket, (Fig 6). **IMPORTANT:** Center and Rear Brackets are similar but unique. To help identify, the Center Brackets feature a notch cut out of the inner end of the Bracket, (Fig 6). Attach the Center Bracket to the two threaded holes using the provided (2) 8mm x 25mm Hex Bolts, (2) 8mm Lock Washers and (2) 8mm Flat Washers, (Fig 7). Snug but do not tighten hardware at this time.



(Fig 5) Driver side center mounting location



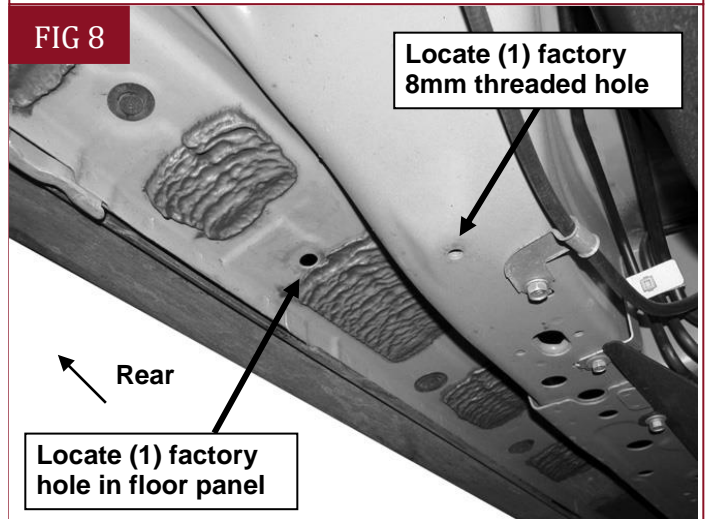
(Fig 6) The Center Bracket and Rear Bracket are similar but unique



(Fig 7) Driver side Center Bracket installed pictured

## STEP 6

Continue along the side of the vehicle to the rear mounting location. Locate the 8mm threaded hole in the bottom of the frame channel, (Fig 8). Locate the factory hole in the bottom of the floor panel. Remove rubber plugs as necessary. **NOTE:** To determine the correct mounting holes to use, hold the driver side rear Mounting Bracket up in position against the factory threaded hole in the end of the frame channel, (Fig 8). Remaining hole in mounting tab on the bracket will line up with correct factory hole in floor panel.

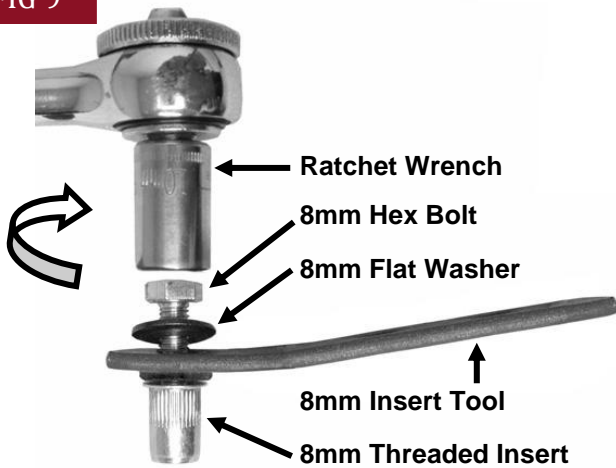


(Fig 8) Driver side rear mounting location pictured

## STEP 7

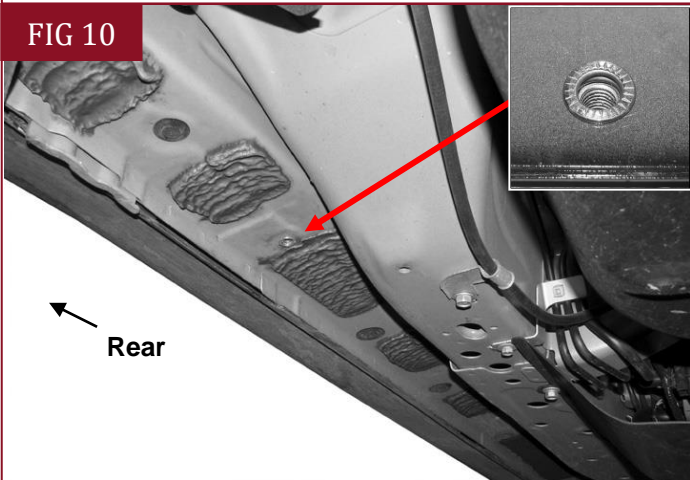
Select the 8mm Threaded Insert Tool, (1) 8mm Threaded Insert, (1) 8mm Flat Washer and (1) 8mm x 25mm Hex Bolt, (Fig 9). Assemble the tool as pictured in Fig 9. Insert the assembly into the factory hole. Firmly hold the tool handle and assembly up tight against the floor panel and tighten the 8mm Hex Bolt until the insert is fully expanded in the hole, (Fig 10). **NOTE:** Do not over tighten or a pull out may occur. Once Insert is fully compressed, remove the bolt and tool from the Insert.

FIG 9



(Fig 9) Threaded Insert tool assembly

FIG 10

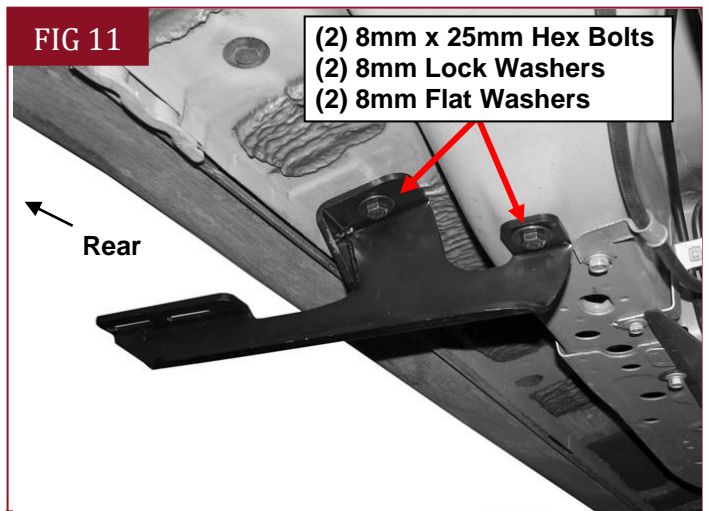


(Fig 10) 8mm Threaded Insert fully installed

## STEP 8

Attach the driver side Rear Bracket to the (2) threaded holes with (2) 8mm x 25mm Hex Bolts, (2) 8mm Lock Washers and (2) 8mm Flat Washers, (Fig 11). Do not tighten hardware at this time.

FIG 11

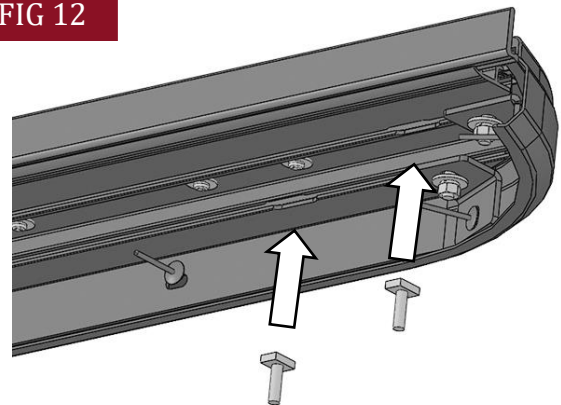


(Fig 11) Driver side Rear Bracket attached

## STEP 9

Select the driver/left side Running Board. Locate the openings cut at the end of the slots on the bottom of the Running Board, (Fig 12). Insert (3) 6mm T-Bolts into each channel through the openings. Slide the T-Bolts into the approximate position in line with the (3) Brackets on the vehicle.

FIG 12

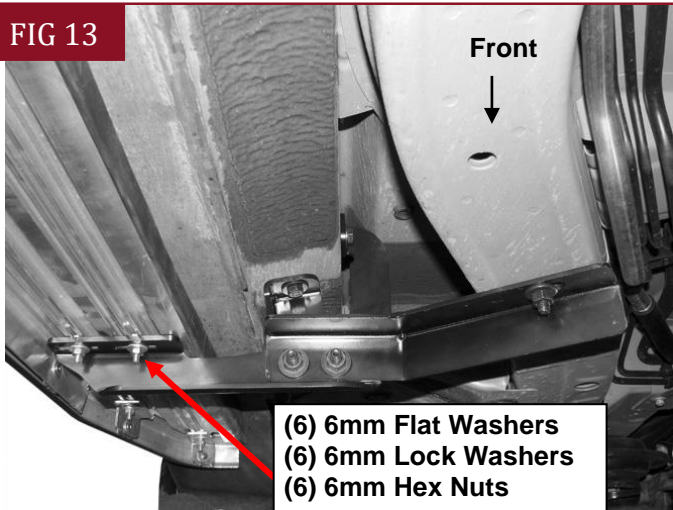


(Fig 12) Insert (6) T-Bolts into the bottom of the Running Board, (3) per channel

## STEP 10

Carefully position the Driver/Left Running Board onto the (3) Mounting Brackets. Slide the T-Bolts into position and through the slots in the Brackets. Attach the Board to the Brackets with (6) 6mm Flat Washers, (6) 6mm Lock washers and (6) 6mm Hex Nuts, (**Fig 13**). Do not tighten hardware at this time.

FIG 13



(Fig 13) Attach the running board to the brackets

## STEP 11

Level and adjust the Running Board and tighten all hardware.

## STEP 12

Repeat **Steps 1 - 11** for the passenger/right Running Board installation.

## STEP 13

Do periodic inspections to the installation to make sure that all hardware is secure and tight.

### Attention

To protect your investment, do not use any type of polish or wax that may contain abrasives that could damage the finish.

Mild soap may be used also to clean the Running Boards.