

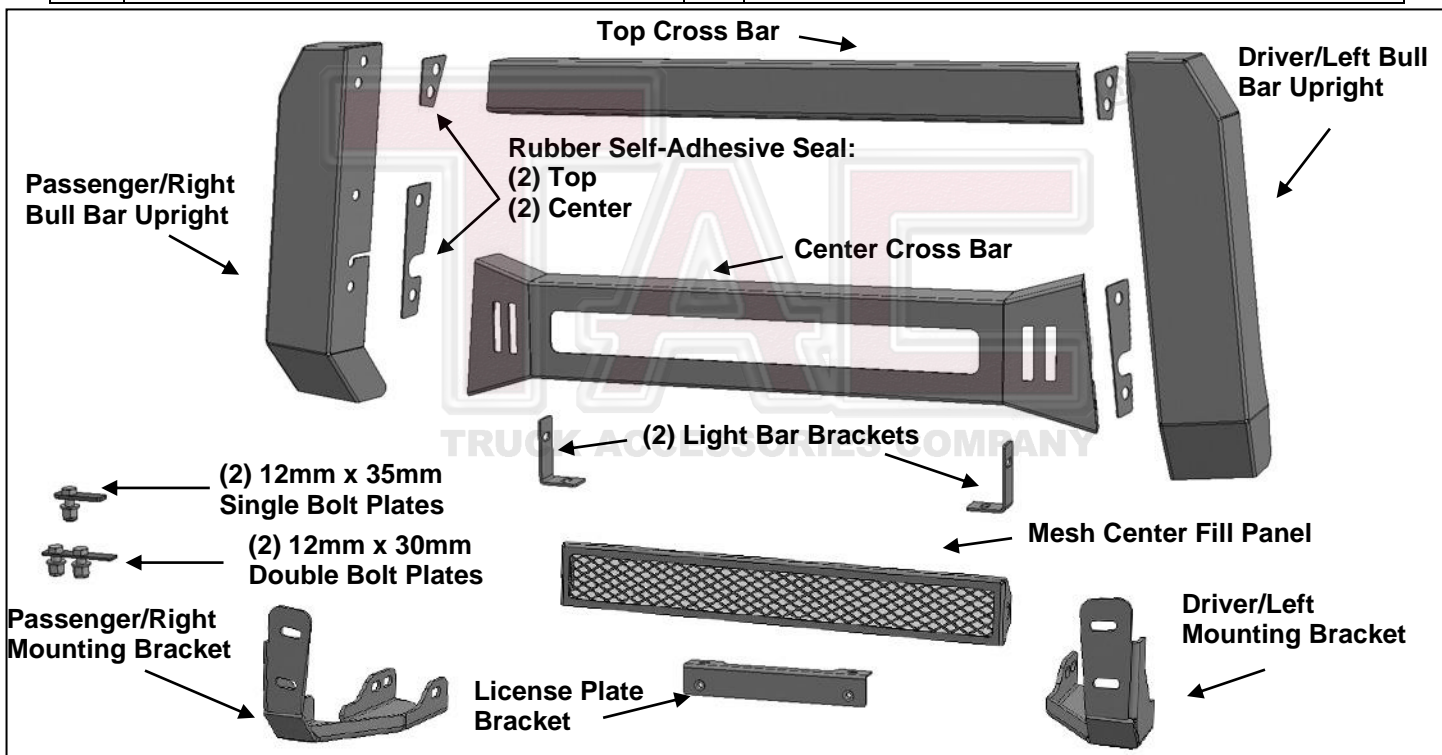


## **INSTALLATION INSTRUCTIONS**

**MESH EC1 MODULAR BULL BAR**  
**2019-2024 CHEVY SILVERADO 1500**  
**(Excluding Diesel Engine with Tow Hooks Models)**  
**PART# EC1-19C106TM**

**PARTS LIST:**

1	Driver/Left Side Bull Bar Upright	12	10-1.5mm x 25mm Hex Bolts
1	Passenger/Right Side Bull Bar Upright	4	10mm x 30mm x 3mm Flat Washers
1	Top Cross Bar	16	10mm x 20mm x 2mm Flat Washers
1	Center Cross Bar	12	10mm Lock Washers
1	Driver/Left Side Bracket	8	10-1.5mm Hex Nuts
1	Passenger/Right Side Bracket	4	8-1.25mm x 25mm Hex Bolts
1	Mesh Fill Panel	2	8-1.25mm x 16mm Hex Bolts
2	LED Light Brackets	8	8mm x 24mm x 2mm Flat Washers
1	License Plate Bracket	4	8mm Lock Washers
2	Black Rubber Self-Adhesive Top Seal	4	8mm Hex Nuts
2	Black Rubber Self-Adhesive Center Seal	2	6-1.0mm x 20mm Button Head Combo Bolts
2	12-1.75mm x 30mm Double Bolt Plates	2	6-1.0mm x 20mm Button Head Bolts
2	12-1.75mm x 35mm Single Bolt Plates	4	6mm x 18mm x 1.6mm Flat Washers
6	12mm x 24mm OD x 2.5mm Flat Washers	2	6mm Lock Washers
6	12mm Nylon Lock Nuts	2	6mm Hex Nuts
		1	4mm Wrench



**PROCEDURE:**

**REMOVE CONTENTS FROM BOX AND VERIFY ALL PARTS ARE PRESENT. READ INSTRUCTIONS CAREFULLY. CUTTING MAY BE REQUIRED. ASSISTANCE IS RECOMMENDED. INSTALLATION MAY INTERFERE WITH FRONT MOUNTED SENSORS.**

1. Remove the factory tow hooks and hardware if equipped, (Figures 1—3). **IMPORTANT:** Tow hooks cannot be reinstalled with the Bull Bar.

**Vehicles without tow hooks:**

- a. Cut out the indented area in both sides of the plastic bumper insert to clear the Brackets as pictured, (Figures 4 & 5). **IMPORTANT:** Make several small cuts for best fit. Do not cut through the top or bottom edge of the panel.
2. Select the driver/left Mounting Bracket, (Figure 8). Insert the Bracket through the opening in the bumper, (Figures 3 & 4). **NOTE:** Trim the opening to clear the Bracket as needed. Line up the holes in the Bracket

- with the holes in the end of the frame for the tow hook. Select (1) 12mm Double Bolt Plate, **(Figure 6)**. Insert the Double Bolt Plate into the end of the frame, through the (2) holes in the side of the frame and out through the Bracket, **(Figures 8, 9B & 10)**. Attach the Bracket to the Bolt Plate with (2) 12mm Flat Washers and (2) 12mm Nylon Nuts. Do not fully tighten hardware at this time.
3. Select (1) 12mm Single Bolt Plate, **(Figure 7)**. Attach the Bracket to the Bolt Plate with (1) 12mm Flat Washer and (1) 12mm Nylon Lock Nut, **(Figures 8, 9A & 10)**. Snug but do not tighten at this time.
  4. Repeat **Steps 1—3** to install the passenger/right Mounting Bracket.
  5. Select the passenger/right Bull Bar Upright and the Top Cross Bar. Insert the Black Rubber Self-Adhesive Top Seal between the Upright and Top Cross Bar. Attach the Cross Bar to the Upright with the included (2) 10mm x 25mm Hex Bolts, (4) 10mm x 20mm Flat Washers, (2) 10mm Lock Washers and (2) 10mm Hex Nuts, **(Figure 11)**. Do not fully tighten hardware.
  6. Select the Center Cross Bar. Insert the longer Black Rubber Self-Adhesive Center Seal between the Upright and the Center Cross Bar. Repeat **Step 5** to attach the Center Cross Bar to the Upright, **(Figure 11)**. Do not fully tighten hardware.
  7. Repeat **Steps 5 & 6** to attach the driver/left Upright to the Top Cross Bar and Center Cross Bar. Place assembled Bull Bar face down on a clean flat surface and fully tighten assembly hardware only.
  8. **Relocation of front license plate may be necessary.**
    - a. Attach the License Plate Bracket to the bottom of the Center Cross Bar with (2) 6mm Button Head Bolts, (4) 6mm Flat Washers, (2) 6mm Lock Washers and (2) 6mm Hex Nuts, **(Figure 12)**.
    - b. Attach license plate to Bracket with (2) 6mm Button Head Combo Bolts, **(Figure 12)**.
  9. **LED light installation, (optional-light available separately).**
    - a. Start at the driver/left side of the vehicle. Select (1) Light Bar Bracket. Attach the Bracket to the slot in the back of the Center Cross Bar with (1) 8mm x 25mm Hex Bolt, (2) 8mm Flat Washers, (1) 8mm Lock Washer and (1) 8mm Hex Nut, **(Figure 13)**. **NOTE:** Check for clearance between the Hex Bolt and the bottom of the Light. If necessary, insert the Hex Bolts down through the Brackets then through slots in the Cross Bar. Leave hardware loose at this time.
    - b. Repeat the previous **Step** to attach the passenger/right Light Bracket.
    - c. If needed, use the included (2) 8mm x 16mm Hex Bolts, (2) 8mm Lock Washers and (2) 8mm Flat Washers to attach the LED light bar to the Brackets, **(Figure 13)**.
    - d. Follow light manufacturer's instructions to properly wire the light bar to the electrical system.
    - e. Proceed to **Step 11**.
  10. **Center Screen Fill Panel Installation, (cannot be installed with LED light).**
    - a. Select (1) "L" Light Bar Bracket. Attach the Bracket to the outside of the tab on the Center Screen Fill Panel with (1) 8mm x 25mm Hex Bolt, (2) 8mm Flat Washers, (1) 8mm Lock Washer and (1) 8mm Hex Nut, **(Figure 14)**. **NOTE:** Insert the Hex Bolt through the tab on the Panel and out through the Bracket. Repeat to attach the remaining Bracket to the end of the Fill Panel. Leave hardware loose at this time.
    - b. Attach the Fill Panel with Brackets to the slots in the back of the Center Cross Bar with (2) 8mm x 25mm Hex Bolts, (4) 8mm 24mm Flat Washers, (2) 8mm Lock Washers and (2) 8mm Hex Nuts, **(Figure 14)**. **NOTE:** Insert the Hex Bolts up through the bottom of the Cross Bar first.
    - c. Push the Fill Panel up tight against the inside of the opening and fully tighten hardware.
  11. With assistance, hold the assembled Bull Bar up to the Bull Bar Brackets. Align the center (2) mounting holes located on the back of each Upright with the Bracket. Attach the assembled Bull Bar to the Brackets with (4) 10mm x 25mm Hex Bolts, (4) 10mm Lock Washers and (4) 10mm x 30mm Flat Washers, **(Figure 15 & 16)**. Do not tighten hardware at this time.
  12. Level and adjust the Bull Bar properly and tighten all hardware.
  13. Do periodic inspections to the installation to make sure that all hardware is secure and tight.

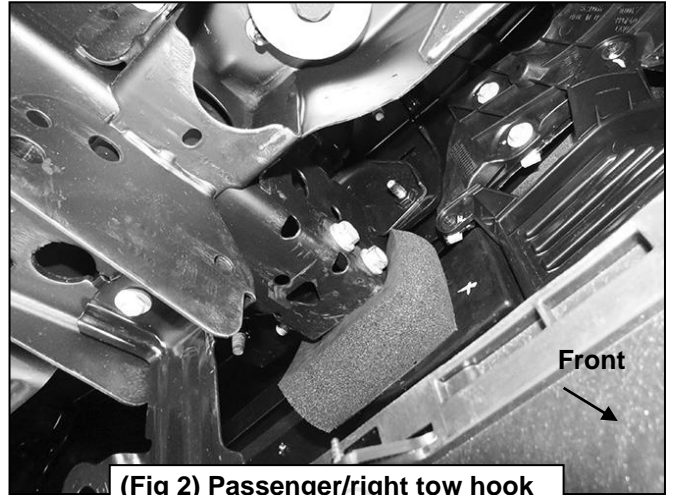
**To protect your investment**, wax this product after installing. Regular waxing is recommended to add a protective layer over the finish. Do not use any type of polish or wax that may contain abrasives that could damage the finish. Mild soap may be used also to clean the Bull Bar.



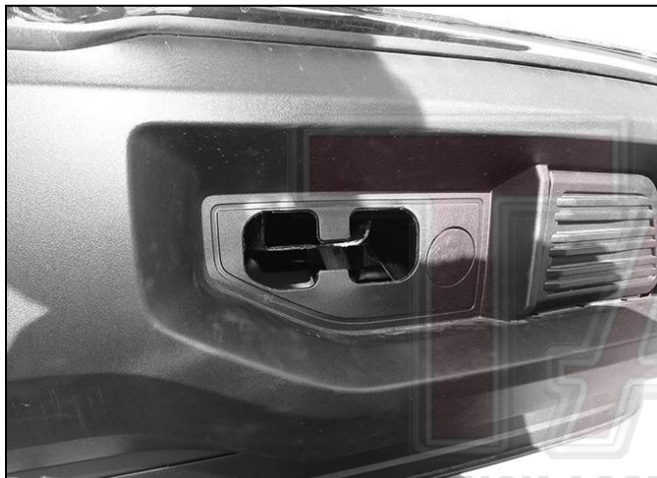
### Driver Side Mounting Bracket Installation Pictured



(Fig 1) Driver/left tow hook pictured

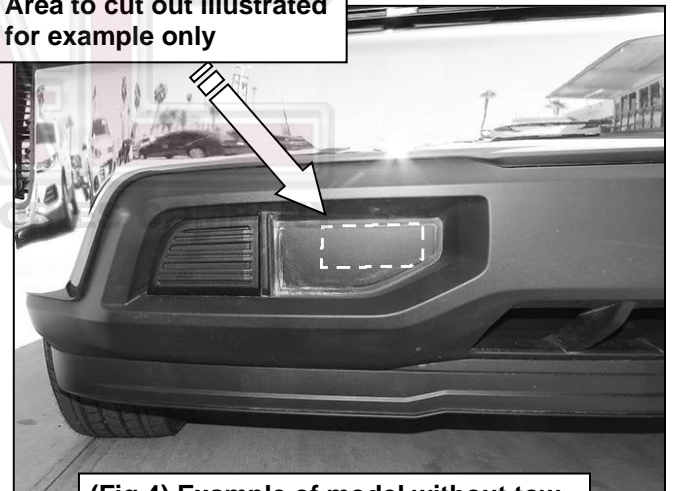


(Fig 2) Passenger/right tow hook pictured from behind bumper

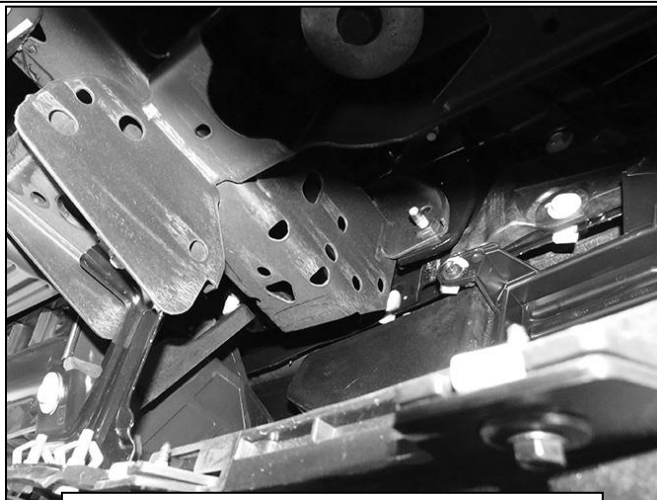


(Fig 3) Tow hook removed. Opening may need to be trimmed to clear the Mounting Bracket assembly

Area to cut out illustrated for example only

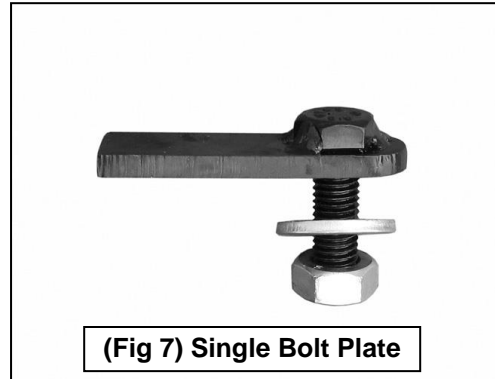
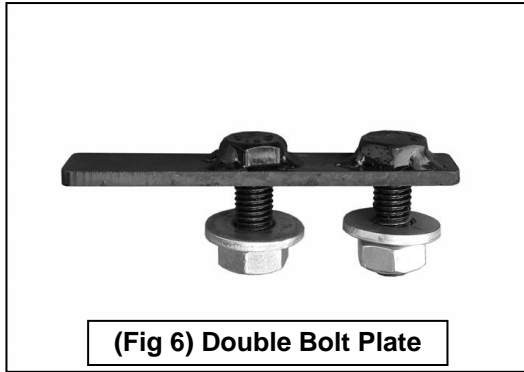


(Fig 4) Example of model without tow hooks, passenger/right side pictured



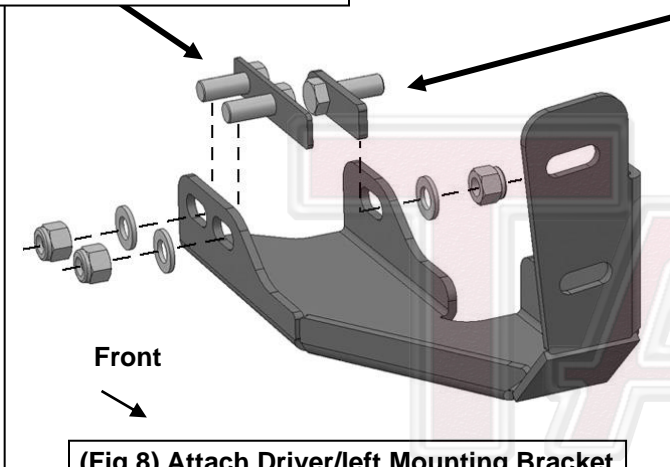
(Fig 5) Passenger/right side of frame and bumper pictured from behind bumper

### Driver Side Mounting Bracket Installation Pictured

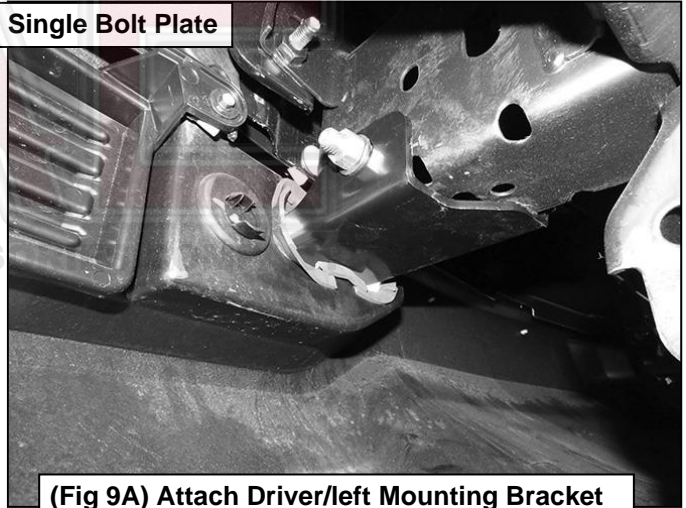


12mm Double Bolt Plate  
(2) 12mm Flat Washers  
(2) 12mm Nylon Lock Nuts

12mm Bolt Plate  
12mm Flat Washer  
12mm Nylon Lock Nut



(Fig 8) Attach Driver/left Mounting Bracket assembly to end of frame with Bolt Plates

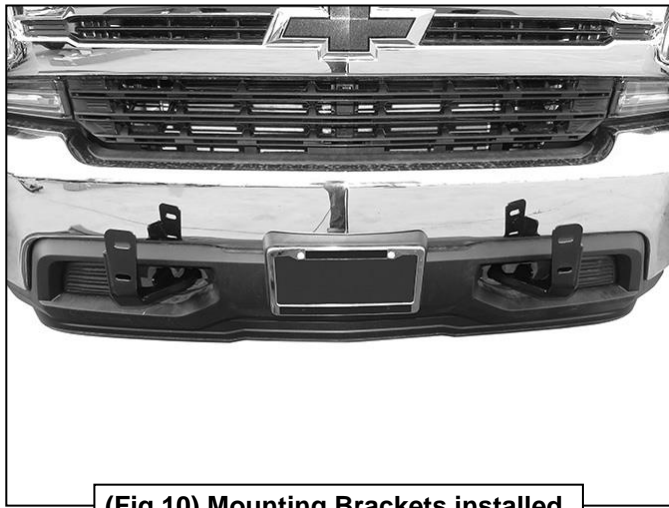


(Fig 9A) Attach Driver/left Mounting Bracket assembly to end of frame with Bolt Plates



(Fig 9B) Attach Driver/left Mounting Bracket assembly to end of frame with Bolt Plates

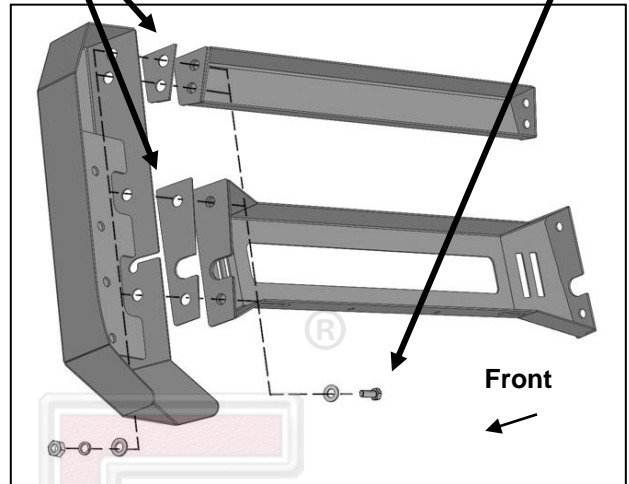
### Driver Side Mounting Bracket Installation Pictured



(Fig 10) Mounting Brackets installed

Insert Adhesive Backed Rubber Seals between Uprights and Top and Center Cross Bars

- (4) 10mm x 25mm Hex Bolts
- (8) 10mm x 20mm Small Flat Washers
- (4) 10mm Lock Washers
- (4) 10mm Hex Nuts



(Fig 11) Driver/Left Side Bull Bar Upright attached to Top and Center Cross Bars

- (2) 6mm Button Head Bolts
- (4) 6mm Flat Washers
- (2) 6mm Lock Washers
- (2) 6mm Hex Nuts

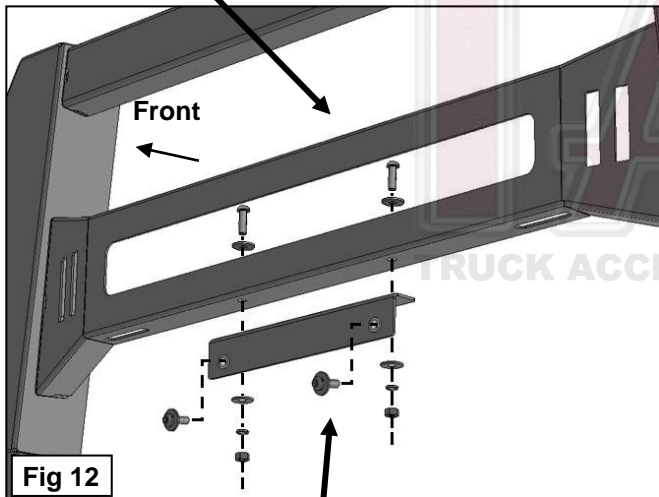
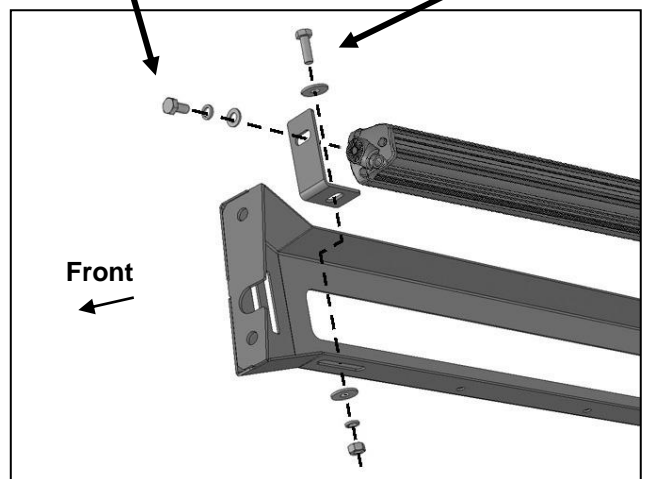


Fig 12

- (2) 6mm Button Head Combo Bolts

- 8mm x 16mm Hex Bolt
- 8mm Lock Washer
- 8mm Flat Washer

- 8mm x 25mm Hex Bolt
- (2) 8mm Flat Washers
- 8mm Lock Washer
- 8mm Hex Nuts

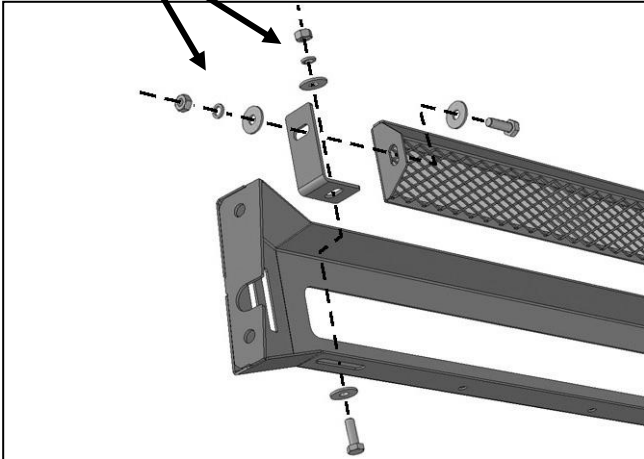


(Fig 13) Attach "L" Light Brackets to slots in bottom of Center Cross Bar. Attach LED Bar light to Brackets



### Driver Side Mounting Bracket Installation Pictured

- 8mm x 25mm Hex Bolt
- (2) 8mm Flat Washers
- 8mm Lock Washer
- 8mm Hex Nut



(Fig 14) Attach Center Fill Panel to "L" Brackets

- (2) 10mm Hex Bolts
- (2) 10mm Lock Washers
- (2) 10mm x 30mm Large Flat Washers

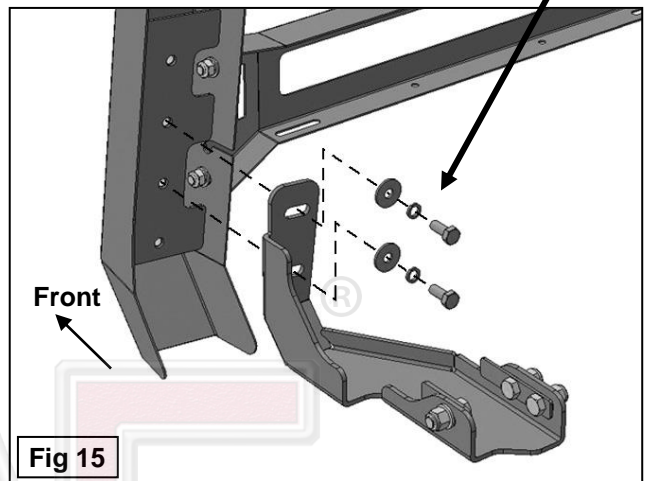
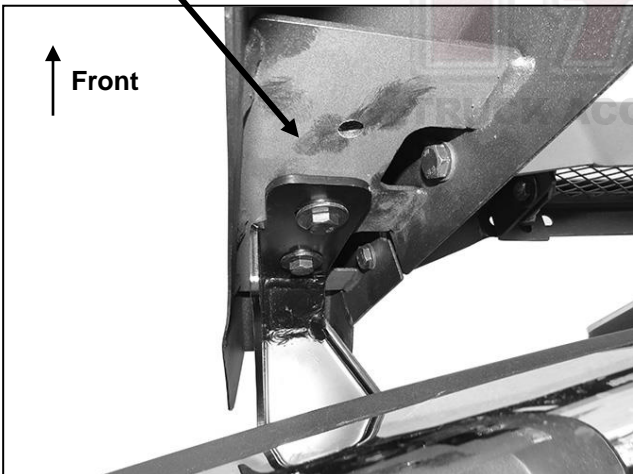
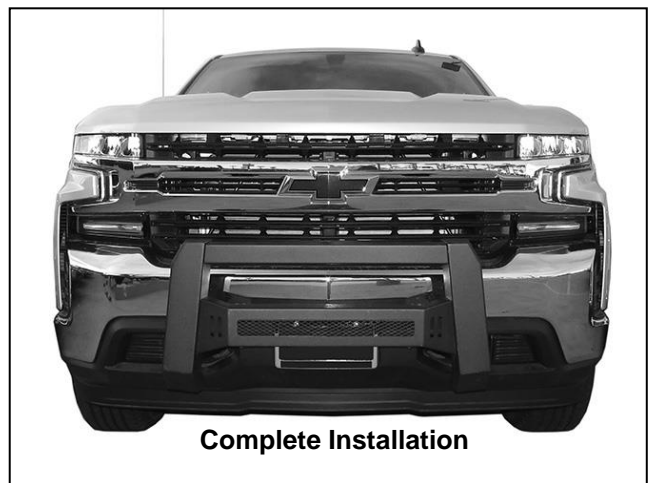


Fig 15

- (2) 10mm Hex Bolts
- (2) 10mm Lock Washers
- (2) 10mm x 30mm Large Flat Washers



(Fig 16) Driver/left side of Bull Bar attached to Bracket



Complete Installation