



INSTALLATION INSTRUCTIONS

REAR BUMPER WITH TIRE CARRIER FOR
07-18 JEEP WRANGLER JK
PART#92450R / 92450T

TRUCK ACCESSORIES COMPANY

HARDWARE LIST:

Qty	Description	Qty	Description
16	1/2" Large Washer	4	M12_120 Hex Bolt
10	12mm Lock Washer	4	M12 Nylon Lock Nut
6	M12 Hex Nut	4	M12_80 Hex Bolt
8	12mm Flat Washer	3	M10_40 Hex Bolt
6	M12_35 Hex Bolt	1	M24 Hex Nut
6	10mm Flat Washer	1	M4_8 Cross Head Screw
3	M10 Nylon Lock Nut	1	M8_8 Hex screw
3	Nut 1/2"-20	1	D4_36 Pin
1	M12_30 Hex bolt		

INSTALLATION PROCEDURE:

- 1- Begin by removing the spare tire.
- 2- Open the tailgate to access the 3rd brake light connector. Remove the vent cover with a panel removal tool. Unclip the brake light wiring harness. Reinstall the vent cover. Close the tailgate.
- 3- Remove the (8) 13mm bolts holding the factory tire carrier in place. Remove the 3rd brake light wiring grommet and remove the harness and plug from the vehicle.
- 4- Remove the (4) 15mm bolts on the outside of each frame rail. Then remove the (4) 15mm bolts securing the plastic bumper to the frame.
- 5- Remove the (3) bolts securing the tow hook to the driver side frame rail.
- 6- Slide the supplied bumper mount bracket into the frame rail so that the threads are visible through the (2) holes circled above.
- 7- Loosely install the bumper to the frame rails using (2) M12x1.75mm bolts, locking washers, and large flat washers.
- 8- Secure the center of the bumper with the (4) M12x1.75 110mm bolts, lock washers and larger washers. Tighten all remaining bumper bolts.
- 9- Begin the tire carrier installation by test fitting the bearings onto the tire carrier mount. The larger bearing is the bottom bearing. The bearings should slide onto the carrier mount with ease. If it does not, do not force it, follow the steps in 11a. **Note: there is no grease on the bearing in the picture. The bearing will come with grease applied.
- 10- If the bearings do not slide onto the carrier mount you will need to use a red scuff pad to remove the excess coating. Only remove the coating from where the bearings will ride. Test fit the bearing frequently. The bearing should not require any force to install.
- 11- Next, assemble the lower portion of the tire carrier arm by installing the bearing race, bearing, large washer and then the grease seal.
- 12- Carefully install the tire carrier arm onto the carrier mount. Now install the upper (smaller) bearing race, bearing, small washer, and castle nut. Tighten the castle nut and then back it off a 1/4 turn. Install the cap and set screw. **Note: Apply a small amount of silicone RTV around the cap to seal the assembly.
- 13- With the carrier arm mounted, align the hinge. There are several different shims, align the hinge height so

that the carrier arm is level with the hinge.

- 14- Use the M10x1.5 bolts with washers and lock nuts to secure the hinge to the bumper. ****Note:** Take time to align this hinge to the carrier arm for a smooth engagement.
- 15- Install the tire carrier hub mount to the tire carrier using the M12x1.75 bolts, washers, and lock nuts.
- 16- Measure the spare tire to set the hub mount spacing on the tire carrier. Place a straight edge across the tire and measure from the hub of the wheel to the straight edge, then subtract .25".
- 17- Install the spare tire using the supplied lug nuts. Torque to factory spec (40-80ftlbs).



DIAGRAM:

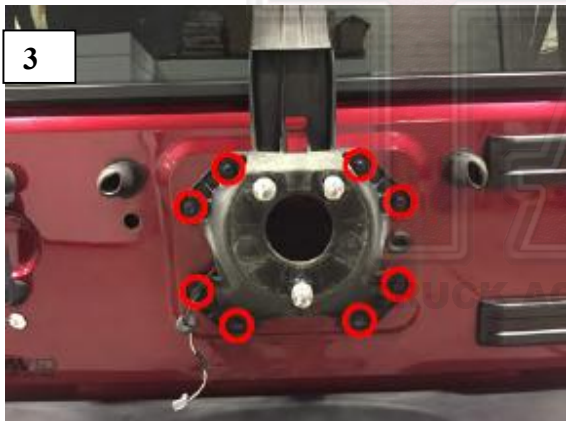
STEP 1



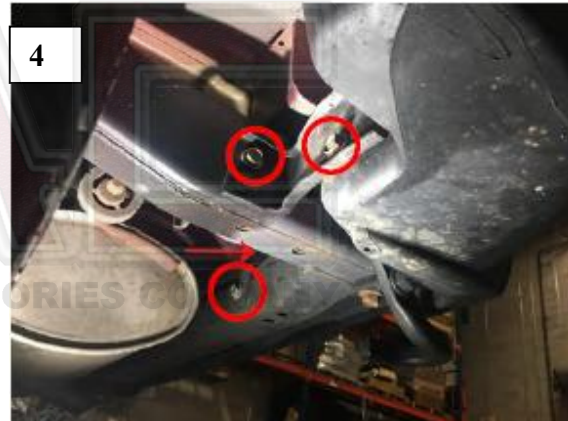
STEP 2



STEP 3



STEP 4



STEP 5



STEP 6



STEP 7



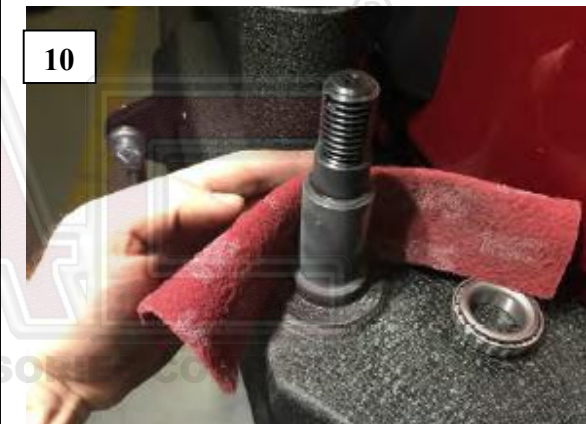
STEP 8



STEP 9



STEP 10



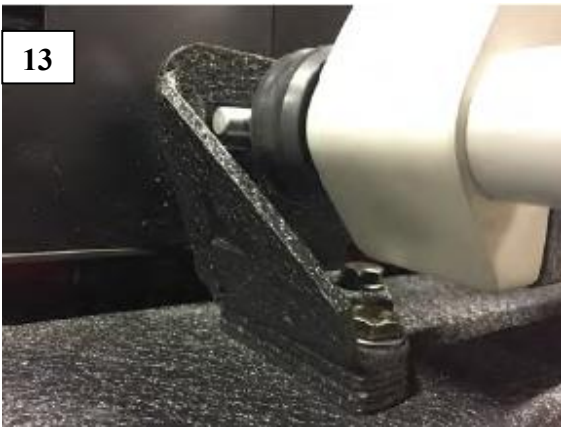
STEP 11



STEP 12



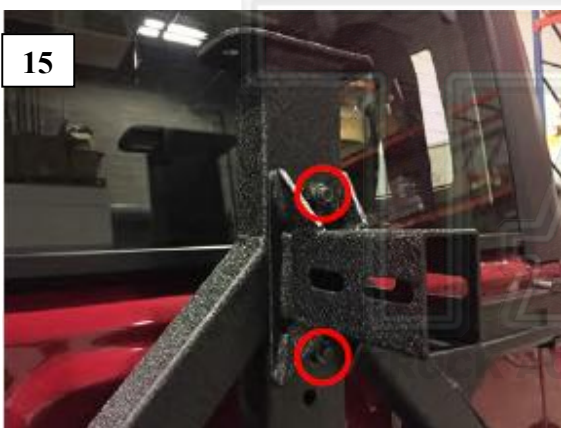
STEP 13



STEP 14



STEP 15



STEP 16



STEP 17

