



INSTALLATION INSTRUCTIONS

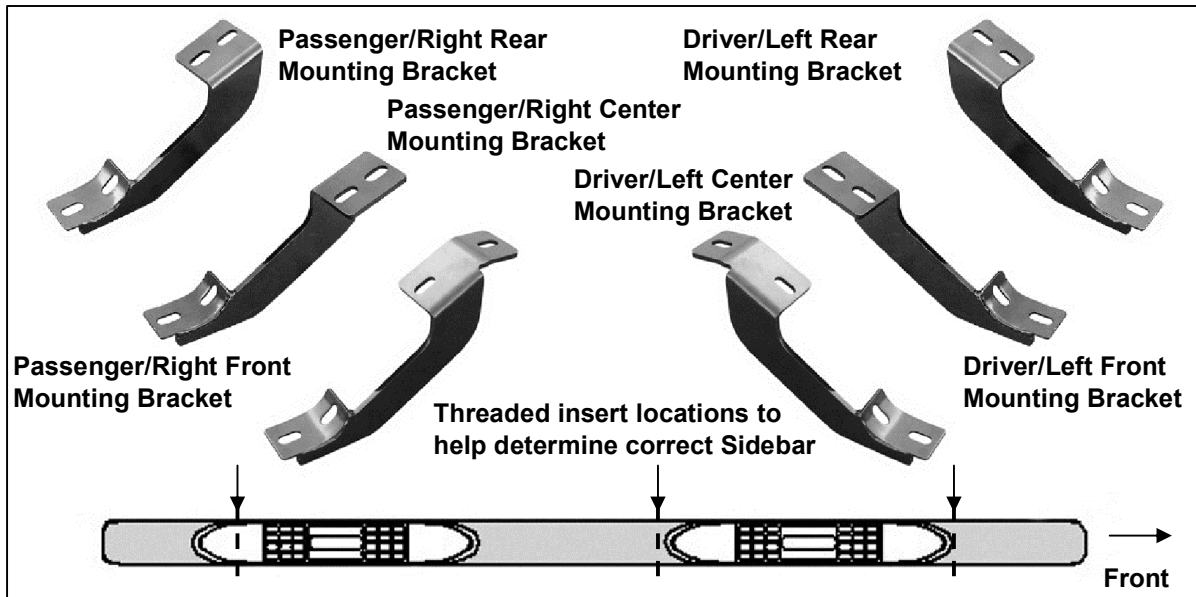
5IN STRAIGHT SIDEBAR

2007-2021 TOYOTA TUNDRA DOUBLE CAB

PART# 5S-T1092

PARTS LIST:

1	Driver Sidebar	1	Driver/Left Rear Mounting Bracket
1	Passenger Sidebar	1	Passenger/Right Rear Mounting Bracket
1	Driver/Left Front Mounting Bracket	24	8-1.25mm x 30mm Hex Bolts
1	Passenger/Right Front Mounting Bracket	24	8mm Lock Washers
1	Driver/Left Middle Mounting Bracket	24	8mm ID x 24mm OD x 2mm Flat Washers
1	Passenger/Right Middle Mounting Bracket		



PROCEDURE:

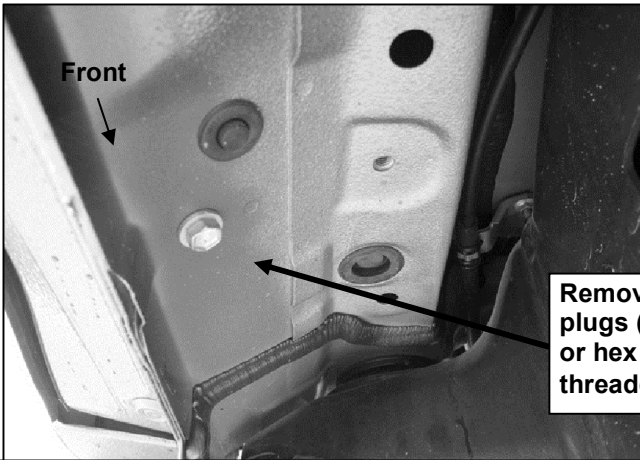
- 1. REMOVE CONTENTS FROM BOX. VERIFY ALL PARTS ARE PRESENT. READ INSTRUCTIONS CAREFULLY.**
- Starting on the driver side front of the vehicle, remove the existing (2) factory bolts, (or plastic plugs), on the side panel located by the front tire opening, (**Figure 1**). This will be the mounting location for the driver side front Mounting Bracket. Partially attach the front Mounting Bracket to the vehicle using the included (2) 8mm x 30mm Hex Bolts, (2) 8mm Lock Washers and (2) 8mm Flat Washers, (**Figure 2**). Do not tighten hardware at this time.
- Remove the two factory bolts, (or plastic plugs), along the side panel closest to the front Bracket and the very last two factory bolts, (or plastic plugs), along the side panel toward the back of the cab. Select the proper Center and Rear Brackets and bolt them to the body panel as described in Step 2, (**Figures 3 - 5**).
- Carefully place the Driver/Left Sidebar onto the (3) Brackets. Align the threaded holes in the bottom of the Sidebar with the holes on the Mounting Brackets. Attach the Sidebar to the Mounting Brackets with the included (6) 8mm x 30mm Hex Bolts, (6) 8mm Lock Washers and (6) 8mm Flat Washers, (**Figures 3 - 5**). Do not tighten at this time.
- Level and adjust the Sidebar properly and tighten all hardware.
- Repeat Steps 2-5 for passenger Sidebar installation.
- Do periodic inspections to the installation to make sure that all hardware is secure and tight.

To protect your investment, wax this product after installing. Regular waxing is recommended to add a protective layer over the finish. Do not use any type of polish or wax that may contain abrasives that could damage the finish.

For stainless steel: Aluminum polish may be used to polish small scratches and scuffs on the finish. Mild soap may be used also to clean the Sidebar.

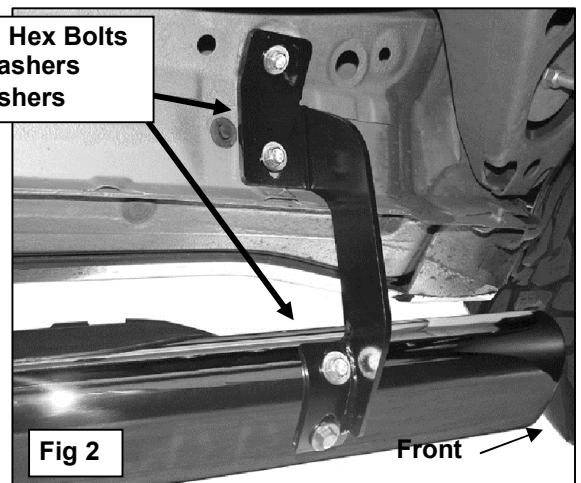
For gloss black finishes: Mild soap may be used to clean the Sidebar.

Driver Side Installation Pictured

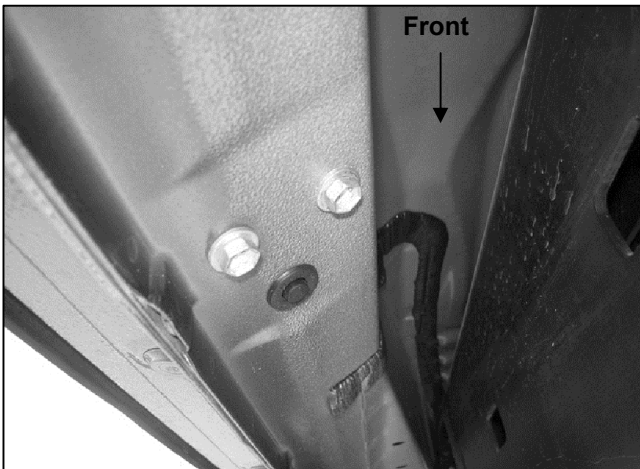


(Fig 1) Driver/Left Front Mounting Location Pictured

8mm x 30mm Hex Bolts
8mm Lock Washers
8mm Flat Washers

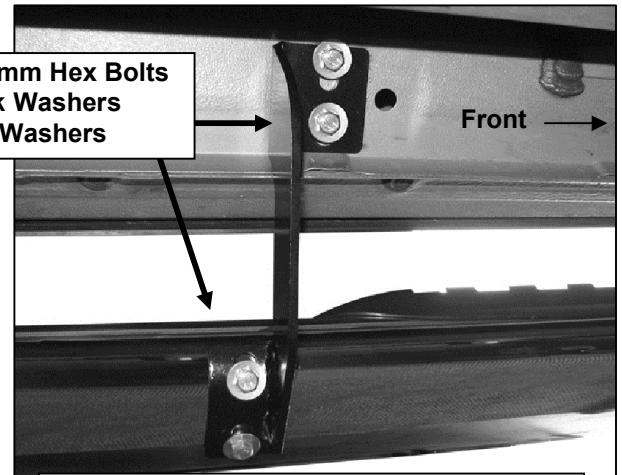


There are four sets of threaded holes in the side panel. Starting from the front of the vehicle, use the first, second, and fourth set of holes.

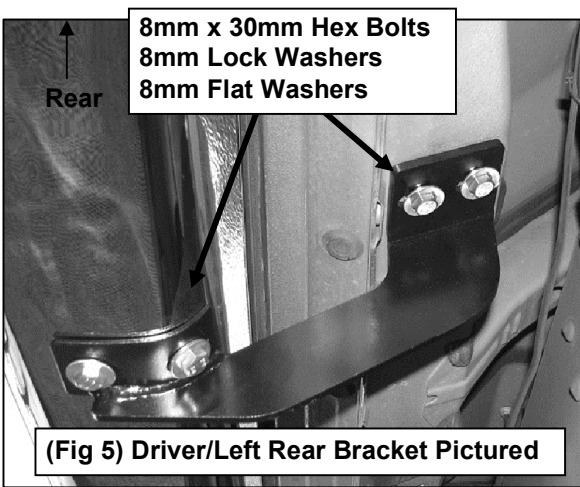


(Fig 3) Driver/Left Center Mounting Location Pictured

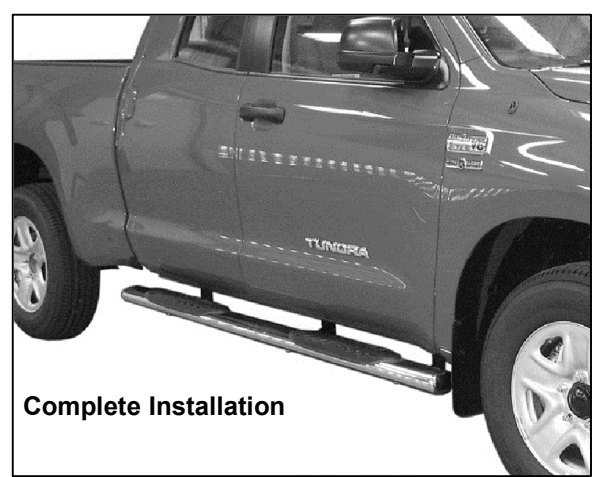
8mm x 30mm Hex Bolts
8mm Lock Washers
8mm Flat Washers



(Fig 4) Driver/Left Center Bracket Pictured



(Fig 5) Driver/Left Rear Bracket Pictured



Complete Installation