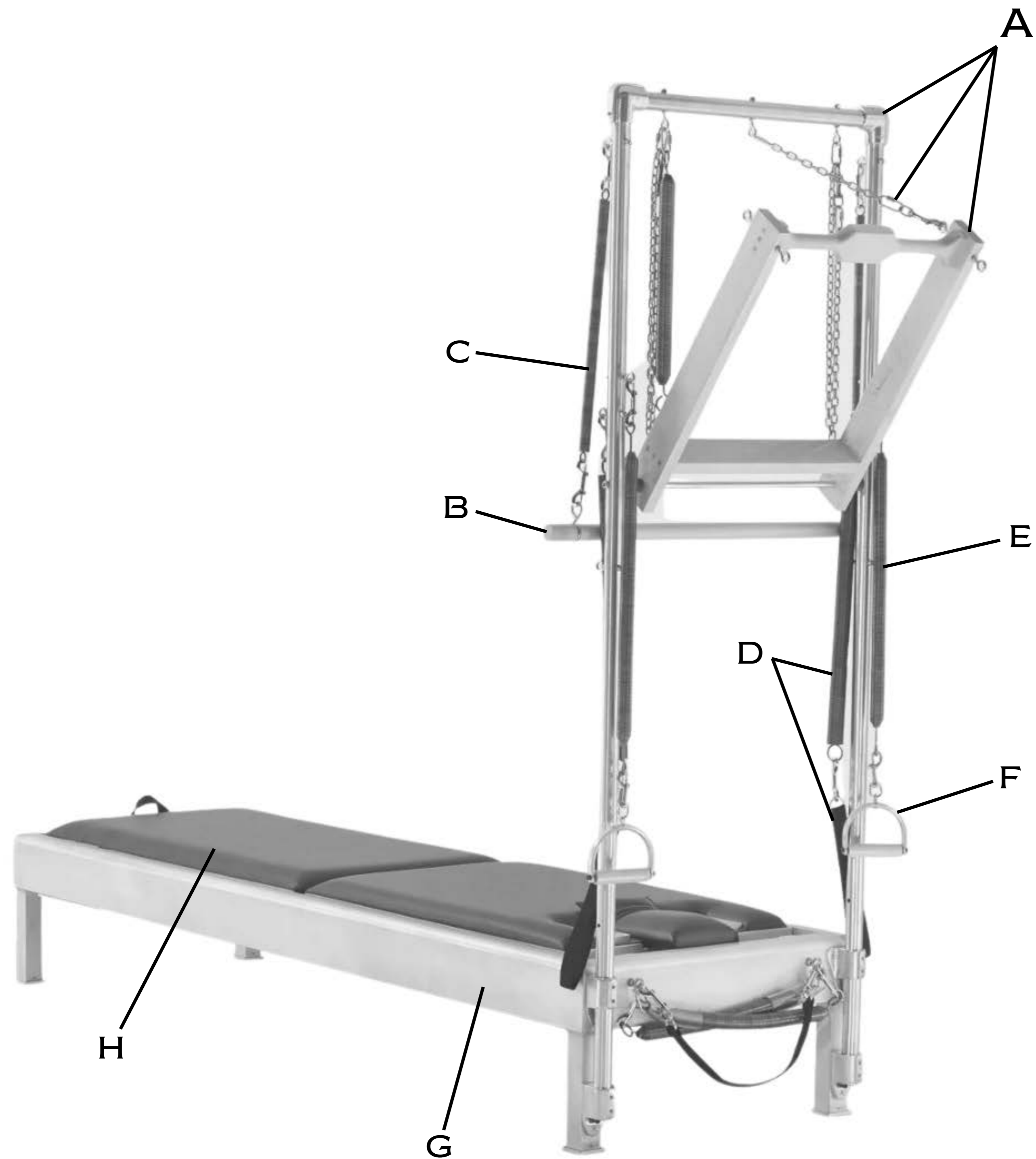


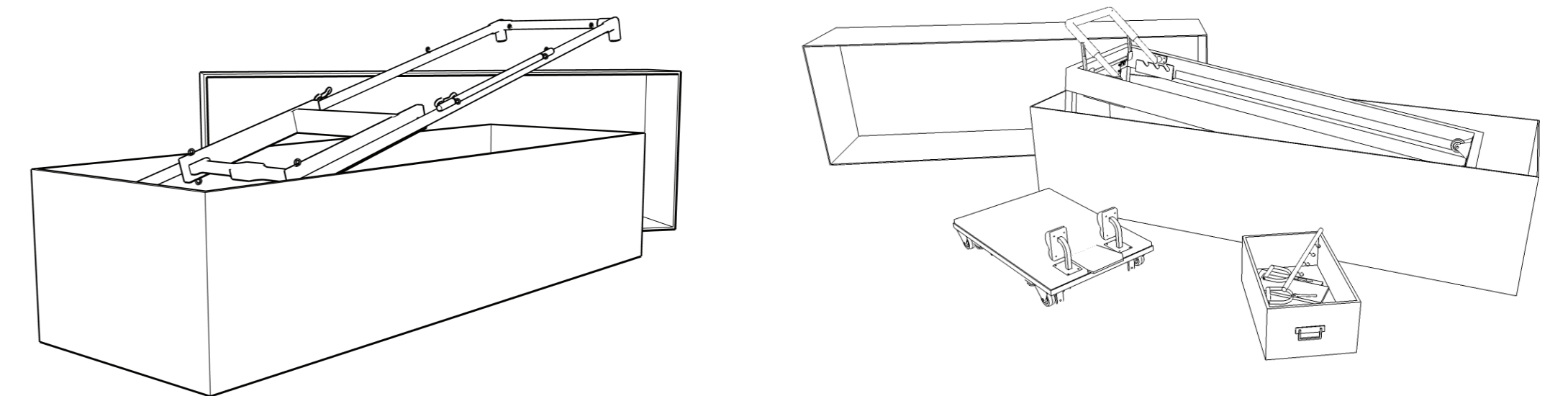
**REFORMER TOWER COMBINATION**  
ASSEMBLY INSTRUCTIONS





**WHAT COMES IN THE BOX**

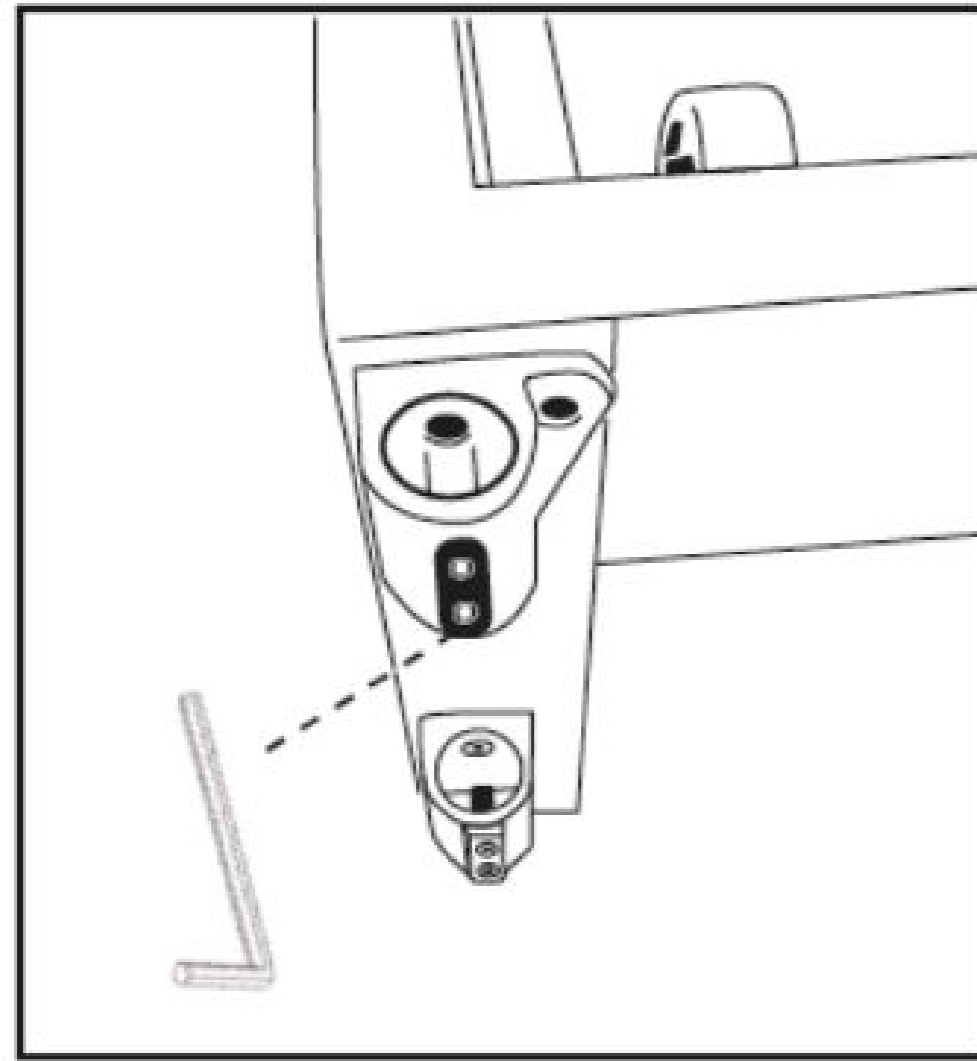
- A- MAIN VERTICAL ASSEMBLY
  - PUSH THROUGH BAR
  - PUSH THROUGH SPRINGS
  - SAFETY CHAINS
- B- ROLL BACK BAR
- C- ROLL BACK BAR SPRINGS
- D- LEG SPRINGS WITH LOOPS
- E- ARM SPRINGS
- F- ALUMINIUM WOODEN HANDLES
- G- REFORMER FOR COMBO SET
- H- INSERT BED



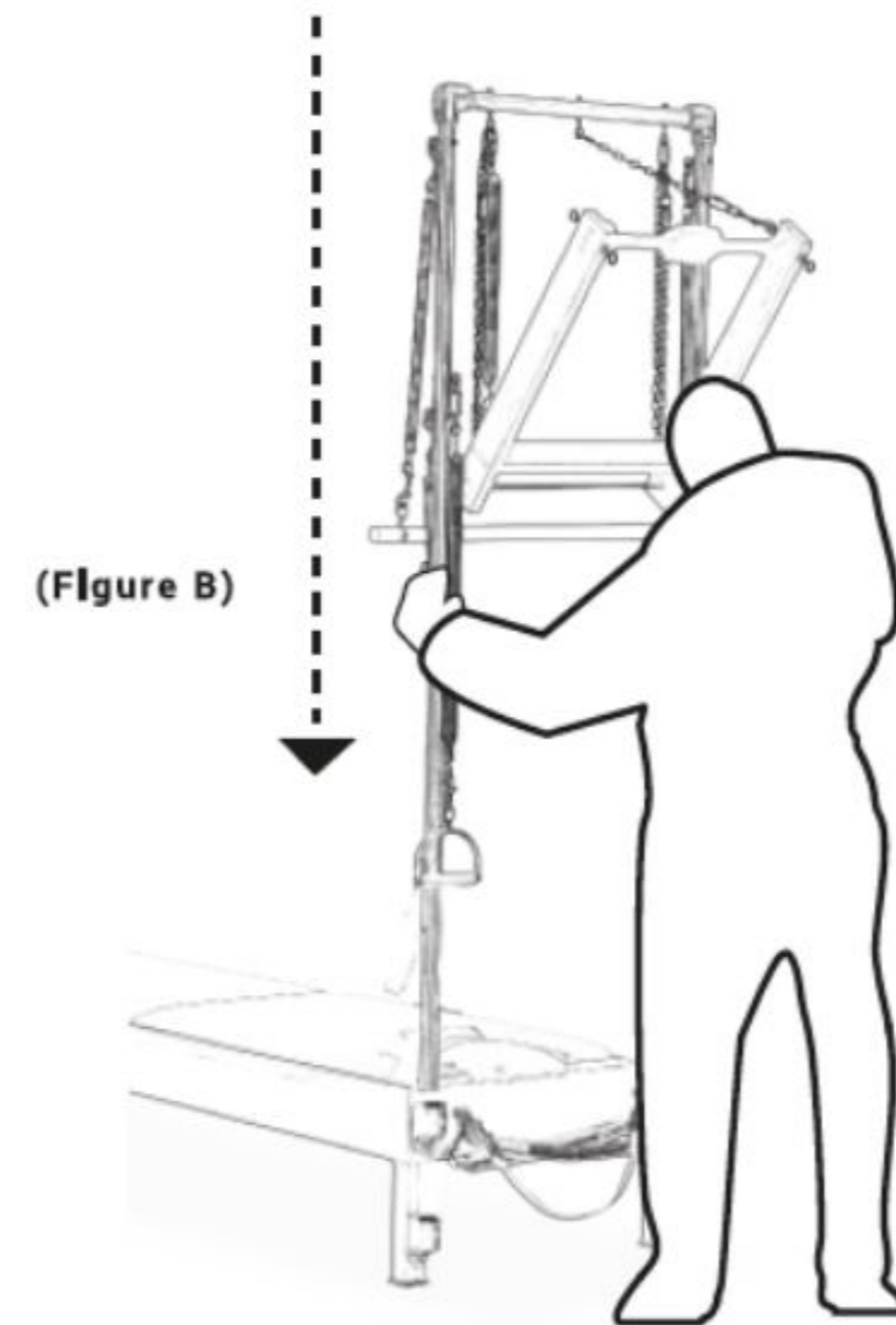
**STEP 1 - REMOVE CONTENTS FROM THE BOX**  
 PLACE THE BOX LONG SIDE DOWN. USE THE  
 BOX CUTTER TO CAREFULLY CUT THE TIES.

## STEP 2 - INSTALLING TOWER

BE SURE TO LOOSEN ALL TWO SET SCREWS (8 ALTOGETHER), SO THAT THERE IS NO OBSTRUCTION WHEN INSERTING POLES (FIGURE A). MOVE THE POLES UPRIGHT NEXT TO REFORMER FRAME END (REAR). CAREFULLY LIFT THE CONVERSION UNIT AND PLACE INTO FLANGE OPENINGS. SLOWLY WALK THE UNIT DOWNWARD (DON'T TORQUE THE POLES) UNTIL THE POLES ENTER THE SECOND FLANGES (FIGURE B).



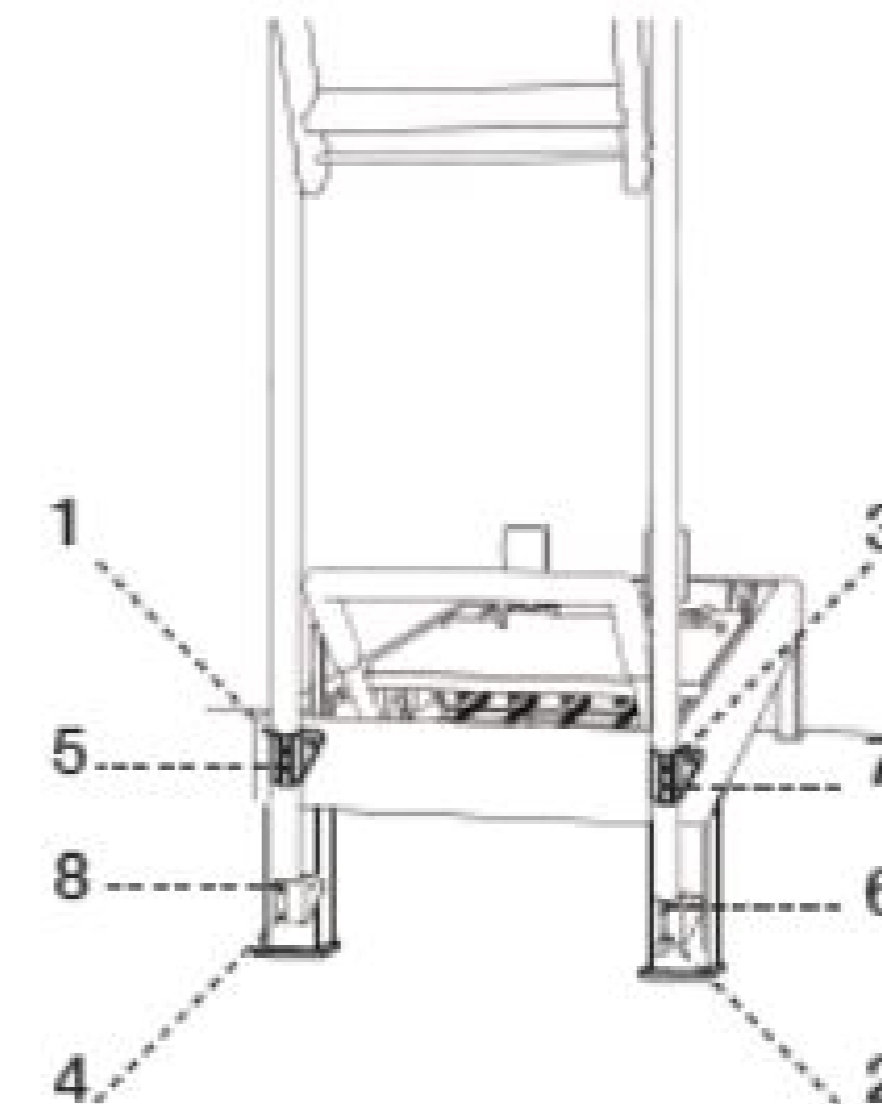
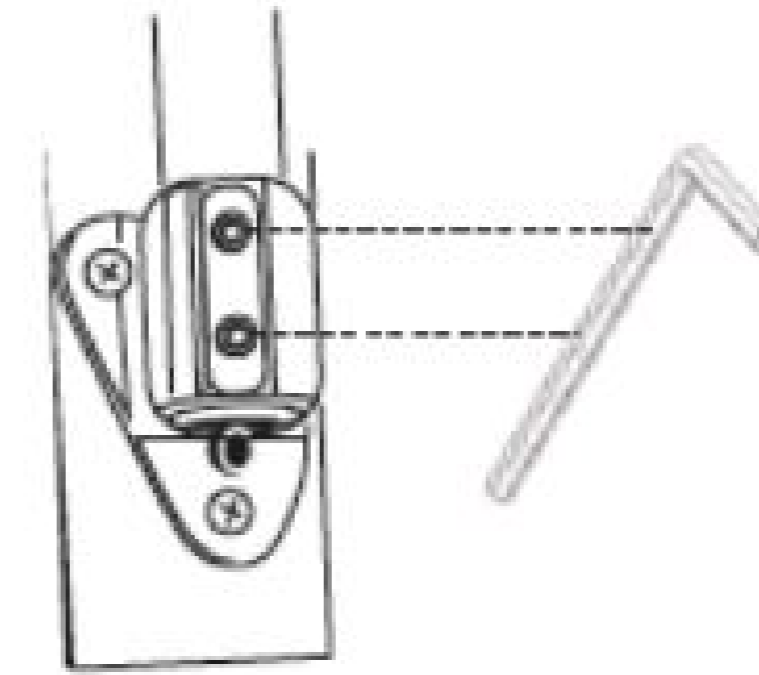
(Figure A)



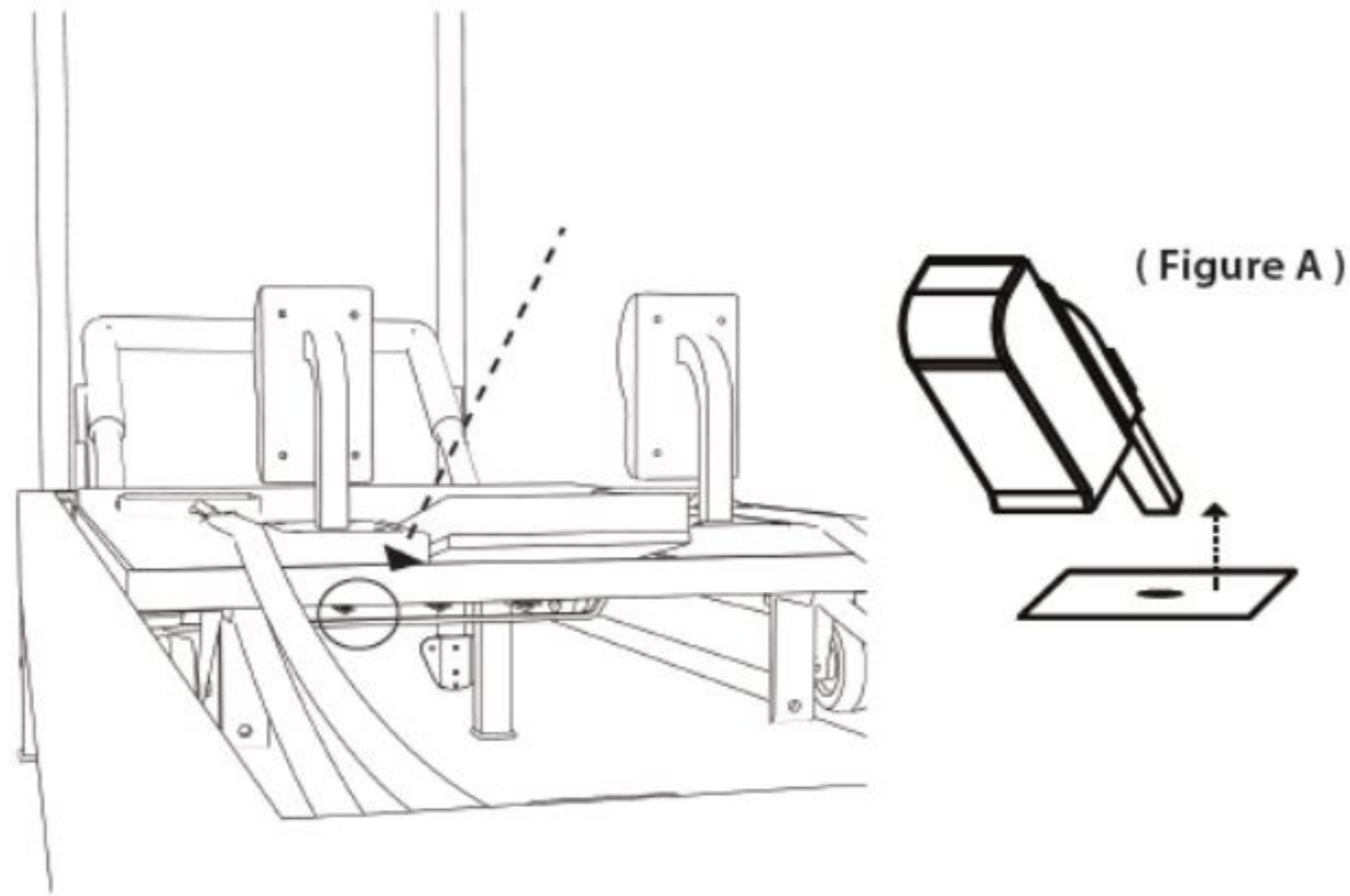
(Figure B)

## STEP 3 - PLACE SPRING BAR ON FRAME

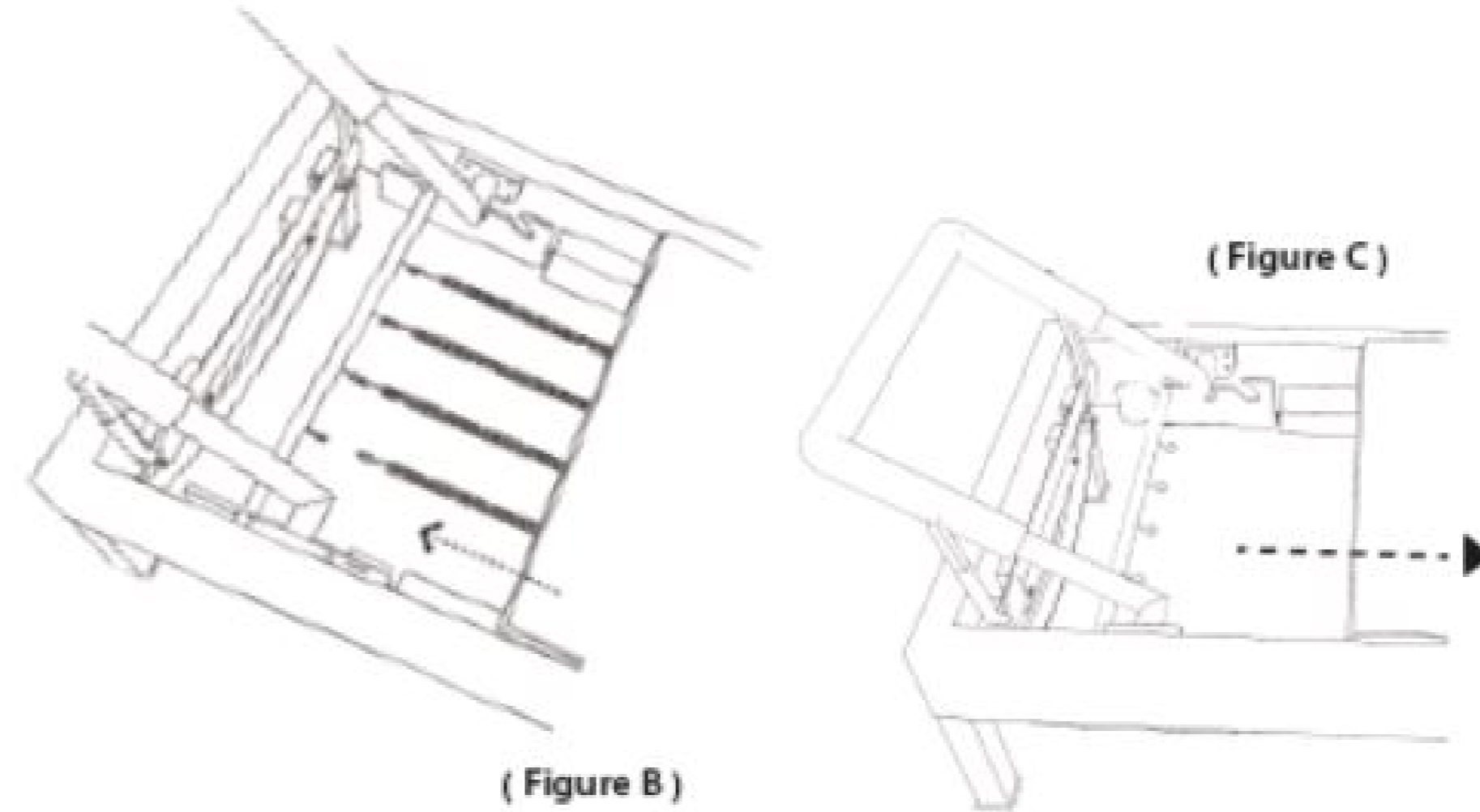
BE SURE THAT BOTH POLES ARE SITTING FLUSH ON THE STOP BOLT. TIGHTEN ALL EIGHT SET SCREWS IN THE PATTERN BELOW:



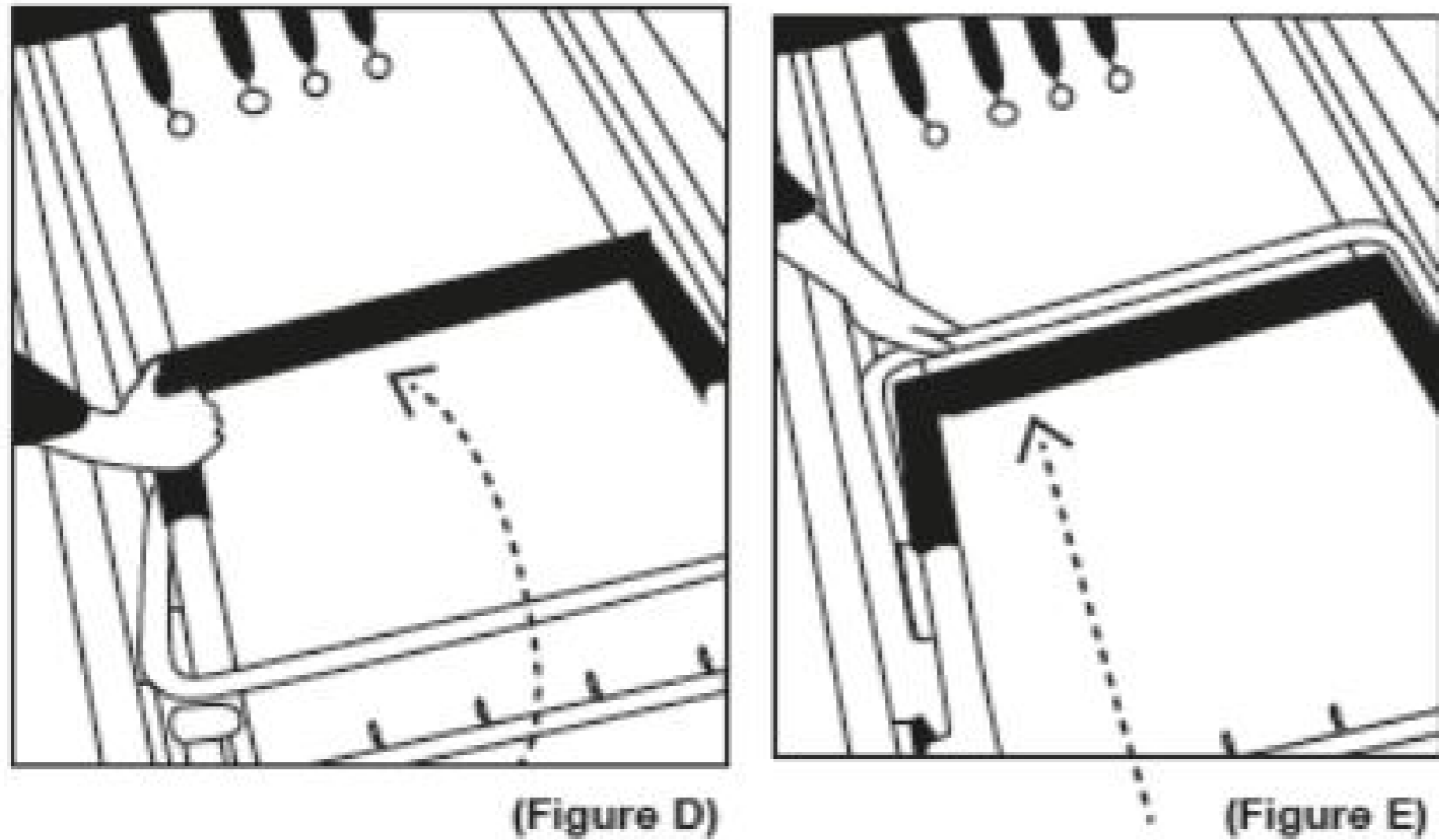
**STEP 4 - REMOVE SHOULDER BLOCKS**  
LOCATE AND REMOVE THE HITCH PINS UNDER THE CARRIAGE. THEN REMOVE SHOULDER BLOCKS (FIGURE A).



**STEP 5 - ADJUSTING COMPONENTS**  
DISENGAGE SPRINGS (FIGURE B) AND SLIDE THE CARRIAGE ALL THE WAY TO THE BACK OF THE REAR FRAME (FIGURE C).



**STEP 6 - ADJUSTING COMPONENTS**  
LOWER FOOT BAR DOWN ONTO THE TRACKS (FIGURE D). ADJUST FOOT BAR SUPPORT TOWARD THE REAR OF THE REFORMER (FIGURE E).



**STEP 7 - COMPLETING SETUP**

\*NOTE: (IF THIS STEP IS NOT EXECUTED CAREFULLY, THE CORNERS OF YOUR UPHOLSTERY MAY GET DAMAGED). PLACE THE SIDE THAT IS AGAINST THE OTHER UPHOLSTERY FIRST AND THEN HOLD THE STRAP TO GENTLE INSERT THE OTHER SIDE INTO PLACE. (FIGURE F).

