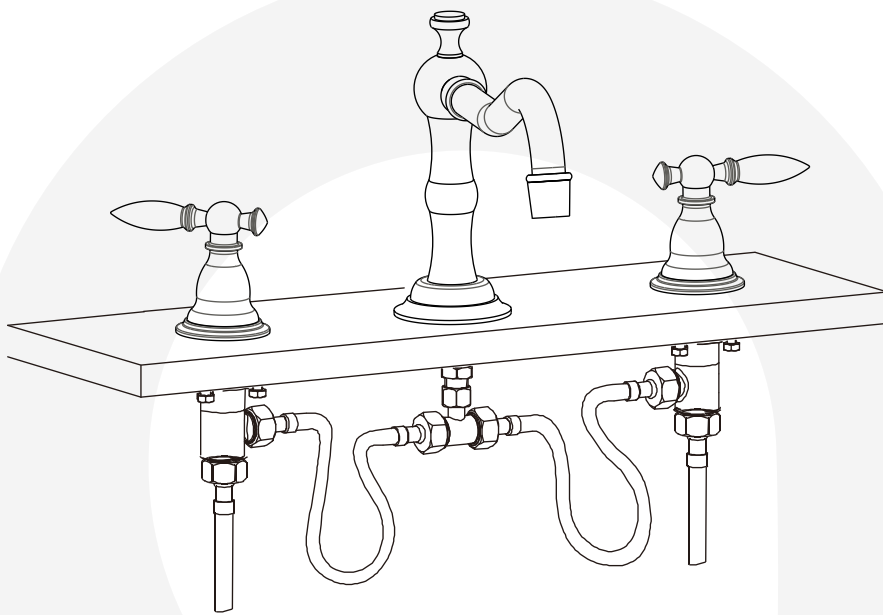


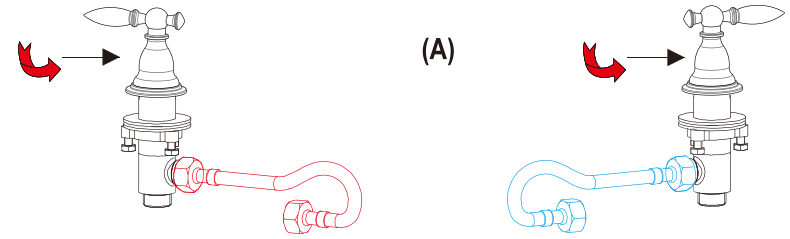
Widespread Fauscet

Installation Instructions

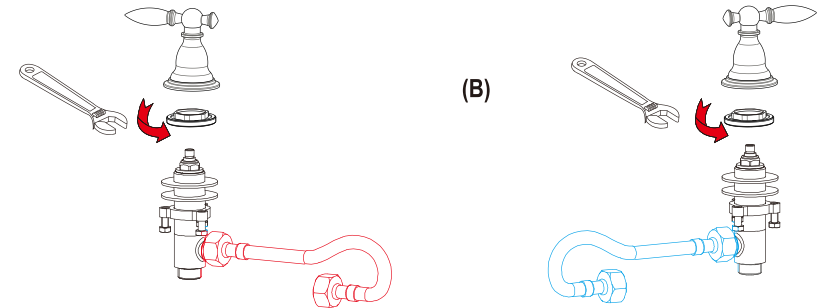


In case of a doubt or query, please don't hesitate to contact our customer care team through **740-697-5223**
info@buildmyplace.com

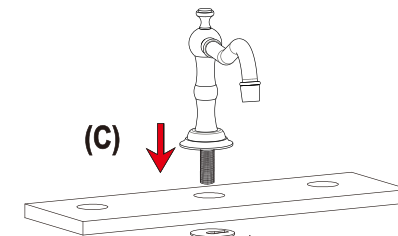
TYPE ONE: The handle without set screw



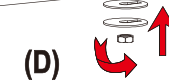
(A) Screw the handle body to the right until the handle off.



(B) screw the screw cover to the right until it off.



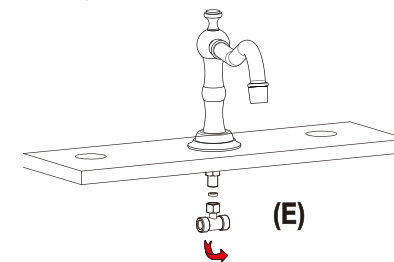
(C)



(D)

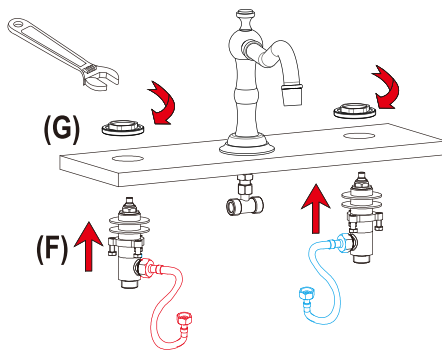
(C) Insert shank through center hole in sink.

(D) Thread rubber washer, metal washer, and nut onto shank from below countertop. Tighten nut.



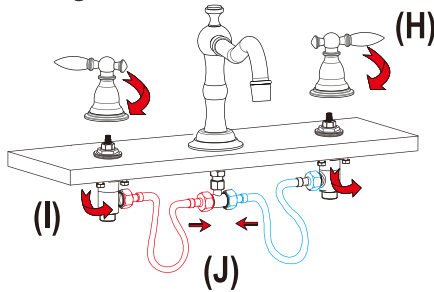
(E)

(E) Connect and tighten the T-Joint to the shank.



(F) Insert handle valve body into outer hole of sink.

(G) From above, tighten screw cover onto valve body.

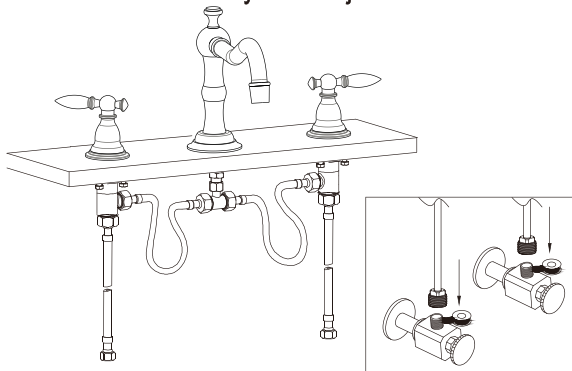


(H) Place handle onto cartridge in desired position and tighten the handle body .

*Note: To decrease or increase gap between handle and spacer simply tighten or loosen spacer.

(I) From below the sink, tighten nut on shank until firmly in place against sink.
Tighten all nuts and screws.

(J) Connect hoses from valve body to the T-joint.



Connect to Water Supply

NOTE: WATER SUPPLY HOOK-UPS NOT PROVIDED.