



Programming Parameter Guide

For Elite Plus and Pro Plus Models

Some features are only applicable to firmware version 4.x

How to install Programmer:

Runs On PC or Mac running Windows 7/10

NOTE: Requires **USB 2** Port. **The programmer will not work with USB 3 - if your PC only has USB3 ports suggest you attach X10DR device via a usb patch block most are USB 2.)**

Included with the Programmer download file application are instructions on how to set-up the programmer on your Windows 7/10 PC. Please follow those instructions to install the programmer correctly onto your computer.



USER PROGRAMMER INSTALLATION GUIDE

The X10DR User Programmer requires two separate programs to be installed.

- Step 1** – Drivers : Install BlueSuite found on the USB Flash-Drive (BlueSuite…EXE).
When given the choice of components to install please select the options shown below.
(Do not install Core, BlueTest3 or DFU tools).

How to use Programmer:

Runs On PC running Windows 7/10

Requires **USB 2** Port.

To put Handset into programming mode:

Turn off handset, attach programming cable between device Hirose port and PC then press red handset on/off button while holding PTT. The handset's LED will light red.

To put Gateway into programming mode:

Turn off gateway. Then hold gateway ON/OFF button down while attaching the programming cable to device micro-USB port and PC USB port. The Gateway's LED will light red. *Note: The gateway's RJ45 socket should **not** be connected to the host radio.*

Always READ device before proceeding further.

We suggest you **SAVE** the file onto your PC for re-loading if required. A GREYED out feature means your device does support that capability.

Read Device

Press to load current programming parameters from device to screen.

Program Device

Press to load current screen programming parameters to a device.

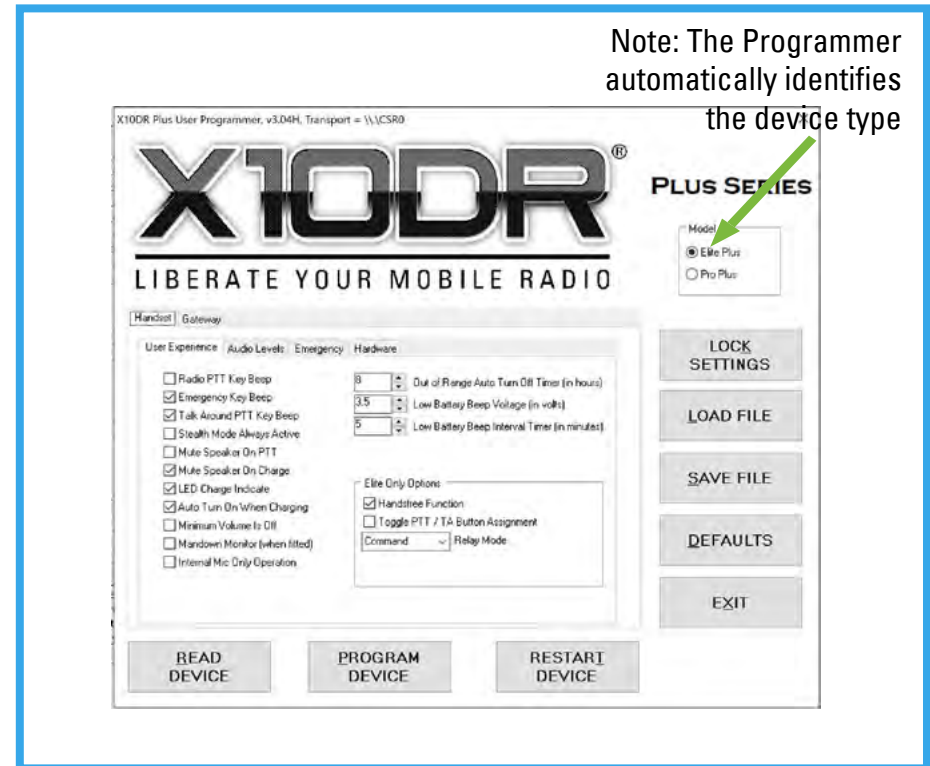
Restart (important)

Press to **restart** programmed device before removing programming cable.

Lock - Unlock File

Press to lock your desired parameter configuration before undertaking batch fleet programming. This will prevent you errantly changing a parameter unknowingly during reprogramming.

Note: The Programmer automatically identifies the device type



Load File

Press to load a previously saved programming parameters to device from its saved PC location.

Save File

Press to save a programming parameters from screen to desired PC location saved location.

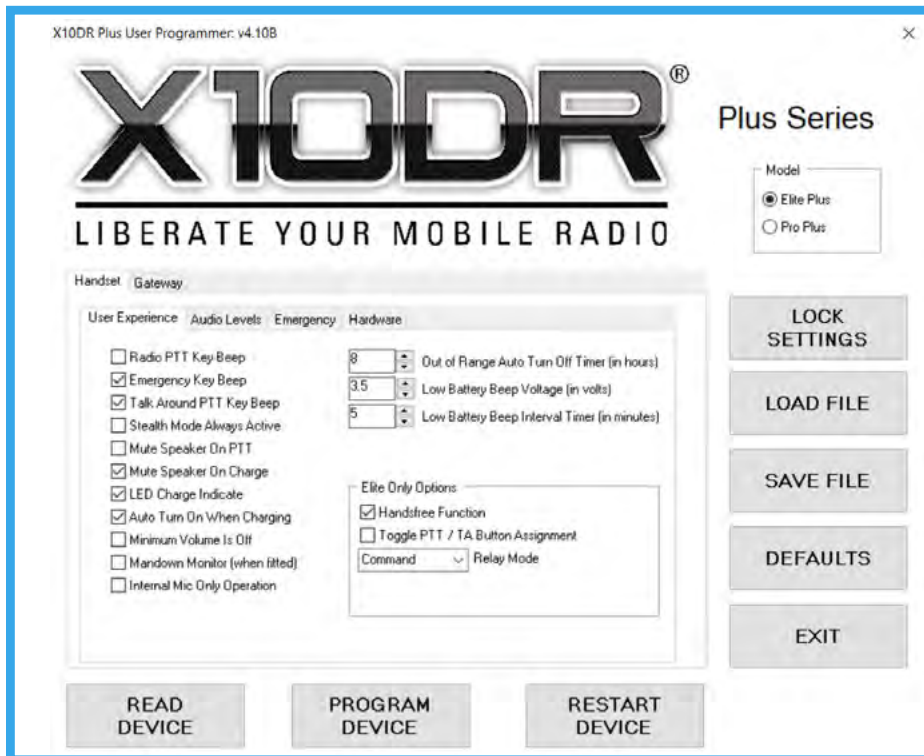
Defaults

Press to reset with default device parameters

Exit

Press to exit program.

Handset Parameters



Radio PTT key beep

Sounds talk permit two tone sequence whenever PTT is pressed and handset is within range of its gateway.

Default - OFF

Emergency key beep

Sounds single tone whenever Emergency button is pressed and handset is within range of its gateway.

Default - ON

Talkaround PTT key beep

Sounds talkaround triple tone sequence whenever Talkaround button is pressed and handset is within range of its gateway.

Default - ON

Stealth mode always active

Disables all alert tones and LED status light. User can manually enable stealth mode if programmed off.

Default - OFF

Mute speaker on PTT

Disables all speaker audio whenever PTT is pressed.

Default - OFF

Mute speaker on charge

Disables speaker when handset is in gateway or a charger.

Default - ON

LED charge indicate

Disables "momentary blink" charge indicate when handset is placed into gateway or a charger and device is charging.

Default - ON

Auto turn on when charging

Causes handset to automatically turn on whenever it is placed in gateway or a charger.

Default - ON

Minimum volume is off

Allows user to turn the speaker audio off instead of level 1.

Default - OFF

Mandown Biometric Monitor (when fitted)

Enables/disables function via programmer for Plus handsets fitted with XMD option.

Default - OFF

Handset Programming: Basic functions

Internal Mic Only Operation

Maintains operation via internal microphone when accessory attached to Hirose port. required for earpiece (WPEH-X10/WPTEP-X10) use via Hirose headset port.

Default - OFF

Out of range turn off time

Sets time in hours that a handset that is not actively connected to a gateway will remain powered on before turning itself off.

Default - 8 hours

Low battery beep voltage

Sets the remaining battery voltage that will cause the low battery alert tones to be generated. (for longer shift life you may set voltage lower but you may get less warning before device automatically shuts off.

Default - 3.5V

Low battery beep interval timer

Sets the interval that the low battery alert tones are sounded in the handset.

Default - 5 minutes

Elite Plus Only Options

Handsfree Function (shows "disabled" if feature not enabled)

Enables user selectable handsfree intercom function in Elite Plus handsets.

Default - ON

Toggle PTT/TA Button Assignment

Configures handset so that pressing the top grey Control button toggles the side PTT button assignment between host radio PTT and Talkaround or 2nd Radio device PTT /PA Mode when used with XSJB or similar.

Default - OFF

Command Relay Mode / Automatic Relay Mode

Selects the Relay Mode type in Elite Plus handsets.

Default - Command Relay (manual - normally OFF)



We recommend you use the **XGALA Gateway Audio Level Adjustment software tool** for setting levels between host radio and X10DR gateway. It can be downloaded at www.x10dr.com for setting audio in and out between the gateway and the host mobile radio.

The following handset adjustments are designed to cater for different audio accessories and/or user applications requiring alternate audio sensitivities to suit different operating conditions.

Internal Mic Gain

Sets the internal microphone's transmit audio level sensitivity.

Default - 3

Internal Mic High Gain Boost

Sets the internal microphone's sensitivity when "Live Mic" is active.

Default - 6

External Mic Gain

Sets the external microphone's transmit audio level sensitivity.

Default - 6

External Mic High Gain Boost

Sets the external microphone's sensitivity when the X10DR's "Live Mic" is active or when user manually selects high gain by powering up microphone with blue volume up button pressed.

Default - 6

Remote PTT Gain Boost

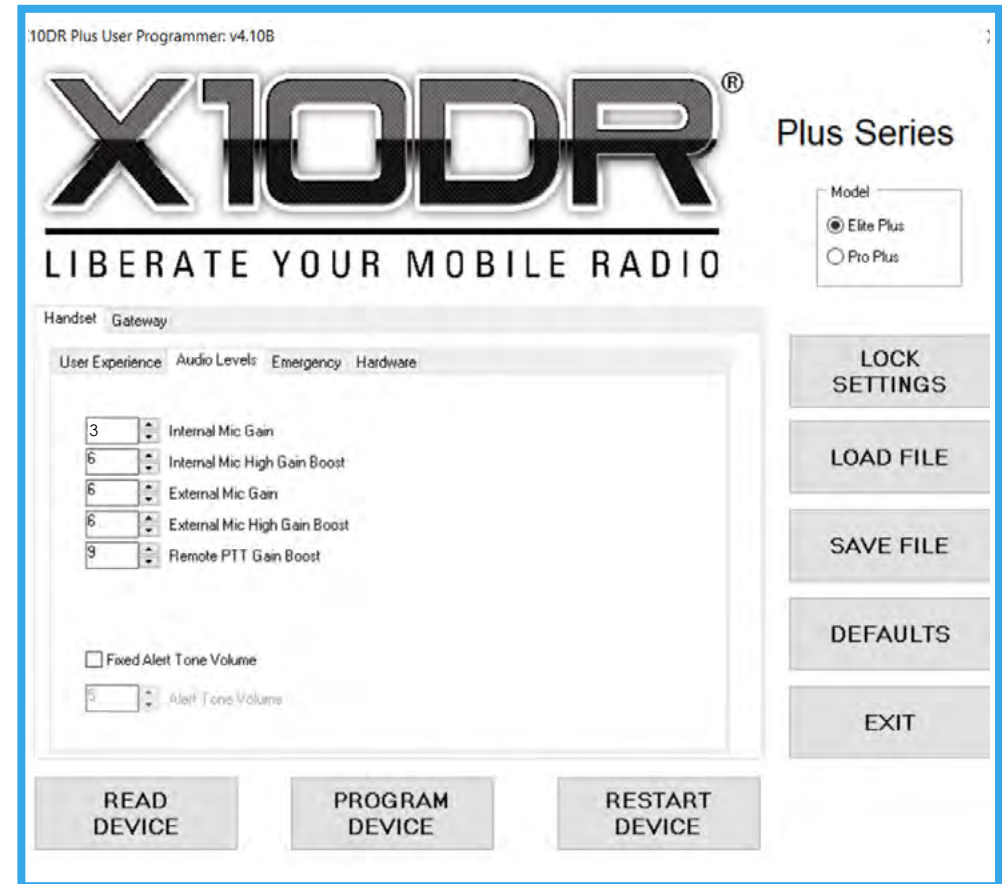
Increases sensitivity of internal microphone when remote/handlebar PTT is pressed.

Default - 9

Fixed Alert Tone Volume

Limits all user monitored alert tones to level set below rather than being controlled by handset volume controls.

Default - OFF



Alert Tone Volume

Sets the value of the "Fixed Alert Tone" when enabled that a user will hear from their handset.

Default - 5

When handset is configured for press & hold emergency

Audio link active time

Sets the duration the transmit audio is active after Emergency button is released. Feature is intended for those mobiles that activate their own internal "Live Mic" function whenever emergency is triggered. This allows the handset's Tx audio to be broadcast over the radio's transmit channel, (assuming mobile sources "Live Mic" from its external mic input). **Default - 0**

When handset is configured for short/long press emergency

Transmit Time

Sets the time duration that X10DR "Live Mic" handset Tx audio is active when Advanced Emergency activated.

Default - 0

Receive Time

Sets the time duration that X10DR "Live Mic" handset Rx audio is active when Advanced Emergency activated.

Default - 0

Emergency repeat cycles

Sets the number of "Live Mic", Tx and Rx cycles when Advanced Emergency is triggered.

Default - 1

Transmit audible emergency tone

Causes an audible emergency warble tone to be transmitted over the host mobile radio channel when emergency is activated.

Default - Off

The screenshot shows the 'X10DR Plus User Programmer, v3.04G, Transport = \\.\CSRO' window. The main title is 'X10DR® LIBERATE YOUR MOBILE RADIO'. On the right, the 'Plus Series' section has a 'Model' dropdown with 'Elite Plus' selected and 'Pro Plus' as an option. Below this are buttons for 'LOCK SETTINGS', 'LOAD FILE', 'SAVE FILE', 'DEFAULTS', and 'EXIT'. The main configuration area has tabs for 'Handset', 'Gateway', 'User Experience', 'Audio Levels', 'Emergency', and 'Hardware'. The 'Emergency' tab is active, showing 'Press and Hold Emergency Function' with an 'Audio Link Active Time (in second)' spinner set to 0. Below that is 'Short or Long Press Emergency Function' with 'Transmit Time (in second)' set to 0, 'Receive Time (in second)' set to 0, and 'Emergency Repeat Cycles' set to 1. There is also a checkbox for 'Transmit Audible Emergency Tone' which is unchecked. At the bottom are buttons for 'READ DEVICE', 'PROGRAM DEVICE', and 'RESTART DEVICE'.

Hirose Pin 2 function

Sets Hirose pin 2 to be either BAT+ (~3.3VDC) to power external accessories or bridged output speaker audio when pin 2 is set for speaker negative.

Default - Speaker -VE

Acc PTT

Sets whether Hirose PTT input generates Talkaround or Radio PTT.

Default - Radio PTT

PTT

Sets function of main large PTT button. Choose from drop down box.

Default - Radio PTT

Top 1

Sets function of top left button. Choose from drop down box.

Default - Emergency

Top 2

Sets function of top right button. Choose from drop down box.

Default - Talkaround PTT

Left 1

Sets function of top left button.

Default - short press Volume up / long press Relay mode OFF/ON (Elite Plus only)

Left 2

Sets function of bottom left button.

Default - short press: Volume down

Right 1

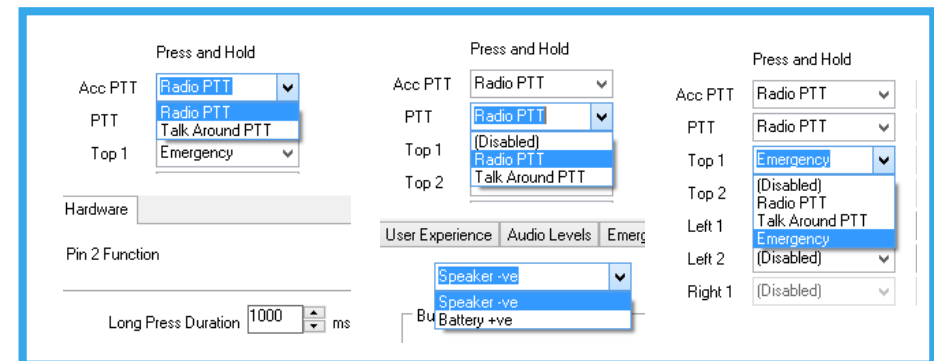
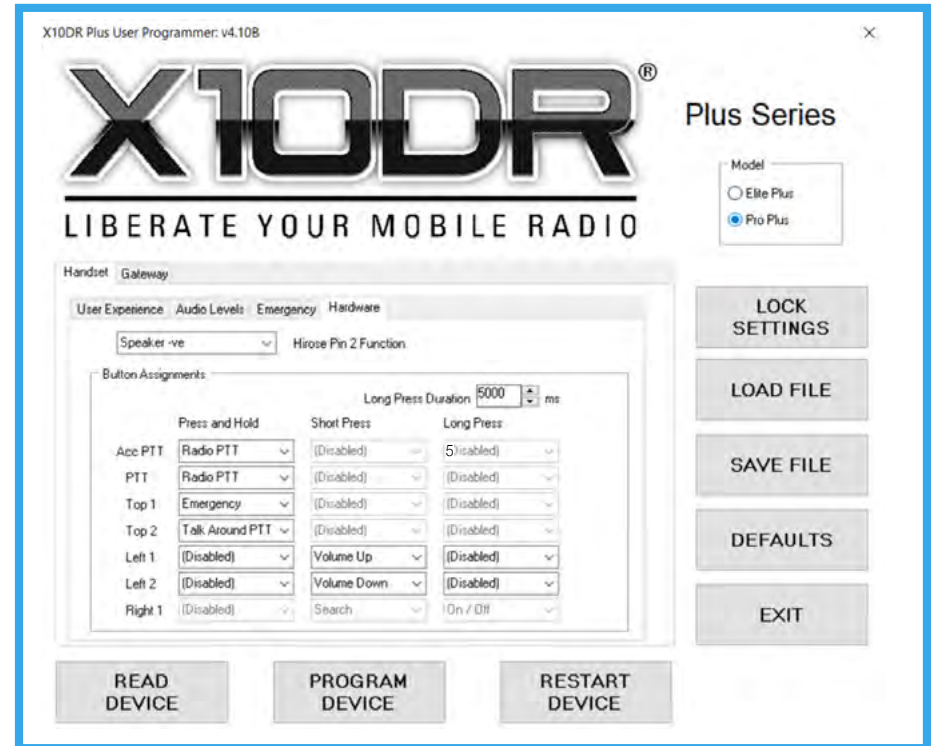
Sets the function of right side button. Re-assigning requires hardware modifications.

Default - short press: Search / long press: Power OFF/ON

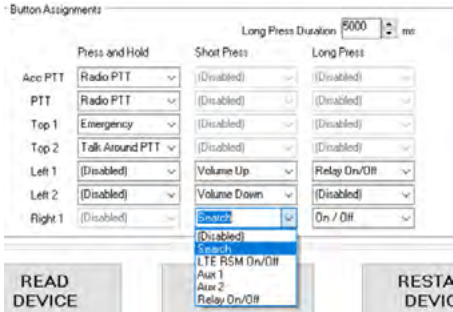
Long Press Duration

Sets time button must be pressed to action a Long Press.

Default - 5000mSec



Handset Programming: Dropdown box button assignment selection



Elite Plus Handset Right 1 Button - Short Press Assignments:

Search - Resets connection to its paired gateway, other paired gateways or Relay Mode paired handsets

LTE RSM On/Off - Toggles transmit function between configured X10DR functionality to a dedicated LTE (PoC) configured smartphone attached via curly cord - LED glows white when On. (For use with X10DR-EX2-LTE models only)

Aux 1 (or 2) - Can be used to trigger Emergency when used with XFSB/ XSJB(V2) Smart boxes in dual radio deployments.

Relay Mode On/Off - Toggles Relay Mode ON or OFF to allow handsets to talk directly or mesh back to vehicle when one handset is out of vehicle gateway range.

Default - Search (Pro Plus Models can only access Search function)

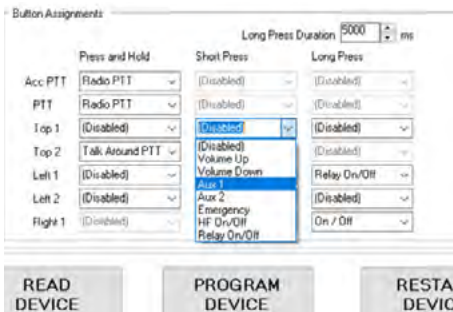


Elite Plus Handset Right 1 Button - Long Press Assignments:

On/Off - Manually powers Off and On the handset.

Power On - Manually powers ON a handset that is OFF. When so assigned we suggest that the blue Volume Down button (L2) be programmed for Long Press: Power OFF for intuitive operation (other buttons can be chosen if desired). This assignment is suggested when short press is assigned other than to its default setting.

Default - Off/ On



Elite Plus Handset Top 1/2, Left 1/2 Button - Short Press Assignments:

Disabled - Button has no function

Volume Up - Increases handset speaker audio volume in 7 steps.

Volume Down - Decreases handset speaker audio volume in 7 steps.

Aux 1 (or 2) - Can be used to trigger Emergency when used with XFSB/ XSJB(V2) Smart boxes in dual radio/ wireless device deployments.

Emergency - Triggers Emergency on host mobile/wireless network device where available.

HF On/Off - Toggles Handsfree local full duplex intercom operation ON / OFF.

Relay Mode On/Off - Toggles Relay Mode ON / OFF to allow handsets to talk directly or mesh back to vehicle when one handset is out of vehicle gateway range.



Elite Plus Handset Top 1/2, Left 1/2 Button - Long Press Assignments:

as per above short press selection but with following addition assignable function:

Power Off - Manually powers OFF a handset that is ON.

(Suggested button assignment : Volume down (L2) button)



Gateway Parameters

Pro Plus



Elite Plus



Elite Plus X10W

Special order only



XRTG Elite Plus



Status light

Function Button
- Manual Off/On
- Touchless Pairing
- Master Reset
- Find Me



XIVG Gateway

Elite Plus and Pro Plus models available



*We highly recommend use of the XGALA Gateway Audio Level Adjustment tool for setting audio levels. Download here:
<https://www.x10dr.com/wp-content/uploads/2020/11/XGALA-Gateway-Audio-Level-.zip>

Receiver Input Gain From Radio

Sets the receive input sensitivity. **Default - 0**

Transmit Output Gain To Radio

Sets the audio output level to radio when local/remote /handlebar PTT is pressed or when "Live Mic" is active. **Default - 0**

Talk Around Output Gain to other X10DRs

Sets the "intercom" microphone audio level. **Default - 0**

Find Me™ Function

Enables Find Me function in gateway. User double presses gateway **Function** button to trigger Find Me alert tones or triggers Remote FindMe.

Default - OFF

Radio Receive VOX/COR

Enables VOX derived COR.

Default - ON

VOX Trigger Level

Sets the gateway's audio detect sensitivity for VOX derived COR. **Default - 70**

Public Address Mode

Sets the gateway so only handset Talkaround audio is sent to the gateway 3.5mm jack. When unchecked both Radio PTT and Talkaround audio is available for in-car monitor use. **Default - OFF**

Monitor Emergency Input Alert Tone

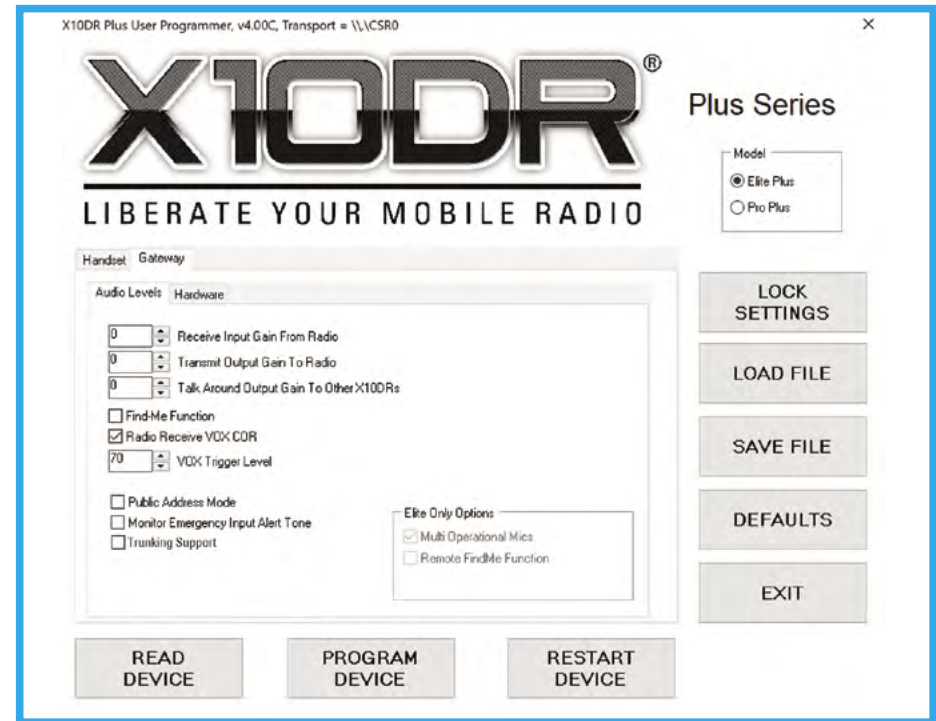
Causes Emergency warble alert tone to sound in all cross connected X10DR handsets whenever emergency input is triggered. (i.e. triggered from another gateway or externally supplied ground input).

Default - OFF

Trunking Support

Enables speaker audio upon PTT for 500mS, so host trunked mobile's Channel Grant/Talk Permit tones can be clearly distinguished by user. Handset Mic audio is also muted for 500mS to prevent those tones being rebroadcast over talkgroup. For optimum performance set VOX trigger level for **90-100** for fastest response.

Default - OFF



Elite Plus Series Only Options

Multi Operational Mics

Allows two or three Elite Series Mics to be simultaneously operational through the one Elite gateway unit.

Default - ON

Remote Find Me™

Enables Find Me function in gateway via grounding the white wire connected to pin 8 (Replaces Remote PTT function)

Default - OFF

I/O

Defines whether the specific gateway interface pin is assigned as an input or an output.

Active

Sets whether the interface pin needs to be held low or pulled up high to activate assigned functionality.

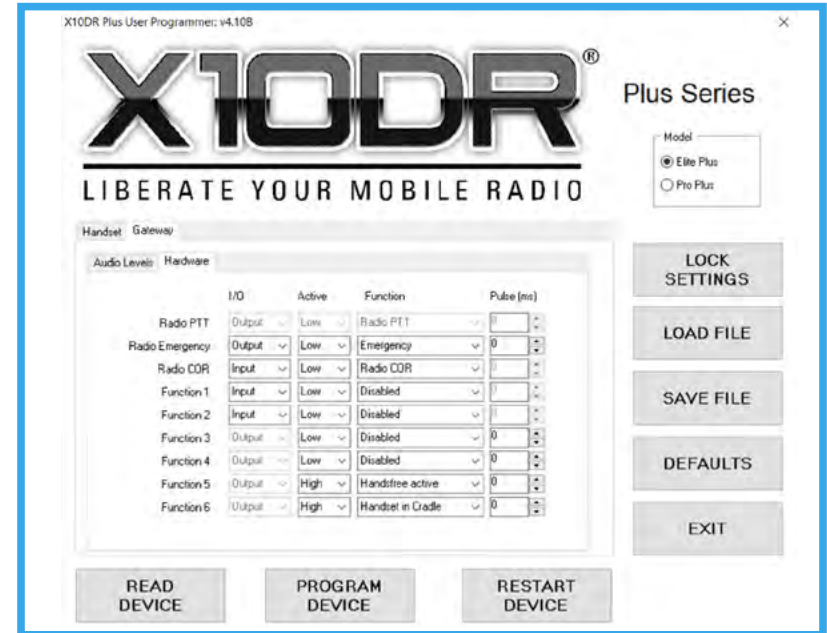
Function

Assigns desired functionality to Interface pin.

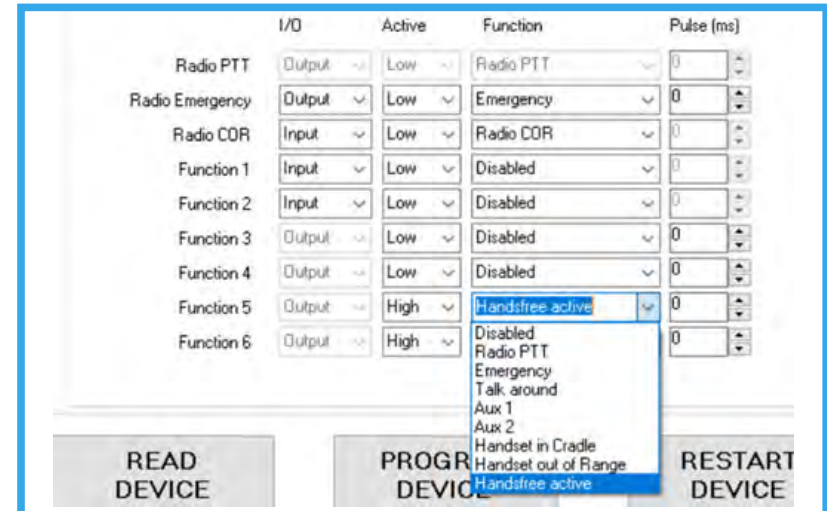
Choose the desired input or output from the dropdown boxes.

Pulse

Defines the length of time an input must be activated before the function is triggered or alternatively how long an output is activated when the assigned function has been triggered. A value of zero means an input triggers instantly.



	I/O	Active	Function	Pulse (ms)
Radio PTT	Output	Low	Radio PTT	0
Radio Emergency	Output	Low	Emergency	0
Radio COR	Input	Low	Radio COR	0
Function 1	Output	Low	Disabled	500
Function 2	Output	Low	Radio COR	500
Function 3	Output	Low	Remote PTT	0
Function 4	Output	Low	Find Me	0
Function 5	Output	Low	Handset in Cradle	0
Function 6	Output	Low	Handset out of Range	0
Function 5	Output	High	Disabled	100
Function 6	Output	High	Disabled	100



Pro Plus Default settings: Handset - Gateway

X10DR Plus User Programmer: v4.108

X10DR
LIBERATE YOUR MOBILE RADIO

Plus Series
Model
 Elite Plus
 Pro Plus

Handset - Gateway
User Experience Audio Levels Emergency Hardware

Speaker: ve Micro Pin 2 Function

Long Press Duration: 5000 ms

Button	Press and Hold	Short Press	Long Press
Any PTT	Radio PTT	Disabled	Disabled
PTT	Radio PTT	Disabled	Disabled
Top 1	Emergency	Disabled	Disabled
Top 2	Talk-Around PTT	Disabled	Disabled
Left 1	Disabled	Volume Up	Disabled
Left 2	Disabled	Volume Down	Disabled
Right 1	Disabled	Search	On/Off

LOCK SETTINGS
LOAD FILE
SAVE FILE
DEFAULTS
EXIT
READ DEVICE PROGRAM DEVICE RESTART DEVICE

X10DR Plus User Programmer: v3.04G, Transport = \\\CSRO

X10DR
LIBERATE YOUR MOBILE RADIO

Plus Series
Model
 Elite Plus
 Pro Plus

Handset - Gateway
User Experience Audio Levels Emergency Hardware

Internal Mic Gain: 0
Internal Mic High Gain Boost: 0
External Mic Gain: 0
External Mic High Gain Boost: 0
Remote PTT Gain Boost: 0

LOCK SETTINGS
LOAD FILE
SAVE FILE
DEFAULTS
EXIT
READ DEVICE PROGRAM DEVICE RESTART DEVICE

X10DR Plus User Programmer: v4.108

X10DR
LIBERATE YOUR MOBILE RADIO

Plus Series
Model
 Elite Plus
 Pro Plus

Handset - Gateway
User Experience Audio Levels Emergency Hardware

Receive Input Gain From Radio: 0
Transmit Output Gain To Radio: 0
Talk-Around Output Gain To Other X10DRs: 0

LOCK SETTINGS
LOAD FILE
SAVE FILE
DEFAULTS
EXIT
READ DEVICE PROGRAM DEVICE RESTART DEVICE

X10DR Plus User Programmer: v3.04G, Transport = \\\CSRO

X10DR
LIBERATE YOUR MOBILE RADIO

Plus Series
Model
 Elite Plus
 Pro Plus

Handset - Gateway
User Experience Audio Levels Emergency Hardware

Press and Hold Emergency Function
Audio Link Active Time (in seconds): 0

Short or Long Press Emergency Function
Transmit Time (in seconds): 0
Receive Time (in seconds): 0
Emergency Repeat Cycles: 1

LOCK SETTINGS
LOAD FILE
SAVE FILE
DEFAULTS
EXIT
READ DEVICE PROGRAM DEVICE RESTART DEVICE

X10DR Plus User Programmer: v4.108

X10DR
LIBERATE YOUR MOBILE RADIO

Plus Series
Model
 Elite Plus
 Pro Plus

Handset - Gateway
User Experience Audio Levels Emergency Hardware

Radio PTT Key Beep:
Emergency Key Beep:
Talk-Around PTT Key Beep:
Search Mode Always Active:
Mute Speaker On PTT:
Mute Speaker On Charge:
LED Charge Indicator:
Auto Turn On When Charging:
Minimum Volume In Use:
Mandown Monitor (when fitted):
Internal Mic Only Operation:

LOCK SETTINGS
LOAD FILE
SAVE FILE
DEFAULTS
EXIT
READ DEVICE PROGRAM DEVICE RESTART DEVICE

X10DR Plus User Programmer: v4.108

X10DR
LIBERATE YOUR MOBILE RADIO

Plus Series
Model
 Elite Plus
 Pro Plus

Handset - Gateway
User Experience Audio Levels Emergency Hardware

I/O	Active	Function	Pulse (ms)
Radio PTT	Output	Low	Radio PTT
Radio Emergency	Output	Low	Emergency
Radio CGR	Input	Low	Radio CGR
Function 1	Input	Low	Disabled
Function 2	Input	Low	Disabled
Function 3	Output	Low	Disabled
Function 4	Output	Low	Disabled
Function 5	Output	High	Disabled
Function 6	Output	High	Handset in Cradle

LOCK SETTINGS
LOAD FILE
SAVE FILE
DEFAULTS
EXIT
READ DEVICE PROGRAM DEVICE RESTART DEVICE