

# **Weems & Plath®**

*INNOVATION ROOTED IN TRADITION*

## **BAROMETER**

*Lifetime Warranty*

214 EASTERN AVE. • ANNAPOLIS, MD 21403 • USA  
410-263-6700 • fax 410-268-8713  
E-mail: [support@weems-plath.com](mailto:support@weems-plath.com)  
[www.Weems-Plath.com](http://www.Weems-Plath.com)

# OPERATING INSTRUCTIONS

A barometer is an instrument used to predict a change in weather by measuring variations in atmospheric pressure or the weight of the air around us. The barometer will normally indicate changes in weather 12 to 24 hours in advance; it is not an indicator of present weather conditions. Barometric pressure is the same indoors as outdoors.

Your barometer is an aneroid type which measures atmospheric pressure mechanically without use of liquids. An evacuated hollow metallic diaphragm is employed to actuate a pointer indicating atmospheric pressure.

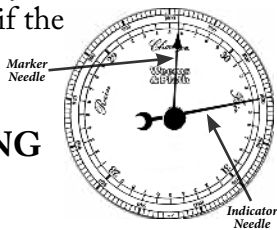
Do not take any notice of the words Rain, Change, Fair. They are a traditional graphic decoration found on all barometers. At sea level, the normal atmospheric pressure is about 30 inches. Very rarely will the needle ever exceed 30.5 or drop below 29.5. Sometimes it is possible for the pressure to change only one or two tenths of one inch over a week, even a storm may cause only a half inch of change.

When your barometer left the factory, it was set at standard sea level which is the standard setting for weather observation. The movements used in Weems & Plath® barometers are adjustable up to an altitude of 3,500 feet. The pressure will decrease as your altitude increases. It is necessary for you to set your barometer to the atmospheric pressure in your geographic area by means of the

small screw found on the back of the movement. To access this screw, expose the back of movement by unscrewing the bezel and lifting out the movement, or if the hinged type, swinging the bezel open. Gently turn the adjustment screw to the correct local pressure. *\*NOTE: When turning the indicator needle from either direction, do not go beyond the “6 o'clock” position.*

Consult a local weather source for present atmospheric pressure and adjust your barometer accordingly.

Turn the exterior knob to move the marker needle to the present atmospheric pressure. This will allow you to return to the barometer after time has passed to determine if the atmospheric pressure is rising or falling.



## BAROMETER TROUBLESHOOTING

### Indicator Needle Does Not Move:

1. Place the marker needle over the indicator needle (usually black) and wait a few days to see if indicator needle moves. When atmospheric pressure is steady the needle will not move. Waiting for weather change over a period of days will determine if the needle is moving properly.
2. Place the barometer in a clear, plastic bag trapping air inside with the barometer. Hold the bag opening closed and push on the bag to increase air pressure, which will cause the indicator needle to move.

3. If the needle does not move after trying #1 and 2, return for service.\*\*

*\*\*When returning for service, package carefully as Weems & Plath® cannot be responsible for damage in transit. Create an account on the Weems & Plath website to complete the Repair Request Form, then print the confirmation email and include it with your instrument when shipping it to:*

**Send To:**

**WEEMS & PLATH**

**214 EASTERN AVE. • ANNAPOLIS, MD 21403 • USA**

**Product Registration:**

In order to provide the best service possible, please register your product online at [www.Weems-Plath.com](http://www.Weems-Plath.com). Your registration serves as proof of purchase and activates your warranty.