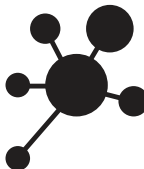




Old or new... Kowa System S supports you.

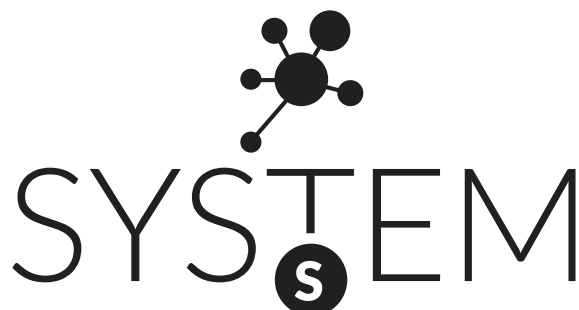
Kowa


SYSTEM
S

Kowa System S creates new opportunities and breathes life into your Kowa spotting scope.



Digiscoping with the latest digital camera models and Kowa TSN-1



Whether you have the latest model, or still own your trusty Kowa spotting scope from many years ago, Kowa System S offers a range of accessories and adapters to expand the functionality of your optic.

We know for some of you, your Kowa optic has been by your side for many years, you trust it and you still enjoy the excellent image quality and durability it delivers - **but why shouldn't you experience the latest digiscoping techniques or optical advances on offer?** That's the Kowa philosophy behind Kowa System S, an optic that remains future proof and versatile, providing a lifetime of outstanding optical performance.

As a leading spotting scope manufacturer, Kowa has created many iconic models over the last 6 decades. If you are unsure as to what model you own, please refer to the chart opposite to assist in identifying your spotting scope. Remember, design changes can be subtle including the addition of a red ring or PROMINAR logo. Please consult the chart on the back page of this brochure to check compatibility of your spotting scope and Kowa System adapters.



Enjoy stunning views with the latest Kowa System S eyepieces on spotting scope bodies old and new.



Need that extra reach? Kowa System S adapters include a 1.6x extender to bring your subject even closer with minimal loss of light.



Digiscoping does not need to be complicated - our universal DSLR and system camera adapter offers a simple and effective solution for full frame, MFT and compact system cameras.



Own a state-of-the-art MFT or compact system camera? Now you can digiscope with ease and combine the latest camera technology with your Kowa scope - old or new.



Not just for current models - by combining Kowa System S accessories - you could enjoy smartphone digiscoping on your historical Kowa spotting scope.

Current Kowa models making use of these accessories

TSN-601



TSN-602



TSN-663M



TSN-664M



TSN-82SV



Extract of historical Kowa models (1984- 2012)



TSN-603



TSN-604



TSN-661



TSN-662



TSN-663



TSN-664



TSN-1



TSN-2



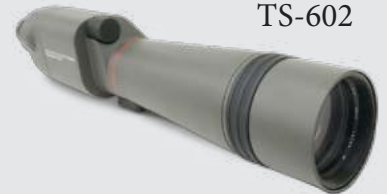
TSN-3



TSN-4



TS-601



TS-602



TS-611



TS-612



TS-613



TS-614



TSN-821



TSN-822



TSN-823



TSN-824



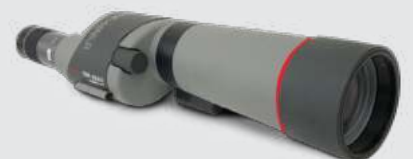
TSN-821M



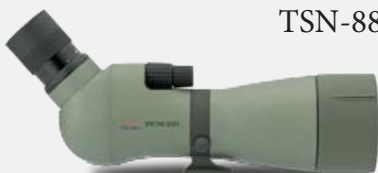
TSN-822M



TSN-823M



TSN-824M




TSN-881



TSN-882

If you need help identifying the correct components for your scope system, contact askSystemS@kowaoptimed.com



SYSTEM S

Kowa System S components are designed to integrate together.

Use the compatibility information below to see if your historical Kowa model can benefit from a Kowa System S accessory.

For example - you may need to upgrade your current eyepiece to the TSE-Z9B in order to digiscope using the TSN-PA8 digiscoping adapter.

Kowa System S is versatile and flexible offering enhanced viewing solutions for many discontinued Kowa spotting scopes.



KOWA SYSTEM S PRODUCT COMPATIBILITY

<p>KOWA EYEPIECE TSE-Z9B (20-60x)</p>  <p>Compatible spotting scopes TSN-601/602/603/604 TSN-661/662/663/664/663M/664M TSN-825V TSN-1/2/3/4 TS-601/602 TS-611/612/613/614 TSN-820/820M (requires TSN-EC1A adapter ring)</p>	<p>KOWA TSN-EX16S (1.6x) Extender</p>  <p>Compatible Spotting scopes TSN-601,602,603,604 TSN-661 TSN-662 TSN-663 TSN-664 TSN-663M TSN-664M TSN-825V TS-601 TS-602 TS-611 TS-612 TS-613 TS-614</p> <p>TSN-1 TSN-2 TSN-3 TSN-4</p> <p>Please note: Some TSN-1/2/3/4 models have protection glass inside the body. These models are not compatible with the TSN-EX16S.</p>	<p>KOWA TSN-PA8 Digiscoping adapter</p>  <p>Compatible spotting scopes TSN-661/662/663/664/663M/664M TSN-601/602/603/604 TSN-825V TSN-820/820M Series TS-601 / 602 TS-611/612/613/614 TSN-1/2/3/4</p> <p>Compatible Eyepieces TSE-Z9B 20-60x TSE-Z4 (20-60x) (discontinued) TSE-Z7 (20-60x) (discontinued)</p>
<p>KOWA EYEPIECE TSE-14WD (30x wide)</p>  <p>Compatible spotting scopes TSN-601/602/603/604 TSN-661/662/663/664/663M/664M TSN-825V TSN-1/2/3/4 TS-601/602 TS-611/612/613/614 TSN-820/820M (requires TSN-EC1A adapter ring)</p>	<p>The following models require TSE-Z9B or TE-14WD eyepiece in combination with TSN-EC1A Adapter ring</p> <p>TSN-821 TSN-822 TSN-823 TSN-824 TSN-821M TSN-822M TSN-823M TSN-824M</p>	<p>KOWA TSN-DA20 Digiscoping adapter</p>  <p>Compatible eyepieces TSE-Z9B (20-60x zoom) TSE-14WD (30x wide zoom)</p> <p>TSE-Z7C (20-60x for TSN-820M series, no longer available) TSE-21W (21x Wide for TSN-820M series, no longer available) TSE-14WE (32x Wide for TSN-820M series, no longer available) TSE-9W (50x Wide for TSN-820M series, no longer available) TSE-17HE (27x LER for TSN-820M series, no longer available) TSE-21WH (21x Wide for Kowa Highlander) TSE-14WH (32x Wide for Kowa Highlander) TSE-9WH (50x Wide for Kowa Highlander)</p>
<p>KOWA SMARTPHONE ADAPTERS Visit website to check latest compatible smartphone models.</p>		
<p>Compatible Eyepieces</p> <p>TSE-Z9B (20-60x zoom) TSE-9WD (45x wide) TSE-14WD (30x wide) TSE-21WD (20x wide) TSE-7Z (20-60x zoom) TSE-21WE (21x wide) TSE-14WE (30x wide)</p>	<p>Adapter ring (sold separately)</p> <p>TSN-AR 66Z TSN-AR 66Z TSN-AR 66HL TSN-AR 66HL TSN-AR 66Z TSN-AR 66HL TSN-AR 66HL</p> 	 <p>#KowaSystem</p>

Learn more about Kowa System S at www.kowaoptic.com

If you need help identifying the correct components for your scope system, contact askSystemS@kowaoptimed.com

Kowa Optimed Deutschland GmbH | Fichtenstrasse 123 | D-40233 | Düsseldorf | Germany | T: +49 (0) 211-542184-00 | E-mail: scope@kowaoptimed.com

All equipment and specifications listed are subject to change without prior notice. Before using these products, be certain to carefully read the instruction manual. Do not under any circumstances use these products to look at the sun, this may result in loss of eyesight. Names of companies and products described in this pamphlet are the trademarks or registered trademarks of each company.