

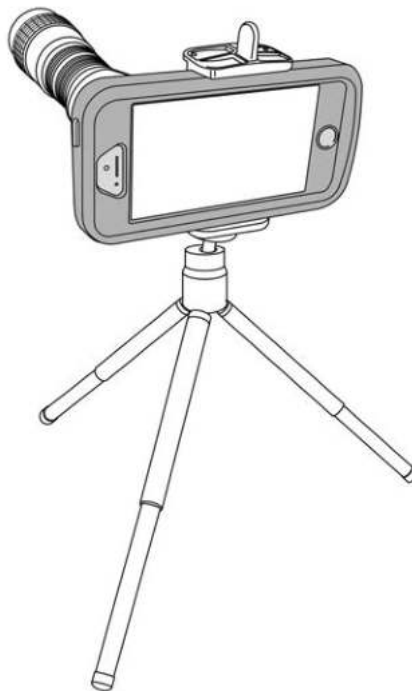
CARSON®

TELEPHOTO LENS

SMARTPHONE OPTICS ADAPTER

Instructions for use

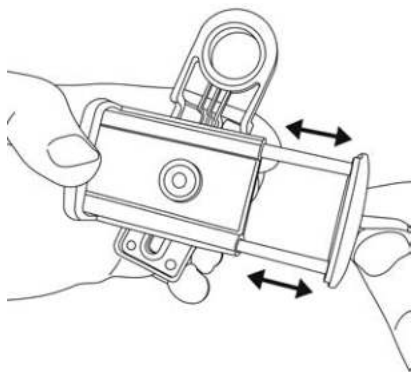
**HOLDS PHONES/CASES
UP TO 3 1/2" WIDE**



IC-918

HookUpz™

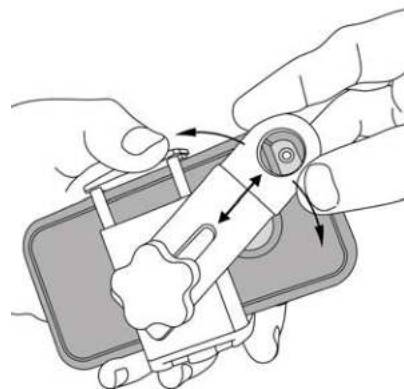
Inserting Phone and Aligning Lens Bracket



Pull open adapter and place phone into it with rotating bracket on the back side of the phone. *Note: You do not need to remove your protective case to use this adapter.*

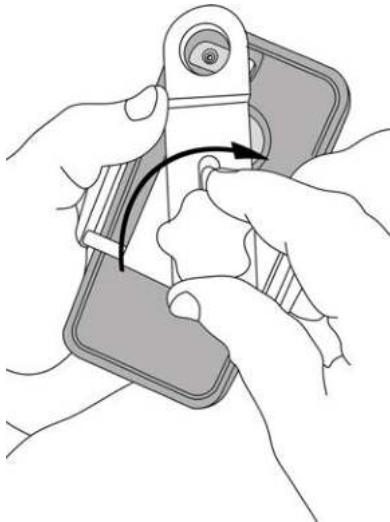


Phone must be placed flush to adapter. Make sure adapter does not interfere with any buttons on the side of phone.

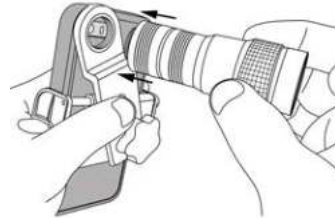


Loosen locking knob and adjust the telephoto lens bracket so that the camera lens is centered inside the threaded hole.

Aligning Lens Bracket (cont.) and Attaching Telephoto Lens

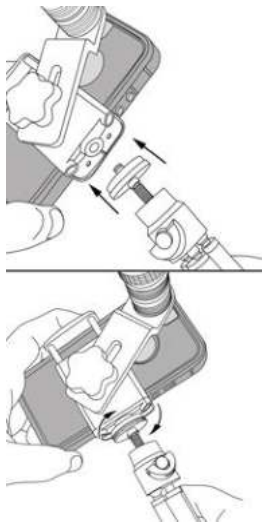


Once camera lens is perfectly centered, tighten knob to lock into place.

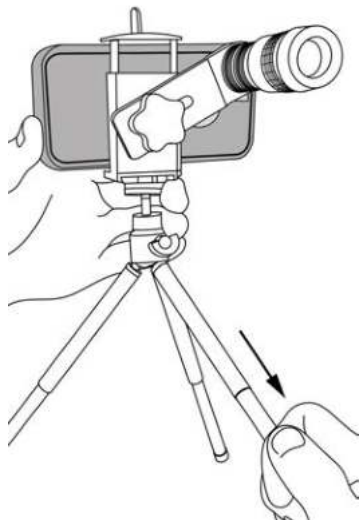


Screw telephoto lens into threaded hole and **tighten securely.**

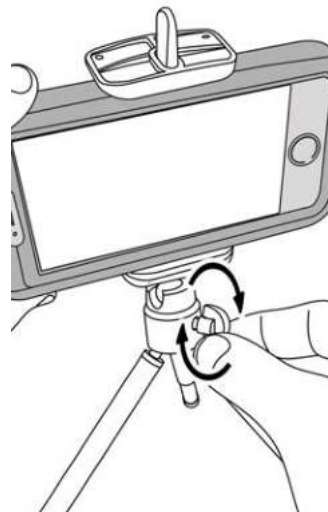
Using Included Mini-Tripod



To use the included mini-tripod, screw the tripod head into the tripod thread on the bottom of the adapter.



Extend each tripod leg out fully to increase stability.



Turn locking screw to loosen ball joint. Position camera as desired and then re-tighten securely.

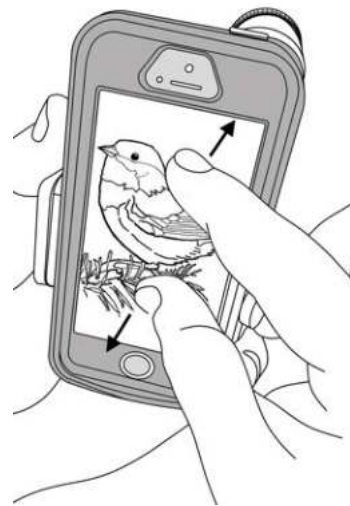
Focusing and Enlarging Image Digitally



Turn on your smart phone camera and point telephoto lens at viewing subject. Focus by turning the focus wheel until image on screen is sharp. *Note: you may need to adjust adapter position slightly to perfectly center telephoto lens.*



You may notice that the image does not take up the entire screen. This is normal and can be corrected by enlarging the image on the screen digitally.



To enlarge your image digitally, pinch and enlarge the phone screen until the image fills up your entire screen.

Helpful Usage Tips

Phone Tips:

- For best image switch your smartphone to video mode.
- Long viewing sessions may drain your phone battery. Try a charging case to extend your battery life.

Photography Tips:

- Tap your phone screen on your object of interest to manually force the auto-focus function.
- For videos, you may want to set and lock your focus on your viewing object. For iPhone users, tap and hold the screen where you want to focus and “AE/AF lock” will be shown on the top of your screen.
- External vibrations might cause your screen image to shake. For best results mount your adapter to a tripod or place on a stable surface.
- Many phones have image stabilization features. Check your phone and turn on this feature if available. If not, there are camera Apps with stabilization features.
- If tapping your screen is causing vibration, you can use a remote shutter to take the photo. For Apple phones, if you attach headphones with a volume control, you can use the volume buttons on the headphones to operate the camera shutter.

Storage/Cleaning Information:

- To avoid damage, always store components in protective case when not in use.
- Store in dry area at room temperature.
- Do not leave adapter permanently attached to smart phone as this may weaken the springs over time.
- Adapter and telephoto lens should be cleaned with soft, damp cloth only. Do not use any chemicals or abrasives.

Other Uses:

For remote sharing of your video via FaceTime or an equivalent program.

Specifications

Phones:

- Designed to work with most phone cases. You do not need to remove your phone from its case.
- Holds phones/cases up to 3.5" wide.
- Fits on other similarly sized devices with cameras such as iPods.

Telephoto Lens:

- Magnification: 6x
- Objective Lens Diameter: 18mm
- Prism Type: BK7
- Lens Coating: Coated
- Field of View: 630 feet at 1000 yards
- Eye Relief: 9.8mm
- Close Focus: 6.5 feet

Customer Service:

We will be happy to help you with any problems you may experience with your Telephoto Lens Smartphone Adapter.
Email us at info@carson.com or call toll-free at 1-800-967-8427.

Carson Optical • 2070 5th Avenue • Ronkonkoma, NY 11779

www.carson.com

info@carson.com

Tel: 631-963-5000

Fax: 631-427-6749